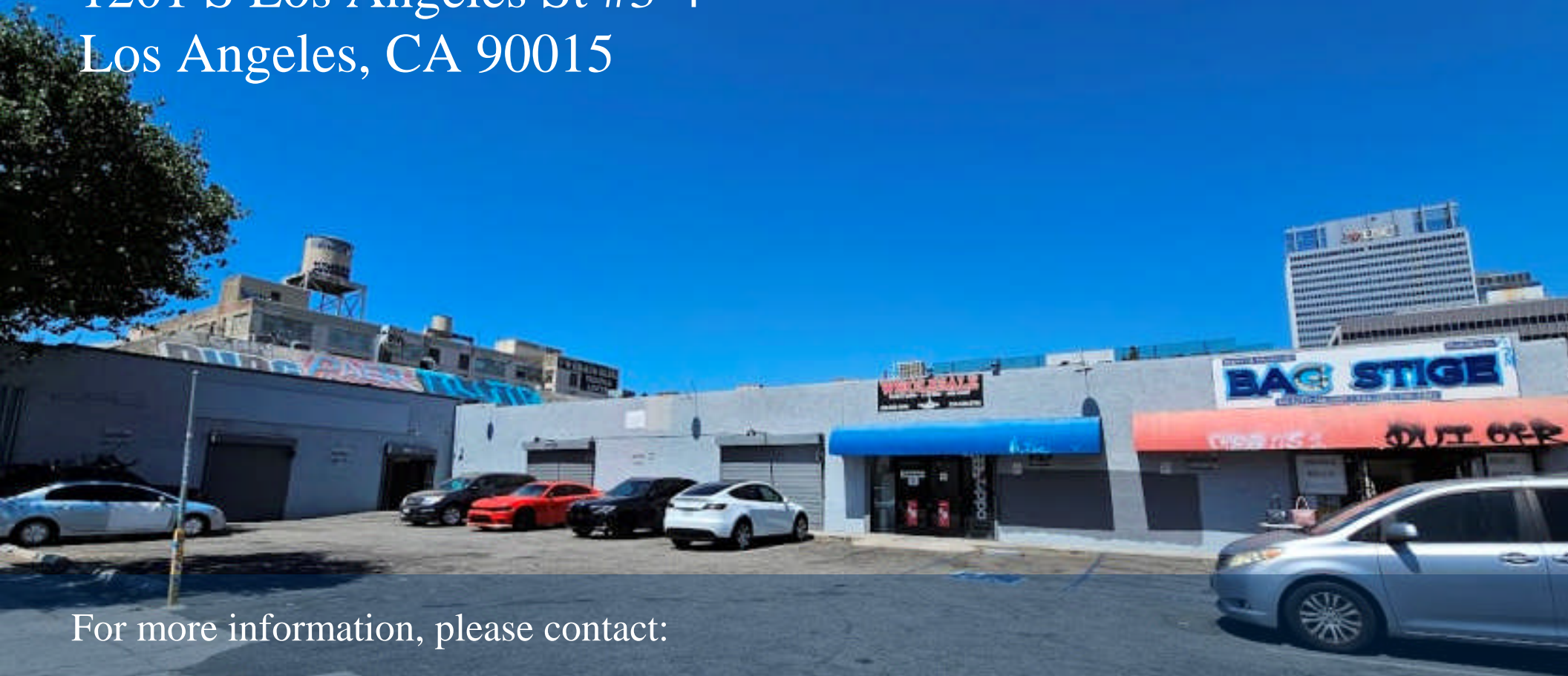


For Lease

±6,000 SF

1201 S Los Angeles St #3-4
Los Angeles, CA 90015



For more information, please contact:

Daniel Park

(213) 446-0396

Danielpark777@hotmail.com

DRE# 01227056

PARK INDUSTRIAL
SPECIALIZING IN INDUSTRIAL REAL ESTATE SERVICES

Park Industrial Realty
800 McGarry St, 5th Floor
Los Angeles, CA 90021
Corporation DRE# 01983713

Property Information

Address: 1201 S Los Angeles St #3-4
Los Angeles, CA 90015

Available SF: 6,000 SF

Year Built: 1947

Clear Height: 12 - 16 feet

Parking: 3

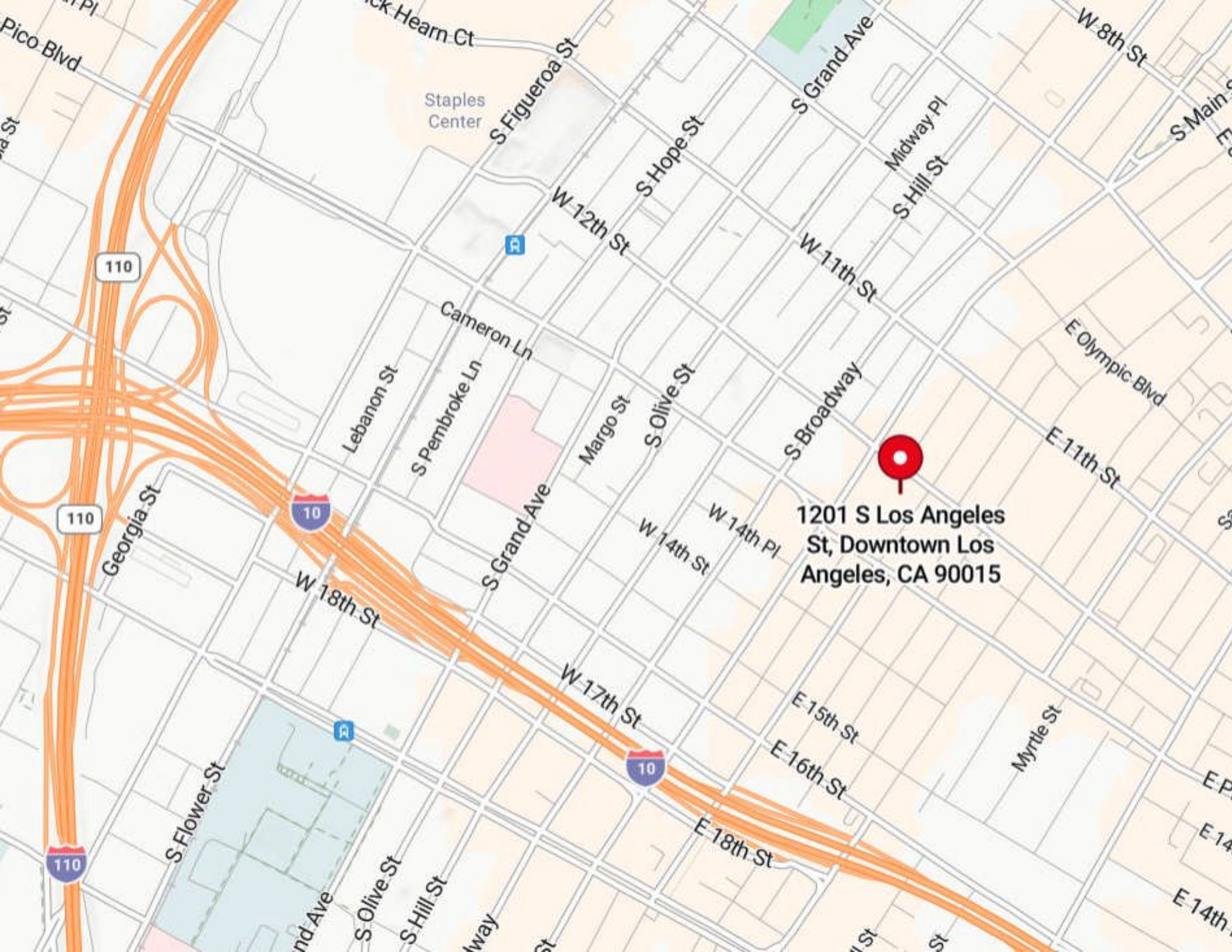
Loading: 1 GL

Zoning: M2

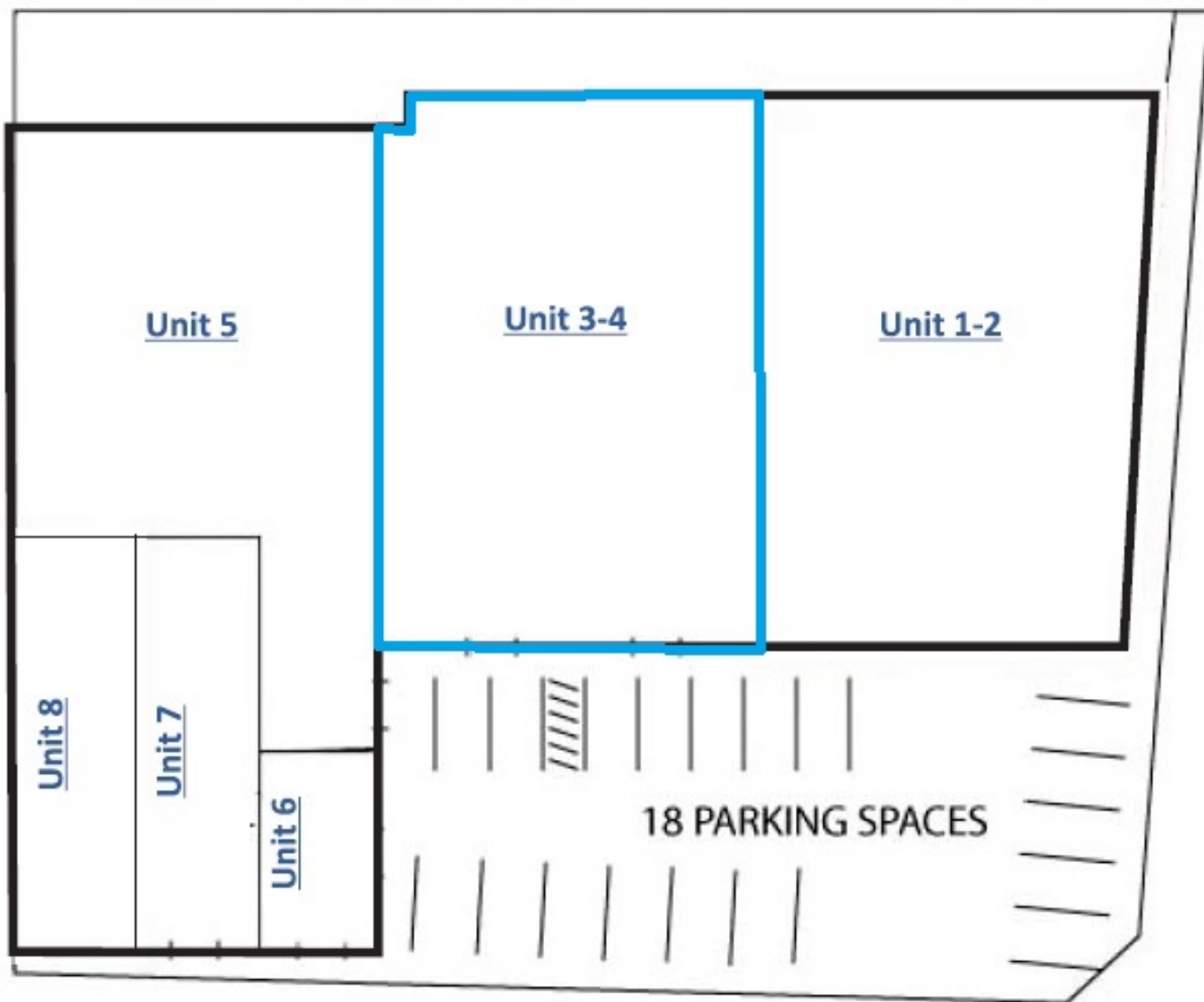
Lease Rate: \$5,000 (\$0.83/SF) gross

- Located in Downtown LA South Park
- Signalized corner location
- Great for retail/wholesale with storage
- Convenient front parking
- 2 restrooms
- Close to freeways

All information has been furnished from sources which we deem reliable, but for which we assume no liability. All measurements are approximate. Broker/Owner do not warrant its accuracy. Buyer/Lessee must verify all information.



1201 S Los Angeles
St, Downtown Los
Angeles, CA 90015



Unit 5

Unit 3-4

Unit 1-2

Unit 8

Unit 7

Unit 6

18 PARKING SPACES

E 12th St

S Los Angeles St



