

# FOR SALE

951 Sonoma Park Dr,  
Norman, OK 73071



**Johnson**  
Commercial Group

JohnsonCommercialGroup.com



## Offering Summary

**Sale Price: \$425,000**

**Lot Size: 1.25 Acres**

**Price Per SF: \$7.80**

**Zoning: C-1**

**Traffic Count: 25,013**

**Tax ID: R0044526**

**Chris Johnson**  
chris@jcgok.com  
405.435.3572

## Property Overview

**For Sale – 1.25± Acres | 951 Sonoma Park Dr, Norman, OK**

This 1.25-acre vacant commercial lot is located in East Norman and zoned C-1, offering an excellent opportunity for retail, office, or service-based development. Positioned just off East Robinson Street with easy access to Main Street, the site provides strong visibility and convenient ingress and egress. The property is situated near Walmart and a variety of established retail shops, benefiting from steady traffic and a proven commercial trade area. With its desirable location and flexible zoning, this site is well suited for a wide range of commercial uses.



**BRICK & BEAM**  
REALTY



# FOR SALE

951 Sonoma Park Dr,  
Norman, OK 73071



**Johnson**  
Commercial Group

JohnsonCommercialGroup.com



**Chris Johnson**  
chris@jcgok.com  
405.435.3572



**BRICK & BEAM**  
REALTY



# FOR SALE

951 Sonoma Park Dr,  
Norman, OK 73071



**Johnson**  
Commercial Group

[JohnsonCommercialGroup.com](http://JohnsonCommercialGroup.com)



**Chris Johnson**  
[chris@jcgok.com](mailto:chris@jcgok.com)  
405.435.3572



**BRICK & BEAM**  
REALTY



# FOR SALE

951 Sonoma Park Dr,  
Norman, OK 73071



**Johnson**  
Commercial Group

[JohnsonCommercialGroup.com](http://JohnsonCommercialGroup.com)



**Chris Johnson**  
[chris@jcgok.com](mailto:chris@jcgok.com)  
405.435.3572



**BRICK & BEAM**  
REALTY



# FOR SALE

951 Sonoma Park Dr,  
Norman, OK 73071



**Johnson**  
Commercial Group

[JohnsonCommercialGroup.com](http://JohnsonCommercialGroup.com)



**Chris Johnson**  
[chris@jcgok.com](mailto:chris@jcgok.com)  
405.435.3572



**BRICK & BEAM**  
REALTY



# FOR SALE

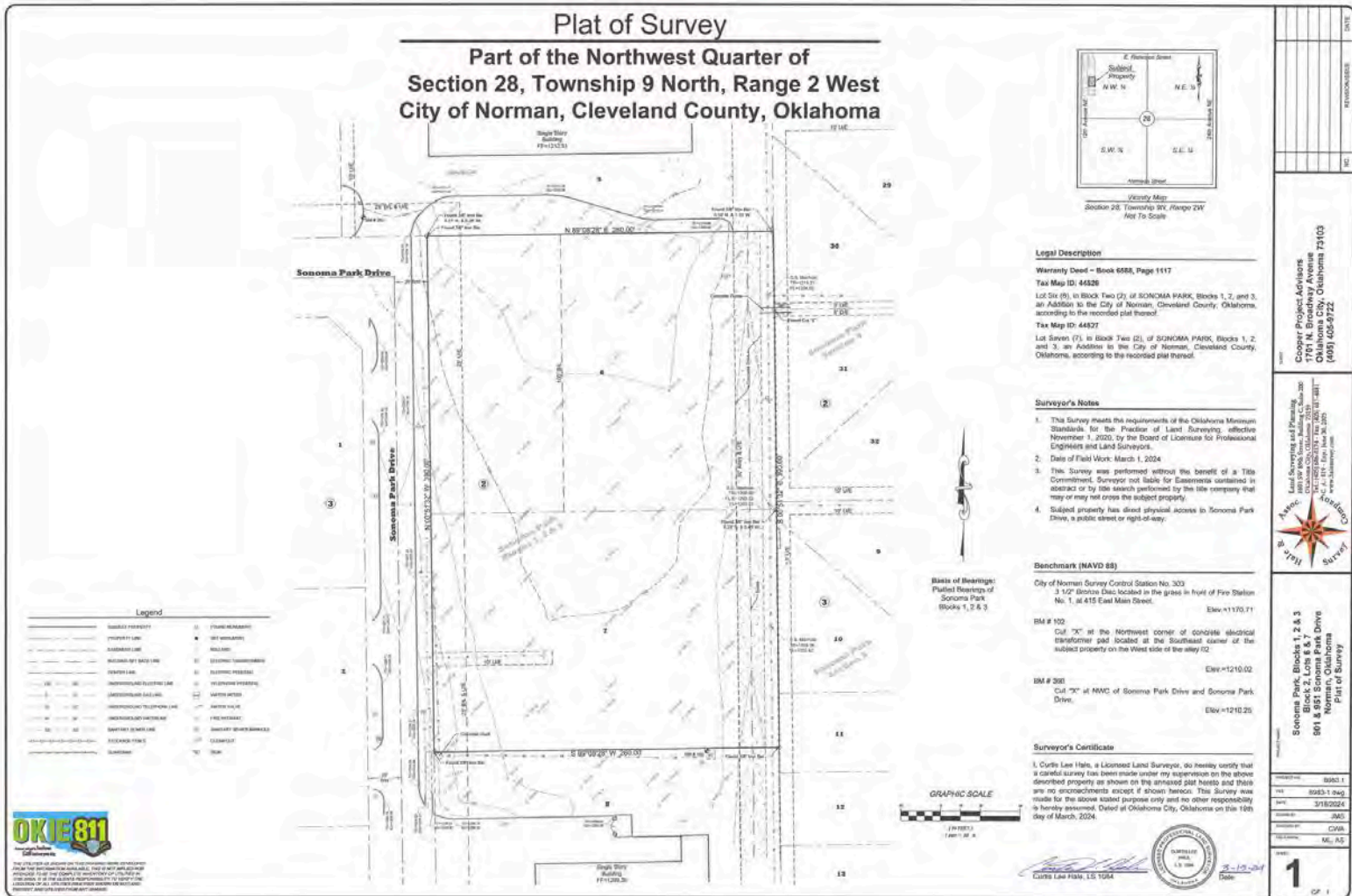
951 Sonoma Park Dr,  
Norman, OK 73071



# Johnson

Commercial Group

JohnsonCommercialGroup.com



Chris Johnson  
chris@jcgok.com  
405.435.3572



BRICK & BEAM  
REALTY



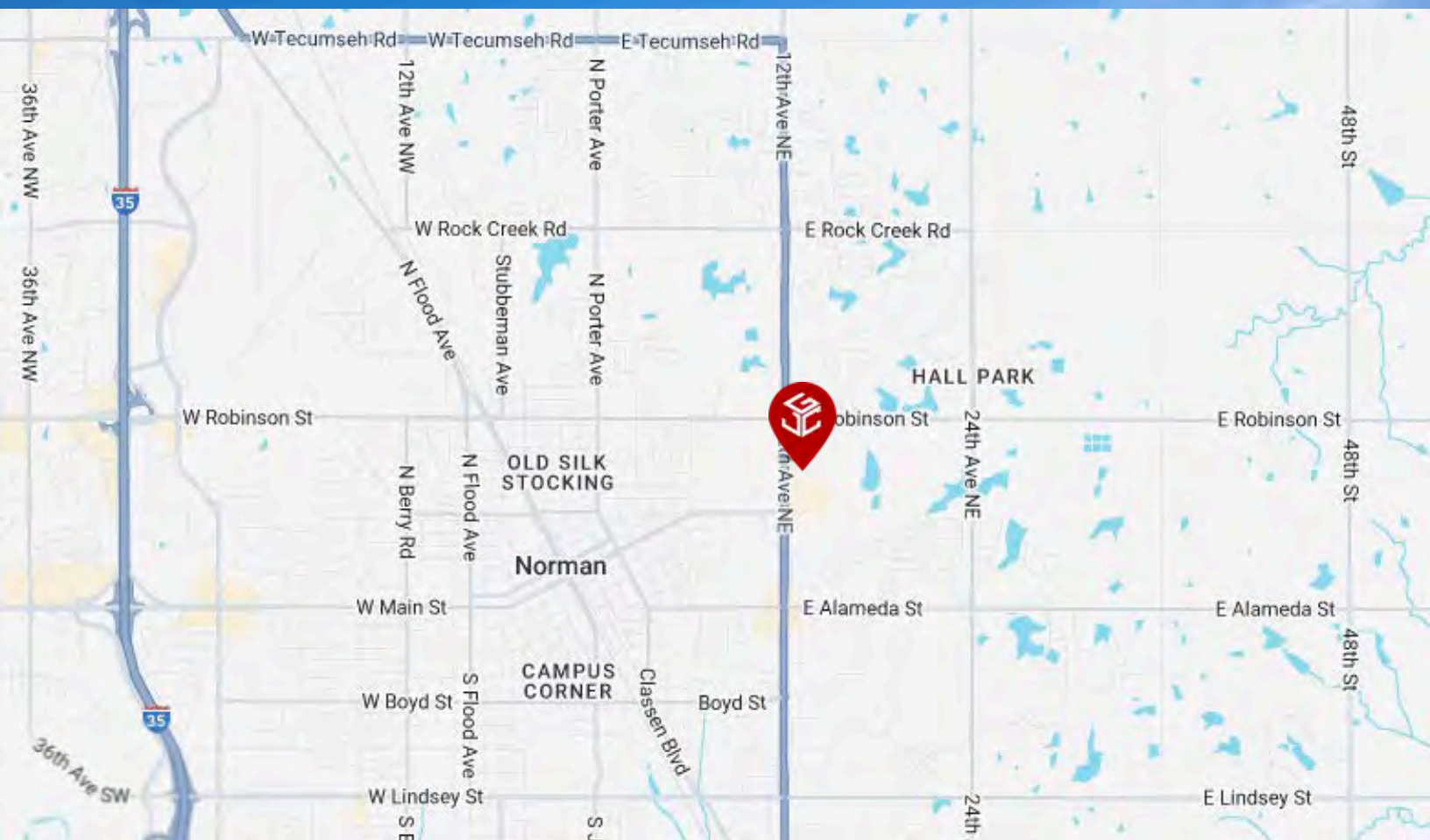
# FOR SALE

951 Sonoma Park Dr,  
Norman, OK 73071



**Johnson**  
Commercial Group

JohnsonCommercialGroup.com



**Chris Johnson**  
chris@jcgok.com  
405.435.3572



**BRICK & BEAM**  
REALTY

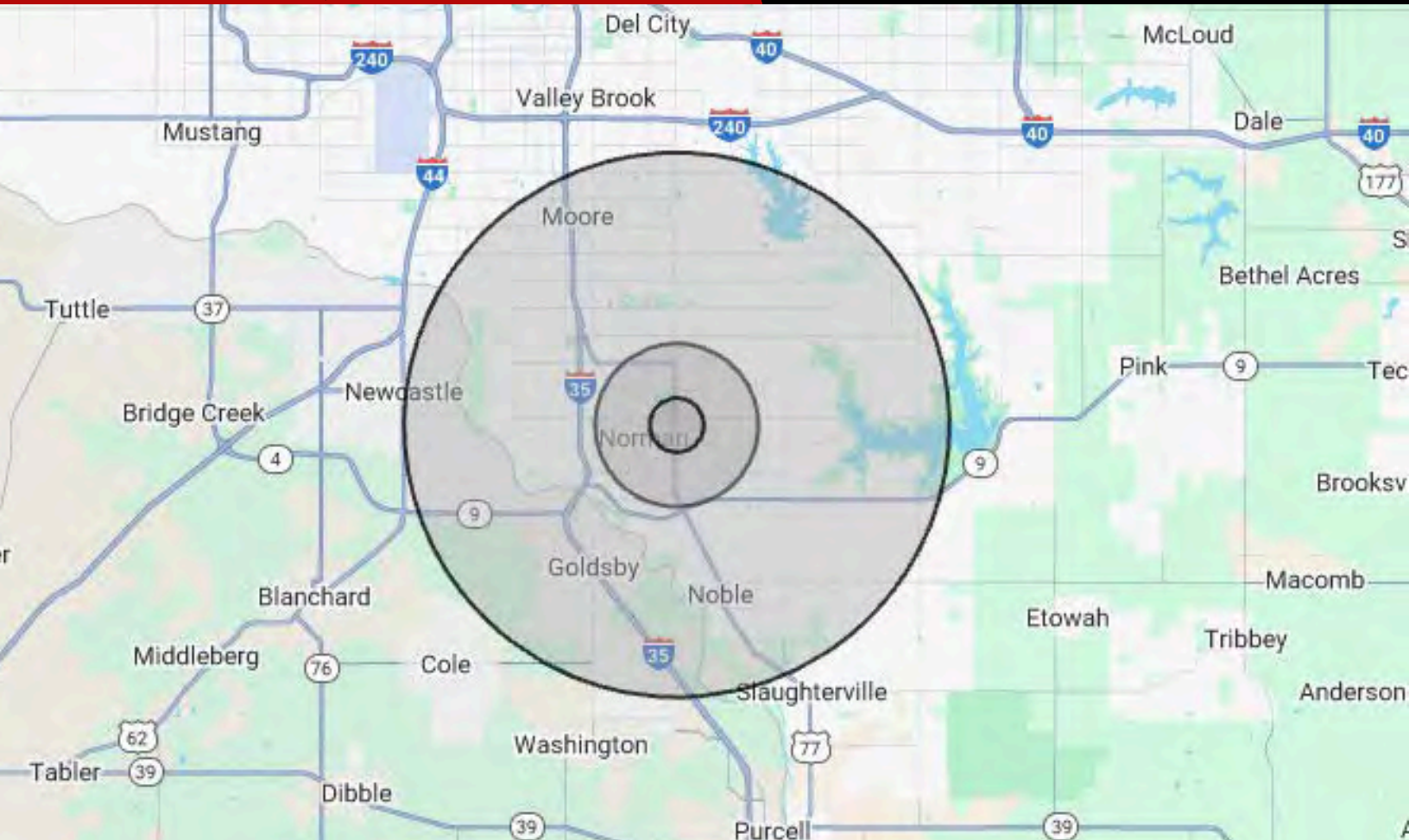
# FOR SALE

951 Sonoma Park Dr,  
Norman, OK 73071



**Johnson**  
Commercial Group

JohnsonCommercialGroup.com



## Demographics

### 1 MILE

### 3 MILE

### 10 MILE

Population	8,758	74,565	230,677
Average Age	37	30	35
Employment	14,199	48,298	101,512
Households	3,535	28,385	89,213
Ave. Household Income	\$67,326	\$69,933	\$83,774
Median Home Value	\$151,012	\$181,457	\$195,224

## Traffic Count

## Average Daily Volume

**25,013 Vehicles**

Information Provide By CoStar

**Chris Johnson**  
chris@jcgok.com  
405.435.3572



**BRICK & BEAM**  
REALTY



# FOR SALE

951 Sonoma Park Dr,  
Norman, OK 73071



**Johnson**  
Commercial Group

JohnsonCommercialGroup.com



## Disclaimer

A real estate broker is not authorized to give legal or tax advice. No representation is made by Johnson Commercial Group, its agents or employees, as to the legal effect or tax consequences of the information contained herein or any transaction relating thereto. Although all information furnished regarding property sales or financing options are from sources deemed to be reliable, such information has not been verified and no express representation is made on, or is in any way implied as to the accuracy thereof and is subject to errors, omissions, change of price, or other conditions prior to sale or withdrawal without notice.

**Chris Johnson**  
chris@jcgok.com  
405.435.3572



**BRICK & BEAM**  
REALTY