



Jones Lang LaSalle
Brokerage, Inc.

LEASING
NOW

**UNION
PARK II**
7050 & 7070





BUILDING HIGHLIGHTS



Building Signage and Excellent Visibility



Move-in Ready Suite Available



Structured Parking with EV Charging Stations



Highly Walkable with Access to Fort Union Shops + Restaurants



Class A Finishes



Stunning Mountain Views



High-Speed Fiber Optic Network and Internet Connectivity



Fitness Center



Space for your ideas to grow.

Available Space
4,710 SF

Lease Rate
\$26.00 FS

Parking Ratio
4.00/1,000 SF

Timing
**AVAILABLE
Q1 2025**

Talk about making a **first impression.**

**UNION
PARK**
7050 & 7070

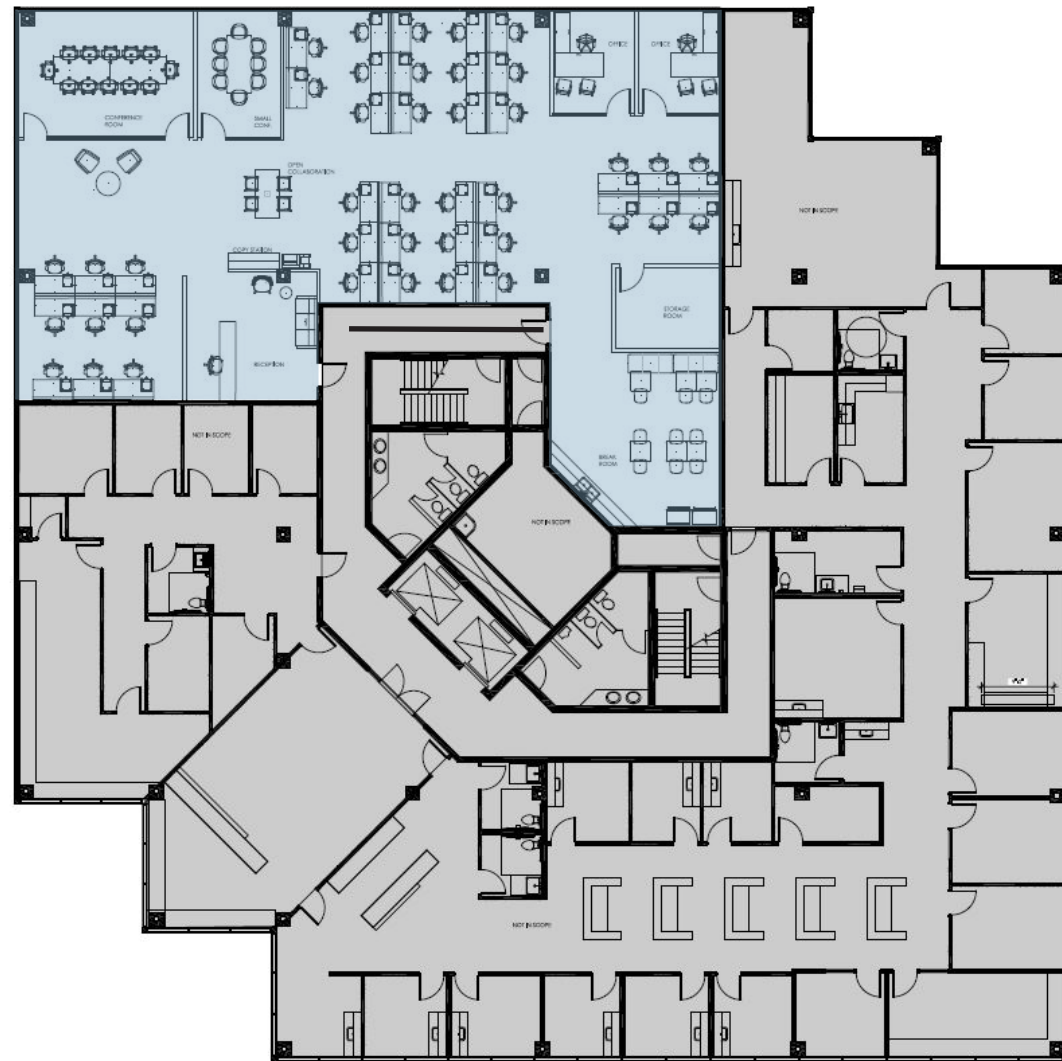




Available Space

7050 UNION PARK

FLOOR 5 | SUITE 500
AVAILABLE Q1 2025
4,710 SF



**UNION
PARK**
7050 & 7070

Area Amenities

UNION PARK
7050 & 7070

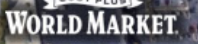
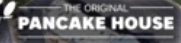
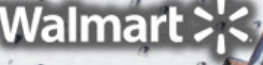
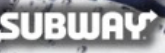
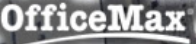
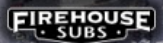
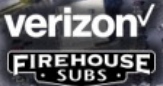


UNION PARK
7050 & 7070

900 E

Fort Union Blvd

S 1300 E



RESTAURANTS TO THE WEST

- Itto Sushi // The Midway
- Thai Spice Restaurant
- La Frontera Mexican Restaurant
- Kneaders Bakery & Cafe
- Rise & Grind Coffee // Landmark Grill
- Epicure Fine Food & Drink
- Hires Big H // Bohemian Brewery



7050

7070

**UNION
PARK** ||
7050 & 7070



CONTACT INFORMATION

David Nixon
david.nixon@jll.com
+1 801 456 9518

Jillian Johnson
jillian.johnson@jll.com
+1 801 456 9517

www.us.joneslanglasalle.com/saltlakecity

Jones Lang LaSalle Brokerage, Inc.
©2024 Jones Lang LaSalle LP, Inc. All rights reserved. All information contained herein is from sources deemed reliable; however, no representation or warranty is made to the accuracy thereof.