

Available SF 12,000 SF

Industrial For Lease

Building Size 12,000 SF

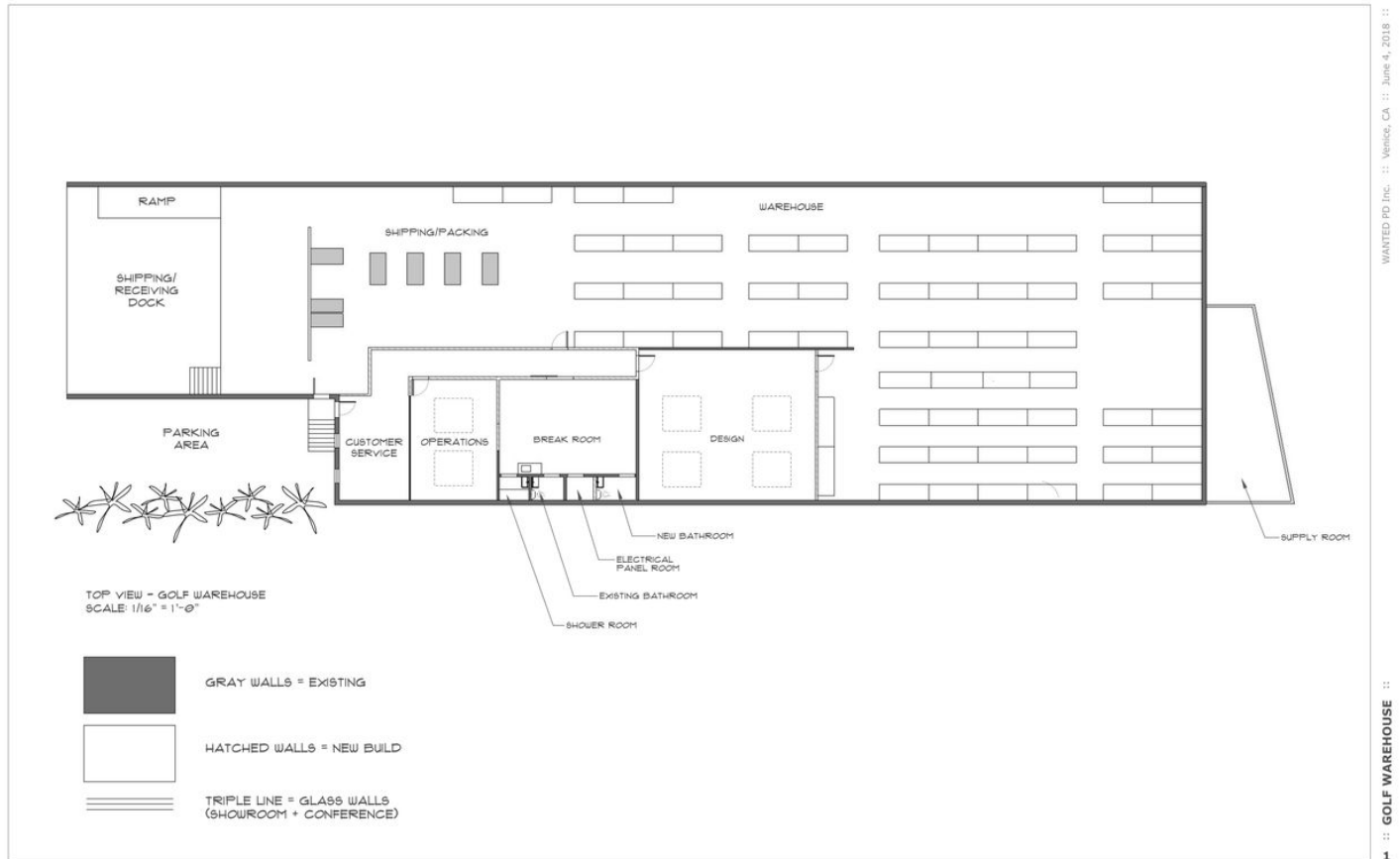


**Address:** 3571 Hayden Ave, Culver City, CA 90232

**Cross Streets:** Hayden Ave/Stellar Dr

Hard To Find Westside/Culver City Warehouse/Flex Space  
Located In The Heart Of The Hayden Tract  
Beautiful Exposed Arch Bow Truss Roof  
Located In Close Proximity To The Expo Line  
And Downtown Culver City  
Great For A Variety Of Light Industrial Or Commercial/Flex Uses

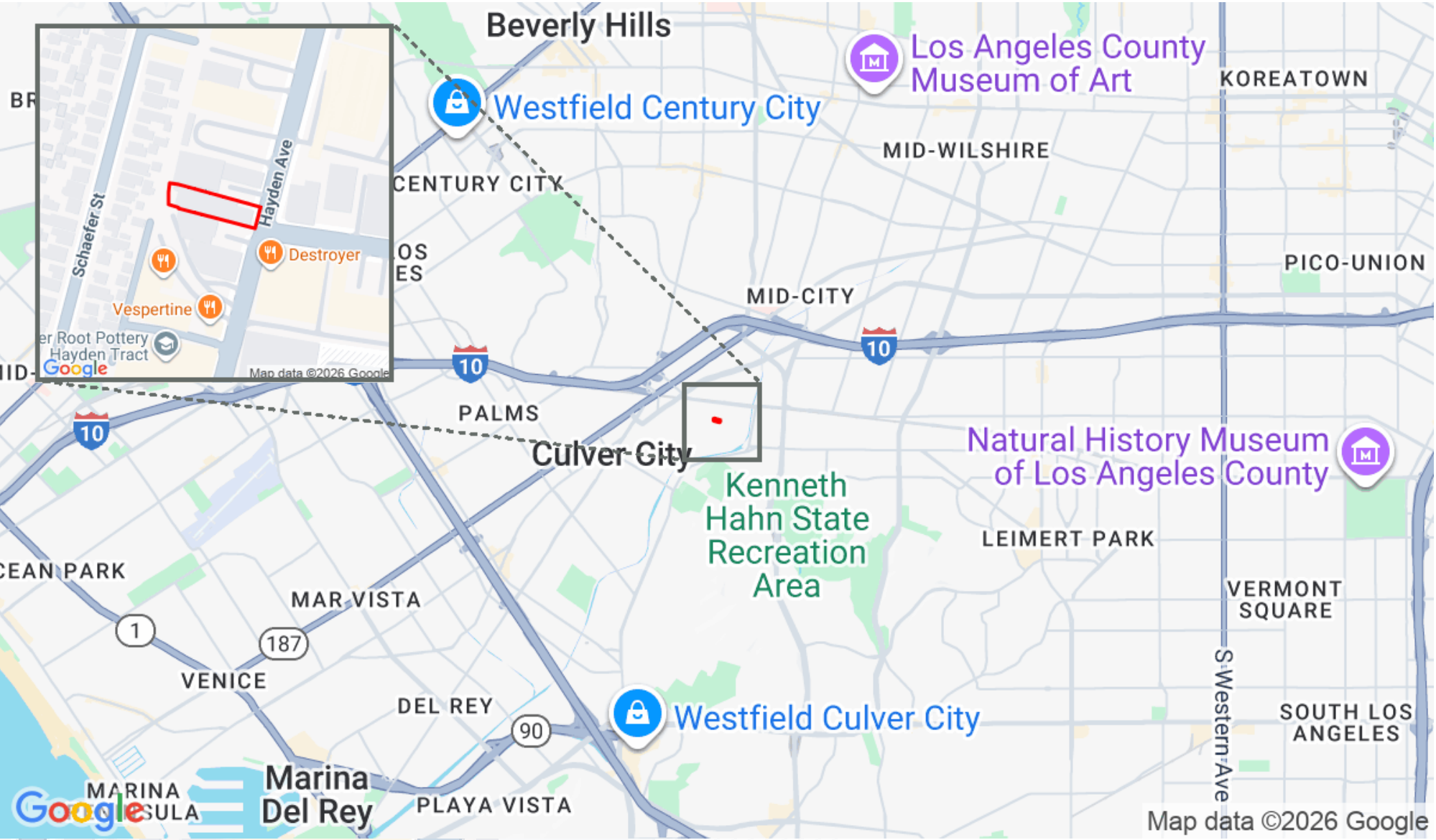
<b>Lease Rate/Mo:</b>	\$27,000	<b>Sprinklered:</b>	Yes	<b>Office SF / #:</b>	2,300 SF / 4
<b>Lease Rate/SF:</b>	\$2.25	<b>Clear Height:</b>	14'	<b>Restrooms:</b>	2
<b>Lease Type:</b>	Net	<b>GL Doors/Dim:</b>	0	<b>Office HVAC:</b>	Heat & AC
<b>Available SF:</b>	12,000 SF	<b>DH Doors/Dim:</b>	2 / 1: 18'x14' & 1: 12'x14'	<b>Finished Ofc Mezz:</b>	0 SF
<b>Minimum SF:</b>	12,000 SF	<b>A: 200 V: 240 O: 3 W:</b>		<b>Include In Available:</b>	No
<b>Prop Lot Size:</b>	0.35 Ac / 15,308 SF	<b>Construction Type:</b>	Concrete	<b>Unfinished Mezz:</b>	0 SF
<b>Term:</b>	3-10 Years	<b>Const Status/Year Blt:</b>	Existing / 1950	<b>Include In Available:</b>	No
<b>Sale Price:</b>	NFS	<b>Whse HVAC:</b>	No	<b>Possession:</b>	Now
<b>Sale Price/SF:</b>	NFS	<b>Parking Spaces: 4</b>	/ Ratio: 0.3:1/	<b>Vacant:</b>	Yes
<b>Taxes:</b>		<b>Rail Service:</b>	No	<b>To Show:</b>	Call broker
<b>Yard:</b>	No	<b>Specific Use:</b>	Light Industrial	<b>Market/Submarket:</b>	LA West
<b>Zoning:</b>	M1			<b>APN#:</b>	4206-002-046
<b>Listing #:</b>	41812558	<b>Listing Date:</b>	01/24/2025		



# 3571 Hayden Ave



The Altemus Company 1537 Pontius Avenue Los Angeles, CA 90025 | 310-478-7727



Justin Altemus  
justin@altemuscompany.com  
310-478-7729



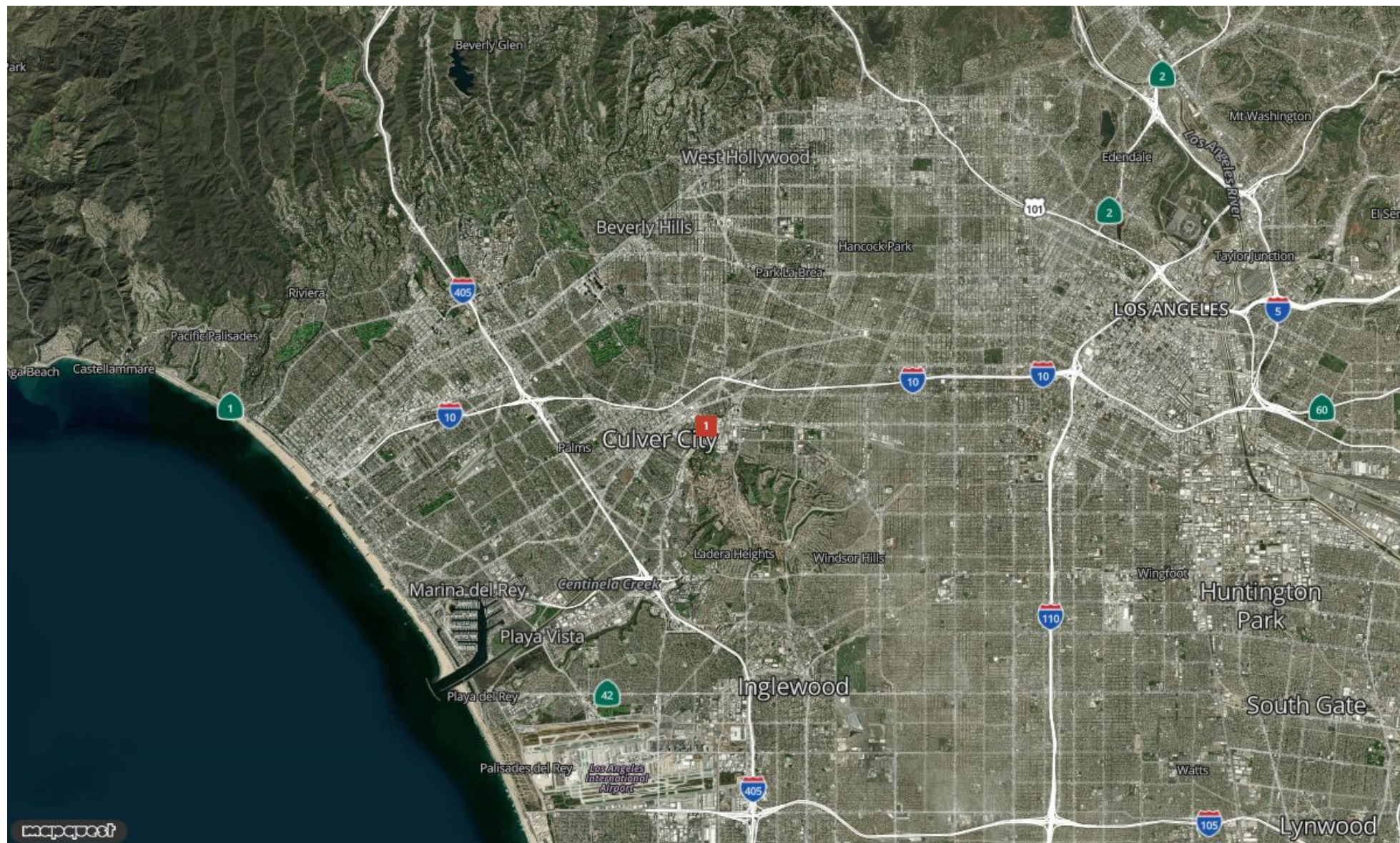
This information supplied herein is from sources we deem reliable. It is provided without any representation, warranty or guarantee, expressed or implied as to its accuracy. Prospective Buyer or Tenant should conduct an independent investigation and verification of all matters deemed to be material, including, but not limited to, statements of income and expenses. Consult your attorney, accountant, or other professional advisor

# Report for 3571 Hayden Ave, C...



The Altemus Company

1537 Pontius Avenue Los Angeles, CA 90025 | 310-478-7727



Justin Altemus

justin@altemuscompany.com

310-478-7729

AIRCRE Powered by MOODY'S