



FOR LEASE

**903 N 47TH ST
ROGERS, AR**

BARRINGTON CENTER II

**242 - 14,317 SF
AVAILABLE**

**FOR MORE INFORMATION
PLEASE CONTACT:**

MATT MOZZONI
mmozzoi@sagepartners.com

MATT IMHOFF, SIOR, CCIM
mimhoff@sagepartners.com

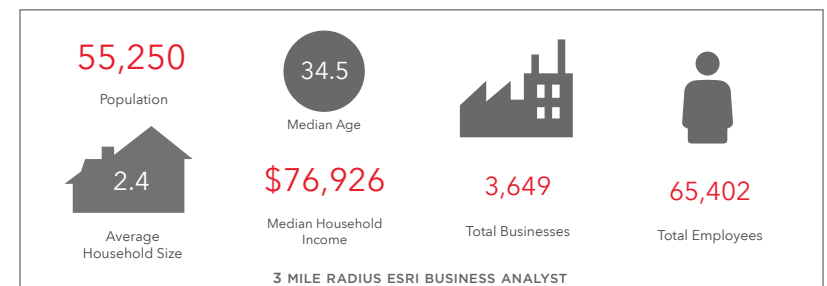
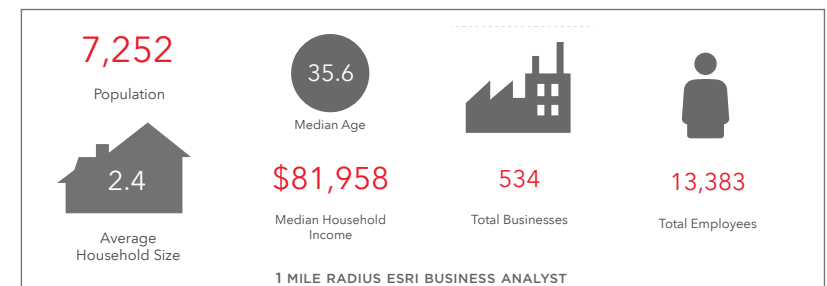
479 845 3000
sagepartners.com

PROPERTY HIGHLIGHTS

- 242 - 14,317 SF Available
- \$24.00/SF MG
- Building signage opportunities available
- Building amenities include 24-hour fitness center with shower access, abundant well-lit parking, and common area with lounge seating
- Located near SAM'S Club Home Office, New Walmart Home Office, Northwest Health, and within walking distance to many amenities
- Excellent visibility to I-49

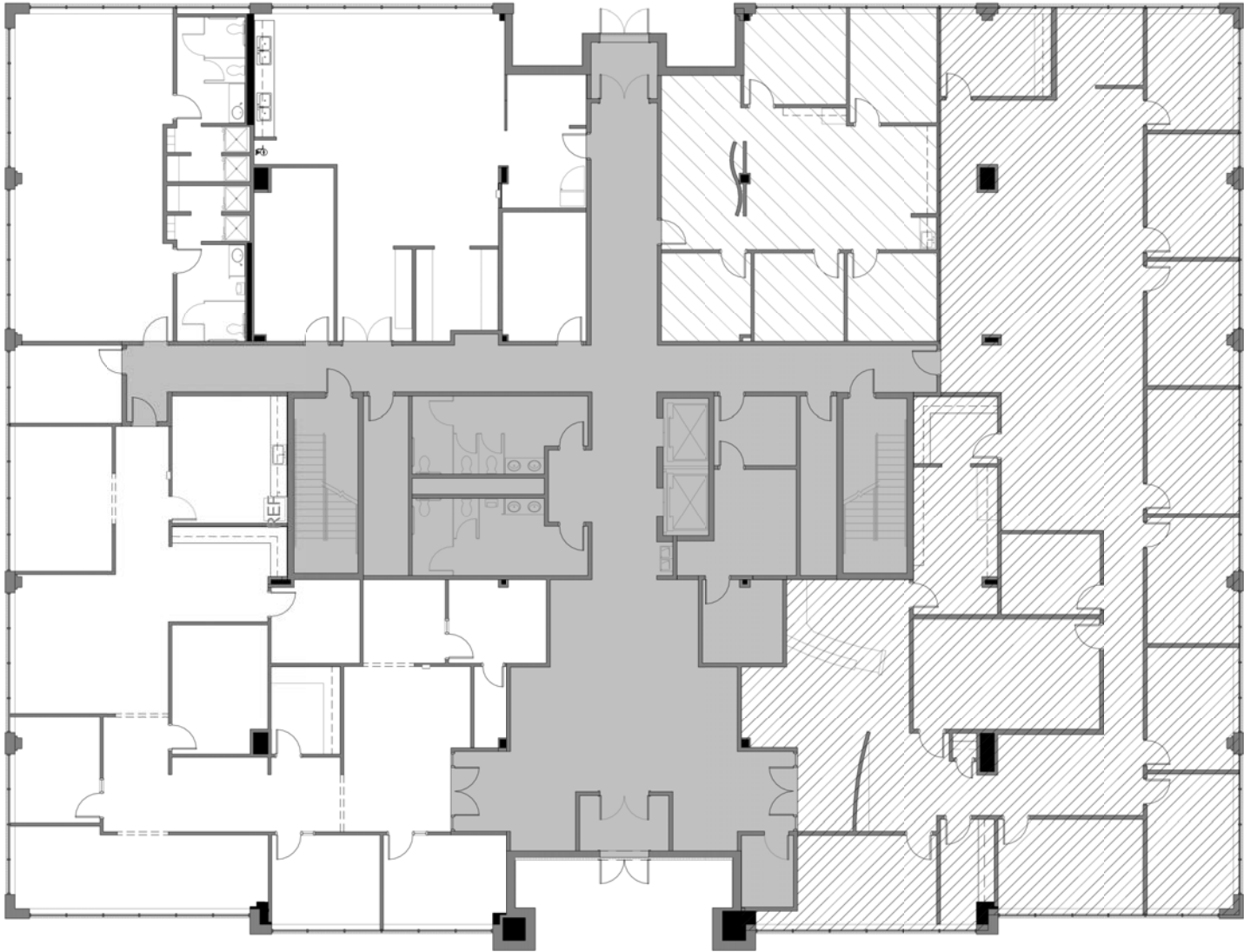


AVAILABLE SUITES	SIZE
104	242 SF ±
275	3,230 SF ±
400	5,881 SF ±
401	8,436 SF ±

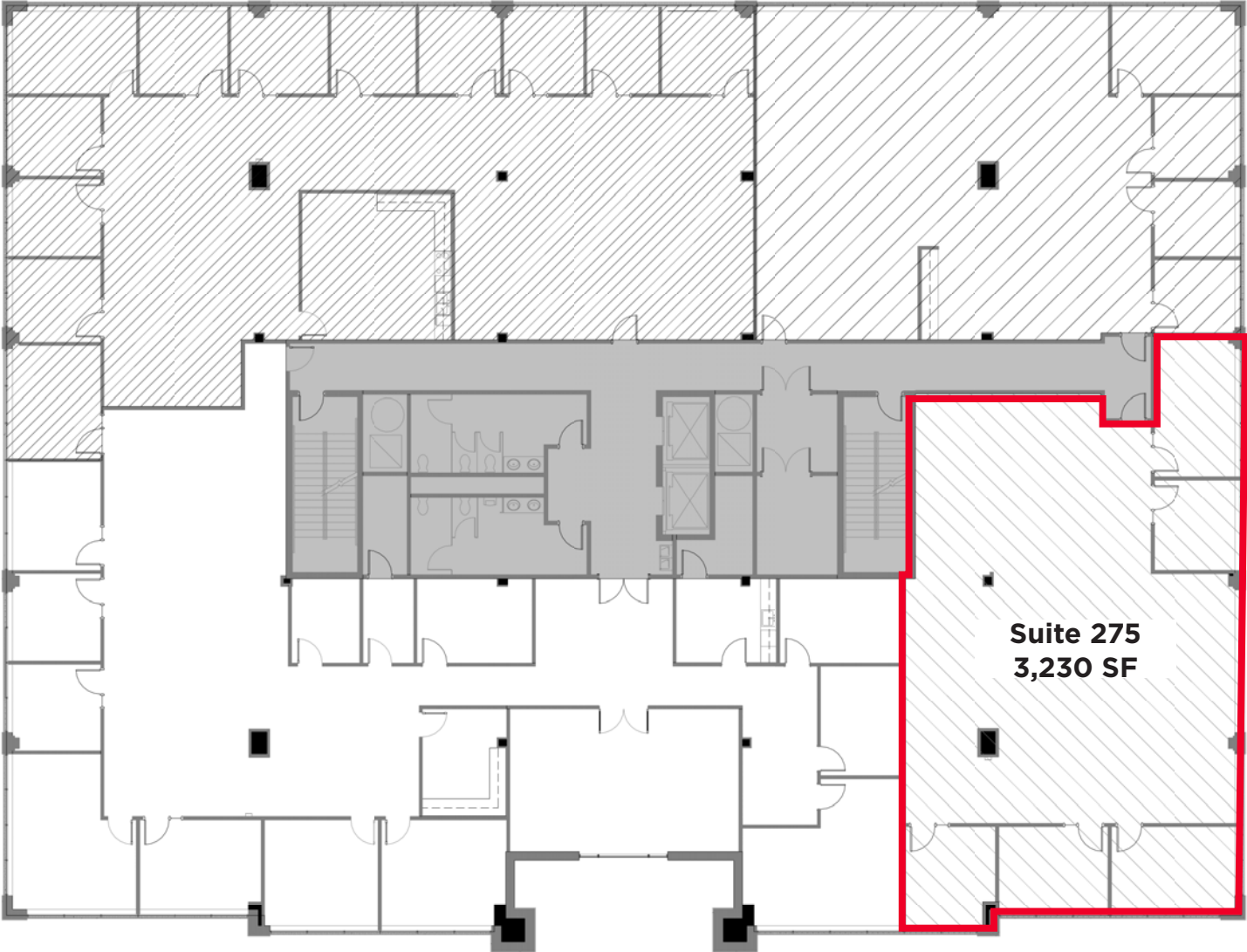


*Information deemed reliable but not guaranteed

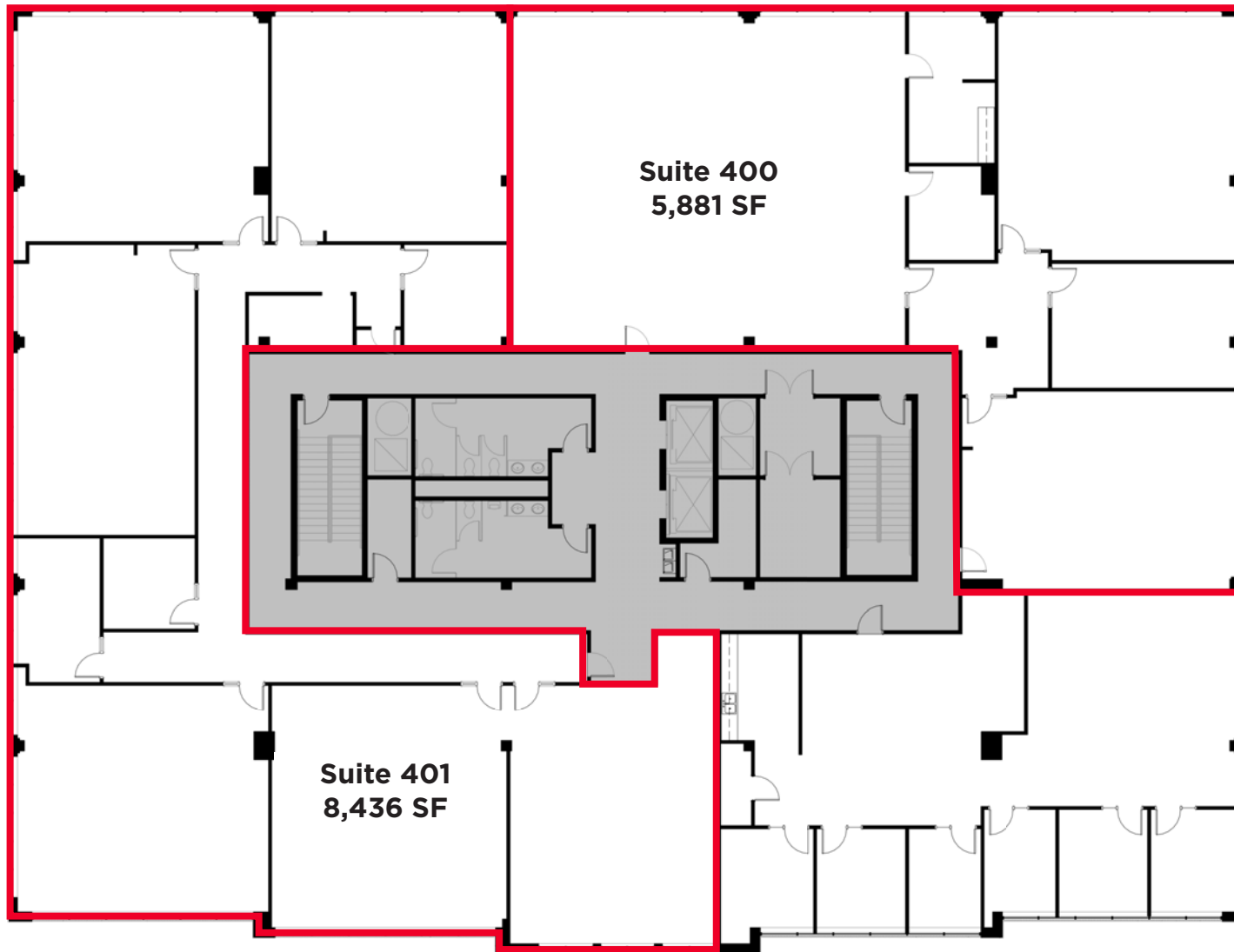
FIRST FLOOR PLAN 903 N 47TH STREET | ROGERS, AR



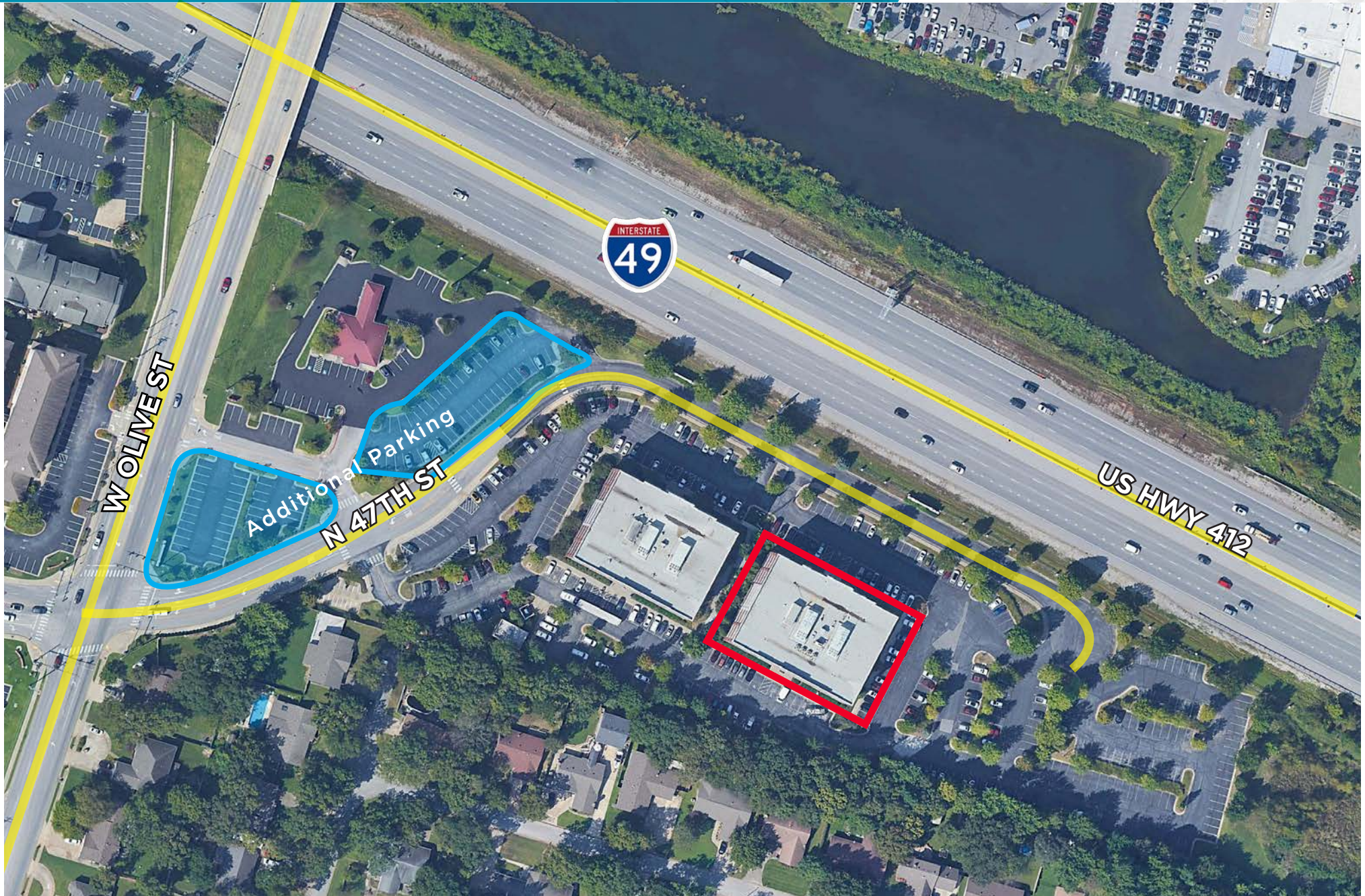
SECOND FLOOR PLAN 903 N 47TH STREET | ROGERS, AR

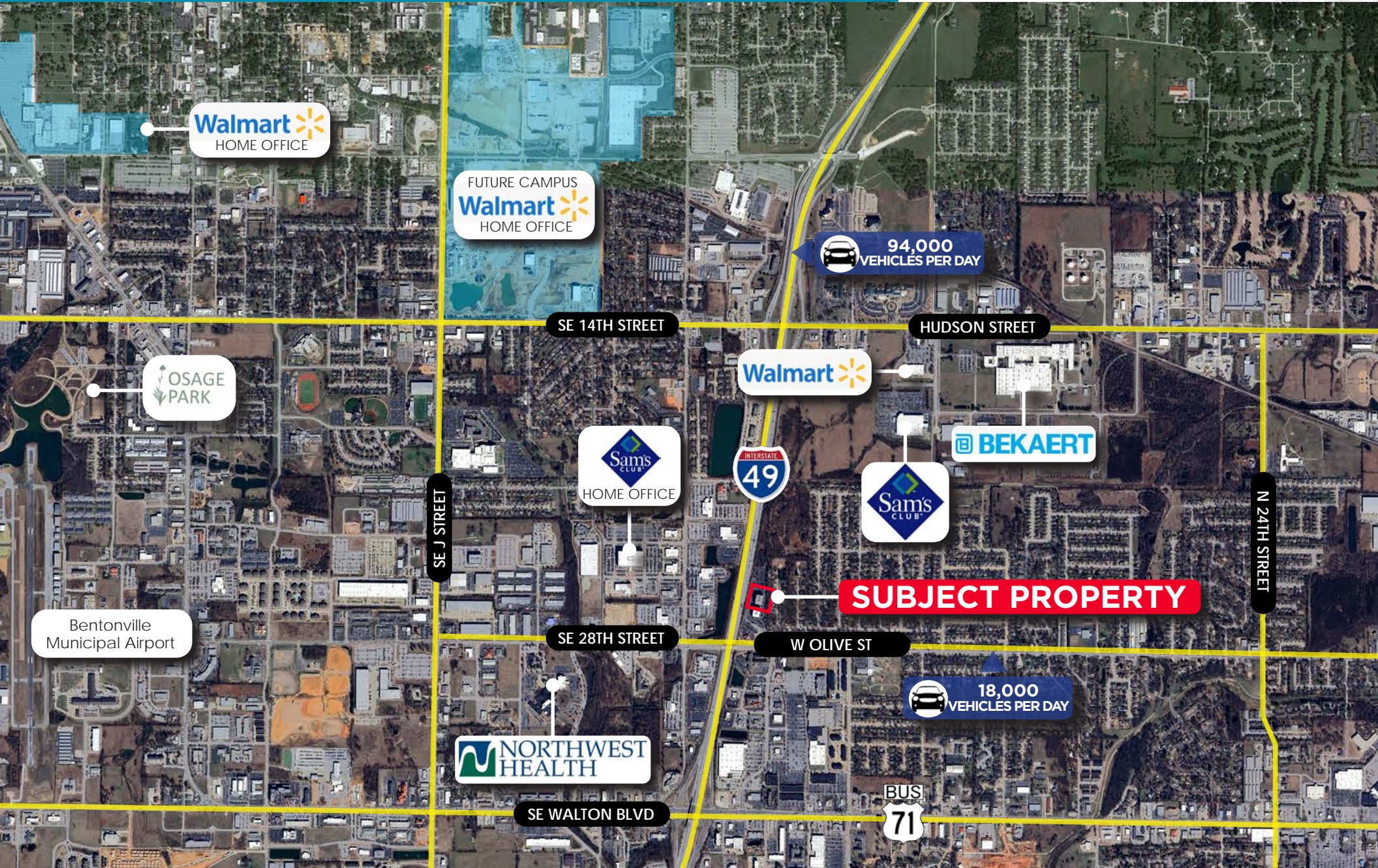


***Suites 400/401 can be combined for 14,317 SF**



SITE PLAN 903 N 47TH STREET | ROGERS, AR





Walmart
HOME OFFICE

FUTURE CAMPUS
Walmart
HOME OFFICE

94,000
VEHICLES PER DAY

SE 14TH STREET

HUDSON STREET

OSAGE
PARK

Walmart

BEKAERT

Sam's CLUB
HOME OFFICE

INTERSTATE
49

Sam's CLUB

N 24TH STREET

Bentonville
Municipal Airport

SE J STREET

SUBJECT PROPERTY

SE 28TH STREET

W OLIVE ST

18,000
VEHICLES PER DAY

NORTHWEST HEALTH

SE WALTON BLVD

BUS
71