

# 1421 WANDA ROAD ORANGE



1421 N Wanda Rd | Orange  
Office and Medical Building  
For Lease



## Building Summary

- Great corner location at N Wanda Rd & E Katella Ave with street visibility
- Ample surface parking for tenants and visitors
- Excellent freeway access to the 55, 22, and 57 Freeways
- Close proximity to The Village at Orange and Old Towne Orange
- Surrounded by established residential neighborhoods, offices, and retail centers
- Outstanding opportunity for professional, medical, or service-oriented tenants
- Call Exclusive Agents to Schedule a tour



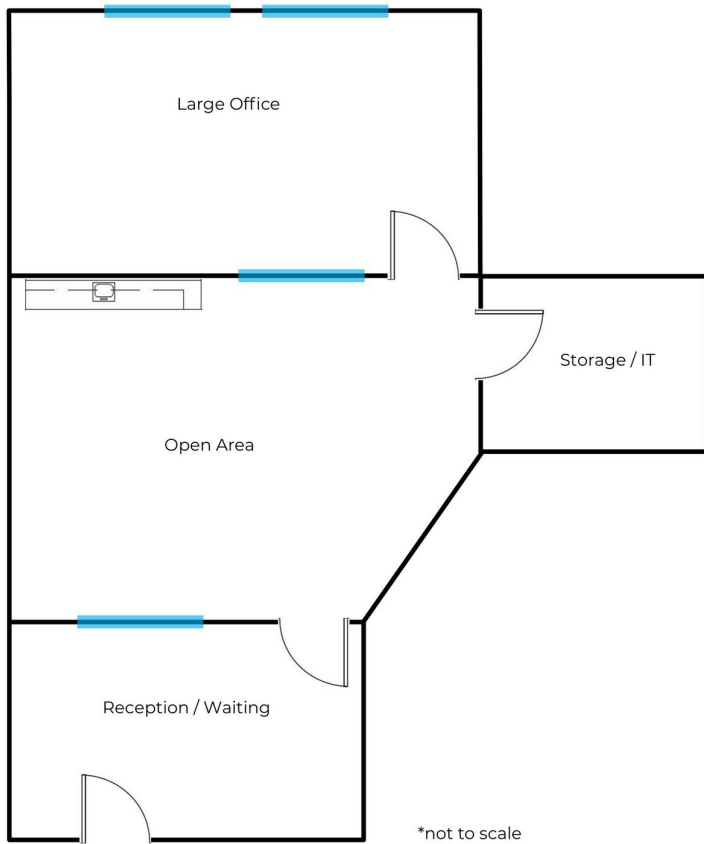


## Property Overview

1421 N Wanda Rd, Orange is prominently located at the corner of N Wanda Road and E Katella Avenue. This professional building offers excellent visibility and convenient access for tenants and visitors. The property features ample surface parking, attractive landscaping, and monument signage along major thoroughfares. Its central Orange location provides quick connectivity to the 55, 22, and 57 Freeways, allowing easy access throughout Orange County. Surrounded by established residential communities, offices, and retail centers, the site is just minutes from The Village at Orange and Old Towne Orange.

# 1421 N WANDA RD **ORANGE**

**Floor Plan- Suite 190**  
+/- 700 Square Feet



## Exclusive Agents

### **JAIMESON HEARNE**

Principal  
714.564.7146  
jhearne@lee-associates.com  
CalDRE #01925107

### **SEAN FANG, CCIM**

Senior Associate  
310.965.1774  
sfang@leelalb.com  
CalDRE #01745123



All information contained herein has been provided by Lessor and/or third parties, but has not been independently verified by Lee & Associates or its agent(s). Lessee and interested parties should independently verify all information communicated by these sources.



# 1421 N WANDA RD ORANGE



## Exclusive Agents

### JAIMESON HEARNE

Principal  
714.564.7146  
jhearne@lee-associates.com  
CalDRE #01925107

### SEAN FANG, CCIM

Senior Associate  
310.965.1774  
sfang@leelalb.com  
CalDRE #01745123

