

SWC 183rd & LaGrange Road

Orland Park, IL 60467

DEVELOPMENT OPPORTUNITY



SWC 183rd & LaGrange Road | Orland Park, IL 60467

DEVELOPMENT OPPORTUNITY

john greene Commercial | 1311 S Route 59, Naperville, IL 60564 | 630.229.2290



OFFERING SUMMARY

Sale Price: \$1,399,000

Lot Size: 11.3± AC

Zoning: Mixed Use

Taxes: \$42,173 (2023)

PROPERTY OVERVIEW

11± Acres of improved land for sale at a signalized intersection. I-80 / LaGrange Road 4 way interchange close by. Multiple proposed uses include Retail, Hotel, Multi Family and Office.

PROPERTY HIGHLIGHTS

- 1/2 Mile North of I-80
- Signalized intersection at Orland Parkway
- 40,600 VPD on LaGrange Road

Chris Condon
chriscondon@johnngreenecommercial.com
815.693.3005

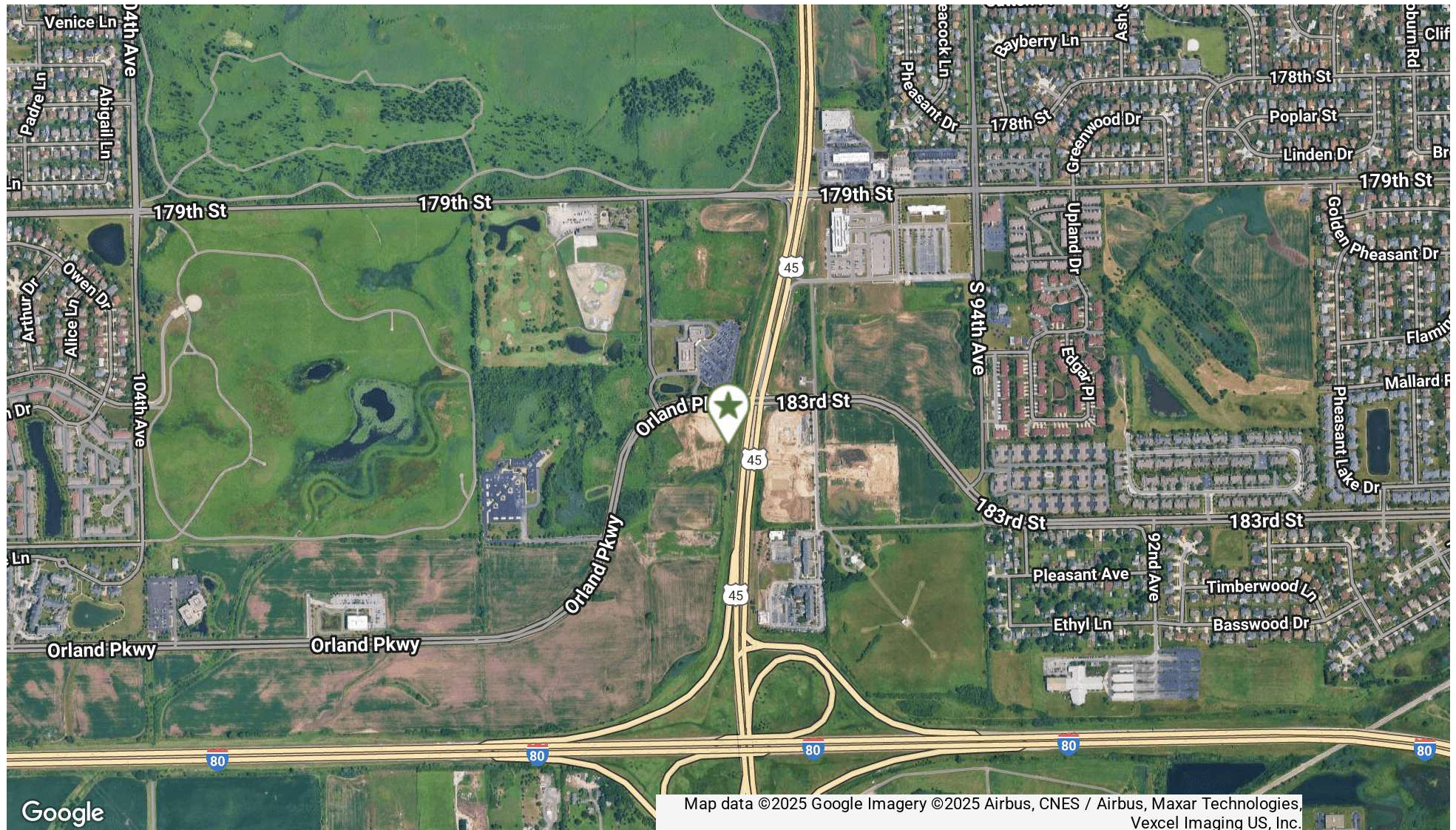
The information contained herein is from sources john greene Real Estate deems reliable, but is not guaranteed. This offer may be withdrawn from the market or be subject to a change in price or terms without advance notice. Seller reserves the right to reject any and all offers. Duplication is expressly prohibited. 2019

john
greene
COMMERCIAL

SWC 183rd & LaGrange Road | Orland Park, IL 60467

DEVELOPMENT OPPORTUNITY

john greene Commercial | 1311 S Route 59, Naperville, IL 60564 | 630.229.2290



Chris Condon

chriscondon@johngreenecommercial.com

815.693.3005

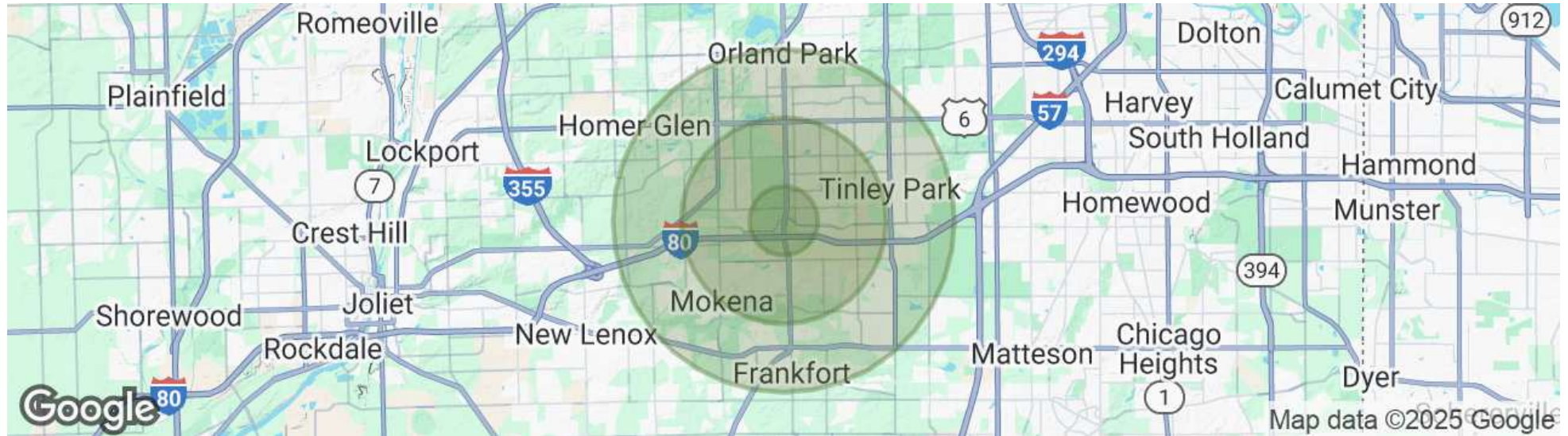
The information contained herein is from sources john greene Real Estate deems reliable, but is not guaranteed. This offer may be withdrawn from the market or be subject to a change in price or terms without advance notice. Seller reserves the right to reject any and all offers. Duplication is expressly prohibited. 2019

john
greene
COMMERCIAL

SWC 183rd & LaGrange Road | Orland Park, IL 60467

DEVELOPMENT OPPORTUNITY

john greene Commercial | 1311 S Route 59, Naperville, IL 60564 | 630.229.2290



POPULATION

	1 MILE	3 MILES	5 MILES
Total population	6,078	65,000	168,847
Median age	42.5	39.9	40.3
Median age (Male)	40.5	37.8	38.4
Median age (Female)	43.5	41.0	41.4

HOUSEHOLDS & INCOME

	1 MILE	3 MILES	5 MILES
Total households	2,109	22,473	59,426
# of persons per HH	2.9	2.9	2.8
Average HH income	\$110,806	\$99,242	\$95,902
Average house value	\$382,106	\$346,201	\$342,254

* Demographic data derived from 2020 ACS - US Census

Chris Condon

chriscondon@johnngreenecommercial.com

815.693.3005

The information contained herein is from sources john greene Real Estate deems reliable, but is not guaranteed. This offer may be withdrawn from the market or be subject to a change in price or terms without advance notice. Seller reserves the right to reject any and all offers. Duplication is expressly prohibited. 2019

