

For Lease

# THE BLACKBOX

1300 W Burnside St, Portland, OR 97205

Apex Real Estate Partners  
415 NW 11<sup>th</sup> Avenue, Portland, OR 97209  
503.595.2840  
[www.apexcre.com](http://www.apexcre.com)

Lindsay Murphy  
Director  
503.267.5083  
[Lindsay@apexcre.com](mailto:Lindsay@apexcre.com)



**APEX**  
REAL ESTATE PARTNERS



# CREATIVE OFFICE SPACE FOR LEASE

## FREE BASE RENT

6 months free base rent  
with a 3 year deal

12 months free base  
rent for 5 year deal  
or longer



Second floor ± 5,303 RSF



\$21.00/RSF NNN



Move-in ready with an open and collaborative layout,  
1 private office, 3 conference rooms, great kitchen /  
entertaining space, restrooms and a shower



High ceilings and oversized windows (some are operable)  
with excellent natural south and east facing light



Great visibility on an active corner of West Burnside



Ample street parking and multiple lots within blocks of  
the building



Excellent public transportation access



The Blackbox retailers include the acclaimed Nong's Khao  
Man Gai, Le Labo, Bonobos, Aēsop, and Wun Two barber salon



Ideal location in Downtown Portland's vibrant West End  
neighborhood



*Potential ownership opportunity. Inquire with broker for  
more information.*



CONCEPT IMAGE



CONCEPT IMAGE



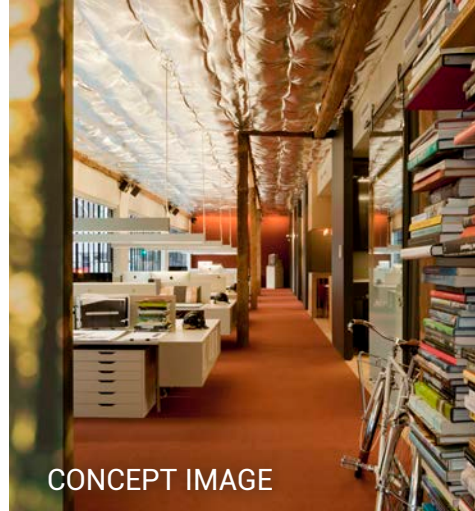
CONCEPT IMAGE



CONCEPT IMAGE



CONCEPT IMAGE



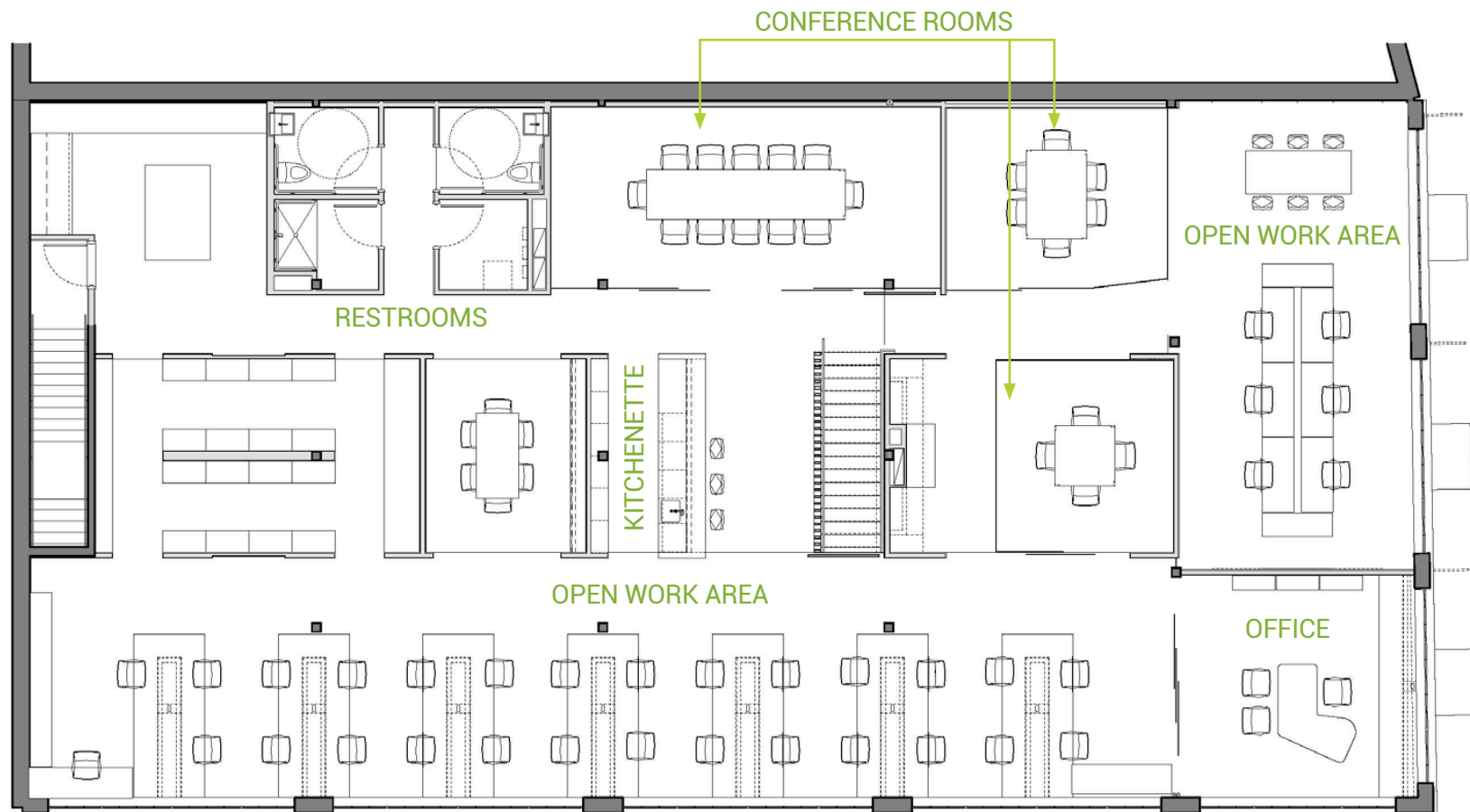
CONCEPT IMAGE



CONCEPT IMAGE

# SECOND FLOOR

## ± 5,303 RSF





**Portland has been ranked as one of America's Top 20 Best Places to Work, Best Places to Live and one of the top 10 Most Energetic Cities.** The West End lives up to Portland's reputation, offering an eclectic mix of some of the best dining, entertainment, local goods, boutiques, destination hotels, thriving nightlife, modern upscale apartments, galleries, and a museum with artists such as Van Gogh and Picasso in its permanent collection. National companies such as Target, Ace Hotel and Stumptown Coffee Roasters have established themselves in this up-and-coming district as well, further securing the upward trajectory of the area. The Blackbox is excellently located within an easy walk to these countless attractions.

