

301 ROUTE 17

HILLBURN, NY 10931

OFFICE/INDUSTRIAL FOR LEASE



Property Description

Elevate your business at this premier property, which consists of 1500SF of office space and 500SF of industrial. Offering customizable floor plans, first-class amenities, and responsive management, this space is designed for modern success. With ample parking, convenient access to major routes, and premium finishes, this property provides a professional and dynamic environment for your business to thrive. Asking \$3,050 per month plus \$250 per month in utilities.

Offering Summary

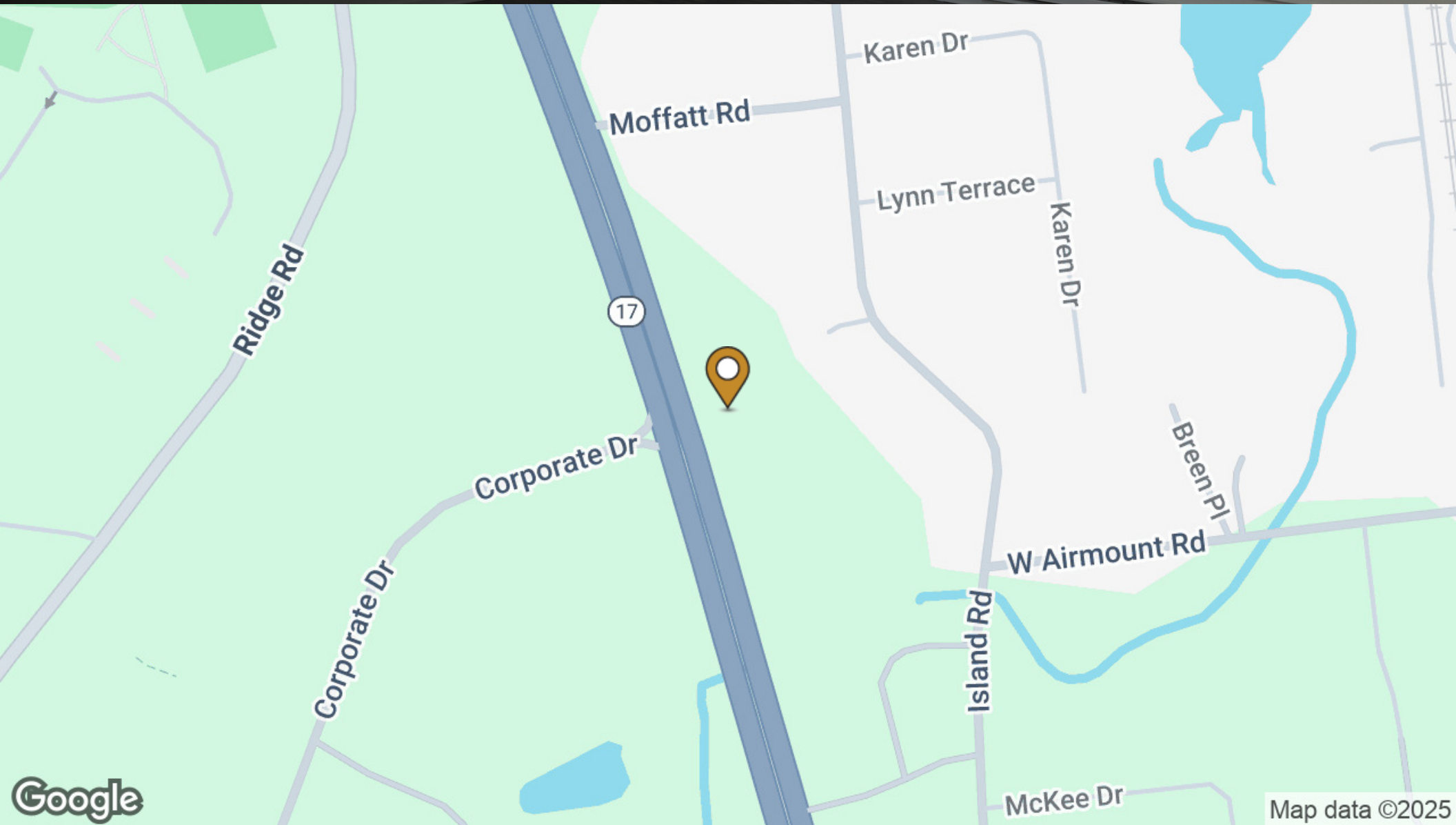
Lease Rate:	\$3,300.00 per month (NNN)
Available SF:	2,000 SF
Building Size:	2,000 SF

Demographics	0.3 Miles	0.5 Miles	1 Mile
Total Households	96	355	2,586
Total Population	235	858	6,627
Average HH Income	\$140,529	\$141,008	\$165,171

301 ROUTE 17

HILLBURN, NY 10931

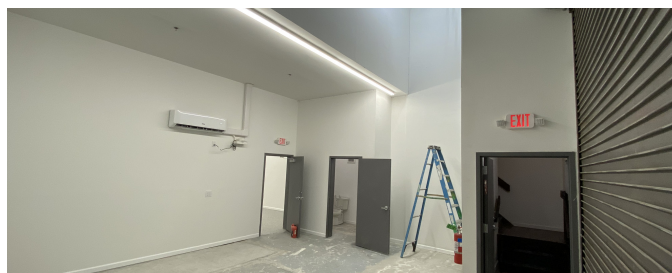
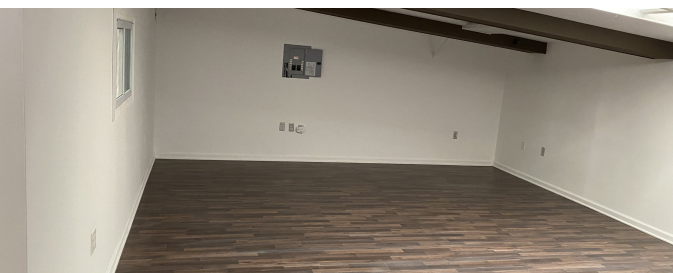
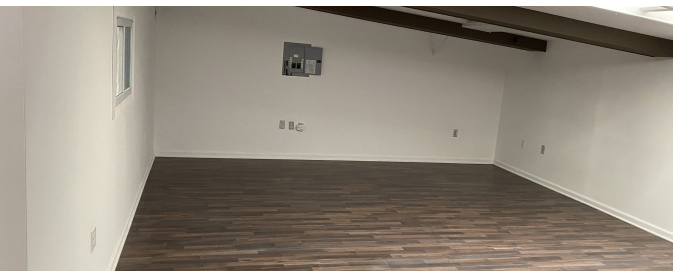
OFFICE BUILDING FOR LEASE



301 ROUTE 17

HILLBURN, NY 10931

OFFICE BUILDING FOR LEASE



301 ROUTE 17

HILLBURN, NY 10931

OFFICE BUILDING FOR LEASE

Population	0.3 Miles	0.5 Miles	1 Mile
Total Population	235	858	6,627
Average Age	43	44	43
Average Age (Male)	42	42	42
Average Age (Female)	44	45	44

Households & Income	0.3 Miles	0.5 Miles	1 Mile
Total Households	96	355	2,586
# of Persons per HH	2.4	2.4	2.6
Average HH Income	\$140,529	\$141,008	\$165,171
Average House Value	\$610,152	\$616,075	\$686,353

Demographics data derived from AlphaMap

