

7757 RONDA DRIVE
CANTON, MICHIGAN

INDUSTRIAL FOR LEASE
5,000 – 7,000 Square Feet Available



**SIGNATURE
ASSOCIATES**
KNOW SIGNATURE | KNOW RESULTS



PROPERTY FEATURES

- 5,000 – 7,000 square feet available
- Great storage solution with flexible terms
- 18' clear height
- (1) 12' x 14' grade level door
- 15 dedicated parking spaces
- Air-conditioned warehouse
- LED lights
- Zoned light industrial
- 1200 amps, 240 volts, heavy power
- Lease Rate: \$8.25/sq. ft. Gross



For more information, please contact:

CHRISTOPHER M. D'ANGELO
(248) 948 0109
cdangelo@signatureassociates.com

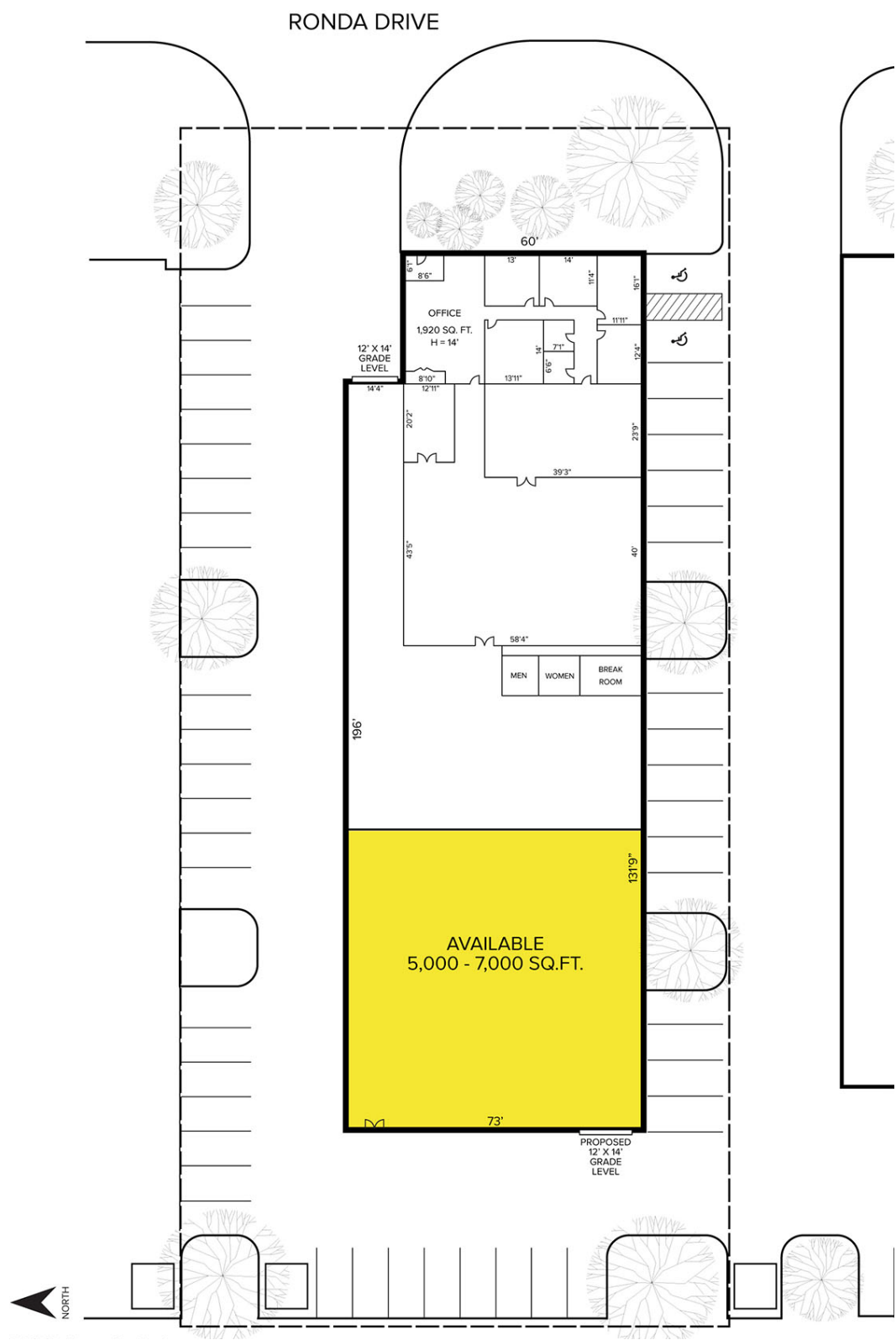
ALEX TIMMIS
(248) 359 0623
atimmis@signatureassociates.com

SIGNATURE ASSOCIATES
One Towne Square, Suite 1200
Southfield, MI 48076
www.signatureassociates.com

7757 Ronda Drive – Canton, Michigan
Industrial For Lease

5,000 – 7,000
Square Feet
AVAILABLE

Floor Plan



For more information, please contact:
CHRISTOPHER M. D'ANGELO
(248) 948 0109
cdangelo@signatureassociates.com

ALEX TIMMIS
(248) 359 0623
atimmis@signatureassociates.com

SIGNATURE ASSOCIATES
One Towne Square, Suite 1200
Southfield, MI 48076
www.signatureassociates.com

7757 Ronda Drive – Canton, Michigan

Industrial For Lease

5,000 – 7,000
Square Feet
AVAILABLE

Aerial



For more information, please contact:

CHRISTOPHER M. D'ANGELO
(248) 948 0109
cdangelo@signatureassociates.com

ALEX TIMMIS
(248) 359 0623
atimmis@signatureassociates.com

SIGNATURE ASSOCIATES
One Towne Square, Suite 1200
Southfield, MI 48076
www.signatureassociates.com

Information is subject to verification and no liability for errors or omissions is assumed. Price is subject to change and listing withdrawal.