

525

W.
Schrock
Road

COLUMBUS, OH

CBRE





PROPERTY DESCRIPTION

525 W Schrock Road, once 735 Ceramic Place, is a 33,444 sq. ft., 2-story office building located in the Westerville submarket.

- First Floor - 4,256 sq. ft. available for lease
- Second Floor - 1,500 - 9,000 sq. ft. available for lease
- 5,856 sq. ft. warehouse space with dock
- 33,444 total sq. ft. situated on 2.29 acres
- Year Built: 1991 / renovated 2004
- Scenic wooded setting with ravine
- Zoning: PID (Planned Industrial District)
- Parking Ratio: 4/1,000
- Exterior monument signage
- Nearby dining, shopping and hotel amenities
- Lease Rate: \$10.50/Sq. Ft. NNN
- Estimated Operating Expenses: \$7.21/Sq. Ft. (includes taxes,



WESTERVILLE



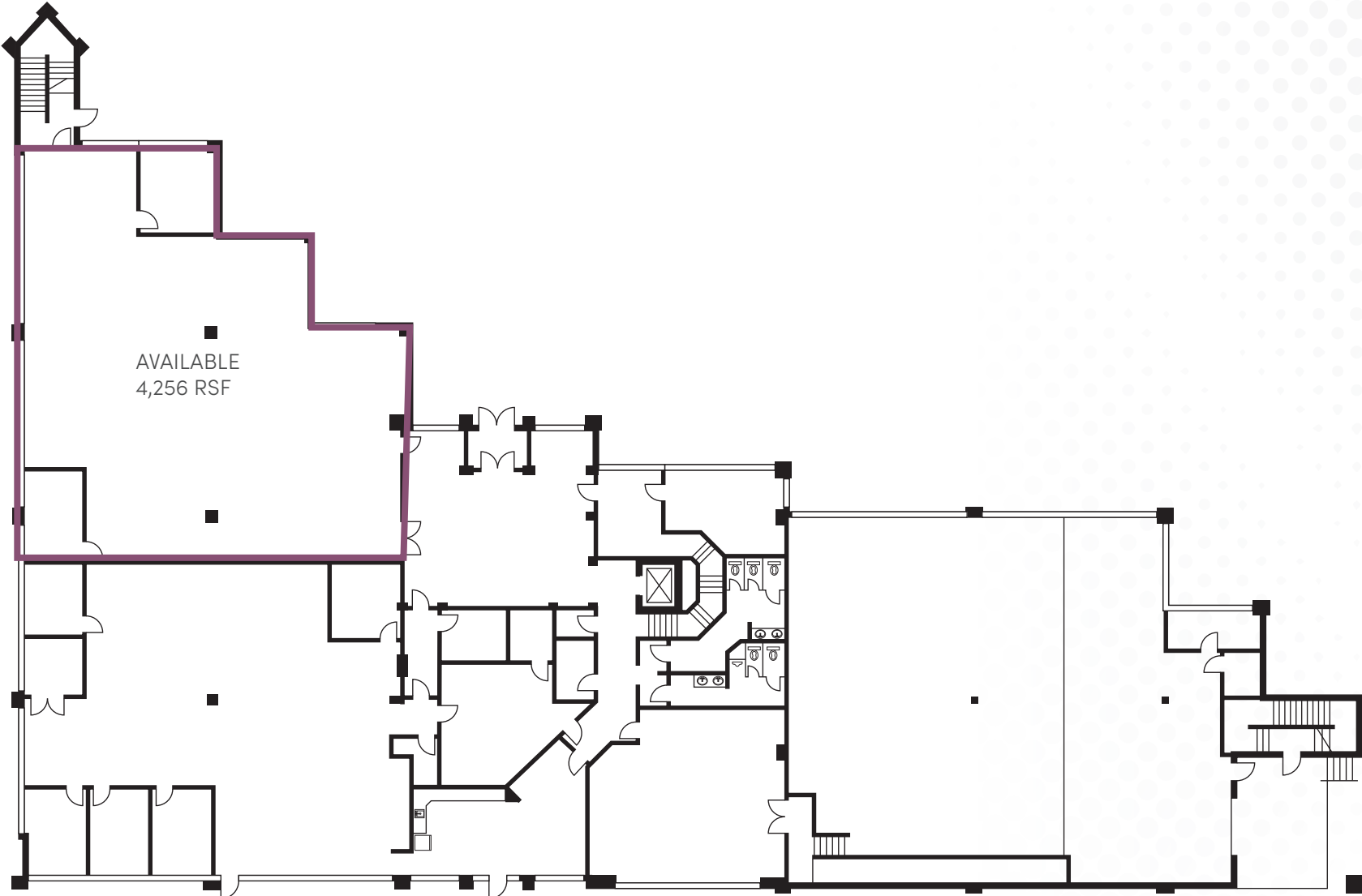
1,500 - 14,756 SF
AVAILABLE



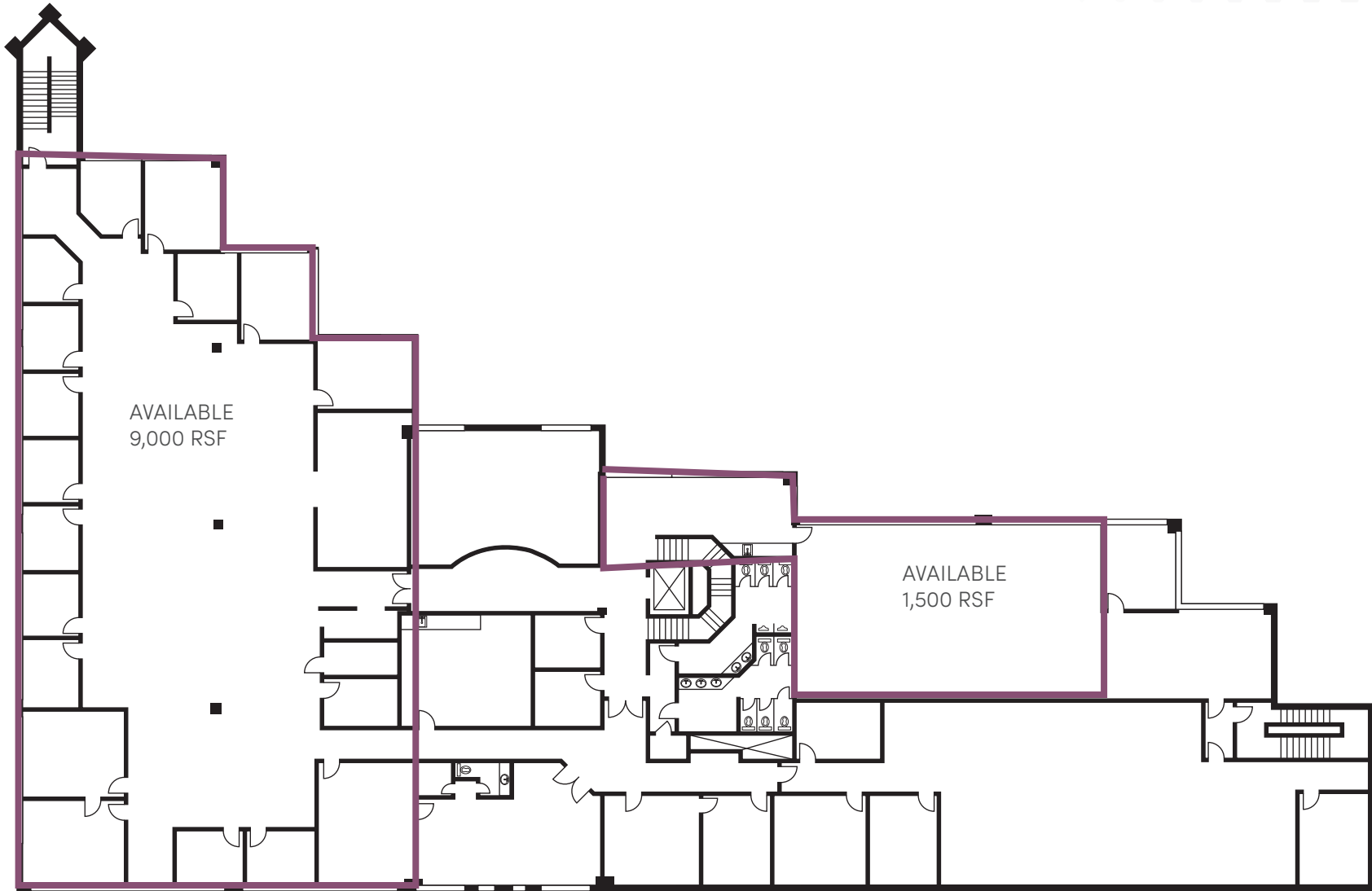
2-STORY OFFICE

525 W SCHROCK ROAD

Floor Plan - 1st Floor



Floor Plan - 2nd Floor





525 W SCHROCK ROAD

LOCATION OVERVIEW

- » +/- 1 Mile to I-270
- » 10 Minutes to John Glenn International Airport
- » 20 Minutes to downtown Columbus
- » 5 Minutes to Mt. Carmel/St. Ann's Hospital



525

W. Schrock
Road

Westerville, OH

CONTACT US

Don Matsanoff

First Vice President

+1 614 430 5000

don.matsanoff@cbre.com

Jeni Jordan

Associate

+1 614 430 5073

jennifer.jordan1@cbre.com

© 2026 CBRE, Inc. All rights reserved. This information has been obtained from sources believed reliable, but has not been verified for accuracy or completeness. You should conduct a careful, independent investigation of the property and verify all information. Any reliance on this information is solely at your own risk. CBRE and the CBRE logo are service marks of CBRE, Inc. All other marks displayed on this document are the property of their respective owners, and the use of such logos does not imply any affiliation with or endorsement of CBRE. Photos herein are the property of their respective owners. Use of these images without the express written consent of the owner is prohibited.



CBRE