



**22810 Quicksilver Dr**  
22810 Quicksilver Drive, Sterling, VA 20166



## AVAILABILITY:

- Available
- Full Stand-Alone Building
- 28,709 SF

## PROPERTY HIGHLIGHTS:

- Zoned PDGI
- Columns: 60'-"x42'6" column spacing
- 2 bathrooms
- 14 docks (1 concrete ramp, 1 dock leveler)
- Ceiling Height: 26'-28' clear
- Building depth 120'
- 2.1/1,000 Parking
- 120ft truck court

**NEW CLASS A INDUSTRIAL FOR LEASE**

CHASE STEWART  
cstewart@klnb.com  
703-268-2732

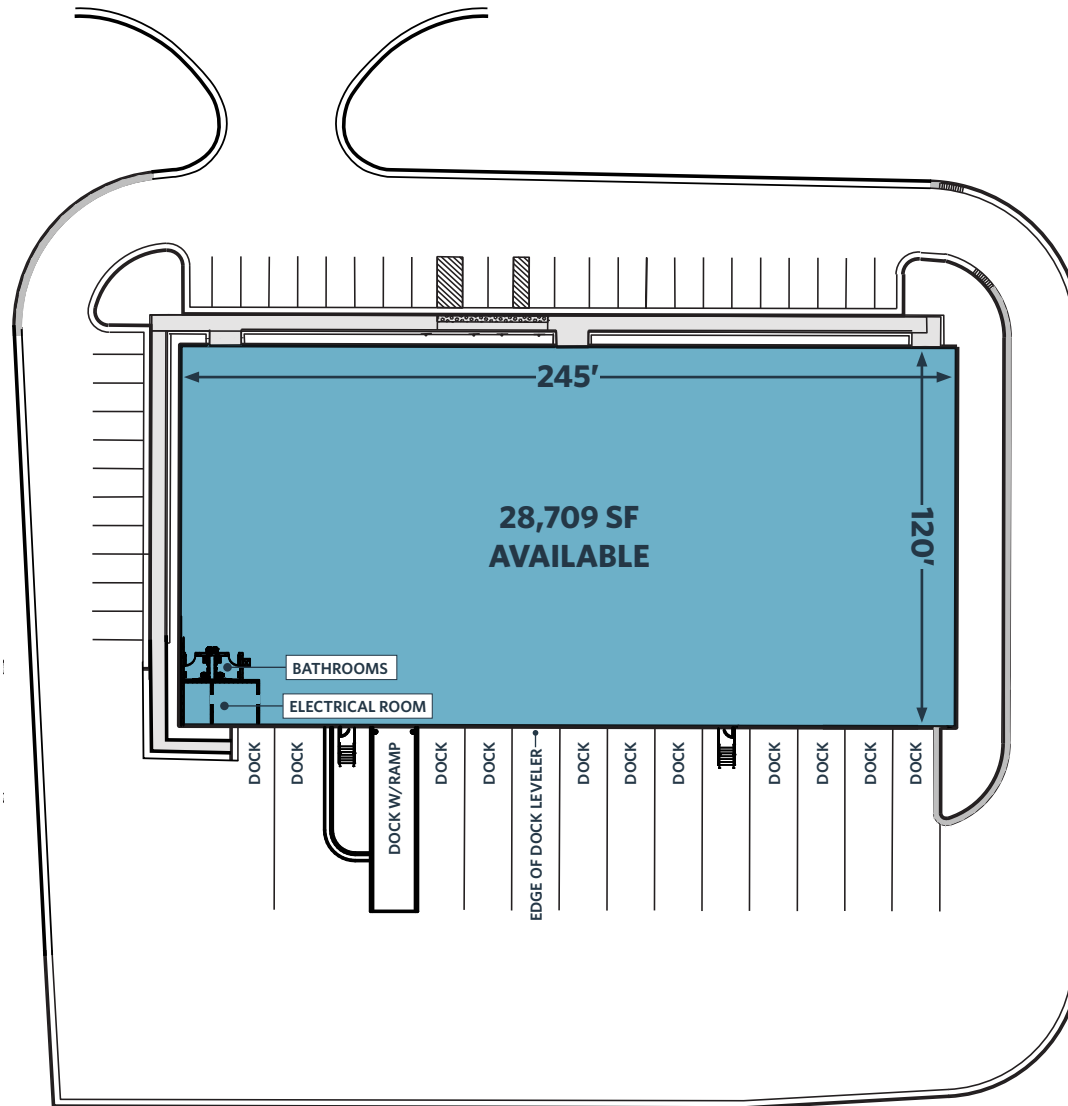
RYAN GOELLER  
rgoeller@klnb.com  
703-268-2731

JEFF TARAE  
jtarae@klnb.com  
703-268-2741

TYLER CUMBERLAND  
tcumberland@klnb.com  
703-268-2720

8065 Leesburg Pike, Suite 700  
Tysons, VA 22182  
klnb.com

**klnb.com**



## SITE PLAN

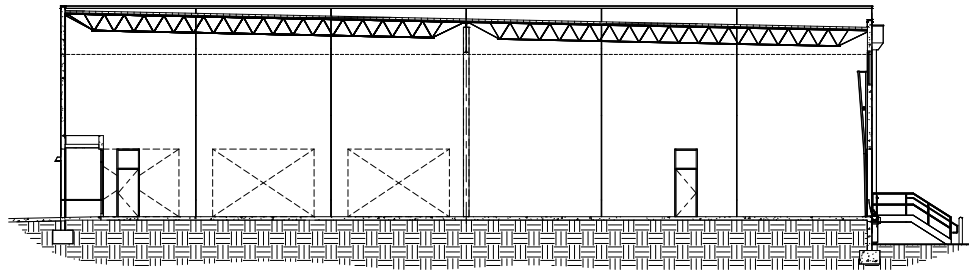
### 22810 QUICKSILVER DR

CHASE STEWART  
cstewart@klnb.com  
703-268-2732

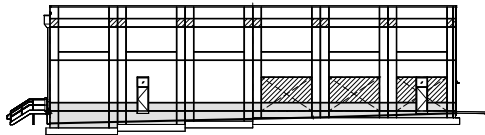
RYAN GOELLER  
rgoeller@klnb.com  
703-268-2731

JEFF TARAE  
jtarae@klnb.com  
703-268-2741

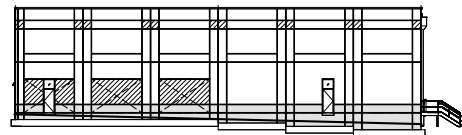
TYLER CUMBERLAND  
tcumberland@klnb.com  
703-268-2720



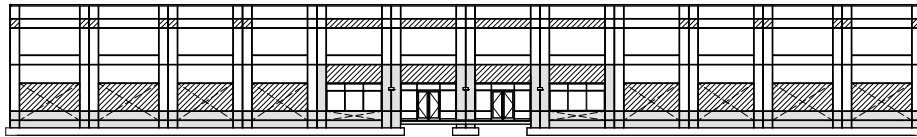
BUILDING SECTION



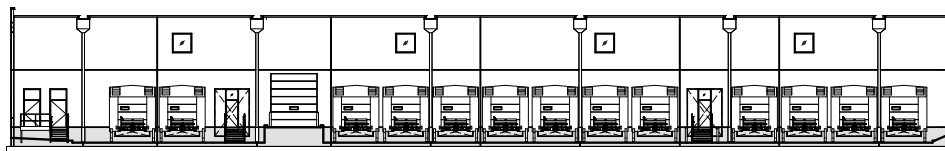
EAST ELEVATION



WEST ELEVATION



NORTH ELEVATION



SOUTH ELEVATION



ELEVATIONS/PHOTOS

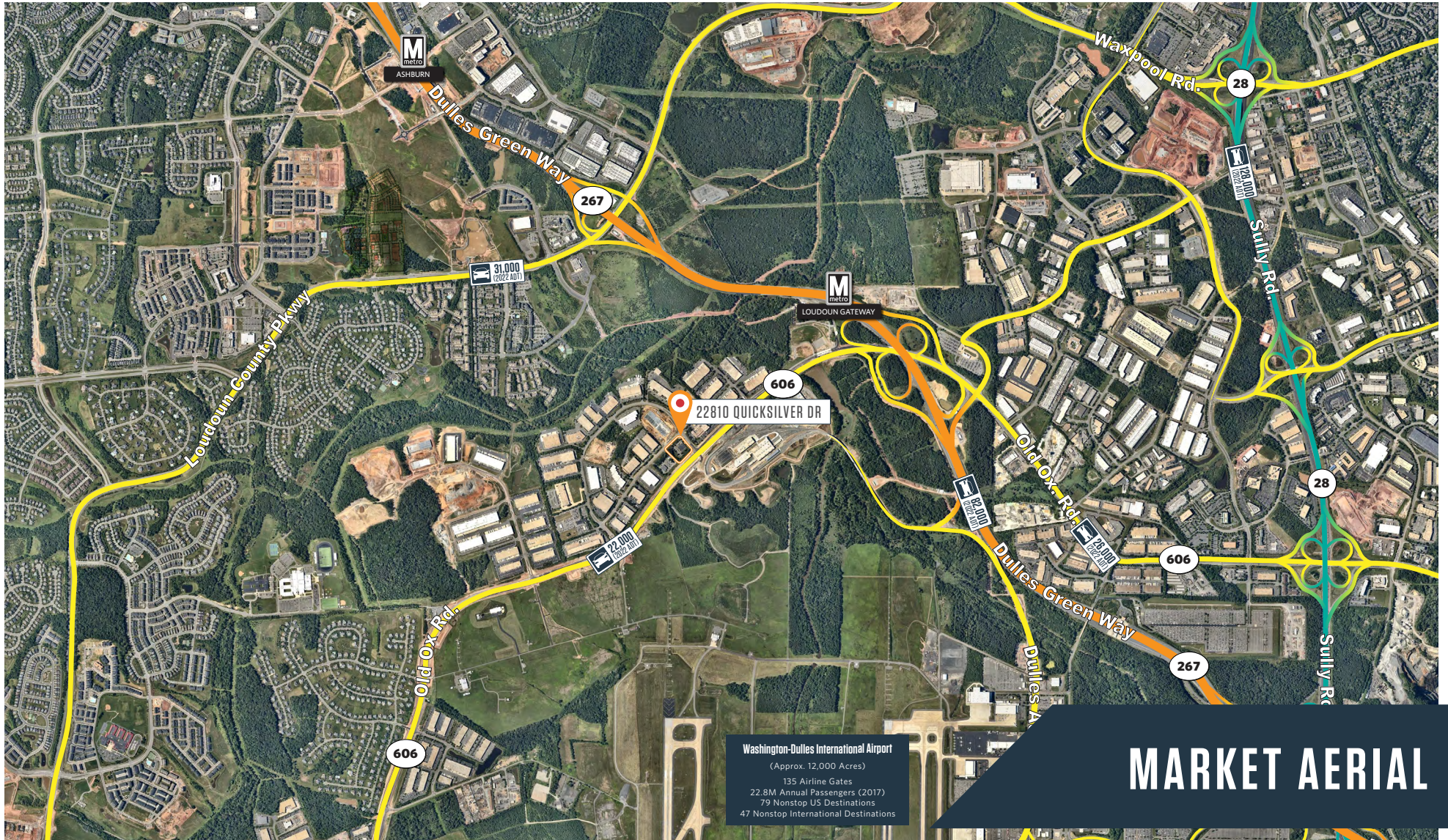
## 22810 QUICKSILVER DR

CHASE STEWART  
cstewart@klnb.com  
703-268-2732

RYAN GOELLER  
rgoeller@klnb.com  
703-268-2731

JEFF TARAE  
jtarae@klnb.com  
703-268-2741

TYLER CUMBERLAND  
tcumberland@klnb.com  
703-268-2720



Washington-Dulles International Airport  
 (Approx. 12,000 Acres)  
 135 Airline Gates  
 22.8M Annual Passengers (2017)  
 79 Nonstop US Destinations  
 47 Nonstop International Destinations

**MARKET AERIAL**

## 22810 QUICKSILVER DR

CHASE STEWART  
 cstewart@klnb.com  
 703-268-2732

RYAN GOELLER  
 rgoeller@klnb.com  
 703-268-2731

JEFF TARAE  
 jtarae@klnb.com  
 703-268-2741

TYLER CUMBERLAND  
 tcumberland@klnb.com  
 703-268-2720



VISIT PROPERTY WEBSITE