



## 2719 Cleveland Ave NW Canton, Ohio 44709

SALE PRICE	\$159,900
TOTAL SQ FT	1,717
PARCEL	243108
ACRES	0.26
YEAR BUILT	1952
ZONING	B3
FRONTAGE/DEPTH	100' / 109'

### Property Features

- Office building for sale in Canton, Ohio
- Located on the corner of Cleveland Ave NW and Ferndale Rd.
- Reception area, three private offices, breakroom, conference room area and two restrooms.
- Roof replaced in 2021.

**Joe Jackson**

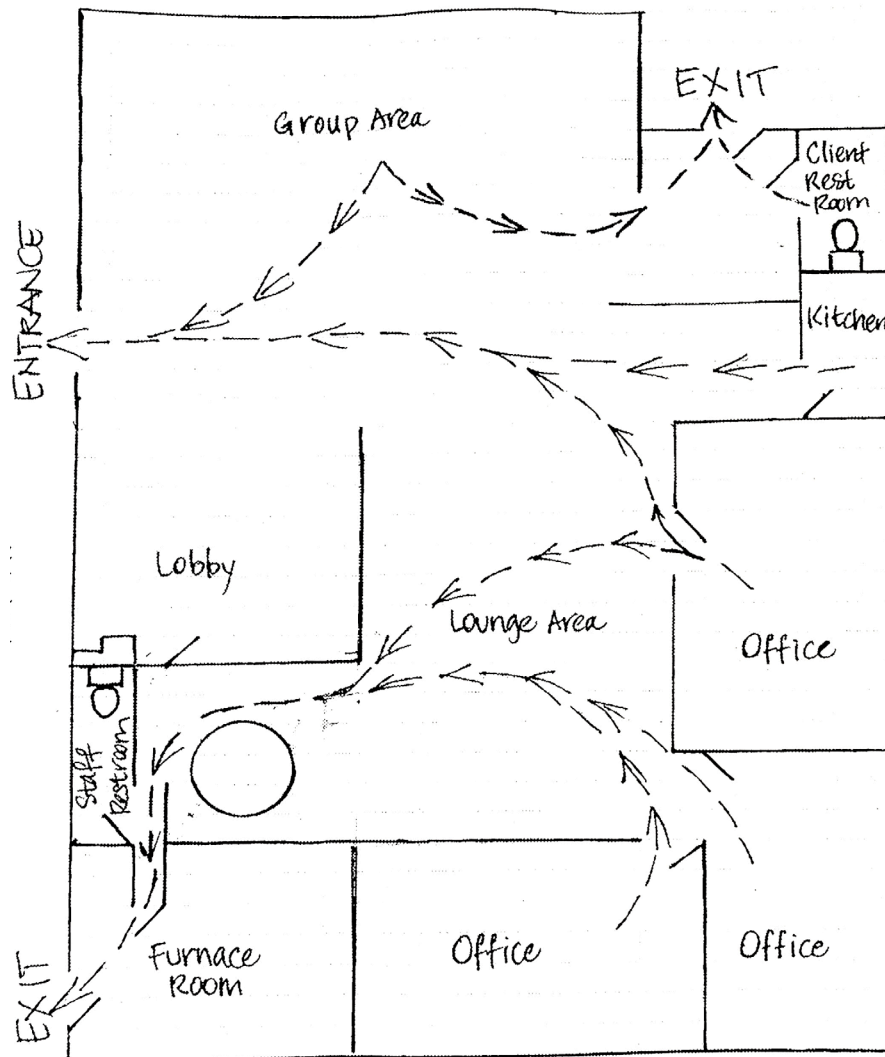
330 933 6349

joe@naispring.com

NO WARRANTY OR REPRESENTATION, EXPRESS OR IMPLIED, IS MADE AS TO THE ACCURACY OF THE INFORMATION CONTAINED HEREIN, AND THE SAME IS SUBMITTED SUBJECT TO ERRORS, OMISSIONS, CHANGE OF PRICE, RENTAL OR OTHER CONDITIONS, PRIOR SALE, LEASE OR FINANCING, OR WITHDRAWAL WITHOUT NOTICE, AND OF ANY SPECIAL LISTING CONDITIONS IMPOSED BY OUR PRINCIPALS NO WARRANTIES OR REPRESENTATIONS ARE MADE AS TO THE CONDITION OF THE PROPERTY OR ANY HAZARDS CONTAINED THEREIN ARE ANY TO BE IMPLIED.

8234 Pittsburg Ave NW  
North Canton, OH 44720  
+1 330 966 8800  
naispring.com





\*DIMENSIONS ARE APPROXIMATE. THIS INFORMATION IS FROM RELIABLE SOURCES BUT IS NOT GUARANTEED AND IS SUBJECT TO CHANGE

NO WARRANTY OR REPRESENTATION, EXPRESS OR IMPLIED, IS MADE AS TO THE ACCURACY OF THE INFORMATION CONTAINED HEREIN, AND THE SAME IS SUBMITTED SUBJECT TO ERRORS, OMISSIONS, CHANGE OF PRICE, RENTAL OR OTHER CONDITIONS, PRIOR SALE, LEASE OR FINANCING, OR WITHDRAWAL WITHOUT NOTICE, AND OF ANY SPECIAL LISTING CONDITIONS IMPOSED BY OUR PRINCIPALS NO WARRANTIES OR REPRESENTATIONS ARE MADE AS TO THE CONDITION OF THE PROPERTY OR ANY HAZARDS CONTAINED THEREIN ARE ANY TO BE IMPLIED.

8234 Pittsburg Ave NW  
North Canton, OH 44720  
+1 330 966 8800  
[naispring.com](http://naispring.com)

