

FOR SALE & LEASE



PROPERTY INFORMATION

ADDRESS	11113 & TBD HWY 20/26 Caldwell, ID
COUNTY	Canyon
ZONING	±1 Acre: C-2 ±3 Acres: MDR
PAD PRICE	Ground Lease Preferred
RESIDENTIAL LAND PRICE	Contact Agent

HIGHLIGHTS

- Prime retail pad available for ground lease with frontage off Chinden Boulevard
- Residential acreage zoned for medium-density residential – allows up to 16 units per acre with density bonus potential
- Located in a rapidly growing area, surrounded by ongoing commercial and residential developments
- Utilities stubbed to site
- Drive-through possible
- Curb cut onto Chinden for direct access
- Incredible traffic counts with new highway improvements

This information, while not guaranteed, is from sources we believe to be reliable. This data is subject to price change, corrections, errors, omissions, prior sale, and/or withdrawal.

BRIAN RALLENS

208.761.0924 | brian@rallensrealty.com

RALLENS REALTY CONSULTANTS | 401 W FRONT STREET, SUITE 307 | BOISE, ID 83702 | 208.996.1055



11113 & TBD HWY 20/26 CALDWELL, ID



BRIAN RALLENS

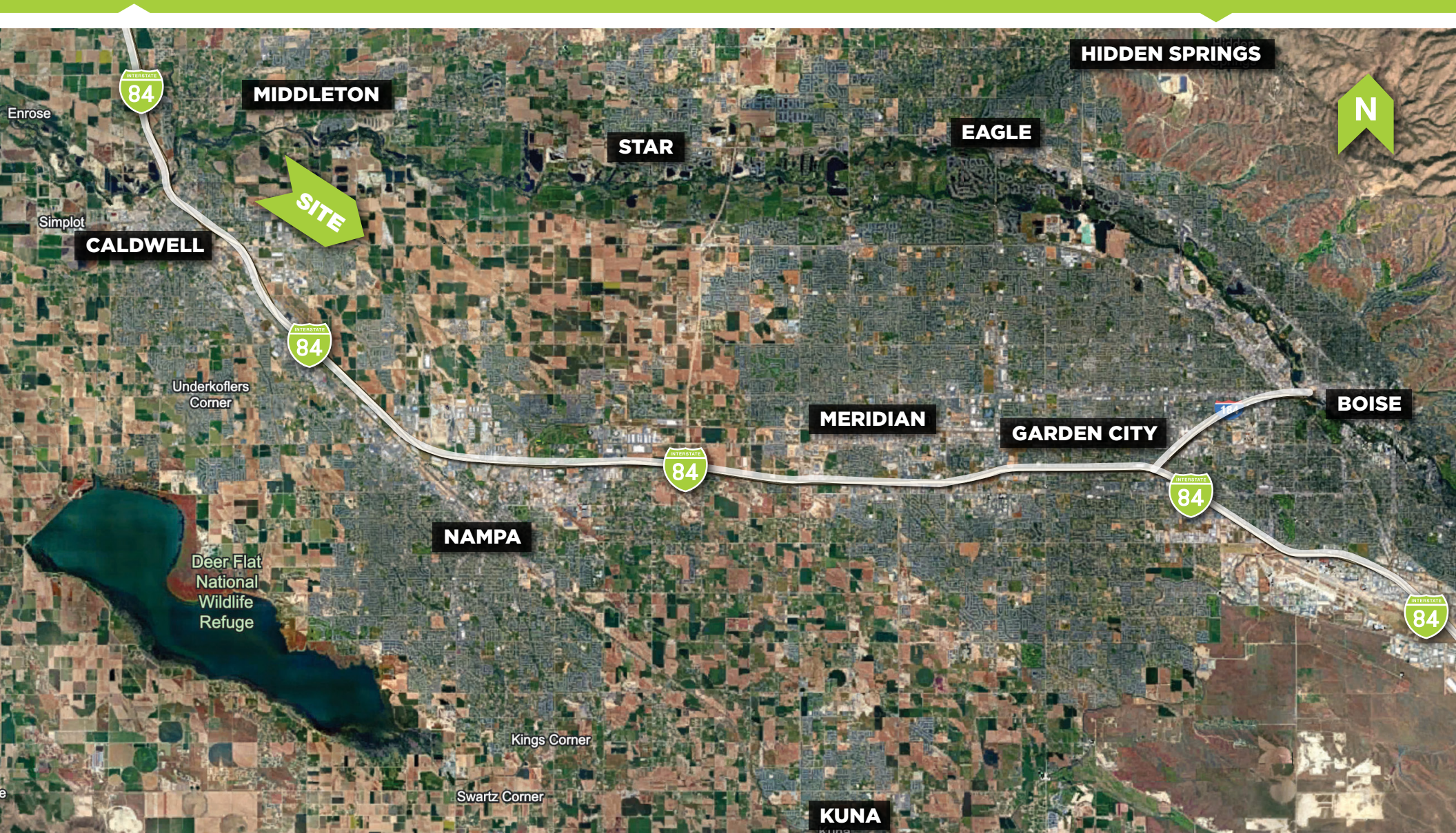
208.761.0924 | brian@rallensrealty.com

RALLENS REALTY CONSULTANTS | 401 W FRONT STREET, SUITE 307 | BOISE, ID 83702 | 208.996.1055



RALLENS REALTY
CONSULTANTS

11113 & TBD HWY 20/26 CALDWELL, ID



BRIAN RALLENS

208.761.0924 | brian@rallensrealty.com

RALLENS REALTY CONSULTANTS | 401 W FRONT STREET, SUITE 307 | BOISE, ID 83702 | 208.996.1055



RALLENS REALTY
CONSULTANTS