

6074 BUSINESS PARK DRIVE
SUITE G



FOR LEASE

FLEX/WAREHOUSE

**6074 Business Park Drive, Suite G
Columbus, GA 31907**

Office/warehouse property strategically located in NE Columbus minutes from JR Allen Parkway and Manchester Expressway interchange. Convenient to dining, services, banking and residential options. Space features a lobby/showroom area, two offices, employee break room and separate conditioned room off of the warehouse. Large roll up door in the back.

Highlights:

- Great NE Columbus location
- Close to Midland Commons, restaurants, and shopping
- Roll Up Door

2,300 sq ft

\$2,040/month
Modifed Gross

Contact Us:



REAL ESTATE SERVICES, LLC
(706) 888-1614



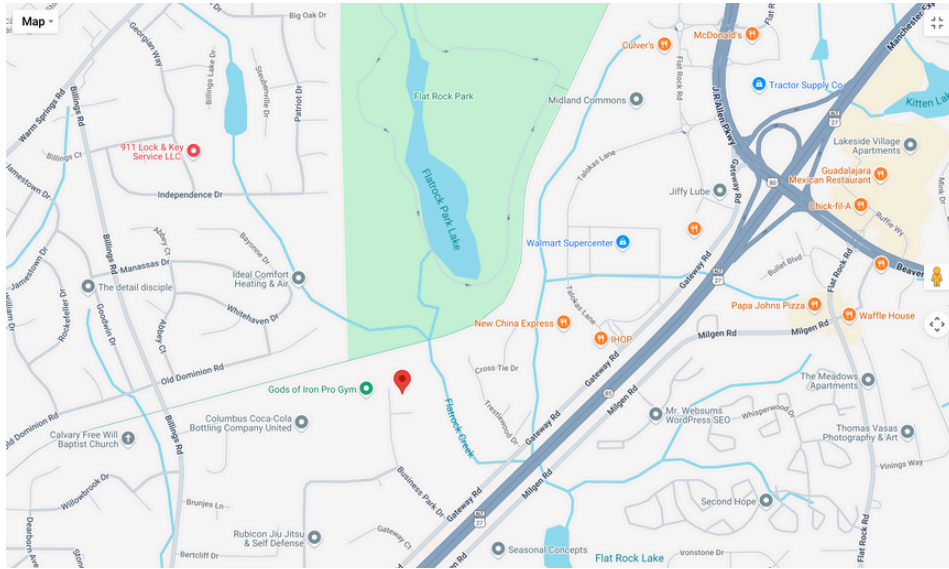
Doug Jefocat
(706) 888-1614
doug@jefcoatre.com



Alissa Neal
(404) 782-4197
alissa@jefcoatre.com



MAP

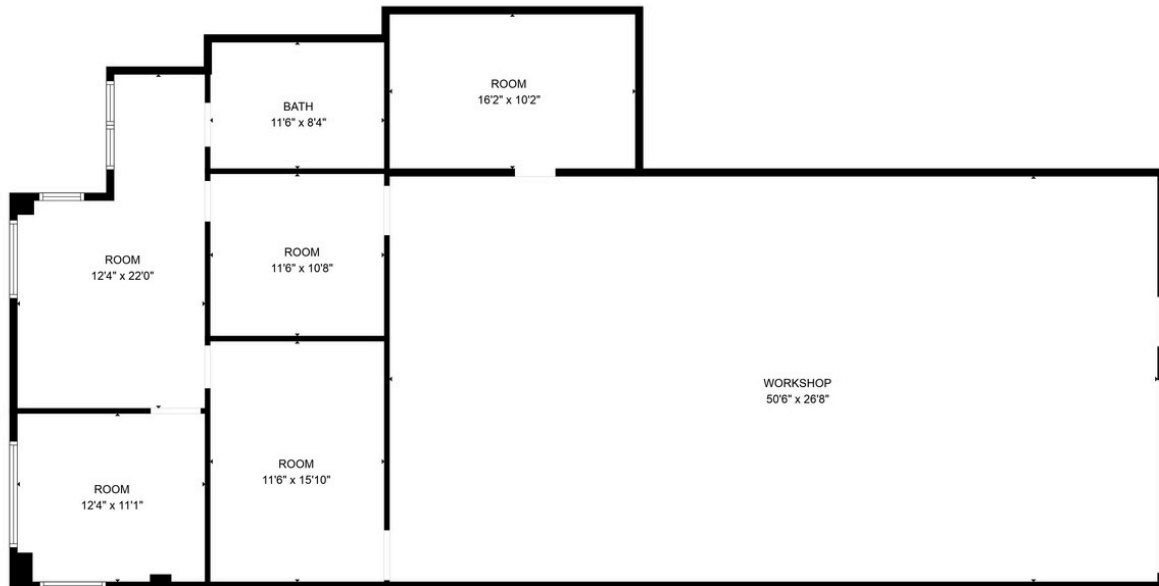


**6074 Business Park
Drive Suite G
Columbus, GA 31907**

Jefcoat
REAL ESTATE SERVICES, LLC

REAL ESTATE SERVICES, LLC
(706) 888-1614

FLOOR PLAN



FLOOR PLAN CREATED BY CUBICASA APP. MEASUREMENTS DEEMED HIGHLY RELIABLE BUT NOT GUARANTEED.