

18500 SCHOOLCRAFT ROAD
DETROIT, MICHIGAN

RETAIL FOR SALE
522 Square Feet Available



**SIGNATURE
ASSOCIATES**
KNOW SIGNATURE | KNOW RESULTS

TURN-KEY ICE CREAM PARLOR



PROPERTY FEATURES

- 522 square feet available
- Turn-key ice cream parlor
- Brand new equipment
- Drive-thru
- B4 Zoning
- Sale Price: \$225,000 (\$431.03/sq.ft.)



For more information, please contact:

JOE STACK
(248) 359 0615
jstack@signatureassociates.com

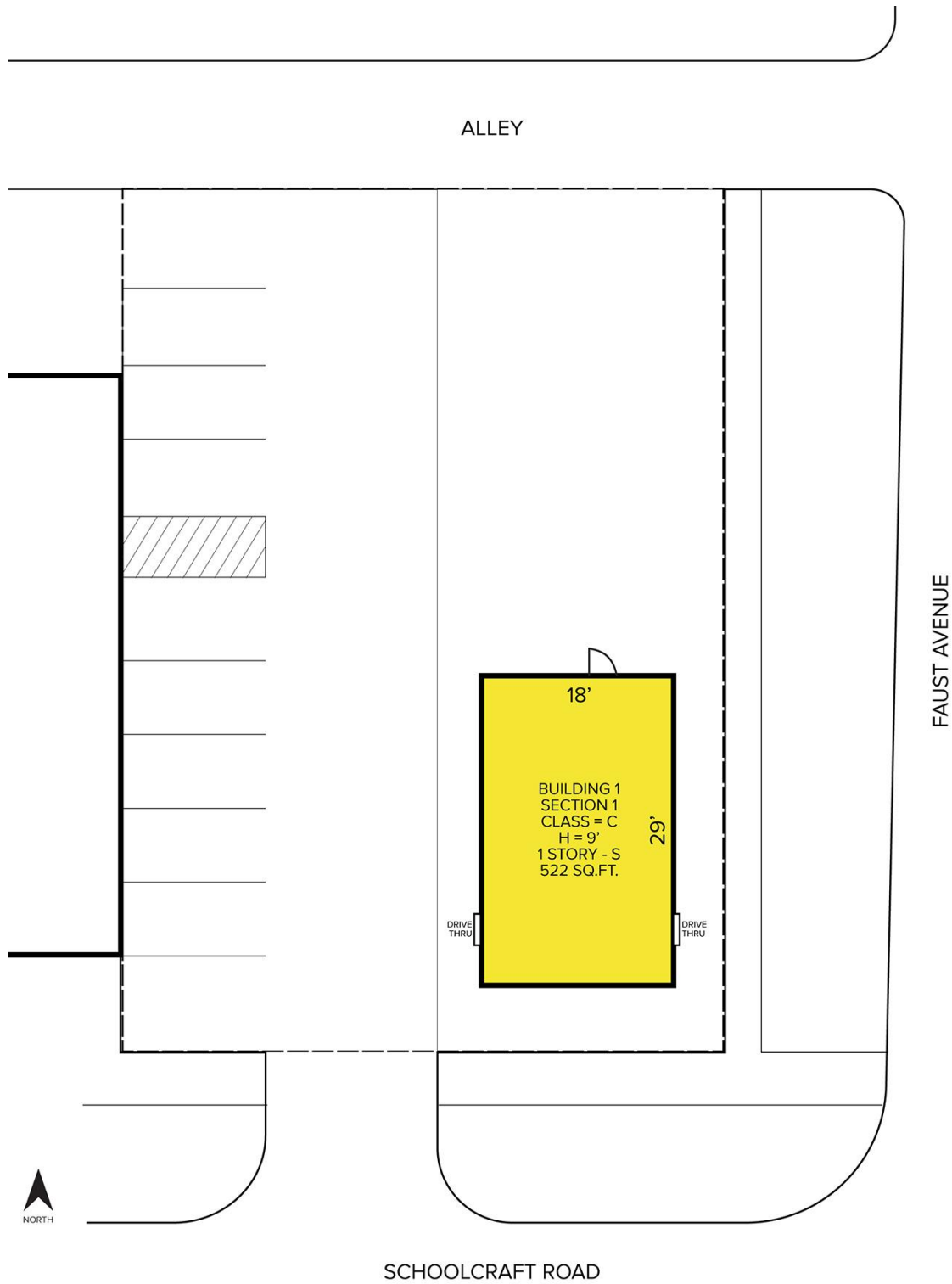
SIGNATURE ASSOCIATES
One Towne Square, Suite 1200
Southfield, MI 48076
www.signatureassociates.com

18500 Schoolcraft Road – Detroit, Michigan

Retail For Sale

522
Square Feet
AVAILABLE

Site Plan



For more information, please contact:

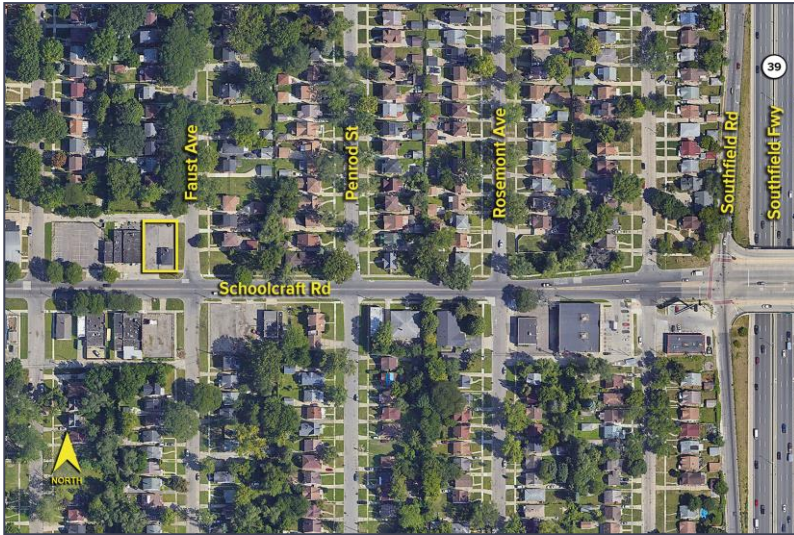
JOE STACK
(248) 359 0615
jstack@signatureassociates.com

SIGNATURE ASSOCIATES
One Towne Square, Suite 1200
Southfield, MI 48076
www.signatureassociates.com

18500 Schoolcraft Road – Detroit, Michigan

Retail For Sale

522
Square Feet
AVAILABLE

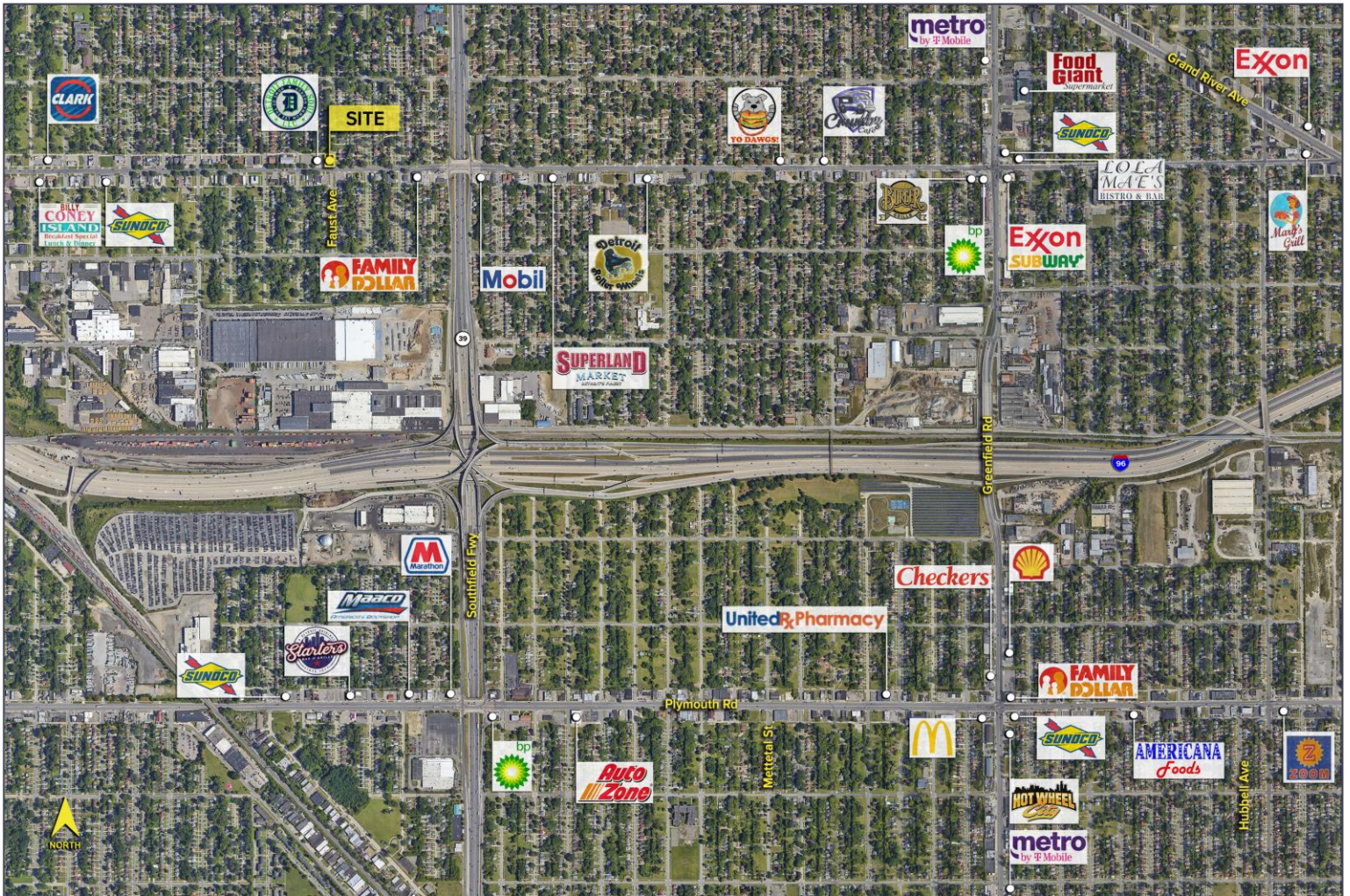


DEMOGRAPHICS

	POPULATION	MED. HH INCOME
1 MILE	14,860	\$56,716
3 MILE	143,548	\$43,891
5 MILE	412,136	\$49,573

TRAFFIC COUNTS

12,168	Schoolcraft Rd. E of Southfield Rd.
13,363	Schoolcraft Rd. W of Southfield Rd.
21,558	Southfield Rd. N of Schoolcraft Rd.
15,222	Southfield Rd. S of Schoolcraft Rd.



For more information, please contact:

JOE STACK
(248) 359 0615
jstack@signatureassociates.com

SIGNATURE ASSOCIATES
One Towne Square, Suite 1200
Southfield, MI 48076
www.signatureassociates.com