

For Sale

1.69± Acres for Development



## Presidential Golf Drive, Parcel B-10

Upper Marlboro, Maryland 20774

### Property Highlights

- Total of 1.69± acres for development
- Zoned CGO, which permits retail, office, multifamily, townhouses and more
- Beechtree has over 1,875 existing homes
- Average household income with one mile is \$236,332
- Population within five miles is 67,686
- Adjacent to the Lake Presidential Golf Club
- Enjoys golf course and lake views
- Close to Route 301 with access to Route 50 and the Capital Beltway (I-495/I-95)
- SALE PRICE: \$300,000



**Jeffrey D. Ludwig**

O: 301 918 2923  
jludwig@naimichael.com

**Barbara Richman Kahn**

O: 301 918 2952  
brichman@naimichael.com

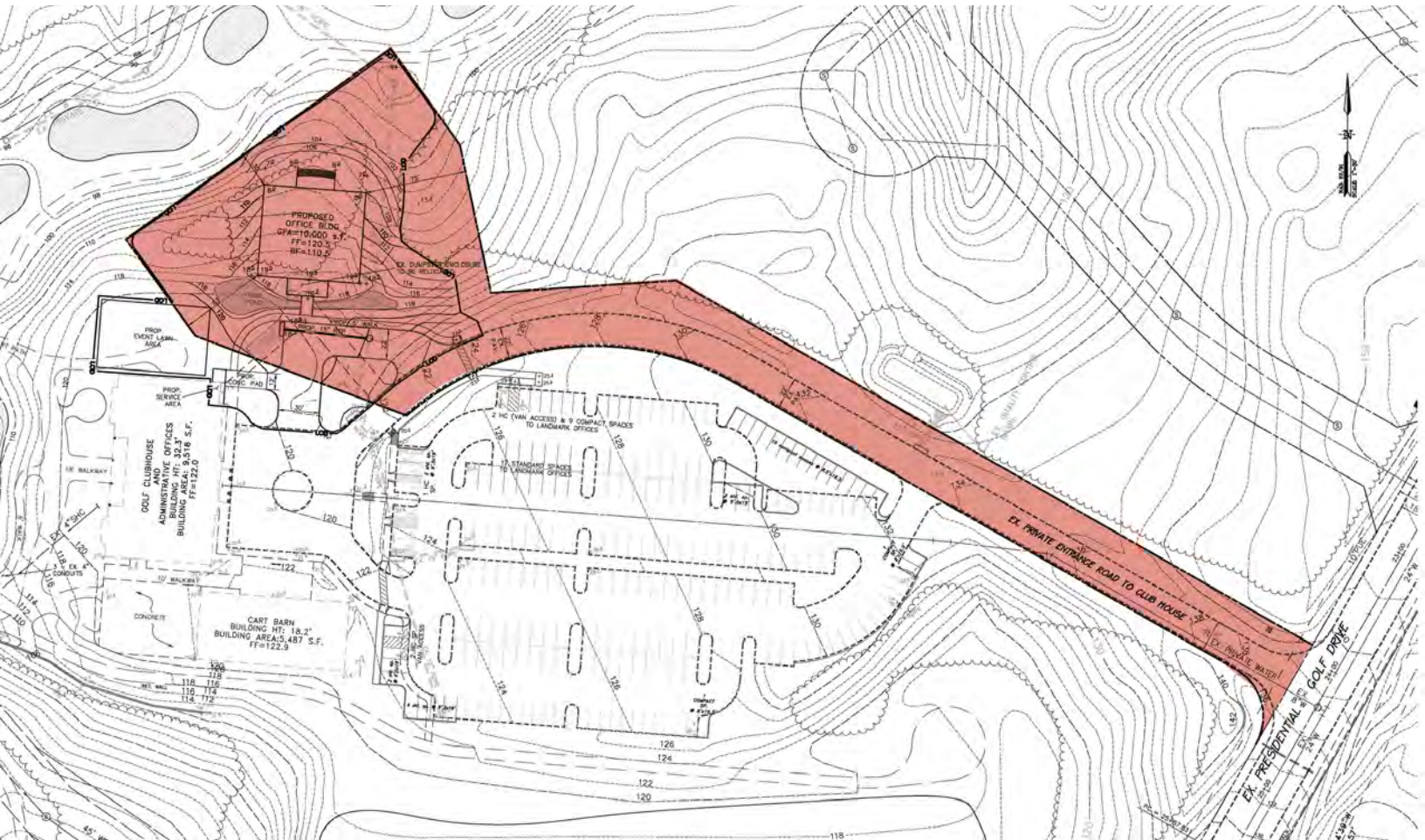
**Jeffrey D.K. Ludwig**

O: 301 918 2924  
kludwig@naimichael.com

**Sally Ludwig**

O: 301 918 2956  
sludwig@naimichael.com

For Sale  
1.69± Acres for Development



For Sale  
1.69± Acres for Development

