

For Lease

# 17355 BOONES FERRY RD

*Fantastic standalone  
building in Lake Oswego!*

LAKE OSWEGO, OR 97035



\*CONCEPTUAL PLAN

KIDDER.COM

 Kidder  
Mathews

17355 BOONES FERRY RD

# *EXTENSIVE* BUILDOUT WITH PERIMETER OFFICES ON THE WINDOWLINE WINDOVLNE

*Exterior Renovations are expected to be completed by Q3 2024*

AVAILABLE SF	First Floor: 2,330 SF Third Floor: 7,700 SF
LEASE RATE	\$32.00/SF, Full Service
TOTAL BUILDING SF	33,574
ON-SITE PARKING RATIO	4.47/1,000 SF
ELEVATORS	Served
RENTAL RATE	\$32.00/SF, Full Service



\*CONCEPTUAL PLAN

AVAILABLE FOR LEASE

KIDDER MATHEWS

# EXTERIOR RENOVATIONS

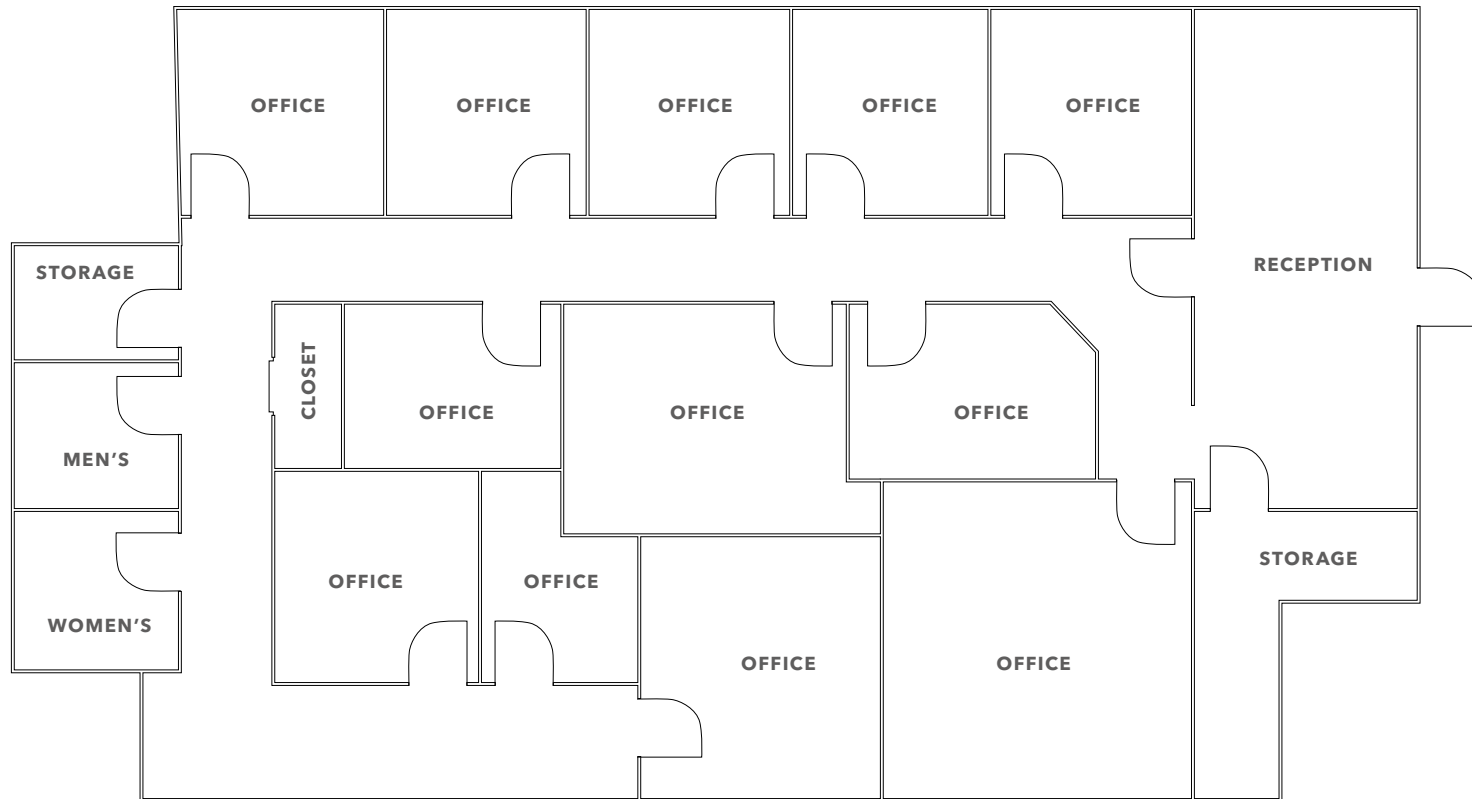




# EXTERIOR RENOVATIONS



# FIRST FLOOR PLAN



*2,330 SF*

AVAILABLE

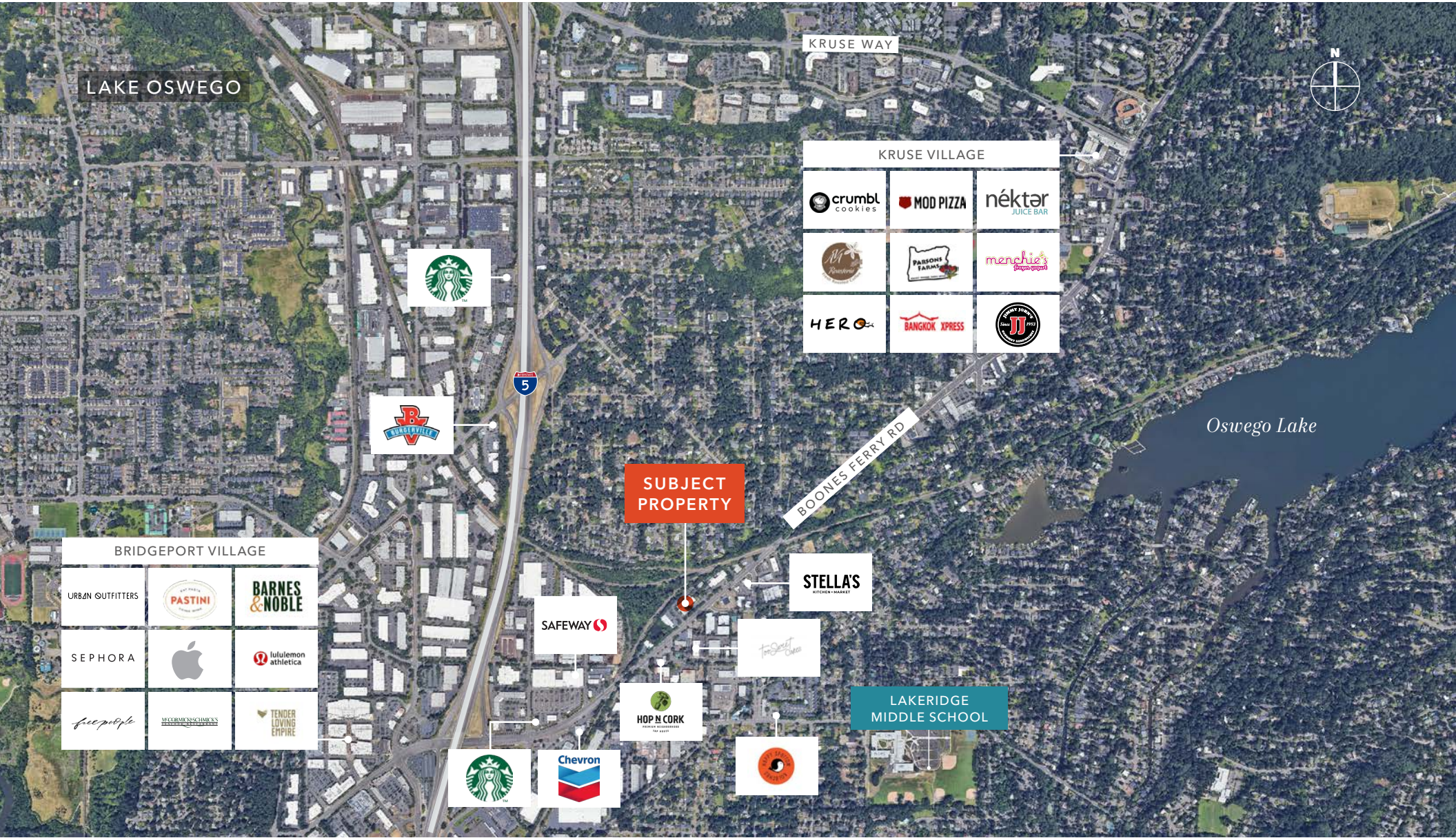
# THIRD FLOOR PLAN



*7,700 SF*

AVAILABLE







17355 BOONES  
FERRY RD

*Exclusively listed by*

ALEXANDRA HENDERSON  
503.830.5431  
alexandra.henderson@kidder.com

KIDDER.COM

This information supplied herein is from sources we deem reliable. It is provided without any representation, warranty, or guarantee, expressed or implied as to its accuracy. Prospective Buyer or Tenant should conduct an independent investigation and verification of all matters deemed to be material, including, but not limited to, statements of income and expenses. Consult your attorney, accountant, or other professional advisor.

 **Kidder  
Mathews**