

11925 Wilshire Boulevard

High End Medical Spec Suites Available



Newly Renovated, Move-in Ready, Class A Opportunity



Property Highlights



Boutique 3-story Medical building in Brentwood



Large 2nd floor outdoor terrace with BBQ



Four large balconies on the 3rd floor



Prominent signage on Wilshire Boulevard



Covered and secured on-site parking



Easy access to 405 freeway, West L.A. and Santa Monica



100% Move-In Ready

- Inquire for Pricing
- Parking: 3.25/1,000
\$150/unreserved space
\$250/reserved space



11925
Wilshire Boulevard



Common Areas



Medical Reception



Corridor



2nd Floor Medical or
Office Leasing Opportunity





Second Floor
14,377 RSF

Available Spaces

Second Floor

Description:

Full floor or multi-tenant medical or office opportunity with large private terrace

Rentable Square Feet:

Approx. 2,500 RSF – 14,377 RSF



Click for
Virtual Tour



Click for
Floor Plan



Click for
Photography

Third Floor

Suite C - 2,050 RSF

Medical spec suite in progress featuring high end finishes and unique private balcony. Reception/waiting area with check-in & checkout area, 5 exam rooms, doctors office, kitchen, storage, private restroom.

Suite D - 2,520 RSF

Medical spec suite in progress featuring high end finishes and unique private balcony. Reception/waiting area with check-in & checkout area, 6 exam rooms, doctors office, kitchen, storage, private restroom.

Suite E - 3,178 RSF

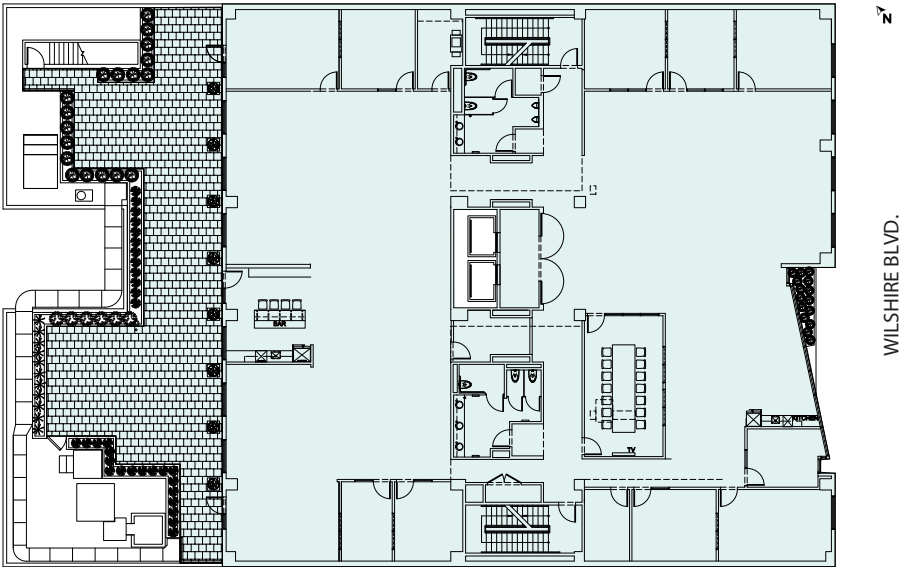
Medical spec suite in progress featuring high end finishes and unique private balcony. Reception/waiting area with check-in & checkout area, 7 exam rooms, doctors office, kitchen, storage, private restroom.



Click for
Floor Plan

Floor Plan

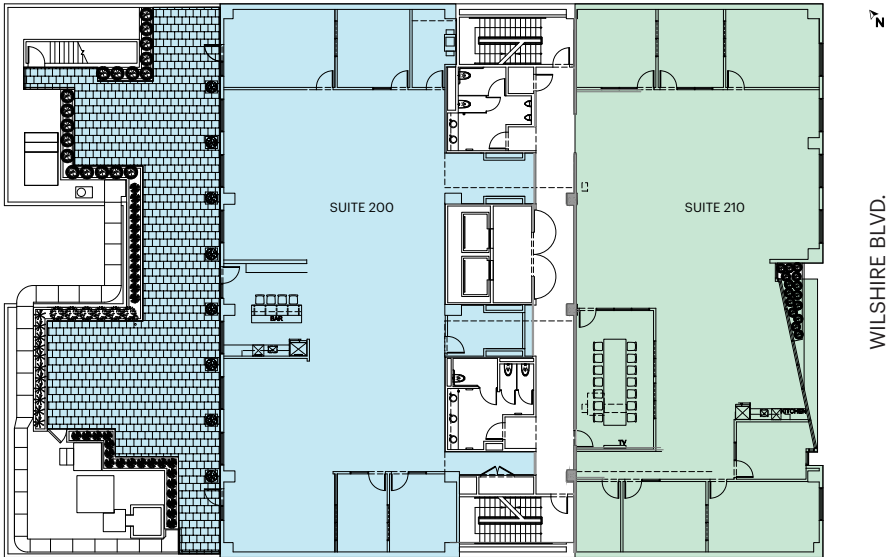
Click to return to [Available Spaces](#)



Current Full Floor Plan

14,377 RSF

Office Terrace



Hypothetical Multi-Tenant Plan

Suite 200: 8,817 RSF

Suite 210: Approx. 2,500 RSF - 5,560 RSF

Second Floor
14,377 RSF

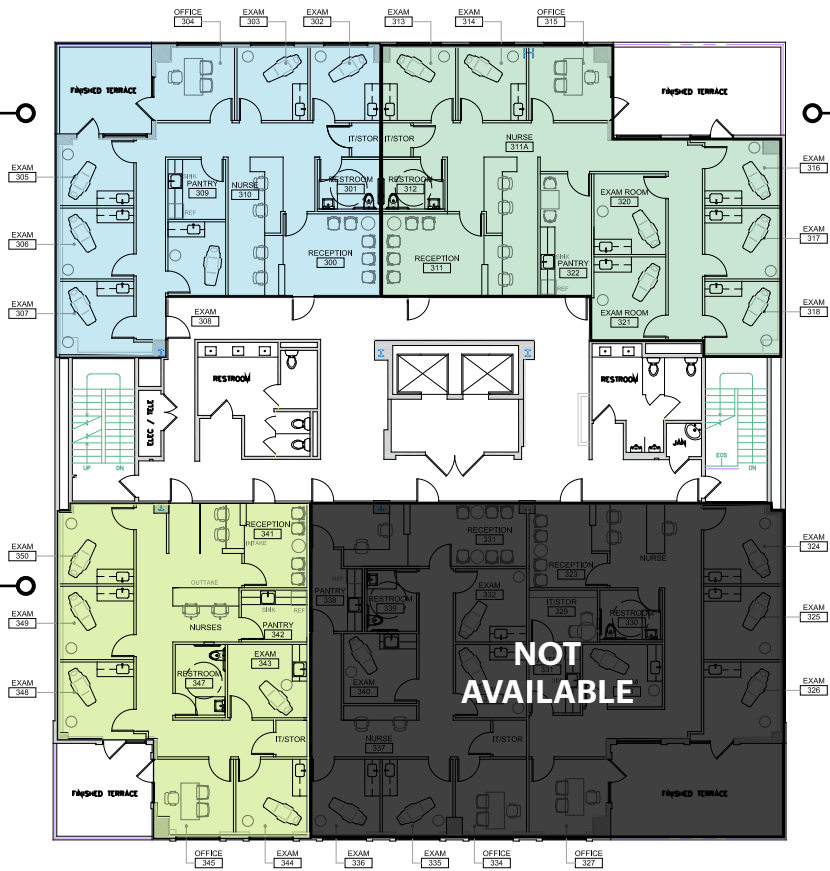
Floor Plan

Click to return to [Available Spaces](#)



 **Suite D**
2,520 RSF

 **Suite E**
3,178 RSF

 **Suite C**
2,050 RSF





-  Restaurant
-  Retail
-  Gyms
-  Hotel

Neighbor Amenities

11925 Wilshire Boulevard is embedded into the heart of the Westside. Located minutes from Santa Monica, Westwood, Century City and Beverly Hills — nearby neighbors include NA LCS Studio, Riot Games, Hulu, Oracle, Snapchat, Bird, Starz, Lionsgate and Skydance Media. An abundance of amenities lie within a mile-distance.



11925 Wilshire Boulevard
Brentwood, Los Angeles CA



Get in Contact

Ben Silver

+1 310 595 3840

ben.silver@jll.com

License # 01818061

Greg Astor

+1 818 317 4477

greg.astor@jll.com

License # 0202177

Although information has been obtained from sources deemed reliable, neither Owner nor JLL makes any guarantees, warranties or representations, express or implied, as to the completeness or accuracy as to the information contained herein. Any projections, opinions, assumptions or estimates used are for example only. There may be differences between projected and actual results, and those differences may be material. The Property may be withdrawn without notice. Neither Owner nor JLL accepts any liability for any loss or damage suffered by any party resulting from reliance on this information. If the recipient of this information has signed a confidentiality agreement regarding this matter, this information is subject to the terms of that agreement. ©2023. Jones Lang LaSalle IP, Inc. All rights reserved.