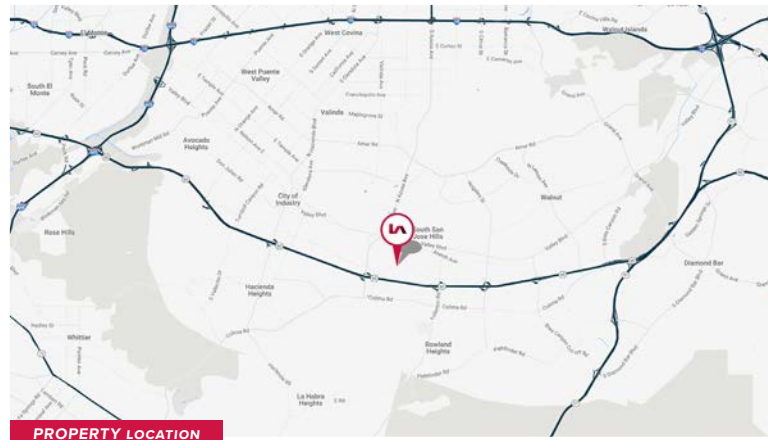


FOR LEASE
±32,750 SF INDUSTRIAL BUILDING
CLASS A UNIT



Property Highlights

- Within The Popular Shoe Row in Central Industry
- ±11,664 Sq. Ft. Office | Two Story Office
- Two (2) Dock-High Positions
- Two (2) Ground-Level Doors
- 26' Clear Height
- Easy Access to CA-60 Via Azusa Ave and/or Fullerton Rd.
- Gated and Secured Lot | 55 Parking Spaces
- Power: 1,000 Amps | Volts: 277-480 | Phase: 3 | Wire: 4



For more information please Contact:



Kevin Ching, SIOR
Vice President | Lic ID # 01899995
P 626.701.2405
E kching@lee-associates.com

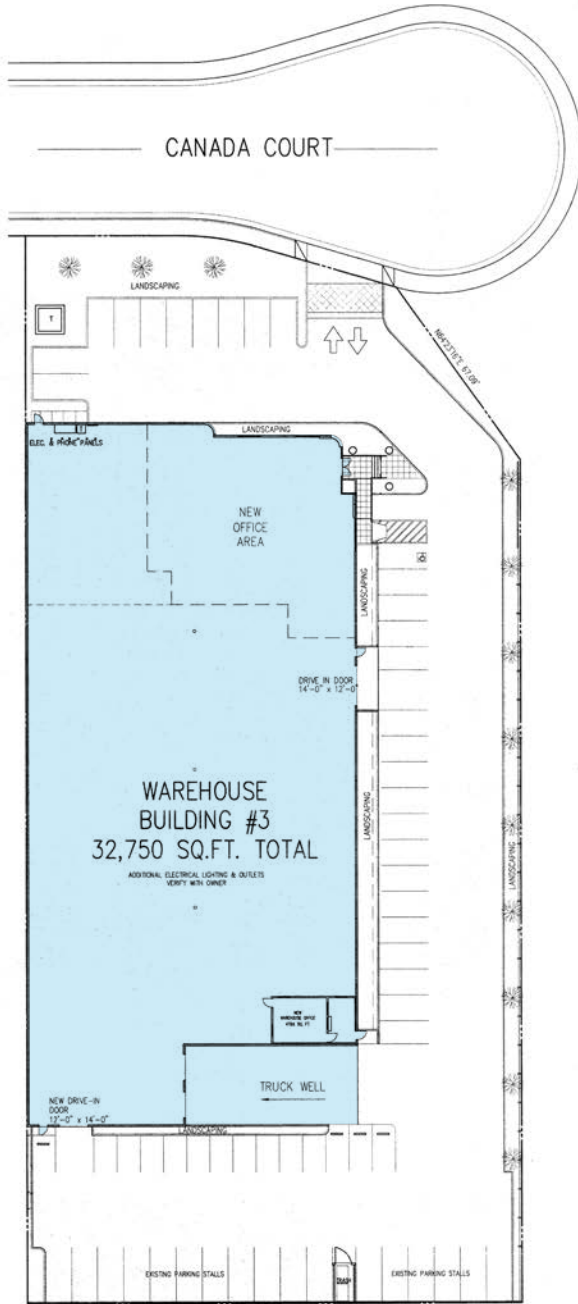


Justin Chiang
Vice President | Lic ID # 01903437
P 626.701.2401
E jchiang@lee-associates.com

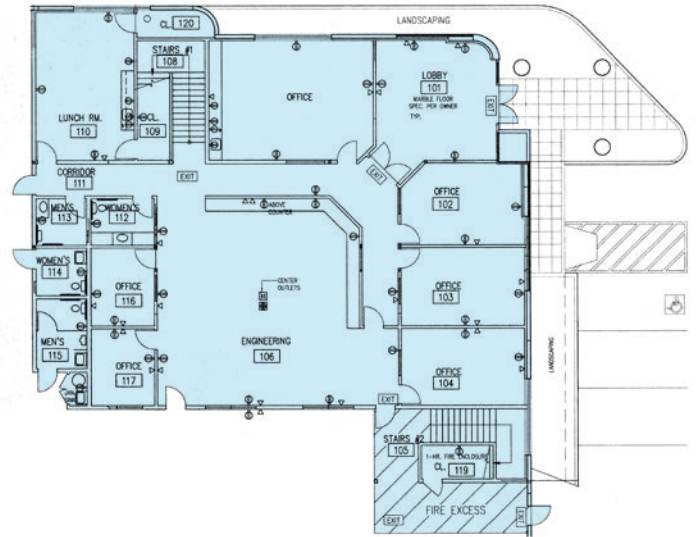
908 Canada Court City of Industry, CA 91748

Property Site Plan

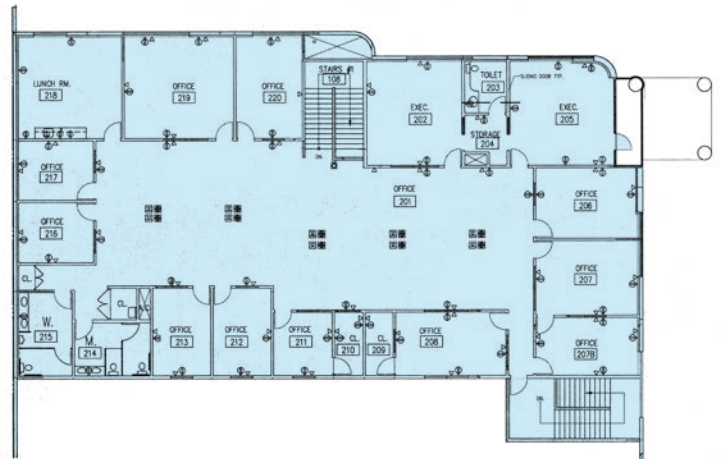
Not To Scale/ Not Exact



First Floor Office Plan



Second Floor Office Plan



For more information please Contact:



Kevin Ching, SIOR
Vice President | Lic ID # 01899995
P 626.701.2405
E kching@lee-associates.com



Justin Chiang
Vice President | Lic ID # 01903437
P 626.701.2401
E jchiang@lee-associates.com