

For Lease

1317 Douglas Street
Victoria, BC

**AVISON
YOUNG**



High Profile Retail Space on Douglas Street Corridor

- ✓ Prime location on Douglas Street, Victoria's primary traffic arterial
- ✓ Improved as a fully functioning hair salon, with bonus mezzanine
- ✓ Proximity to a variety of local and national businesses
- ✓ Easily accessible via foot, bike, and bus

Contact Us

James Murray
Personal Real Estate Corporation
Vice President
250.382.3400
james.murray@avisonyoung.com

Nathaniel Simpson
Vice President
250.382.3400
nathaniel.simpson@avisonyoung.com

Stewart Harney
Associate
250.382.3400
stewart.harney@avisonyoung.com

1317 Douglas St Victoria, BC

SIZE

1,472 SF

AVAILABLE

Immediately

NET RENT

\$22.50 per SF

ADDITIONAL RENT

\$15.00 per SF (2026 est.)

ZONING

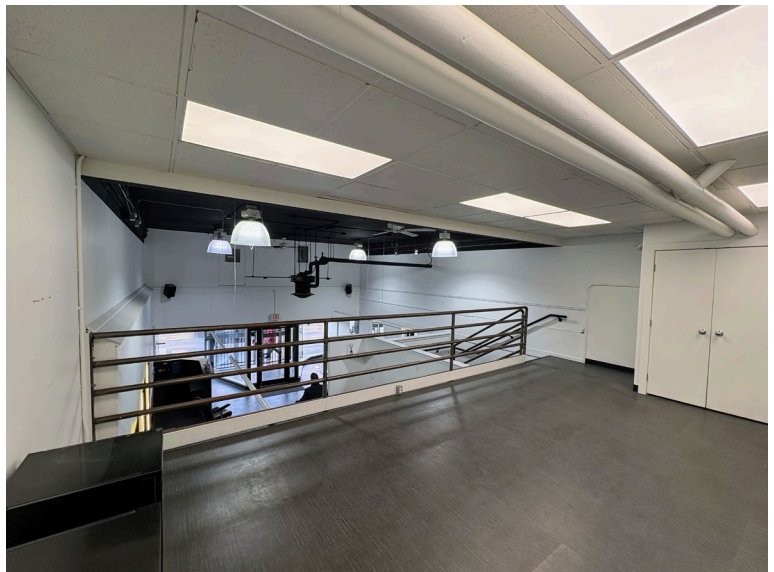
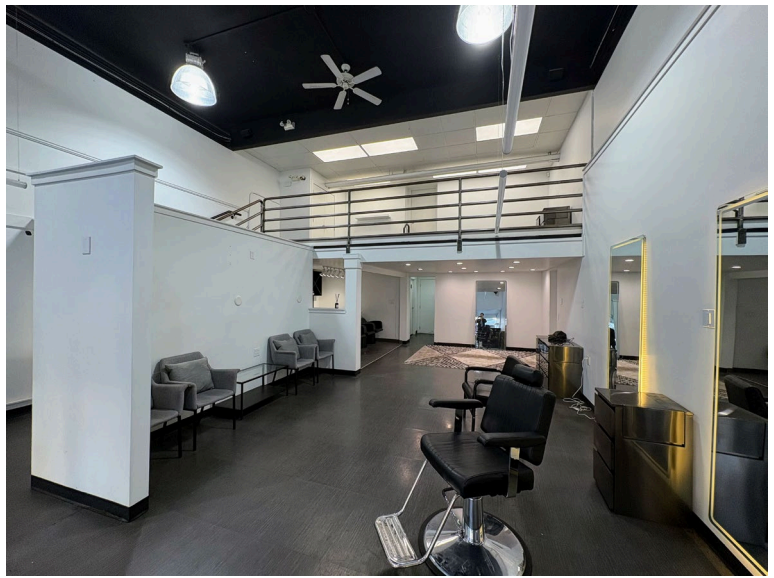
CBD-1 Central Business District

OPPORTUNITY

Lease move-in-ready salon space in the heart of Downtown Victoria. The subject premises benefits from impressive ceiling heights, quality improvements, and an easily accessible location along Victoria's primary transit artery, Douglas St.

Consisting of an open-concept area on the street level, plus mezzanine office/storage space above, this space lends itself to a wide variety of commercial businesses within the long list of permitted uses in the CBD-1 zoning.

**AVISON
YOUNG**





Neighbourhood Amenities



Food & Beverage

- Hope Key
- Burger King
- Subway
- Second Slice Pizza
- La Fagota Mexicana
- Sizzling Tandoor
- The Mint
- Local Pizza
- The Vicious Poodle
- The Palms
- John's Place
- RUDI
- and more!

Retail & Service

- 7-Eleven
- Mexican House of Spices
- Second Degree Vintage
- Scotiabank
- BMO Bank of Montreal
- Bulk Barn
- Dollarama
- Vancity
- Annex Fitness
- Giant Bikes
- Crag X Climbing Centre
- WIN Resale Shop
- and more!



Contact Us

James Murray
Personal Real Estate Corporation
 Vice President
 250.382.3400
james.murray@avisonyoung.com

Nathaniel Simpson
 Vice President
 250.382.3400
nathaniel.simpson@avisonyoung.com

Stewart Harney
 Associate
 250.382.3400
stewart.harney@avisonyoung.com