



PRELIMINARY DESIGN, RENDERERS ARE NOT TO SCALE, FOR ILLUSTRATION PURPOSES ONLY

## PRE-LEASING CLIFFDALE SHOPPING CENTER

### LEASE OVERVIEW

**LEASE PRICE | \$30 PER SF**

**TENANT ALLOWANCE | \$30 PER SF**

**LEASE TYPE | NNN**

**SQUARE FEET | 1,625 TO 4,875 SF**

**ESTIMATED COMPLETION | Q4 2026**

**ZONING | LIMITED COMMERCIAL**

This future shopping center will feature two buildings: Building 1 with five units and Building 2 with three units, each unit providing approximately 1,625 +/- square feet of space. Conveniently situated on Cliffdale Road and just moments from Skibo Road, Fayetteville's primary retail corridor, this location guarantees visibility to the approximately 31,500 vehicles passing by each day. With an estimated completion in the last quarter of 2026, tenants will benefit from a \$30 per square foot tenant improvement allowance. Seize the opportunity to secure your space in this promising retail spot—contact us today to explore pre-leasing opportunities!

**GEORGE MANLEY**  
NC BROKER  
C: 910.603.8395  
GEORGE@CSGNC.COM

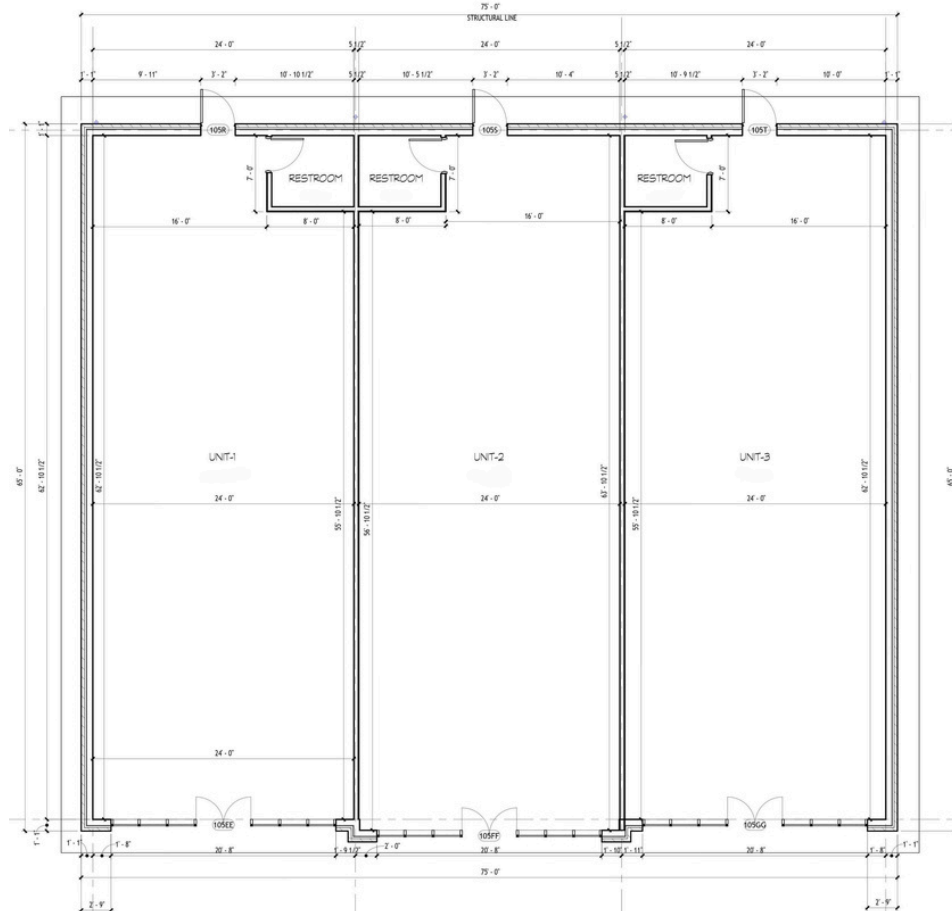
**CAROLINA SUMMIT GROUP**  
390 SW Broad Street, Suite B  
Southern Pines, NC 28387  
910.684.5353  
carolinasummitgroup.com

**HOLLY BELL**  
NC BROKER  
C: 910.690.1065  
HOLLY@CSGNC.COM

[illegible]

The information contained herein has been obtained through sources deemed reliable but cannot be guaranteed as to its accuracy.  
Any information of special interest should be obtained through independent verification.

## PRELIMINARY FLOOR PLANS | BUILDING 2



NOTE: Preliminary Floor Plans are for illustrative purposes only.  
 Actual dimensions & details may vary.

**GEORGE MANLEY**  
 NC BROKER  
 C: 910.603.8395  
 GEORGE@CSGNC.COM

**CAROLINA SUMMIT GROUP**  
 390 SW Broad Street, Suite B  
 Southern Pines, NC 28387  
 910.684.5353  
 carolinasummitgroup.com

**HOLLY BELL**  
 NC BROKER  
 C: 910.690.1065  
 HOLLY@CSGNC.COM



## RETAIL MAP



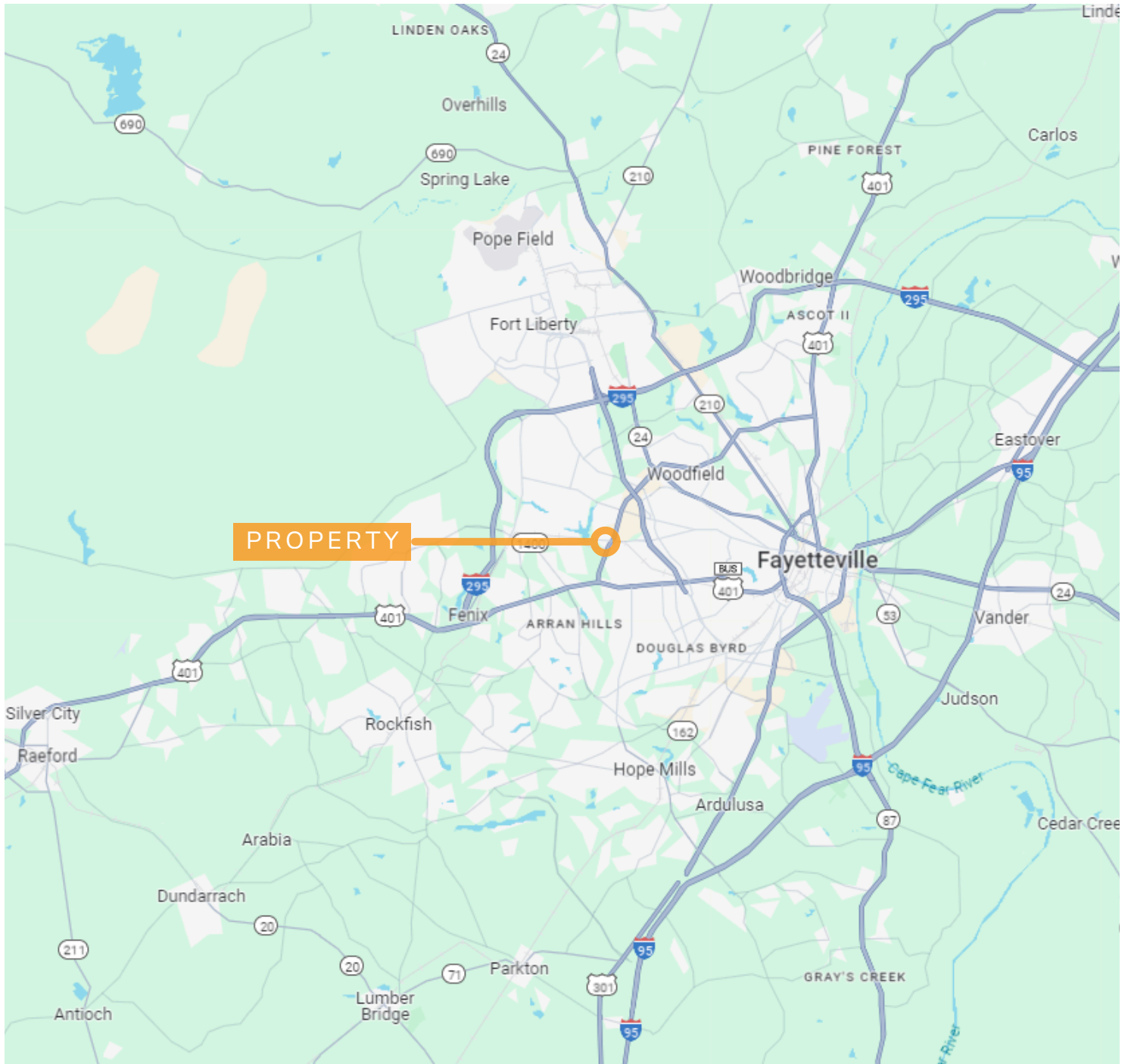
**GEORGE MANLEY**  
 NC BROKER  
 C: 910.603.8395  
[GEORGE@CSGNC.COM](mailto:GEORGE@CSGNC.COM)

**CAROLINA SUMMIT GROUP**  
 390 SW Broad Street, Suite B  
 Southern Pines, NC 28387  
 910.684.5353  
[carolinasummitgroup.com](http://carolinasummitgroup.com)

**HOLLY BELL**  
 NC BROKER  
 C: 910.690.1065  
[HOLLY@CSGNC.COM](mailto:HOLLY@CSGNC.COM)



## LOCATION MAP



**GEORGE MANLEY**  
NC BROKER  
C: 910.603.8395  
GEORGE@CSGNC.COM

**CAROLINA SUMMIT GROUP**  
390 SW Broad Street, Suite B  
Southern Pines, NC 28387  
910.684.5353  
carolinasummitgroup.com

**HOLLY BELL**  
NC BROKER  
C: 910.690.1065  
HOLLY@CSGNC.COM