

HWY 19E RETAIL/OFFICE CONDO

1201 Highway 19E
Elizabethton, TN 37643

Location

At the intersection of Hwy 19E and Pete Hampton Drive in southeast Elizabethton

Available for Sale

Suite 3: 825 SF office/retail
\$179,000

Suite 7: 800 SF office/retail
\$179,000

Highlights

Signage on building and pylon sign

Spacious parking lot with ingress/egress on Hwy 19E and Peter Hampton Drive

Median cut allows access from both directions of Hwy 19E

Approx. 0.5 miles from Tennessee Technology Center and East Side Elementary School

Traffic Counts

Hwy 19E: 20,136 (2022)

Demographics

(2024 Est.)	3 mile	5 mile	10 mile
Population	21,209	33,189	105,726
Median HH Income	\$51,868	\$53,644	\$53,674
Median Age	44.9	45.5	41.0

Contact

Shannon K. Castillo

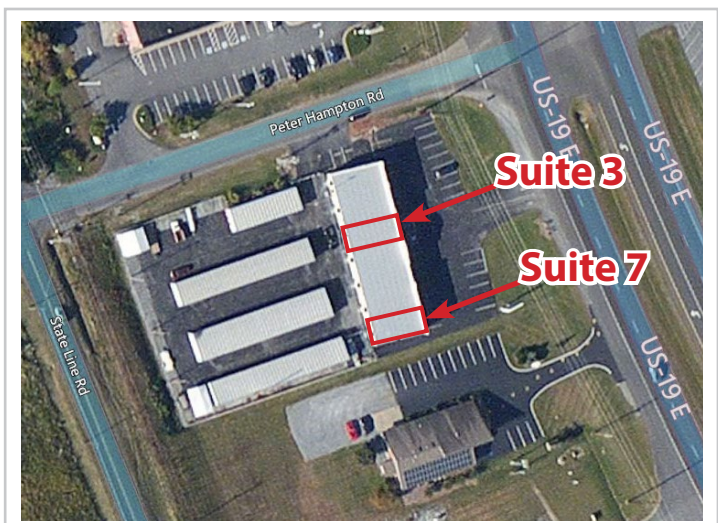
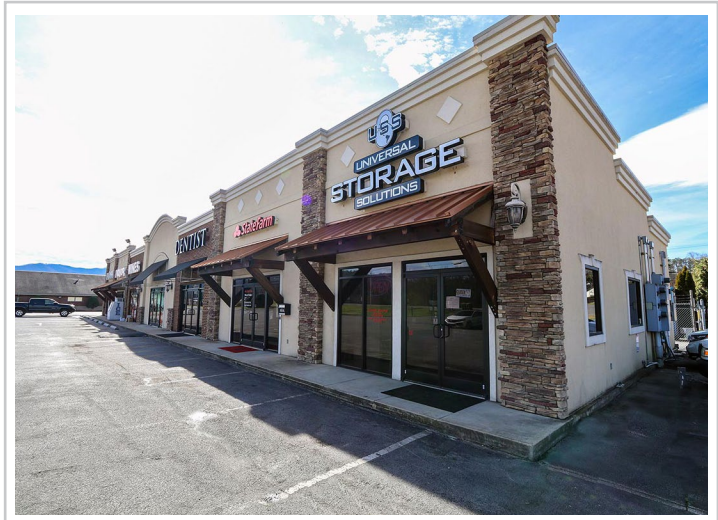
Affiliate Broker

shannon@mitchcox.com

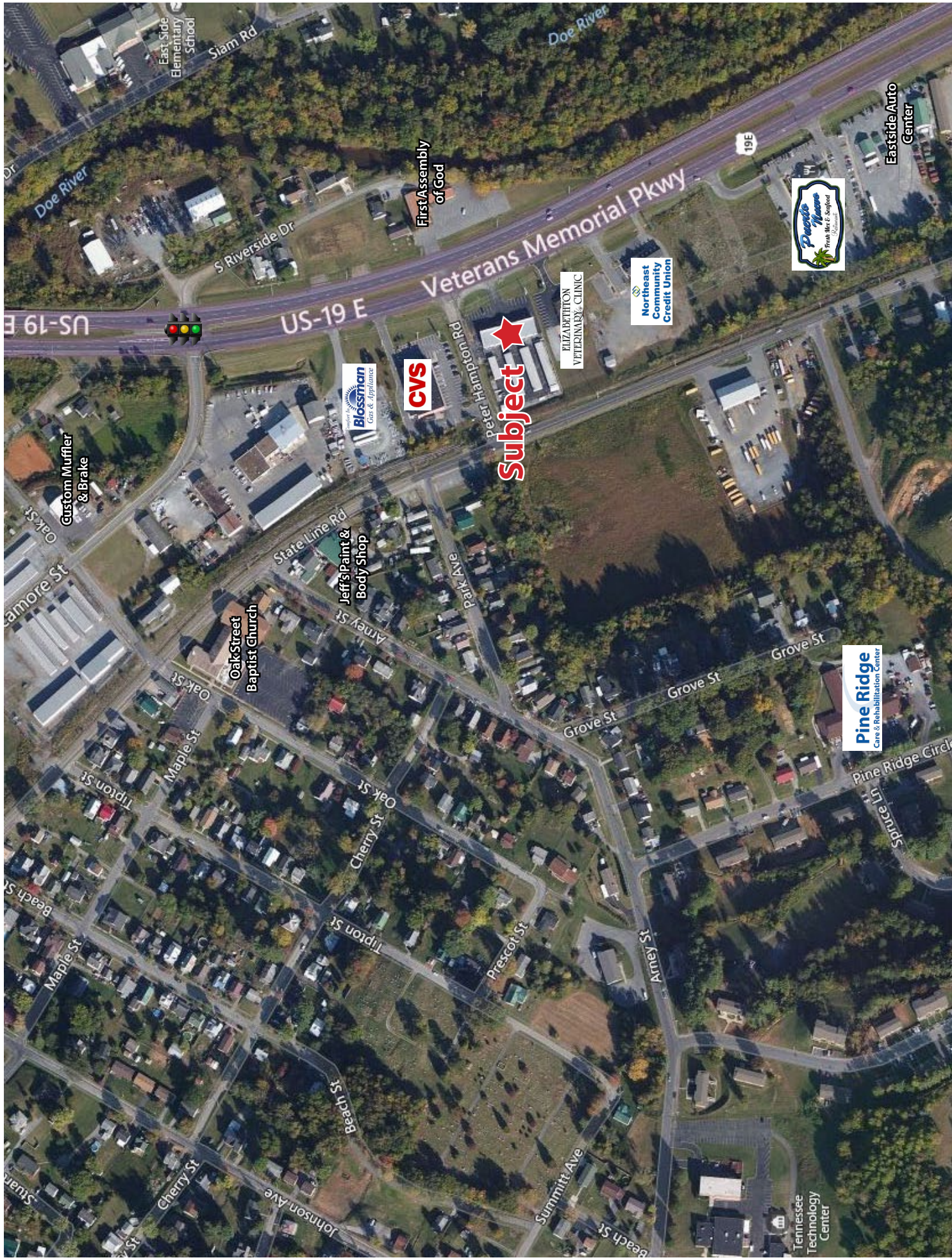
📞 423-282-6582 | 📠 423-282-5903

www.mitchcox.com

Owner/Agent



MITCH COX
REALTOR, INC.



East Side Elementary School

Siam Rd

Doe River

First Assembly of God

S Riverside Dr

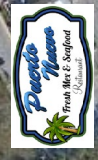
US-19 E

US-19 E

Veterans Memorial Pkwy

19E

Eastside Auto Center



ELIZABETHON VETERINARY CLINIC



Subject

Hargett Hampton Rd

Custom Muffler & Brake

Camore St

State Line Rd

Jeff's Paint & Body Shop

Oak Street Baptist Church

Park Ave

Arney St

Grove St

Grove St



Pine Ridge Circle

Space Ln

Tennessee Technology Center

Summitt Ave

Arney St

Prexcor St

Tipton St

Cherry St

Oak St

Tipton St

Maple St

Maple St

Beach St

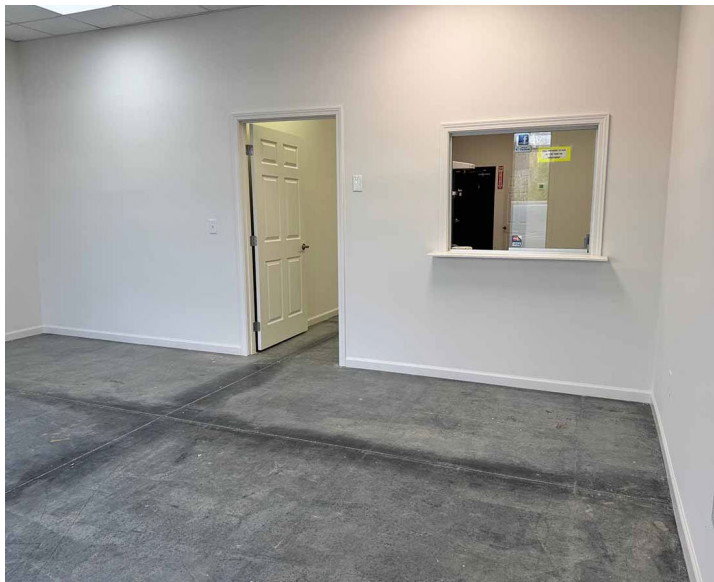
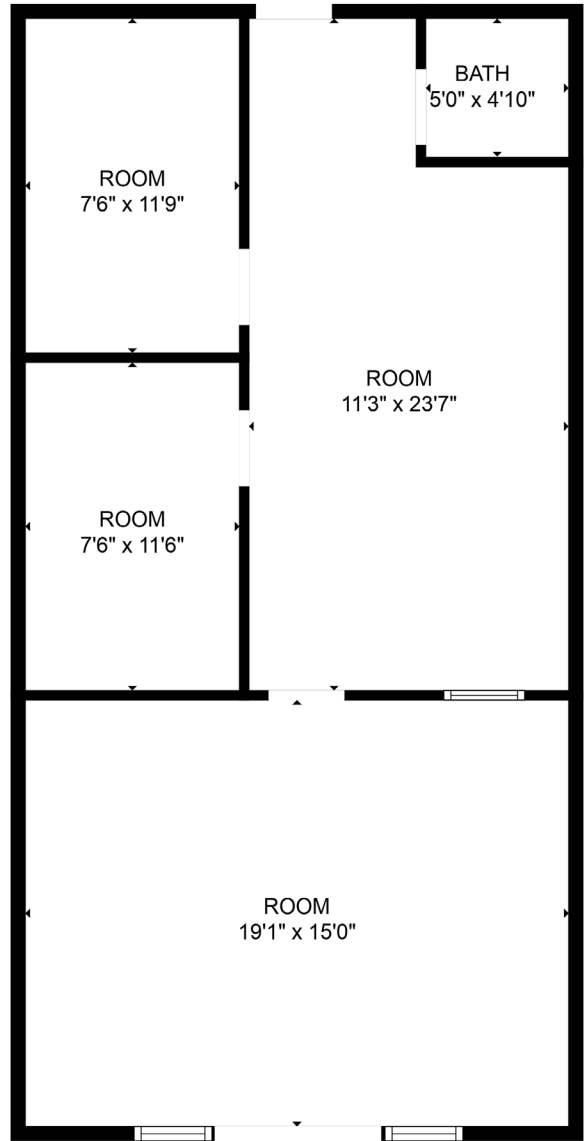
Stuart St

Cherry St

Johnson Ave

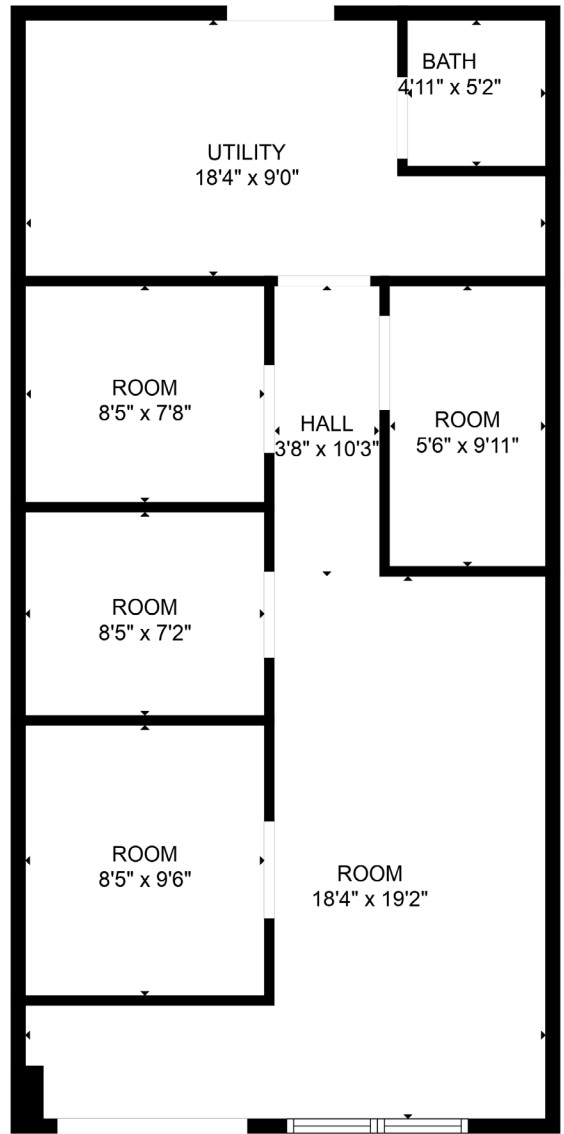


Suite 3: 825 SF office/retail





Suite 7: 800 SF office/retail



MITCH COX
REALTOR, INC.

2304 Silverdale Drive, Suite 200, Johnson City, TN 37601
423-282-6582 (o) 423-282-5903 (f) www.mitchcox.com