

FOR SALE

3001 Century Dr | Rowlett, TX 75088



±4,636 SF | OFFICE/WAREHOUSE

AVAILABILITY HIGHLIGHTS

BUILDING SIZE:	4,636 SF
OFFICE:	±4,250 SF
WAREHOUSE:	±386 SF (expandable)
YEAR BUILT:	1984
LAND:	0.35 Acres
ZONING:	Click for zoning information
LOADING:	1 Grade level door
PARKING RATIO:	±7/1,000 SF
HVAC:	100% HVAC. Brand new units
NOTES:	Fiber internet Tenant in place but lease can be terminated early.



FOR MORE INFORMATION:

BRETT LEWIS, SIOR
972.934.4018
blewis@lee-associates.com

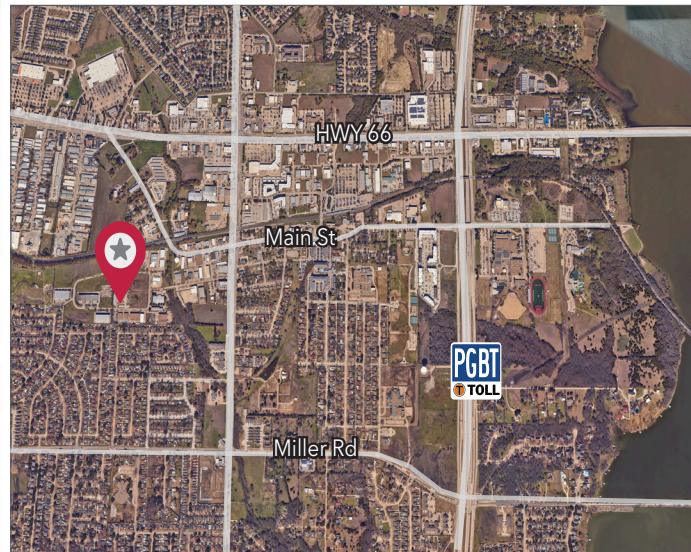
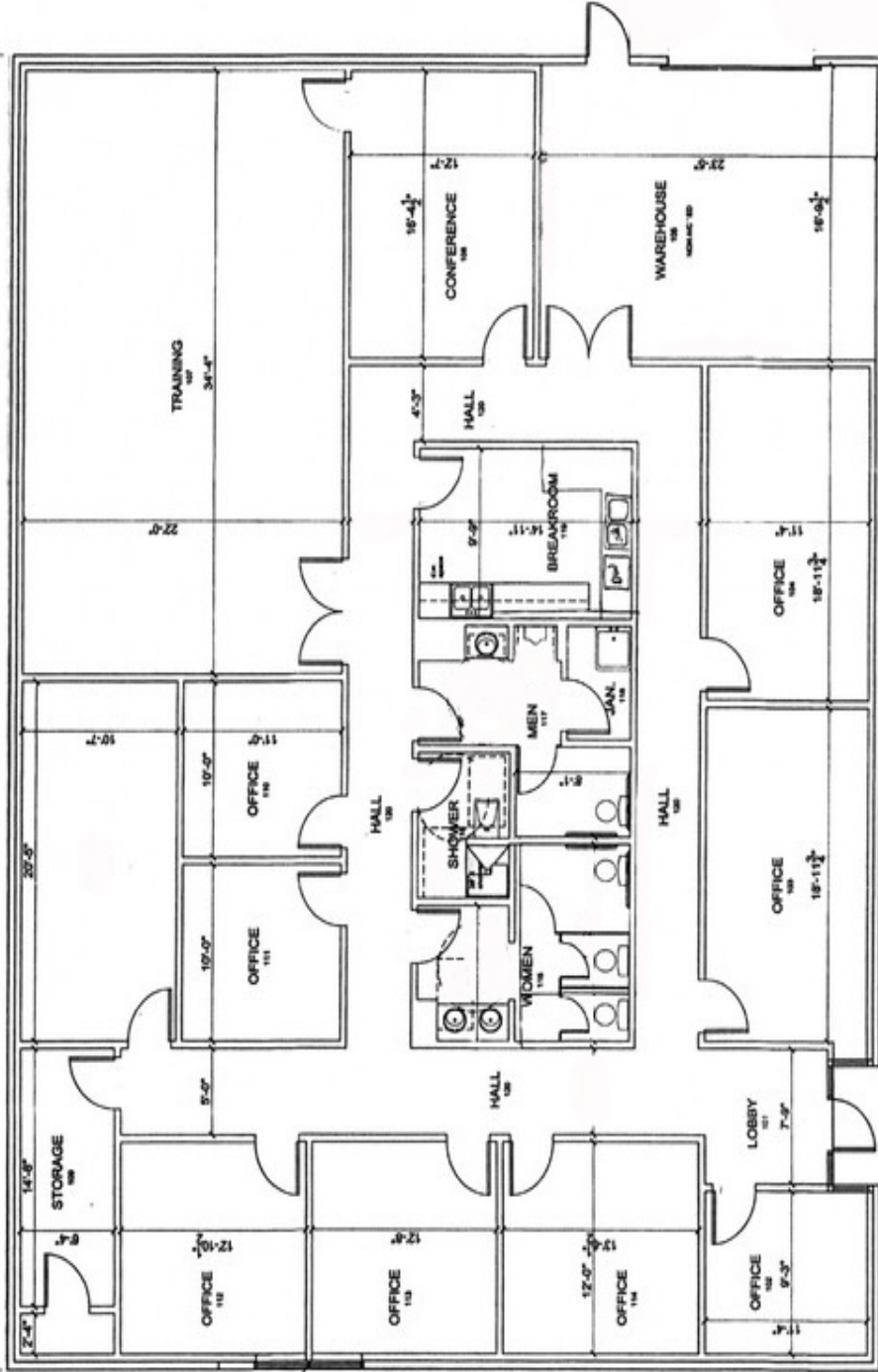
TAYLOR STELL
214.558.1969
tstell@lee-associates.com

LEE & ASSOCIATES
COMMERCIAL REAL ESTATE SERVICES
leadallas.com

FOR SALE

3001 CENTURY DR
ROWLETT, TX 75088

FLOOR PLAN



All information furnished regarding property for sale, rental or financing is from sources deemed reliable, but no warranty or representation is made to the accuracy thereof and same is submitted to errors, omissions, change of price, rental or other conditions prior to sale, lease or financing or withdrawal without notice. No liability of any kind is to be imposed on the broker herein.

FOR MORE INFORMATION:

BRETT LEWIS, SIOR
972.934.4018
blewis@lee-associates.com

TAYLOR STELL
214.558.1969
tstell@lee-associates.com

LEE & ASSOCIATES
COMMERCIAL REAL ESTATE SERVICES
leadallas.com