

PRIME HEART OF LOGAN SQUARE
6,000 SF COMMERCIAL SPACE FOR LEASE (DIVISIBLE)

YOUR BUSINESS

*Rendering

Raw commercial space for lease in a prominent one-story commercial building in the heart of Logan Square. Good visibility next to co-tenant the Dill Pickle Food Co-Op and steps to Blue-Line entrance/exit at Spaulding. Located just across from new construction 6-story apartment building with 60 residential units. Close to all Logan Square shopping, dining and entertainment. Pedestrian friendly neighborhood with Walk Score of 96.



Size:

6,000 SF (Divisible to 3,000 SF)

Rental Rate:

\$20 PSF

Rental Type:

NNN

Zoning:

B1-3

Nearby Businesses:

Gorilla Sushi
The Harding Tavern
Hopewell Brewing
Chiya Chai



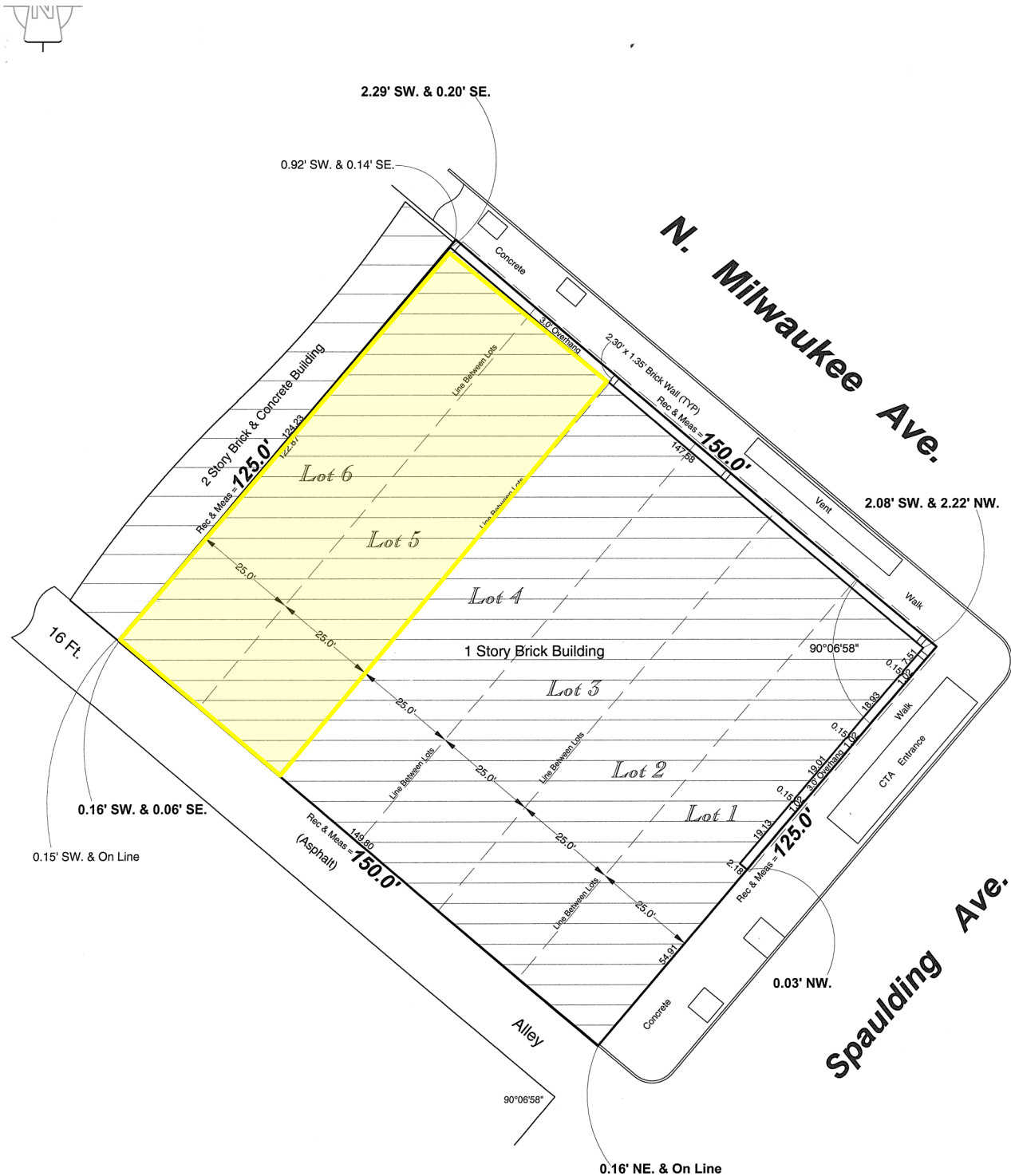
MJ WEINBERGER

847.334.2587

MJ@STRAUSSREALTY.COM

STRAUSS REALTY, LTD.
4350 N. MILWAUKEE AVE.
CHICAGO, ILLINOIS 60641
PHONE: 773-736-3600

SURVEY



MJ WEINBERGER
847.334.2587
MJ@STRAUSSREALTY.COM

STRAUSS REALTY, LTD.
4350 N. MILWAUKEE AVE.
CHICAGO, ILLINOIS 60641
PHONE: 773-736-3600

MAP



DEMOGRAPHICS

2023 Estimates by Costar Research

	1 mile	2 miles	3 miles
Population	64,907	220,097	500,202
Households	22,867	77,663	182,391
Average Household Size	2.7	2.7	2.6
Median Age	36	36.4	36.4
Average Household Income	\$101,468	\$111,013	\$117,508



MJ WEINBERGER

847.334.2587

MJ@STRAUSSREALTY.COM

STRAUSS REALTY, LTD.
4350 N. MILWAUKEE AVE.
CHICAGO, ILLINOIS 60641
PHONE: 773-736-3600