

LEASE

DOGWOOD PARK SHOPPING CENTER

5434 Dogwood Dr. Unit 5430 Milton, FL 32570



PROPERTY DESCRIPTION

Grocery Anchored Shopping Center. 2400 SF in-line unit available. Demographics within a 5 mile radius include a Total Population of 49,762 and an Average House Hold Income of \$67,313.

PROPERTY HIGHLIGHTS

- Grocery Anchored. Lighted Corner. 2400 SF In-Line Unit Available. +/-230 Parking Spaces with 5 points of ingress/egress. AADT 19,600. Total Population 49,762 & Avg. House Hold Income \$67,313 within 5 mile radius.

OFFERING SUMMARY

Lease Rate:	\$14.75 SF/yr (NNN)
Number of Units:	1
Available SF:	2,400 SF
Lot Size:	4.35 Acres

DEMOGRAPHICS	1 MILE	3 MILES	5 MILES
Total Households	2,697	10,663	20,026
Total Population	6,727	27,218	52,623
Average HH Income	\$80,489	\$93,443	\$97,504

Melissa Glyptis Simpson
(850)733-6532

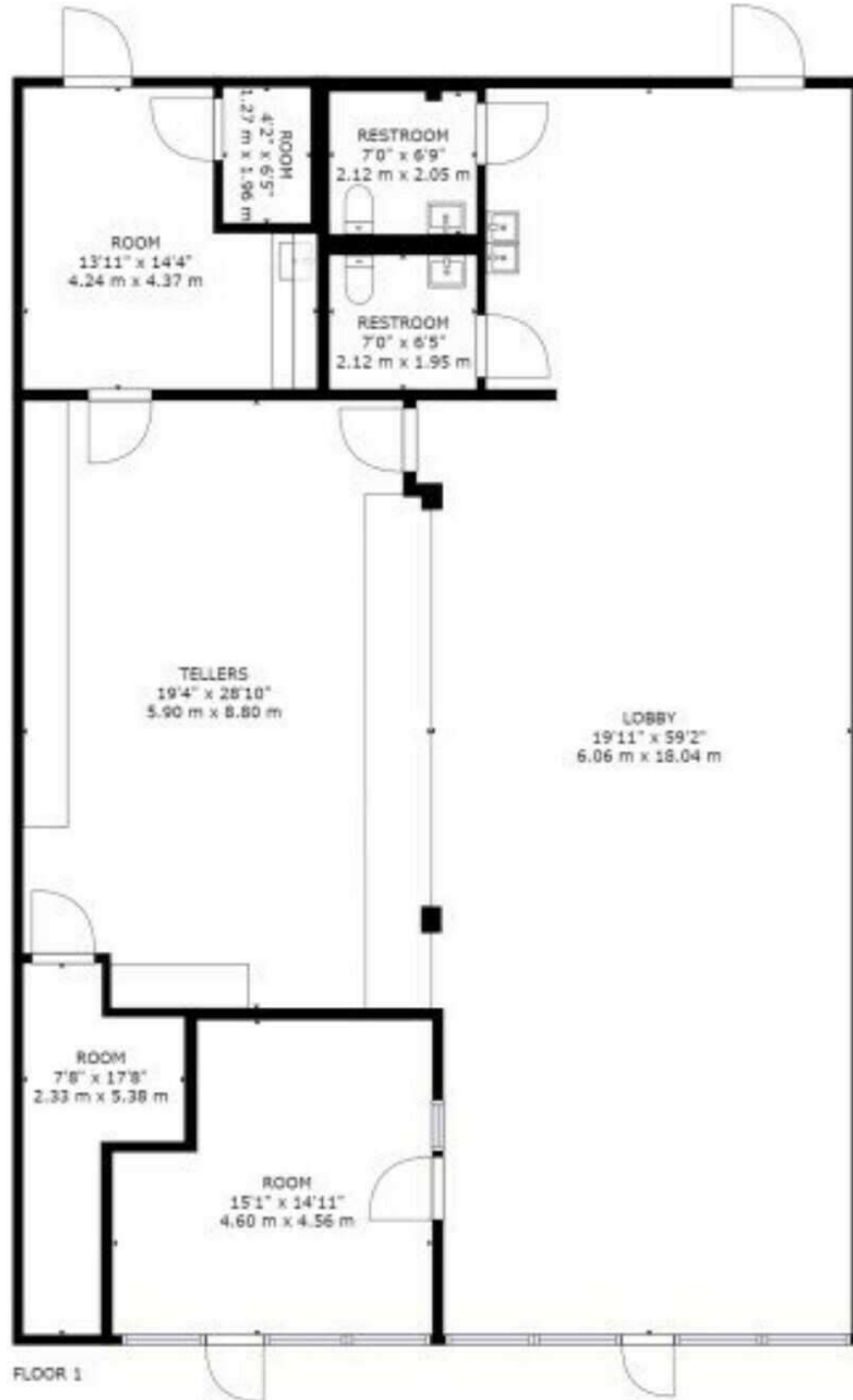


COLDWELL BANKER
COMMERCIAL
REALTY

LEASE

DOGWOOD PARK SHOPPING CENTER

5434 Dogwood Dr. Unit 5430 Milton, FL 32570



Melissa Glyptis Simpson
(850)733-6532

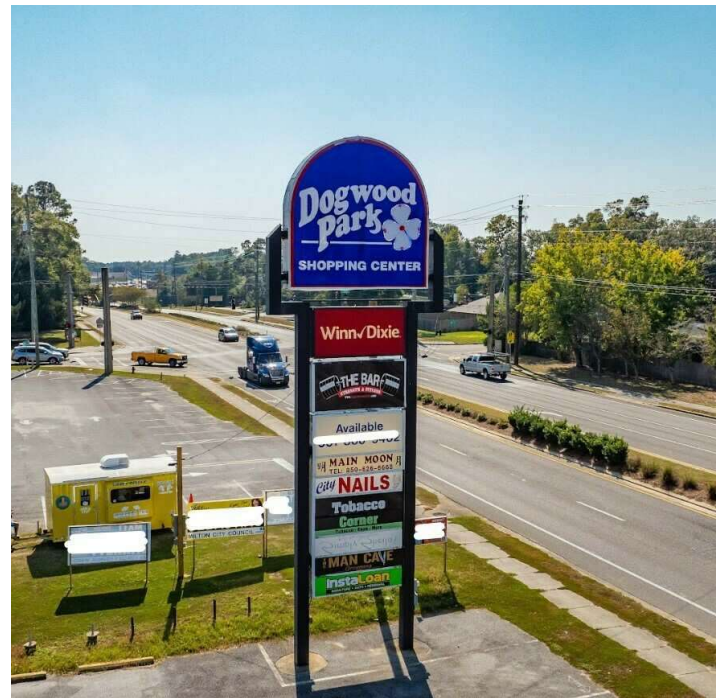


COLDWELL BANKER
COMMERCIAL
REALTY

LEASE

DOGWOOD PARK SHOPPING CENTER

5434 Dogwood Dr. Milton, FL 32570



Melissa Glyptis Simpson
(850)733-6532

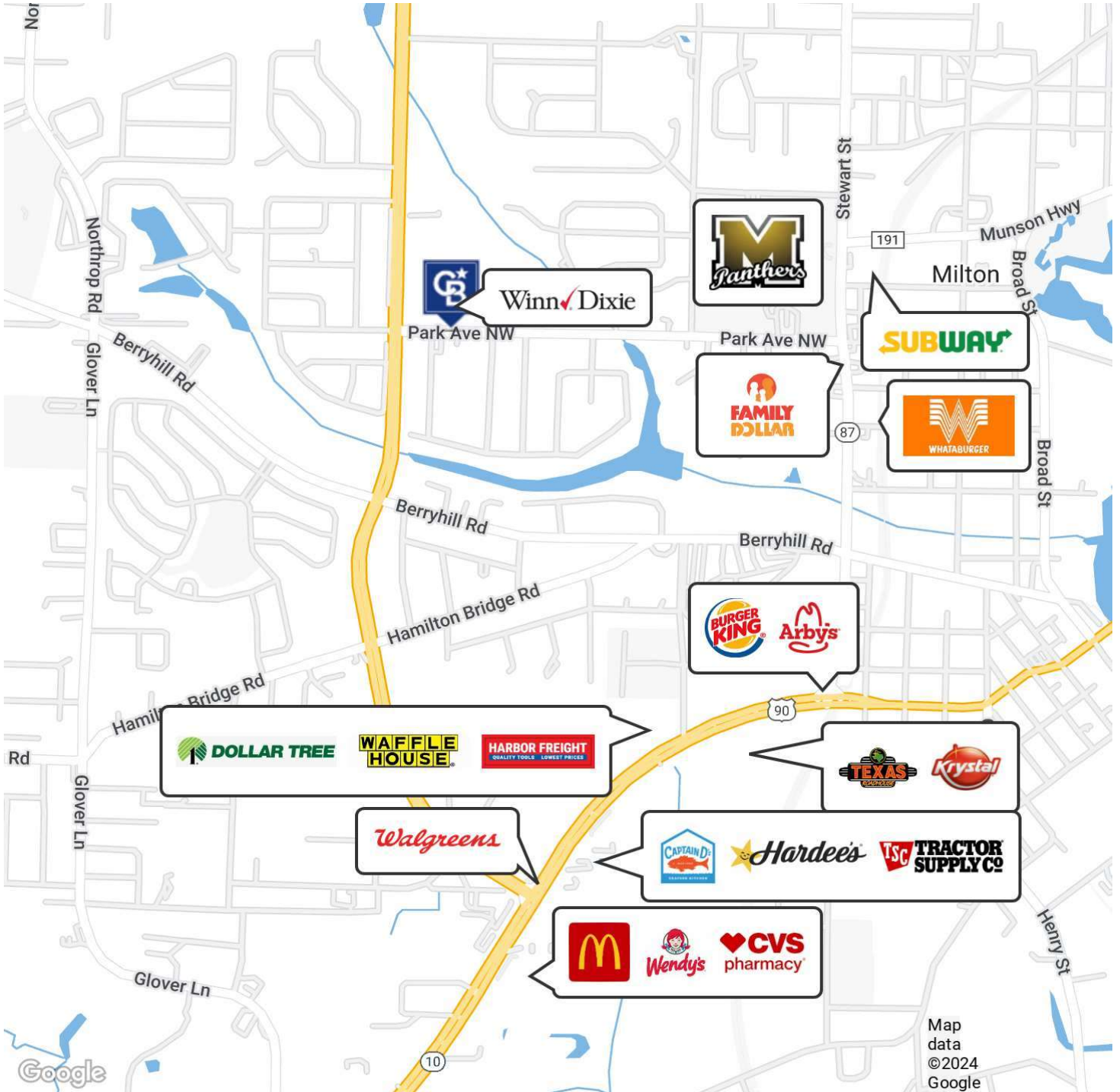


COLDWELL BANKER
COMMERCIAL
REALTY

LEASE

DOGWOOD PARK SHOPPING CENTER

5434 Dogwood Dr. Unit 5430 Milton, FL 32570



Melissa Glyptis Simpson
(850)733-6532

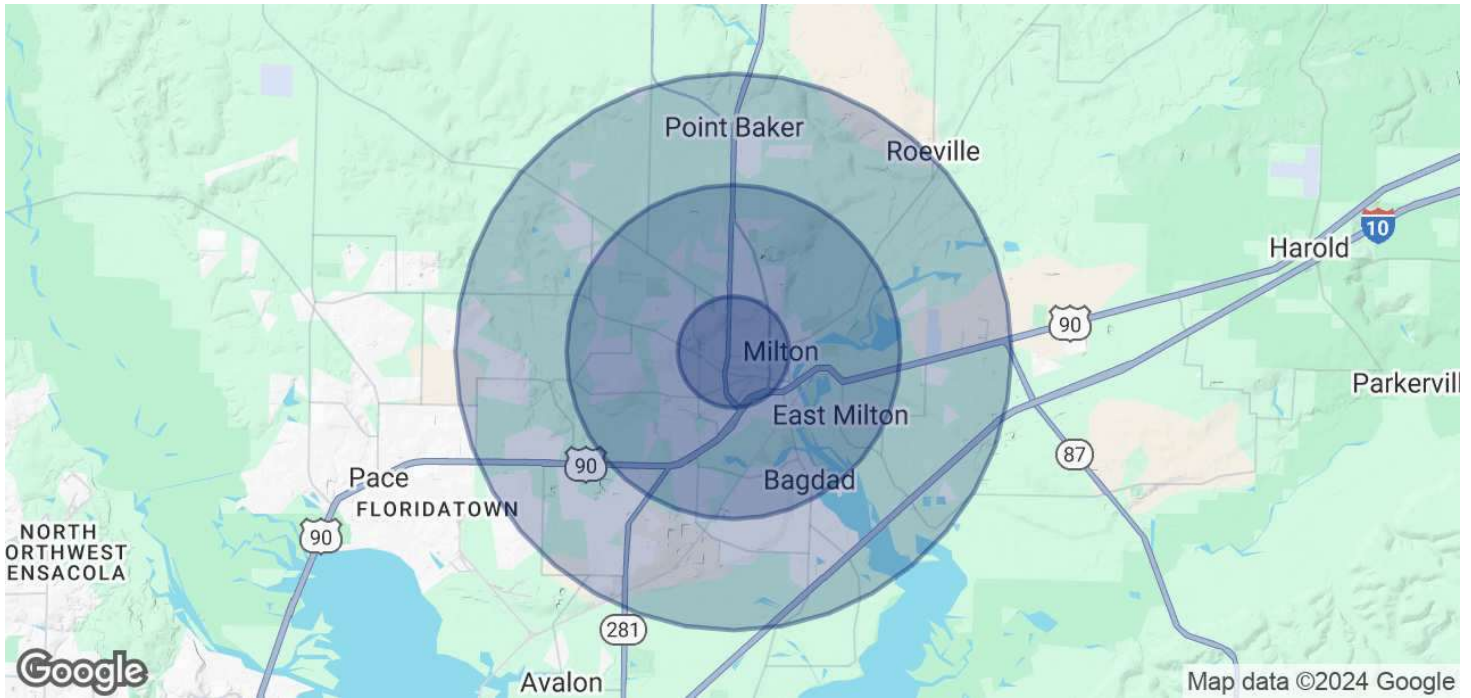


**COLDWELL BANKER
COMMERCIAL**
REALTY

LEASE

DOGWOOD PARK SHOPPING CENTER

5434 Dogwood Dr. Unit 5430 Milton, FL 32570



POPULATION

	1 MILE	3 MILES	5 MILES
Total Population	6,727	27,218	52,623
Average Age	41	41	41
Average Age (Male)	39	40	40
Average Age (Female)	44	43	42

HOUSEHOLDS & INCOME

	1 MILE	3 MILES	5 MILES
Total Households	2,697	10,663	20,026
# of Persons per HH	2.5	2.6	2.6
Average HH Income	\$80,489	\$93,443	\$97,504
Average House Value	\$257,380	\$289,409	\$288,536

Demographics data derived from AlphaMap

Melissa Glyptis Simpson
(850)733-6532



COLDWELL BANKER
COMMERCIAL
REALTY