

**FOR LEASE**

**1920 BRYANT STREET // MISSION DISTRICT**

**TCP**  
**TOUCHSTONE**  
COMMERCIAL PARTNERS



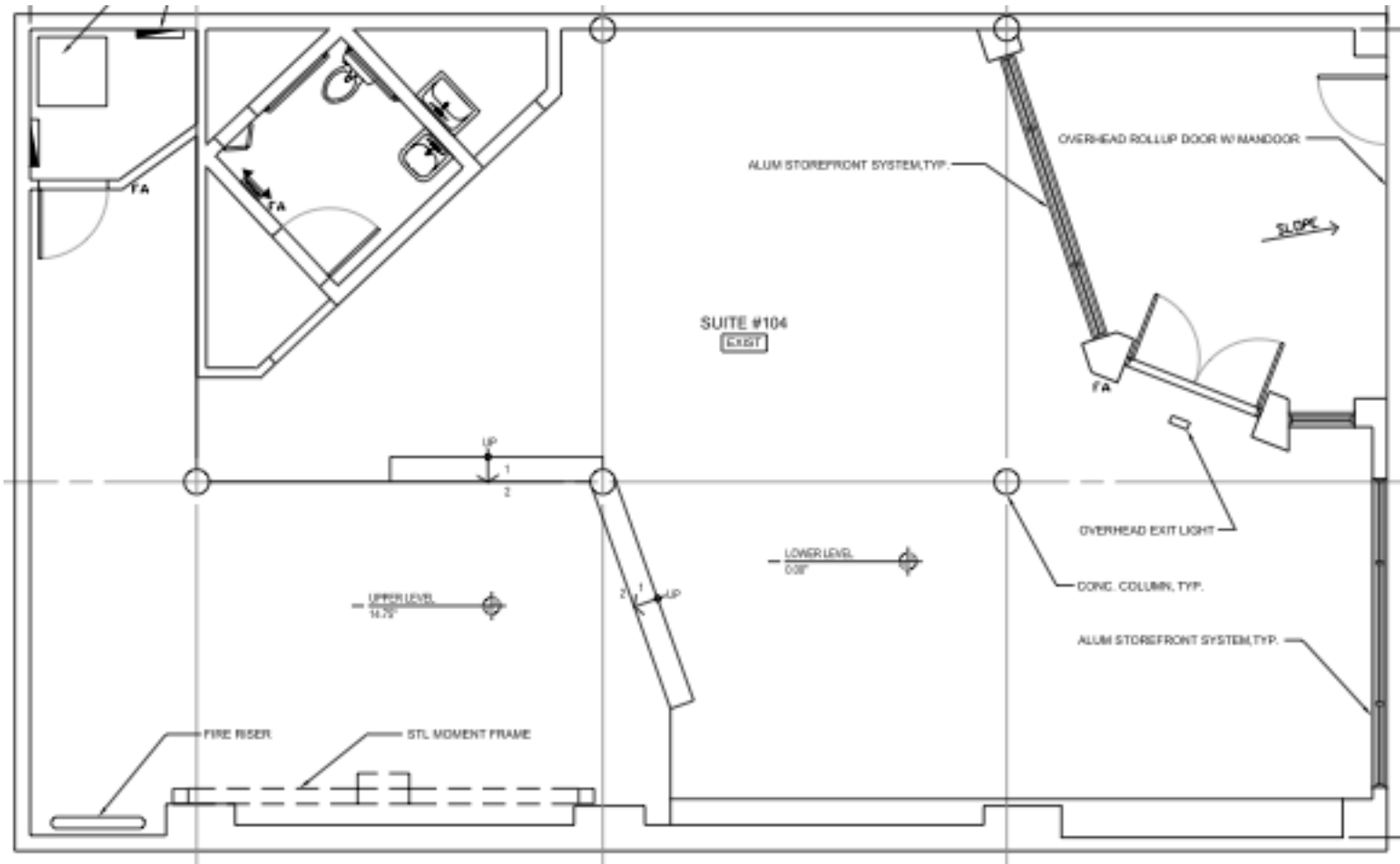
ADDRESS	1920 Bryant Street, San Francisco, CA 94110
AVAILABLE SPACE	+/- 2,688 Square Feet
RENTAL RATE	Negotiable
ZONING	Urban Mixed Use (UMU)
AVAILABLE	Immediately

BUILDING ATTRIBUTES

- + Ground Floor Commercial Unit At Mariposa Square Complex
- + High ceilings, exposed concrete, modern lighting
- + Adjacent to Starbucks Coffee, The Corner Studio, and Architecture Firm
- + Business service, retail, showroom, or design space
- + Available parking on-site



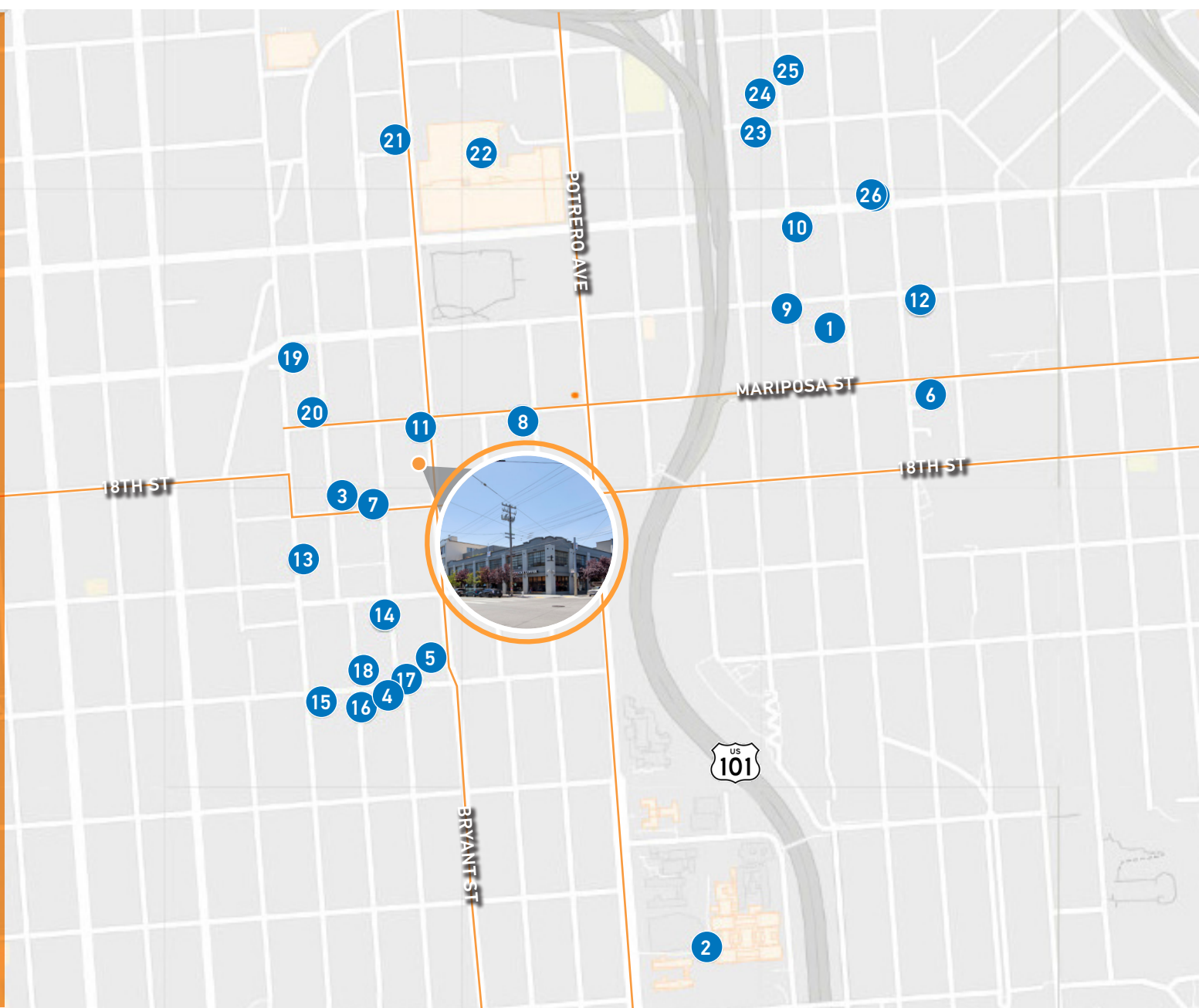




\*Conference Room Not Shown

NEARBY AMENITIES:

- 1) Whole Foods Market
- 2) Zuckerberg Hospital
- 3) Tartine Manufactory
- 4) Trick Dog Bar
- 5) Blowfish Sushi
- 6) Anchor Brewing Company
- 7) Heath Ceramics
- 8) The Morris
- 9) Live Sushi Bar
- 10) Starbucks (Rhode Island St)
- 11) Starbucks (Mariposa St)
- 12) Philz Coffee
- 13) Mission Cliffs
- 14) Universal Cafe
- 15) Flour + Water
- 16) Atlas Cafe
- 17) Central Kitchen
- 18) Sightglass Coffee
- 19) Gus's Community Market
- 20) The Archery
- 21) Sports Basement
- 22) Potrero Center
- 23) Design Within Reach
- 24) Restoration Hardware
- 25) San Francisco Design Center
- 26) Yoga Tree Potrero Hill



1920  BRYANT STREET



**TCP**  
**TOUCHSTONE**  
COMMERCIAL PARTNERS

Corp. Lic. 01112906  
[www.tcp.com](http://www.tcp.com)

**JOHN-CLAY MORRIS**  
direct (415) 539-1112  
[jcmorris@tcp.com](mailto:jcmorris@tcp.com)  
CA DRE # 01263079