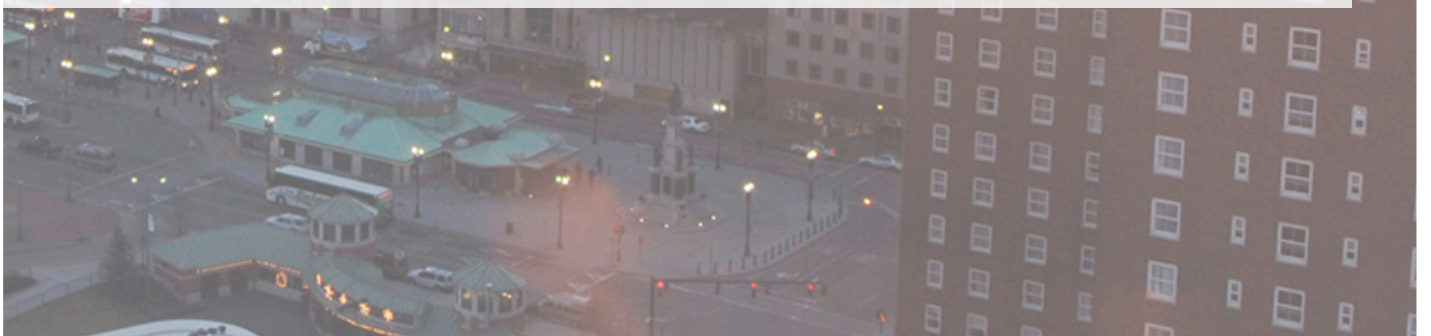


sweeney

REAL ESTATE & APPRAISAL

OFFICE FOR SALE

890 CENTERVILLE ROAD
WARWICK - RHODE ISLAND



One Turks Head Place, Suite 850 • Providence, Rhode Island 02903
T: 401.331.9300 • F: 401.331.9306 • www.sreari.com



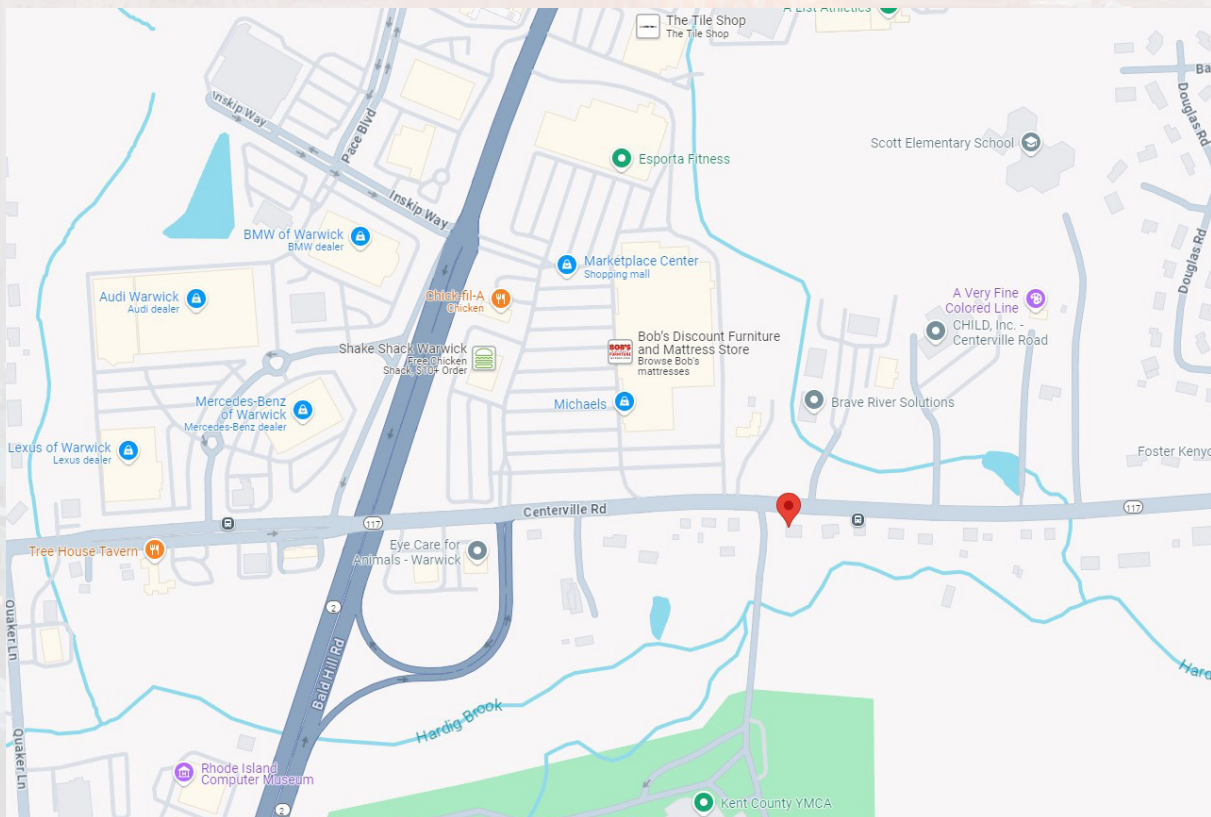
KEVIN CASEY | KCASEY@SREARI.COM | 401-331-9300 | 401-464-2663

890 CENTERVILLE ROAD WARWICK - RHODE ISLAND

DEMOGRAPHICS

Radius	Population	Average HH Income
1 Mile	4,176	\$83,584
3 Miles	71,549	\$89,983
5 Miles	148,311	\$101,836

AMENITIES MAP



KEVIN CASEY | KCASEY@SREARI.COM | 401-331-9300 | 401-464-2663

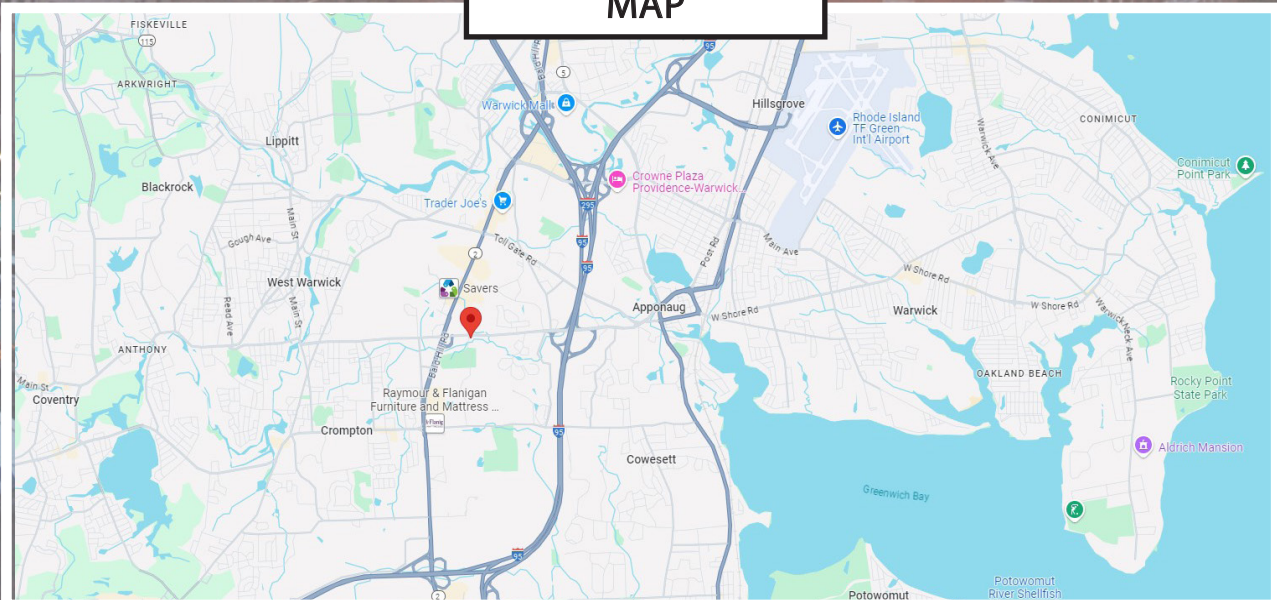
890 CENTERVILLE ROAD WARWICK - RHODE ISLAND

ASKING PRICE: \$329,999
(PLAT 242, LOT 29)

PROPERTY DETAILS

- 1,448± SF Office
- 0.56± Acres of Land
- High Traffic Area: 26,825
- Across from Centerville Commons Office Park
- Commercial Corridor of Centerville Road
- Located along Bus Line
- Estimated Taxes: \$5,700.97
- 1 Mile to I-95

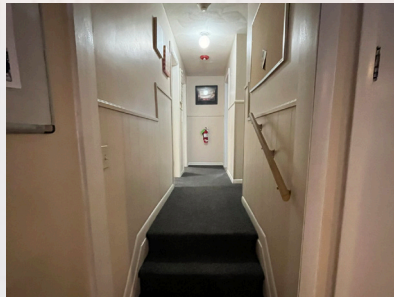
MAP



KEVIN CASEY | KCASEY@SREARI.COM | 401-331-9300 | 401-464-2663

890 CENTERVILLE ROAD WARWICK - RHODE ISLAND

ADDITIONAL PHOTOS



All information furnished regarding property for sale, rental or financing is from sources deemed reliable. But no warranty or representation is made as to the accuracy thereof and same is submitted subject to errors, omissions, change or price, rental or other conditions, prior sale lease or financing or withdrawal without notice.



One Turks Head Place, Suite 850 • Providence, Rhode Island 02903
T: 401.331.9300 • F: 401.331.9306 • www.sreari.com

