

Rosewood Plaza

Retail/ Office Space for Lease



5586 N. Orange Blossom Trail
Orlando, FL 32810

Property Details:

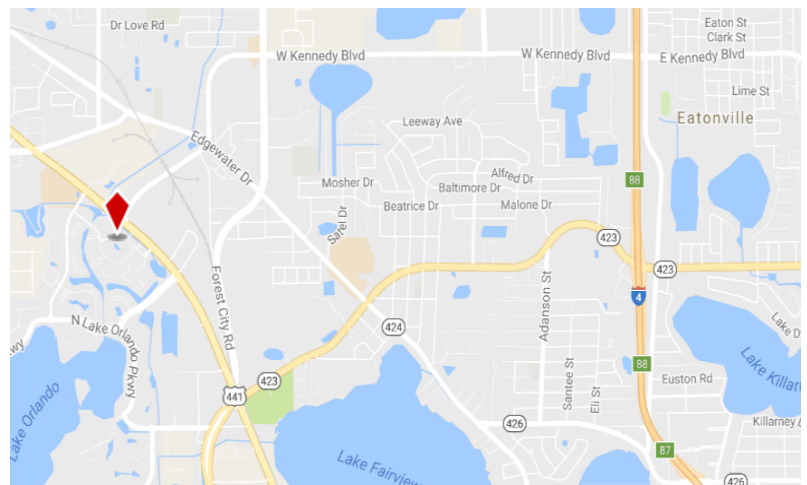
Total Space Available	2,500 SF
Rental Rate	Negotiable NNN
Min. Divisible	2,500 SF
Max. Contiguous	2,500 SF
Property Type	Retail
Property Sub-type	Office
Building Size	28,265 SF

Spaces:

Suite	Space Available	Min Divisible	Max Contiguous	Price	Available	Description
5586	2,500 SF	2,500 SF	2,500 SF	Upon Request	Now	Retail/Office

Location Description:

- Single story building
- Quick Access to I-4 and downtown
- Pylon signage available
- 24 hour traffic count: 30,500 vehicles
- Ample and convenient parking
- Restaurants and shopping nearby
- AC-1/W Zoning



Commercial Sales & Leasing | Property Management | Project Development | Acquisitions & Dispositions | Construction Services

Southeastern Realty Group, Inc. - 933 Lee Road Suite 400 - Orlando, FL 32810 - t: 407-629-5595 - f: 407-645-2035

The information contained herein is from sources deemed reliable, but no warranty or representation is made as to the accuracy thereof and no liability may be imposed.

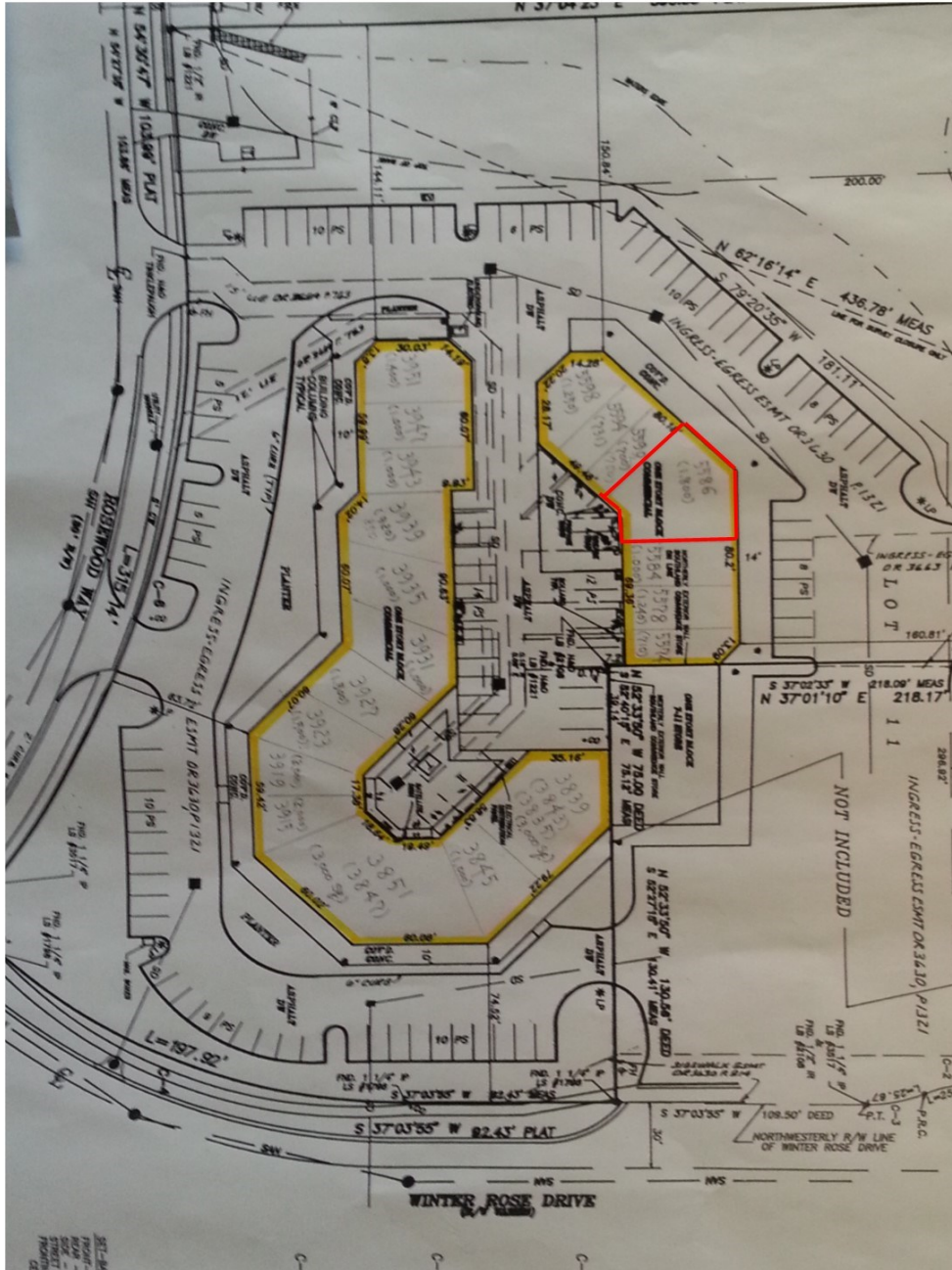
Site Plan:

Rosewood Plaza

5586 N. Orange Blossom Trail

Orlando, FL 32810

2,500 SF



Southeastern Realty Group
933 Lee Road, Suite 400, Orlando, Florida 32810
407-629-5595 phone, 407-645-2035 fax
Visit our website at www.southeasternrealty.com

The information contained herein is from sources deemed reliable, but no warranty or representation is made as to the accuracy thereof and no liability may be imposed.