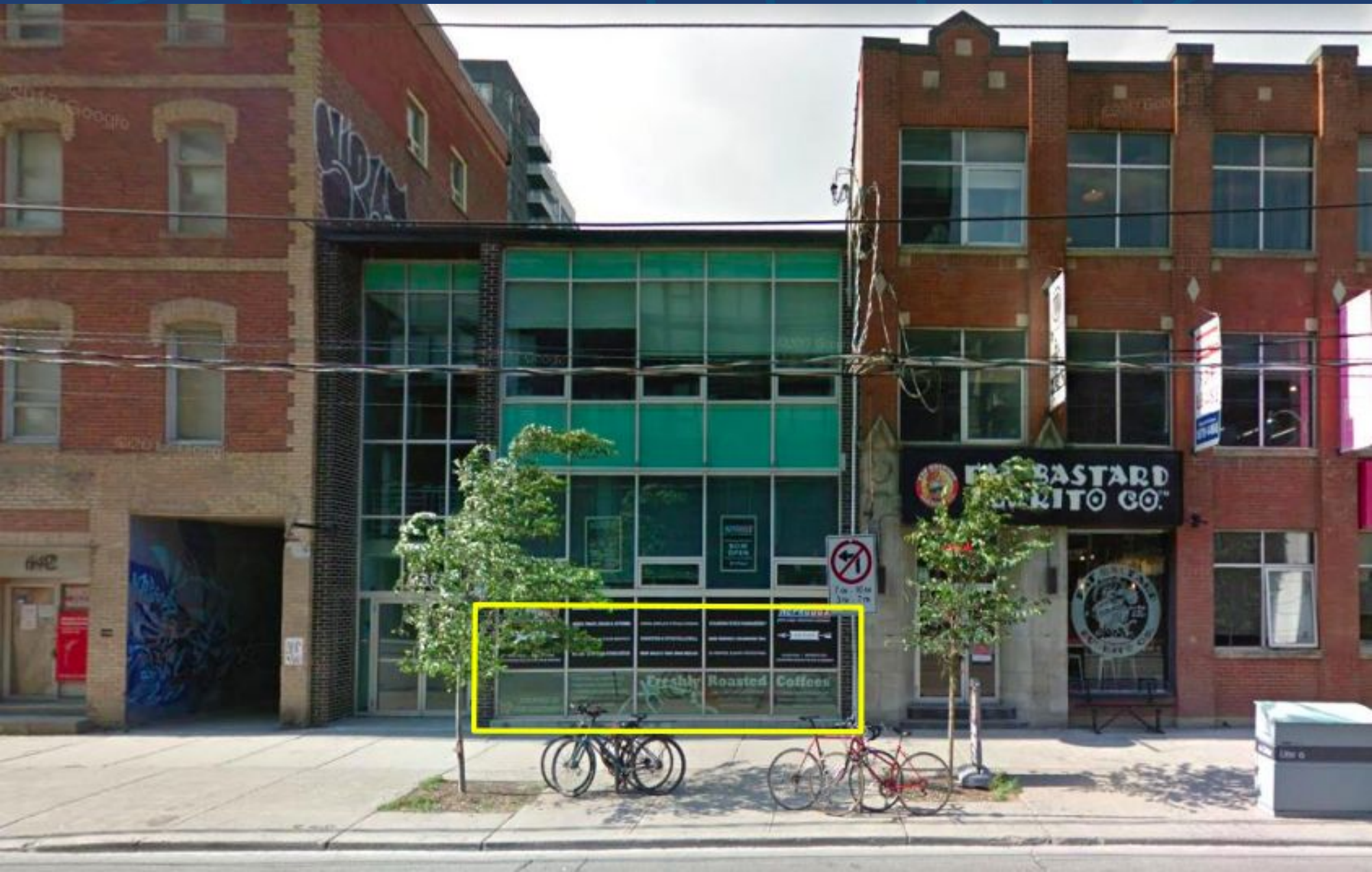


FOR LEASE | LOWER LEVEL OFFICE SPACE
636 KING STREET WEST
TORONTO | ON



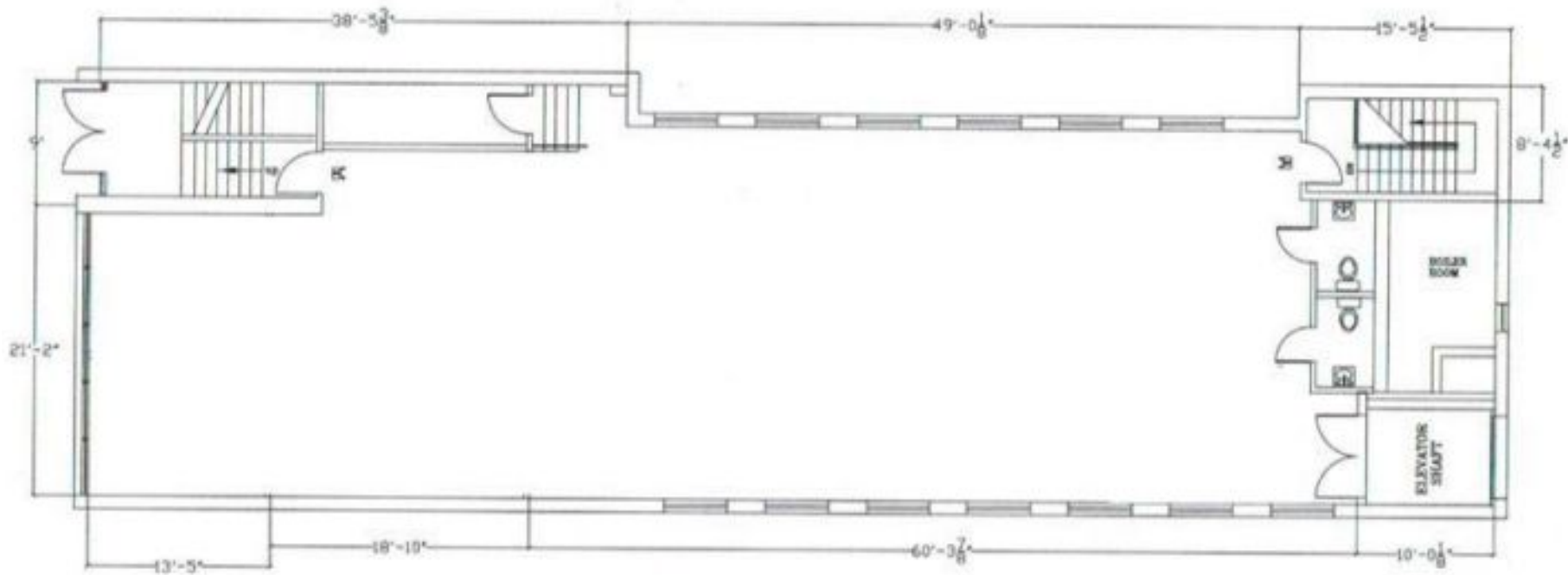


DETAILS

| | |
|-------------------------------|---|
| Location | North side of King Street West, East of Bathurst Street Click Here for Map |
| Building Details | 3,000 Square Feet |
| Semi-Gross Rental Rate | \$38.00 PSF/YR |
| Additional Rent | Hydro |
| Possession | Immediate |

FEATURES

- Prime King Street West location in the Entertainment District.
- Open concept, lower level office space.
- Includes rare two parking spaces on site.
- 10 foot ceilings, Kitchenette with dining area
- Two private washrooms.
- Excellent shipping and receiving via back laneway.
- Freight elevator and additional rear entry.
- Air conditioned & forced air gas heating.



EXISTING BASEMENT FLOOR PLAN



PHOTOS





PHOTOS



636 KING STREET WEST | FOR LEASE



AREA MAP

636 KING STREET WEST | FOR LEASE



METROPOLITAN COMMERCIAL

626 King St West, Suite 302
Toronto, ON
M5V 1M7

www.metcomrealty.com

CONTACT:

STEVEN PHILLIPS*
Vice President, Sales Representative
416.703.6621 ext. 233
Steven.phillips@metcomrealty.com

MING ZEE**
Principal, Broker of Record
416.703.6621 ext. 222
Ming.zee@metcomrealty.com