

18,000 SF AVAILABLE



533

WASHINGTON STREET

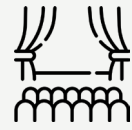
NEWMARK

18,000 SF

RETAIL / RESTAURANT
FLAGSHIP OPPORTUNITY

Located in the center of the vibrant Downtown Crossing neighborhood, 533 Washington Street is a highly-visible destination providing a flagship retail presence in Boston. Steps from the Financial District and Boston Common, the property is surrounded by several popular retailers, restaurants, luxury residential towers, boutique hotels, and the city's highest concentration of office space. With over 50,000 daily pedestrians on Washington Street and residents in the units above, 533 Washington Street is an ideal retail opportunity in a central location.





533 Washington Street is surrounded by several cultural centers and theaters including neighboring Emerson Paramount Center, Citizens Bank Opera House, and Suffolk University Modern Theatre



Located in a 36M SF office market with 172,358 employees within a half mile



Public transportation options within immediate walking distance include the MBTA Blue, Orange, Red and Green subway lines as well as Boston's busiest terminal, South Station (MBTA/Amtrak service to New York and points west/south)

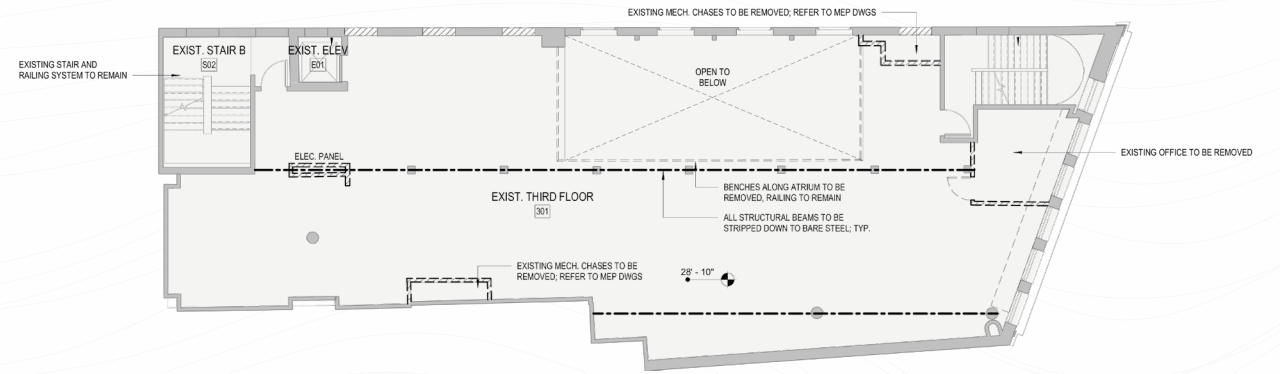
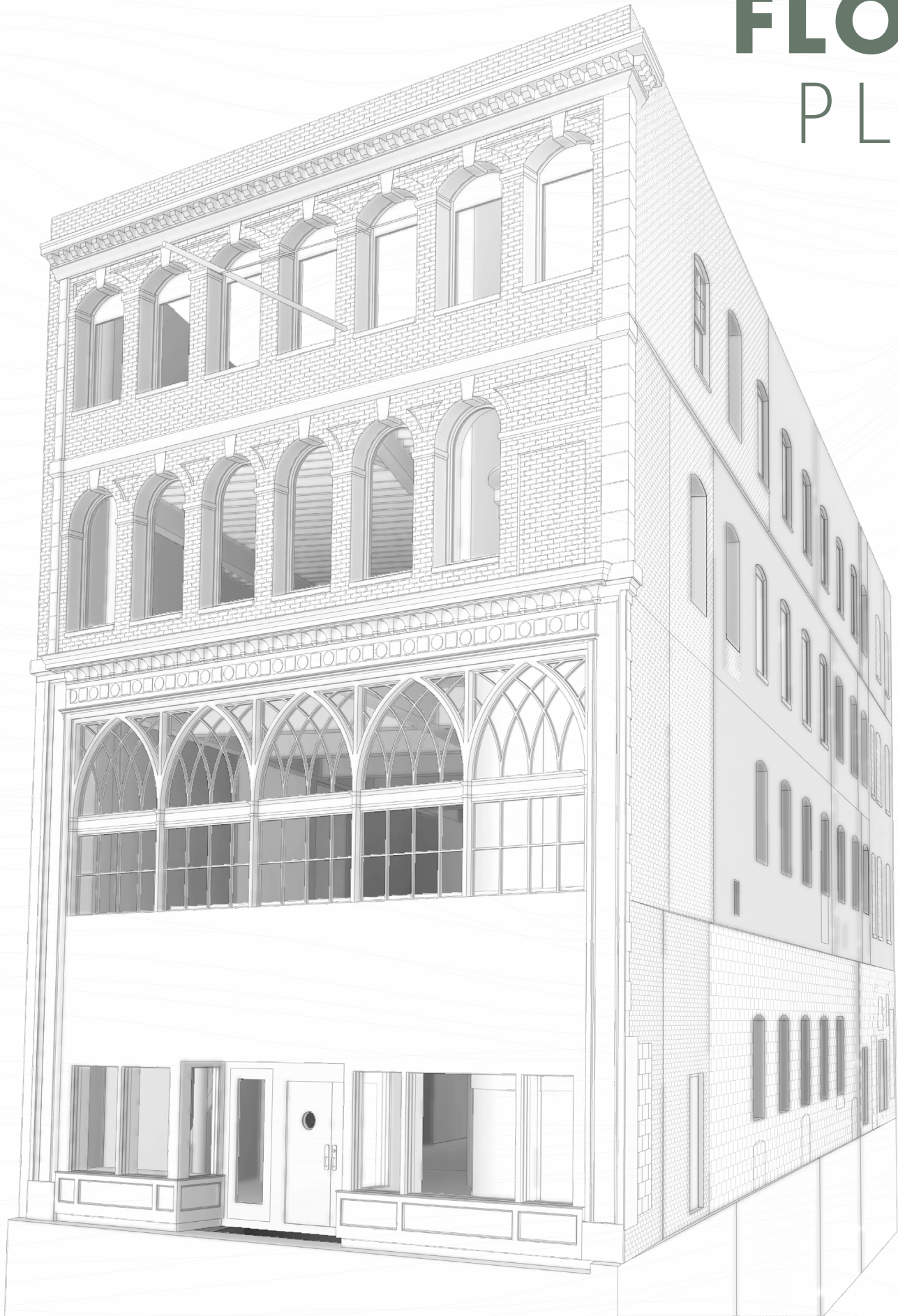


Highly accessible from Interstates 93 and 90 (Massachusetts Turnpike)

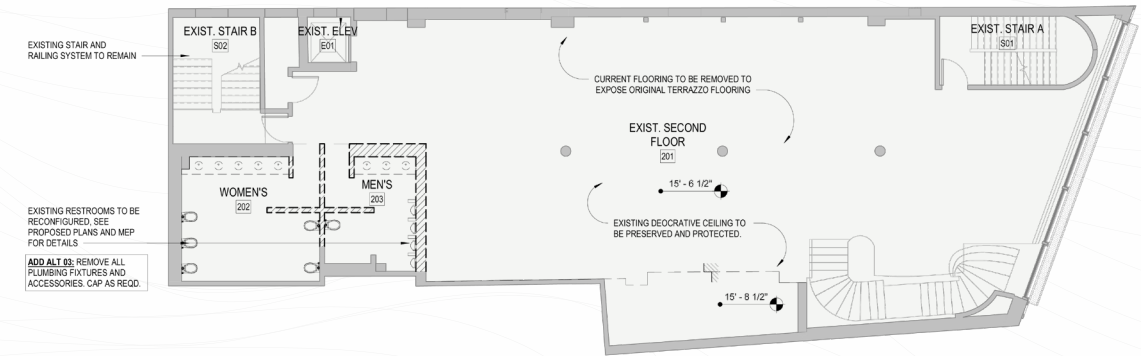


LOCATION & ACCESS

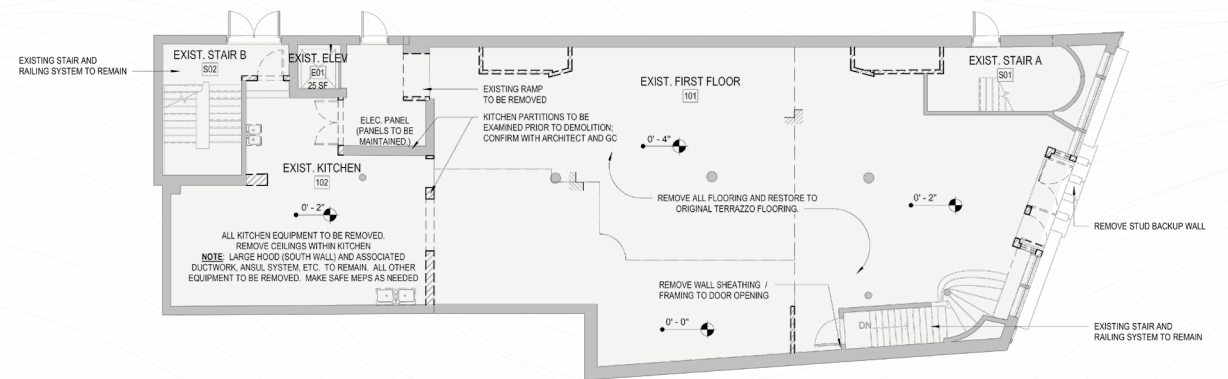
FLOOR PLANS



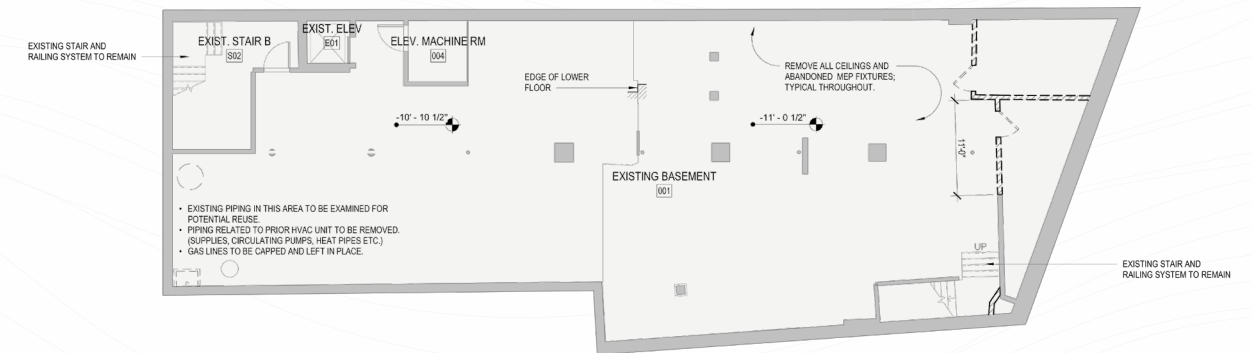
FLOOR 3



FLOOR 2



FLOOR 1



BASEMENT



533

WASHINGTON STREET

BRANDON ESTES

brandon.estes@nrmk.com
617.863.8136

ELA HAZAR

ela.hazar@nrmk.com
781.929.4949

NEWMARK