



28,051 RSF available in West Houston

- **Quoted base rental rate: \$5.00/RSF NNN**
- Size: 28,051 RSF
- Estimated operating expenses (2024): \$14.54/RSF
- Tenant improvement allowance: As-Is
- Parking: 112 unreserved parking spaces in building garage
- Term: Through May 31, 2027
- FF&E: Negotiable



Onsite property management
and 24/7 security



Onsite fitness center



Private conferencing facilities



Onsite deli

**Get more
information**

Drew Coupe, SIOR
Principal
+1 832 226 6726

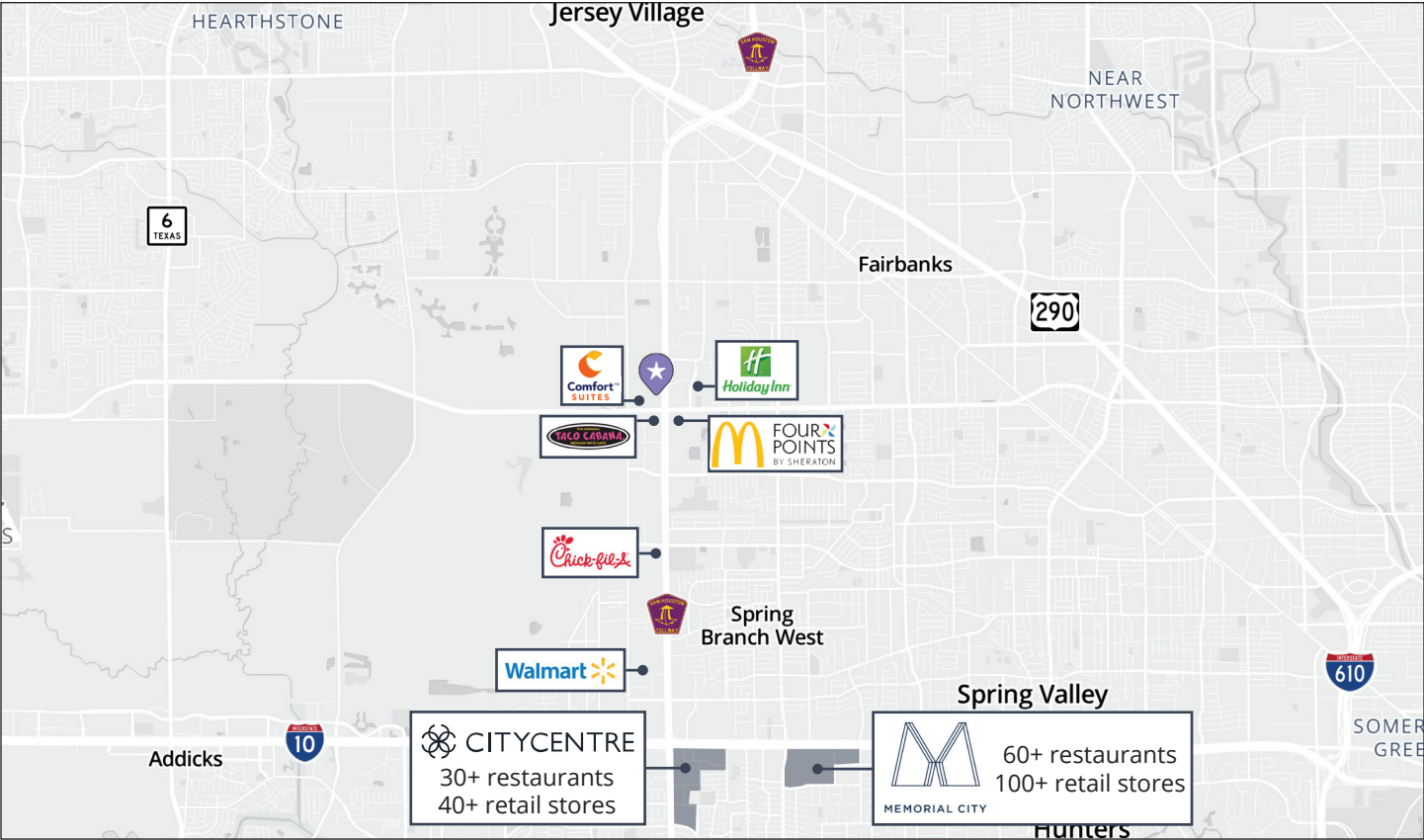
Anthony Squillante
Principal
+1 713 447 8368

avisonyoung.com

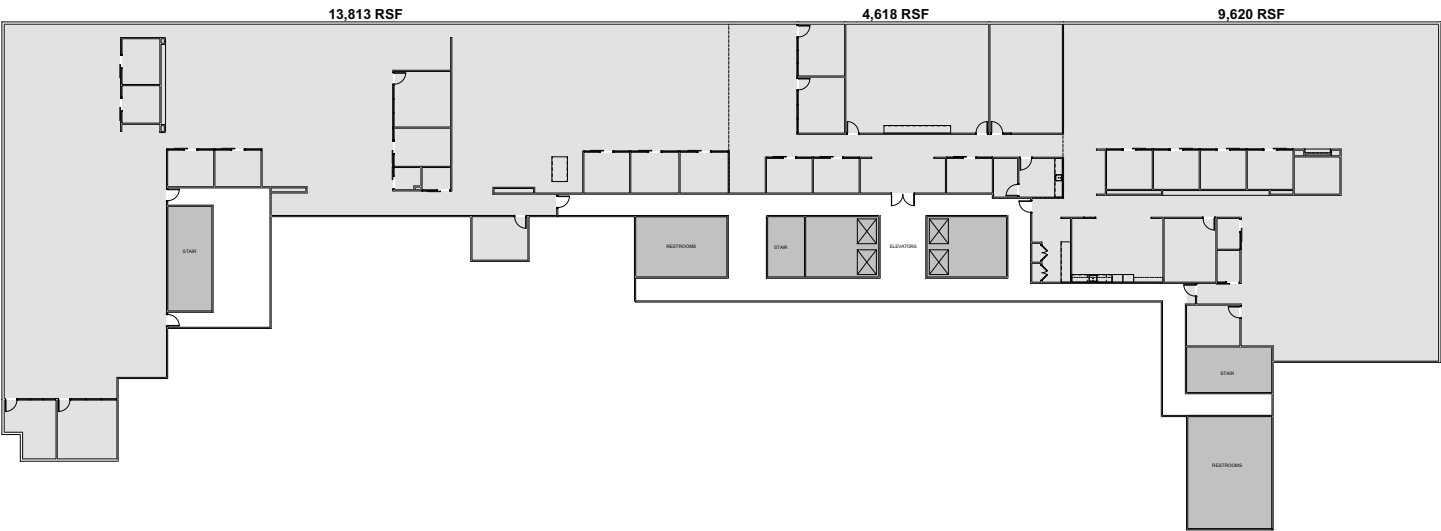
Office Space For Sublease

Westway Plaza
11330 Clay Road
Houston, TX 77041

Nearby amenities:



Floorplan layout:



Get more
information

Drew Coupe, SIOR
Principal
+1 832 226 6726

Anthony Squillante
Principal
+1 713 447 8368

avisonyoung.com

Office Space For Sublease

Westway Plaza
11330 Clay Road
Houston, TX 77041



**Get more
information**

Drew Coupe, SIOR
Principal
+1 832 226 6726

Anthony Squillante
Principal
+1 713 447 8368

[avisonyoung.com](https://www.avisonyoung.com)