



VIEW  
VIRTUAL  
TOUR



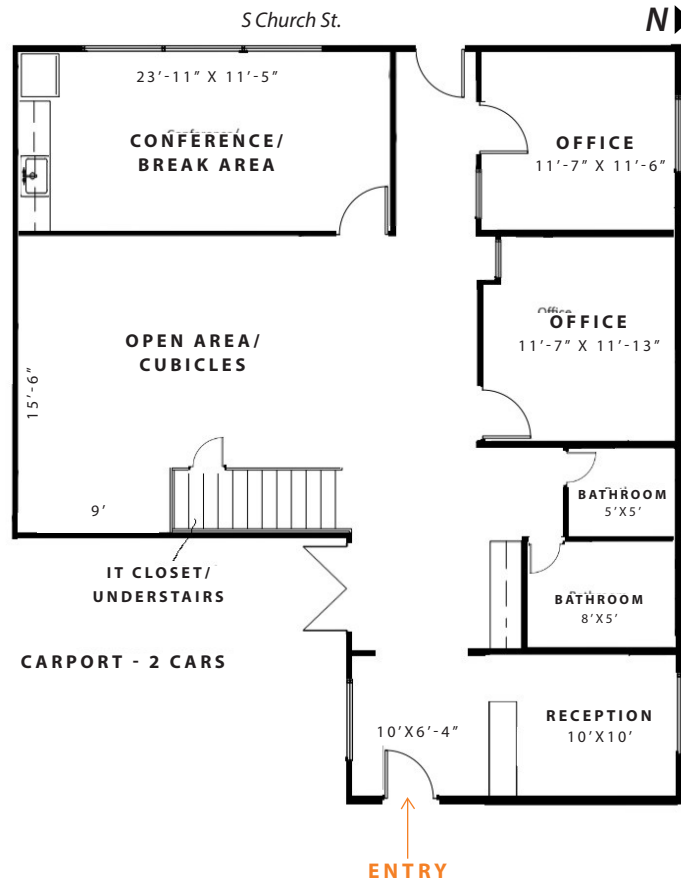
2,200 SF  
AVAILABLE

## 901 E. LOULA - OLATHE, KS

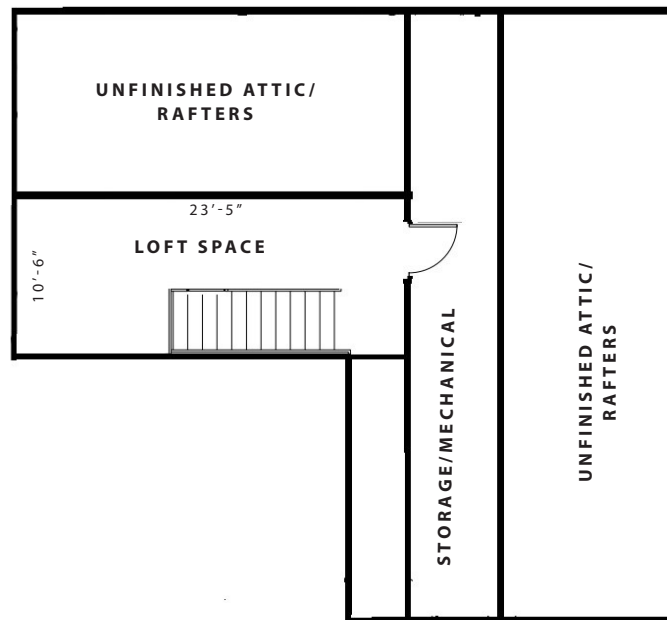
### OFFICE BUILDING FOR SALE OR LEASE

- Freestanding building with 8 parking spaces; 2 in carport
- Build-out includes a reception area, conference/break room, 2 offices, and an open area for cubes
- Convenient location near Downtown Olathe with easy access to Santa Fe and I-35

# SITE PLAN



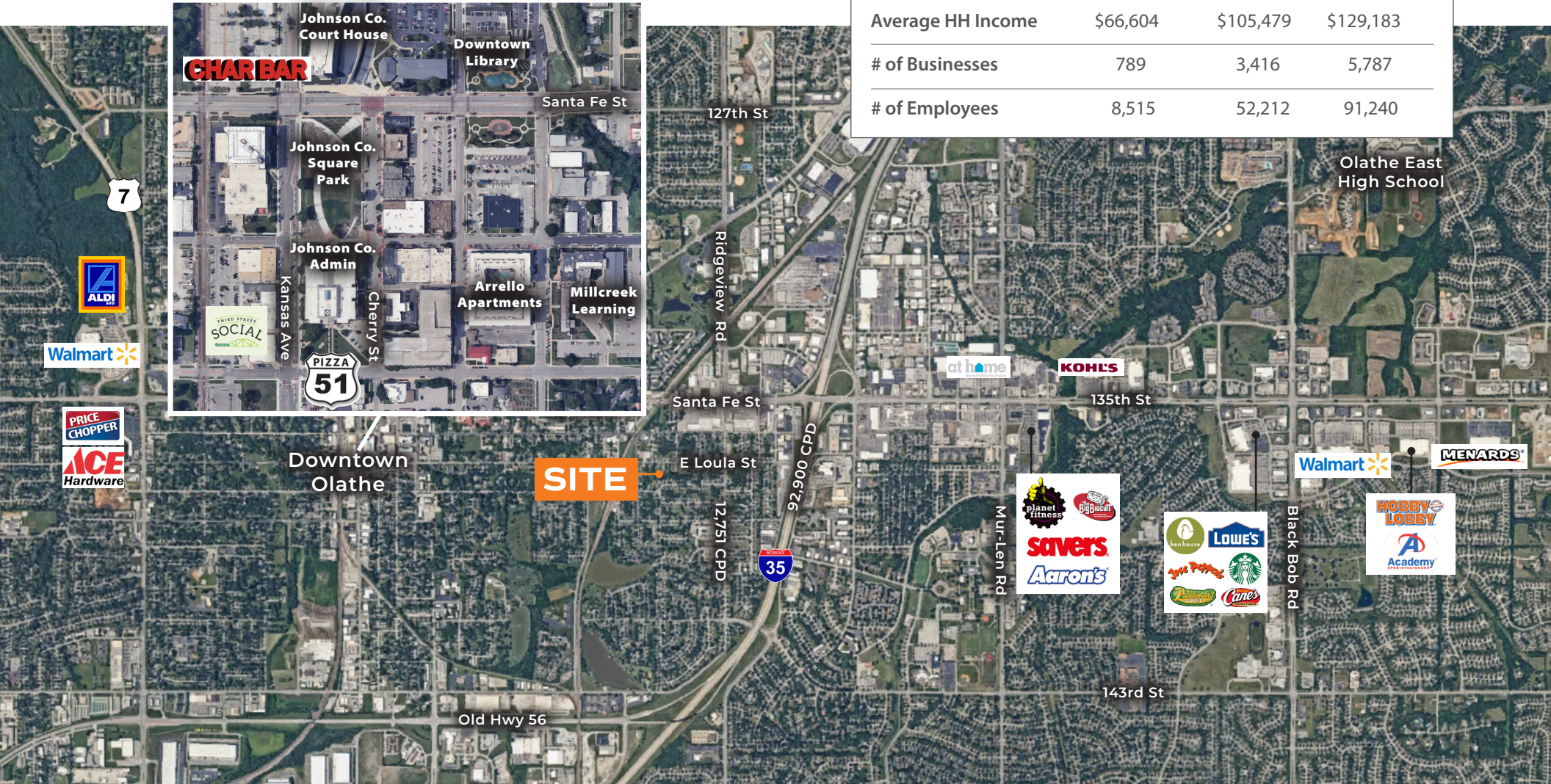
**2,200 SF**  
1<sup>st</sup> Floor



2<sup>nd</sup> Floor

# AREA SUBMARKET

DEMOGRAPHICS	1 MILE	3 MILE	5 MILE
Population	11,687	94,021	170,525
Average HH Income	\$66,604	\$105,479	\$129,183
# of Businesses	789	3,416	5,787
# of Employees	8,515	52,212	91,240



901 E LOULA ST • OFFICE SPACE • OLATHE, KS