



OFFICE SPACE FOR LEASE

2828 Croasdaile Drive

Durham, NC 27705

**AVISON
YOUNG**

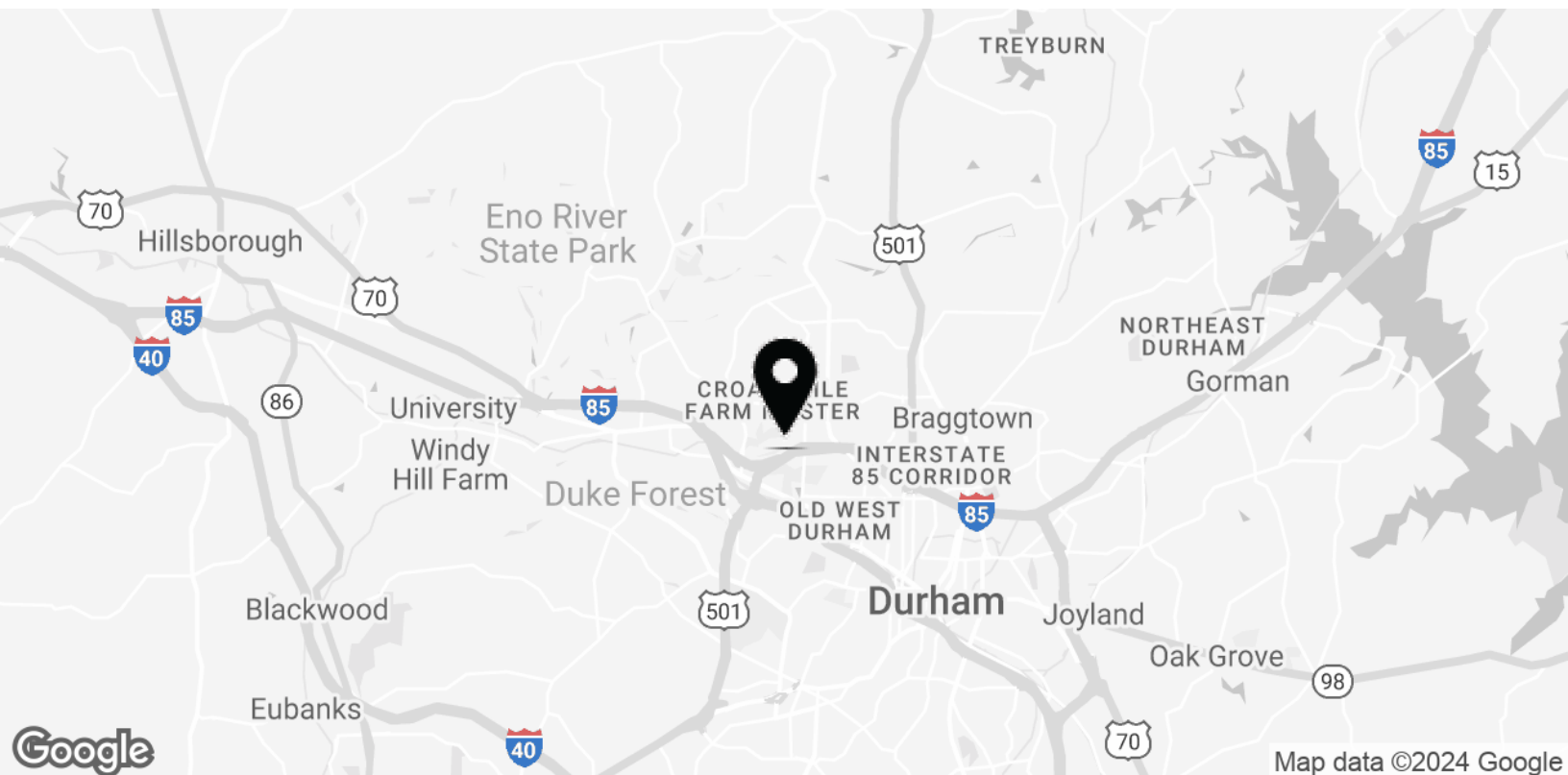
Property highlights

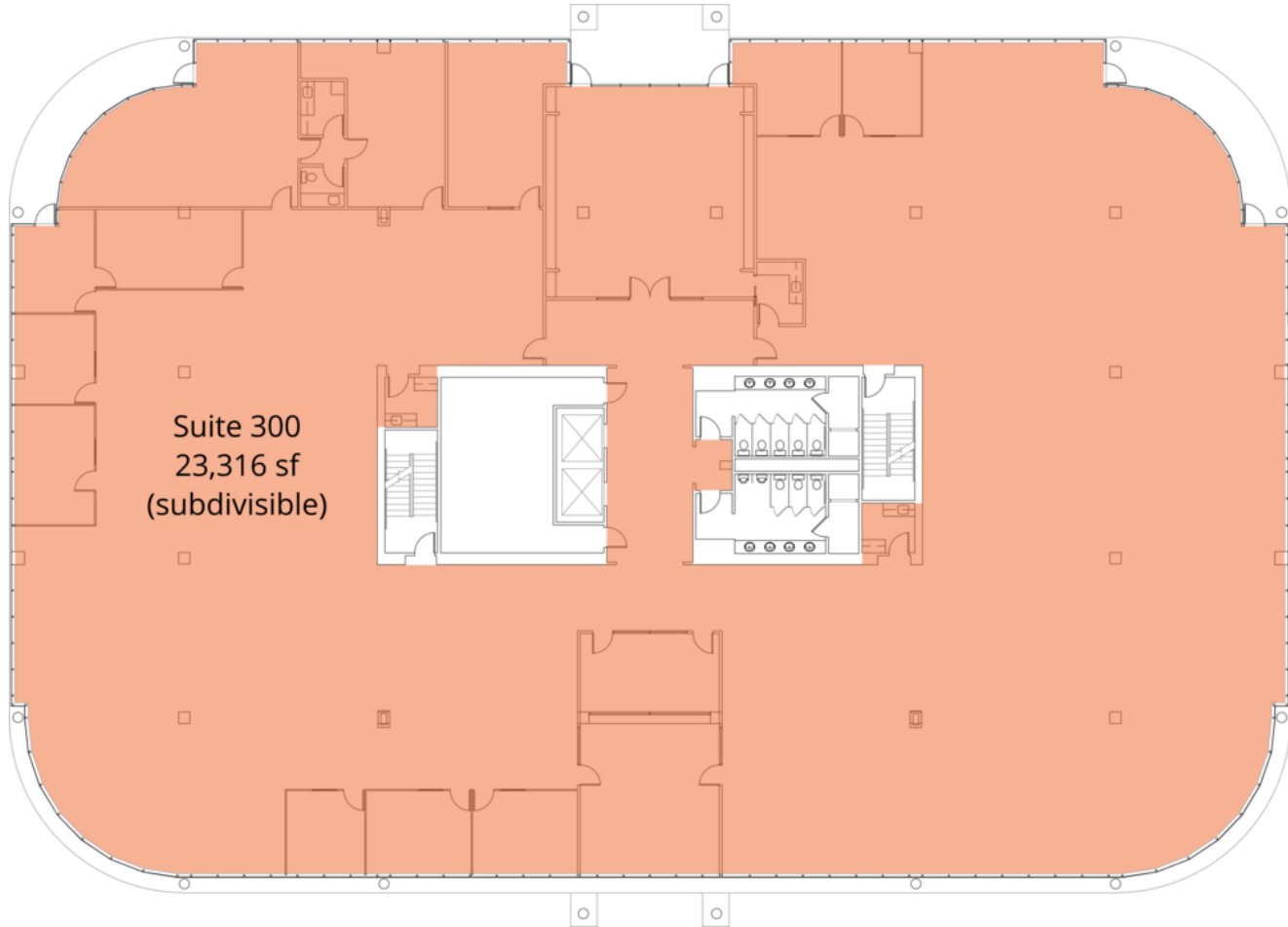
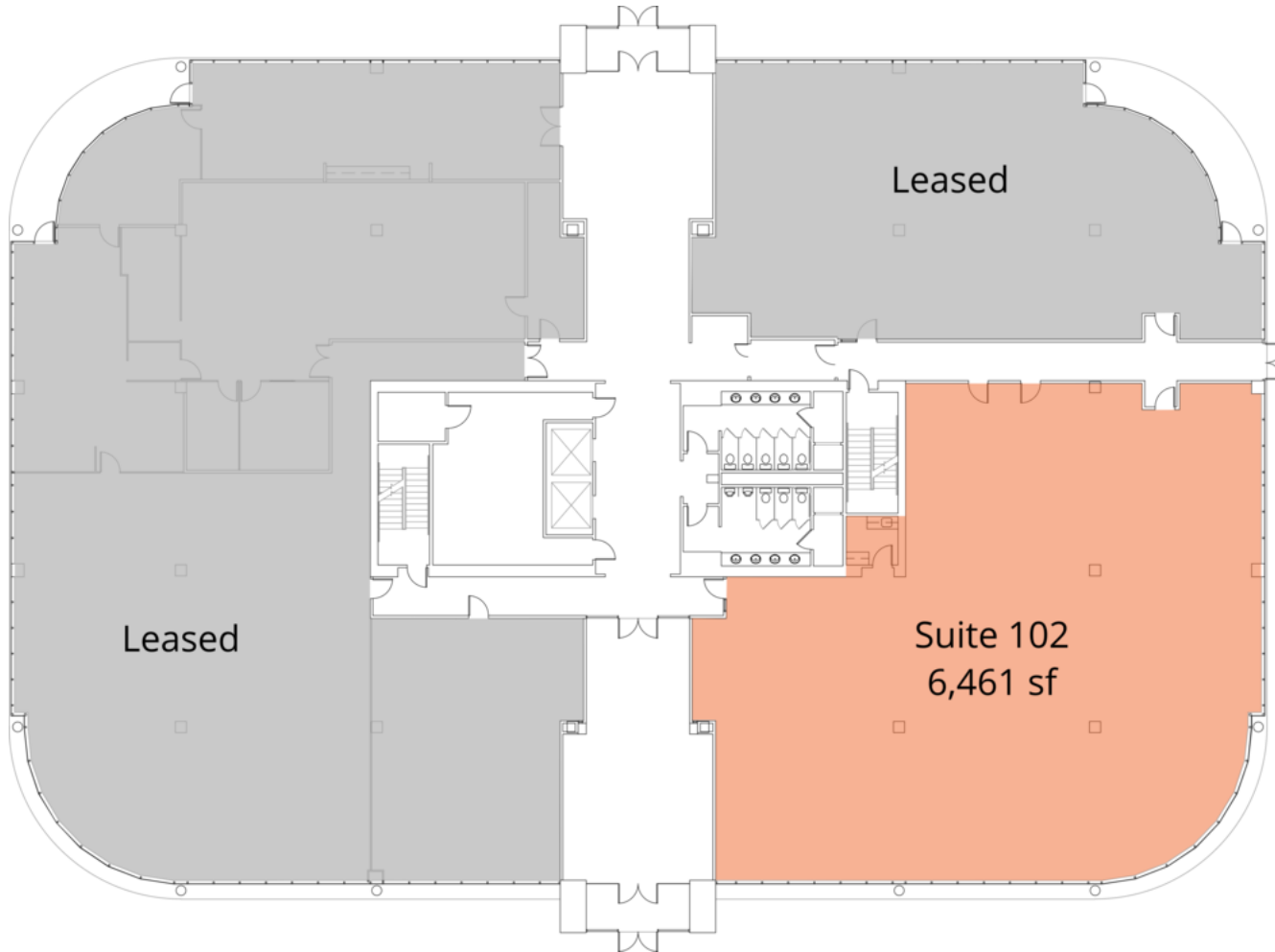
Office suites available for occupancy up to 23,316 sf

- Full floor availability
- Double glass door suite entry off first floor lobby
- Balconies on each level
- Shower facilities on 3rd floor
- EV charging stations
- Adjacent to Croasdaile Country Club
- Located central to Durham with access to I-85, Highway 15-501 and Highway 147
- Close proximity to Duke University
- Bus line access

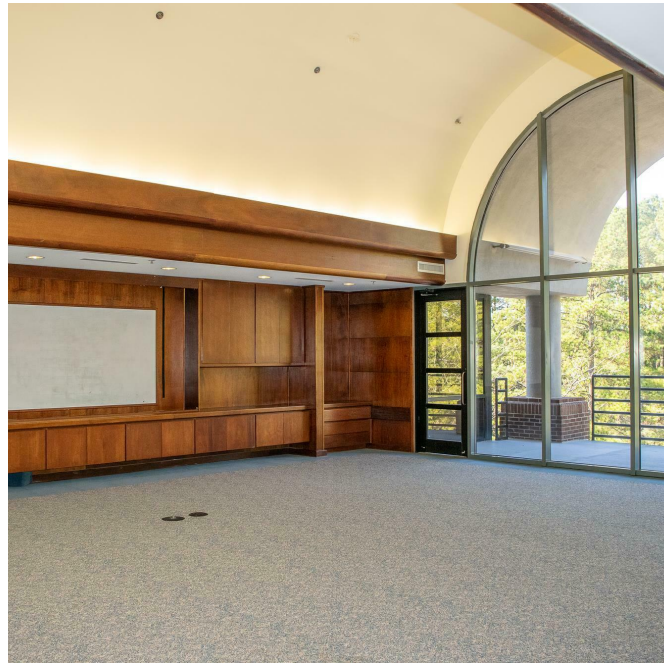
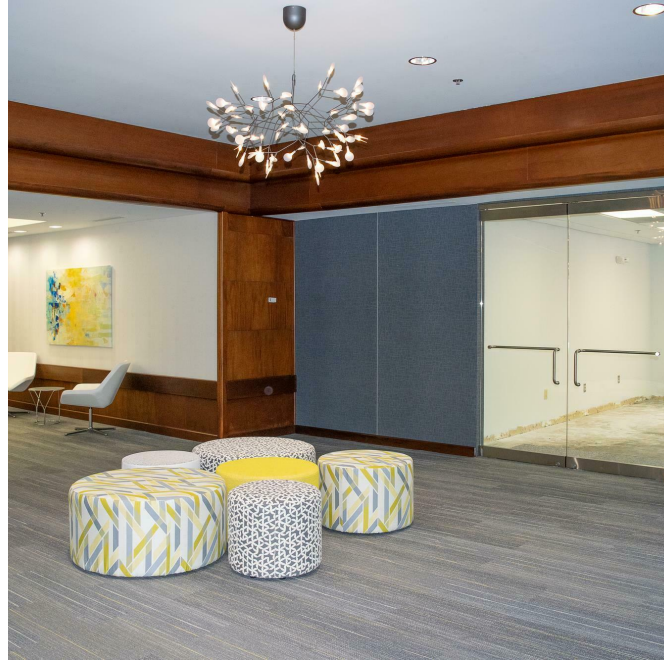
Offering Summary

Lease Rate:	\$22.00 SF/yr (Full Service)
Building Size:	66,563 SF
Available SF:	6,461 - 23,316 SF
Year Built/Renovated:	1988/2018
Land Area:	±3.5 acres
Parking:	4.00/1,000 SF

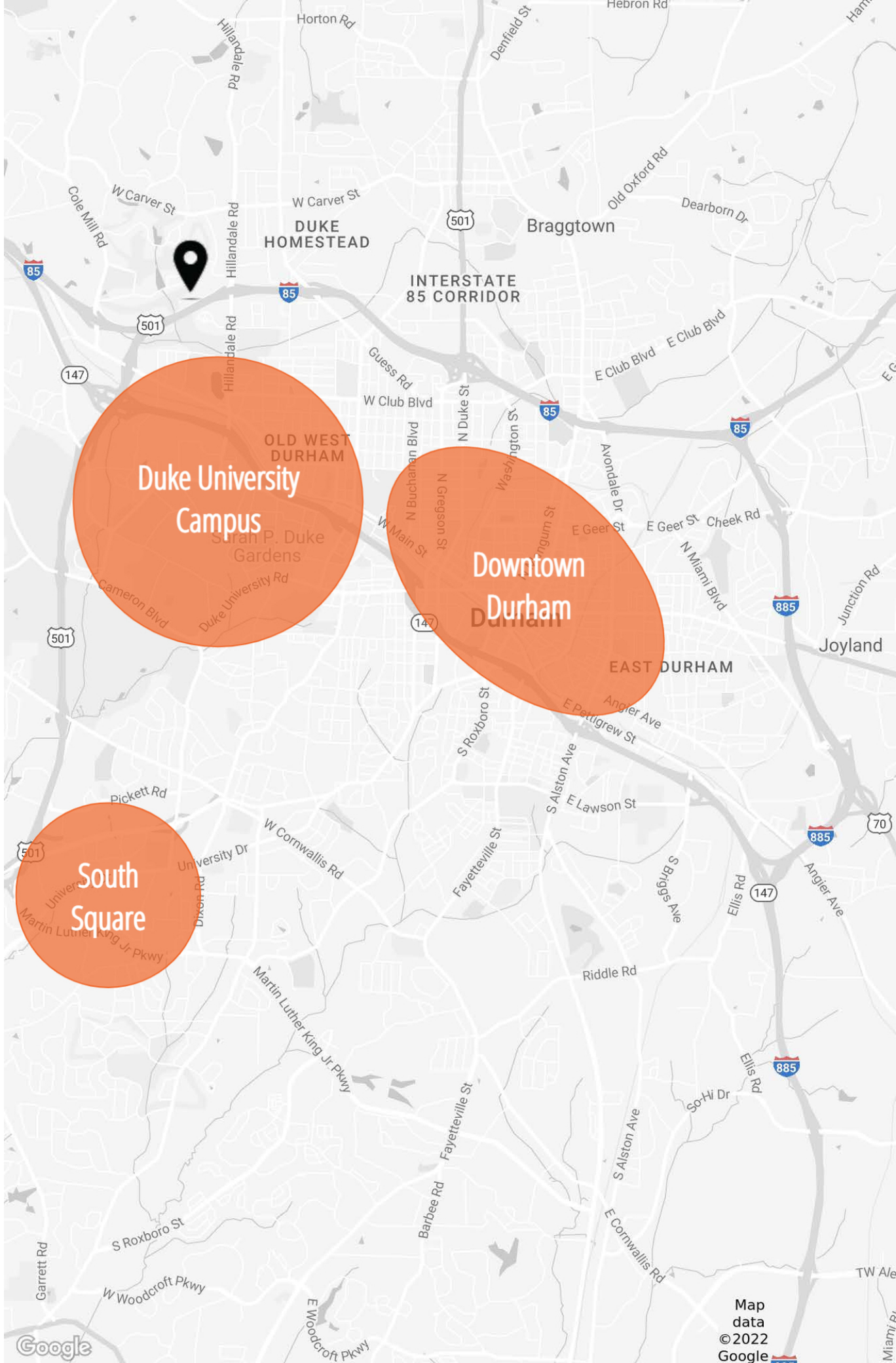




Floor Plans



Key Durham Attractions



A photograph of a modern, multi-story brick building with a curved facade. The building features large glass windows and a prominent arched entrance on the right side. The name "WATTS College of Nursing" is visible on the upper part of the building. In the foreground, there is a dark asphalt parking lot with white parking lines. The sky is a clear, deep blue.

for more information, please contact

Arnold Siegmund

Principal, Landlord Representation

D 919 420 1573

arnold.siegmund@avisonyoung.com

Carlo DiGiorgio

Senior Vice President, Office Leasing

D 919 420 1569

carlo.digiorgio@avisonyoung.com

Avison Young - Raleigh-Durham | 5440 Wade Park Boulevard, Suite 200 | Raleigh, NC 27607 | 919 785 3434

© 2024. Avison Young - Raleigh-Durham. Information contained herein was obtained from sources deemed reliable and, while thought to be correct, have not been verified. Avison Young - Raleigh-Durham does not guarantee the accuracy or completeness of the information presented, nor assumes any responsibility or liability for any errors or omissions therein.