



AVAILABLE:

2,300 SF & 11,644 SF (Can be divided into two spaces)

Join JD Sports, Snipes, Shoppers World, and others on bustling Broad St. in downtown Elizabeth, NJ.

The Christian Bollwage Parking Garage is just a few minutes' walk to the subject space located behind the subject space.

Within just 3 blocks of the subject site is Trinitas Regional Medical Center; the Elizabeth train station, which services about 3,000 passengers per day; and many regional and national retailers, and restaurants

Seeking children's apparel, medical, grocery store, variety store, and restaurant.

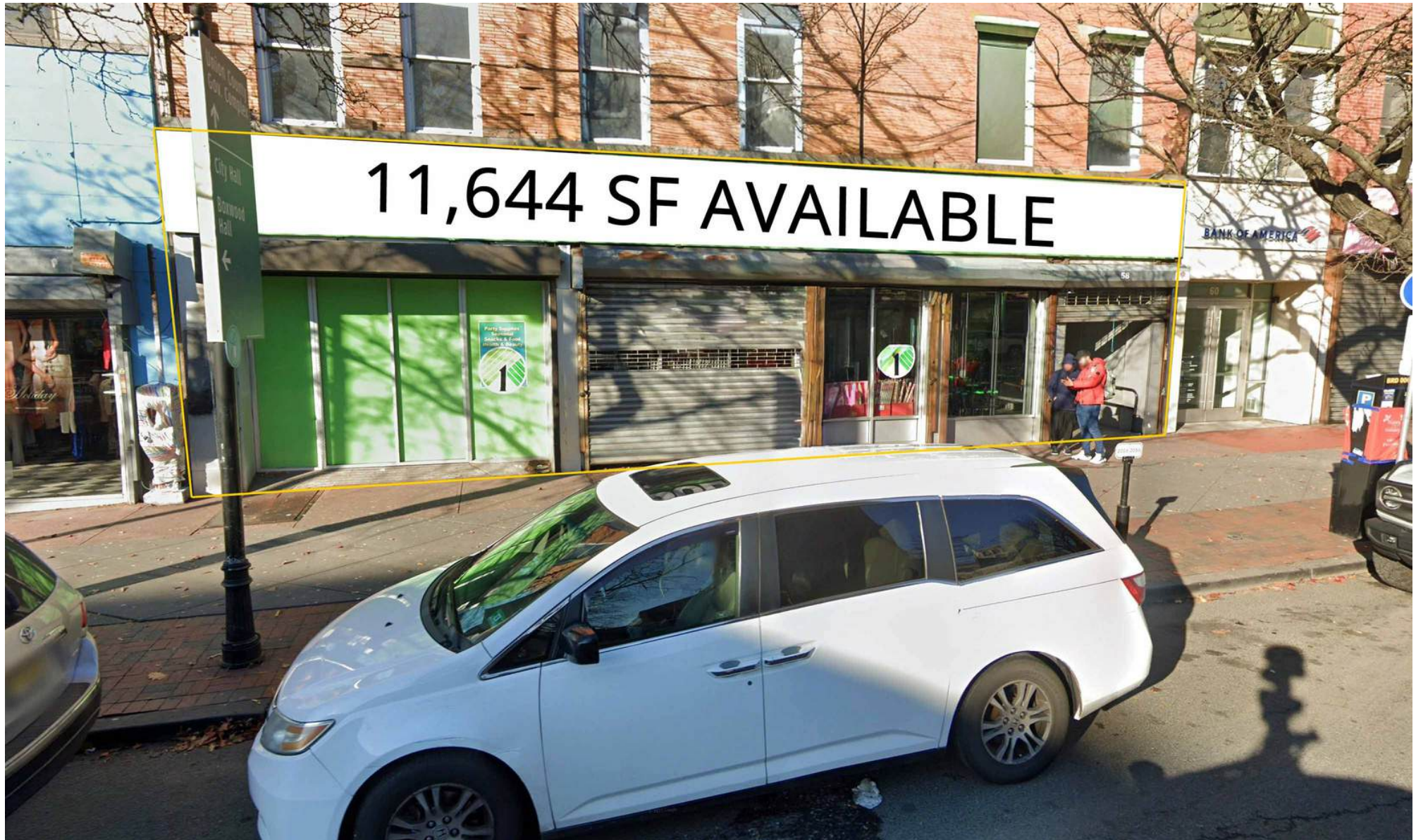
**Demographics**

	1 Mile	3 Miles	5 Miles
Population:	70,260	265,581	621,219
HH Income:	\$84,286	\$104,390	\$105,659
Daytime Pop	63,342	202,045	538,513

**Traffic Counts**

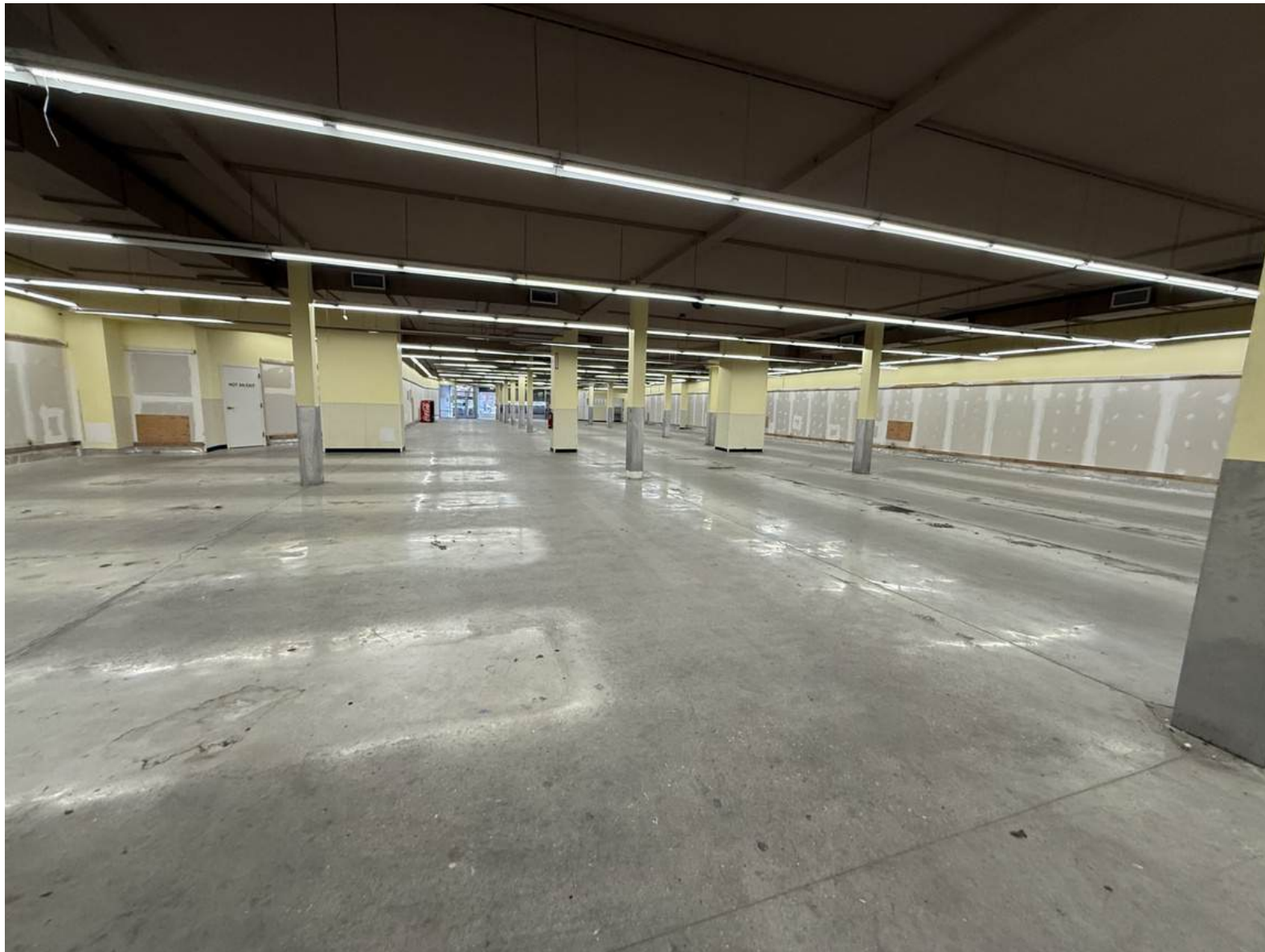
Broad St.	14,338 Cars Per Day
-----------	---------------------

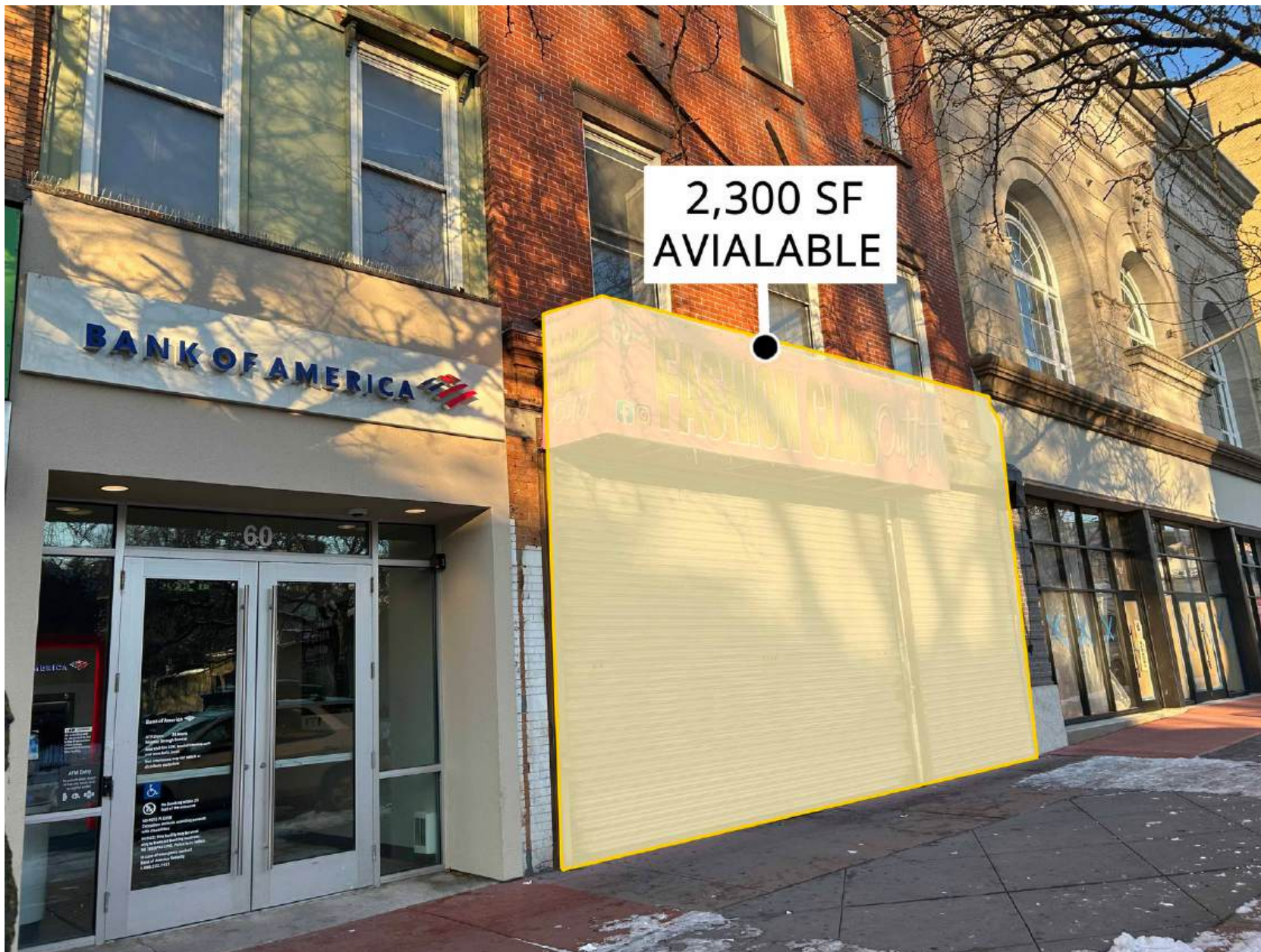






# 11,644 SF AVAILABLE



























56-64 Broad St.  
AVAILABLE FOR LEASE

## CONNECT WITH US TODAY

---



**SUSAN PREISLER**

pspreisler@rjbrunelli.com  
C: 609-790-7718



**NISSI WASSERMAN**

nwasserman@rjbrunelli.com  
C: 732-503-0717



R.J. Brunelli & Co., LLC,  
400 Perrine Rd, Ste 405 Old Bridge, NJ 08857  
732-721-5800 [www.rjbrunelli.com](http://www.rjbrunelli.com)