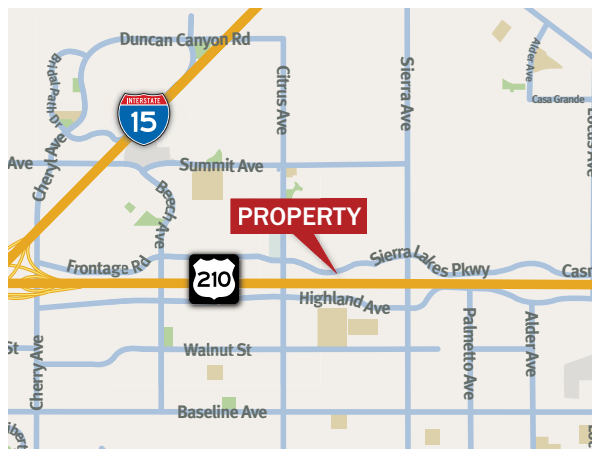


SIERRA SAN ANTONIO MEDICAL PLAZA

16465 SIERRA LAKES PKWY, Fontana, CA 93351



FOR LEASE



FOR MORE INFORMATION:

RONI GOULD

562/628-0585 rgould@ensemble.net
License #00991753

- › Conveniently located off the I-210 Freeway
- › First floor includes urgent care, diagnostic imaging, pharmacy and lab
- › Competitive lease rates
- › Generous tenant improvement allowance
- › Ample parking



ensemble.net

ENSEMBLE[®]
REAL ESTATE SOLUTIONS

SIERRA SAN ANTONIO MEDICAL PLAZA

16465 SIERRA LAKES PKWY, Fontana, CA 93351

PROPERTY SPECS

LEASE RATE \$2.10/RSF NNN

BUILDING SIZE 60,000 SF

TI'S NEGOTIABLE

PARKING 5.4/1,000 SF

SUITE 115 4,311 RSF *can be divided*

SUITE 140 2,934 RSF

SUITE 230 2,269 RSF

SUITE 265 1,845 RSF

SUITE 310 1,732 RSF

SUITE 330 2,839 RSF

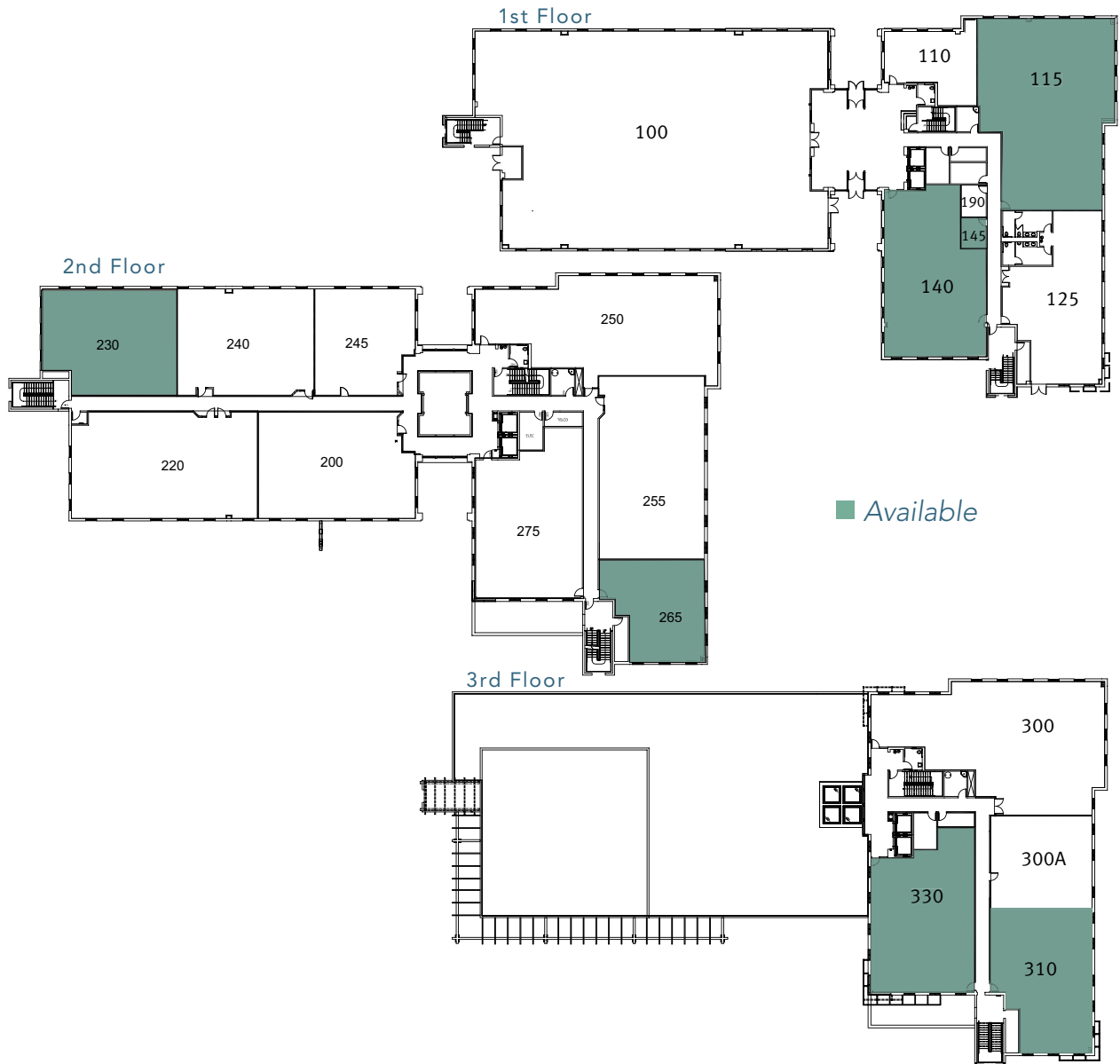


FOR MORE INFORMATION:

RONI GOULD

562/628-0585 rgould@ensemble.net

License #00991753



ensemble.net

ENSEMBLE[®]
REAL ESTATE SOLUTIONS