



Clemson Blvd. VPD 31,500  
I-85 VPD 54,400

**CLEMSON  
COMMON**

65 acres  
Power Center Retail Development

Exit 19

Site  
**M**

# 4640 CLEMSON BLVD

4640 Clemson Blvd, Anderson, SC 29621

**JOHN WRIGHT JR., CCIM**  
President  
864.934.5261  
johnjr@mccoywright.com

**JOHN RUFF**  
Vice President  
864.224.3503  
johnruff@mccoywright.com



## PROPERTY SUMMARY



## VIDEO

### PROPERTY DESCRIPTION

McCoy Wright is pleased to present the opportunity for a Ground Lease or Build-to-Suit (BTS) on this 1-acre hard corner located off Exit 19—the primary interstate interchange to Downtown Anderson and Clemson University.

This site is strategically positioned in a high-growth area of the county. It sits directly across from Clemson Commons, a 65-acre big-box development slated for its first deliveries in Q3 of 2025. Behind the site is Battery Park, a Streams Development project that delivered 252 apartments at the end of 2024. Additional retail, multifamily, and single-family residential developments will further enhance the area.

Beyond these two major projects, more than 600 single-family homes have been delivered within a two-mile radius. Other significant nearby developments include the new Anderson County School District 4 high school and the Buc-ee's gas station at Exit 21. For more information, please reach out.

### OFFERING SUMMARY

Lease Rate:	\$120,000.00 per year (NNN)
Lot Size:	1.01 Acres

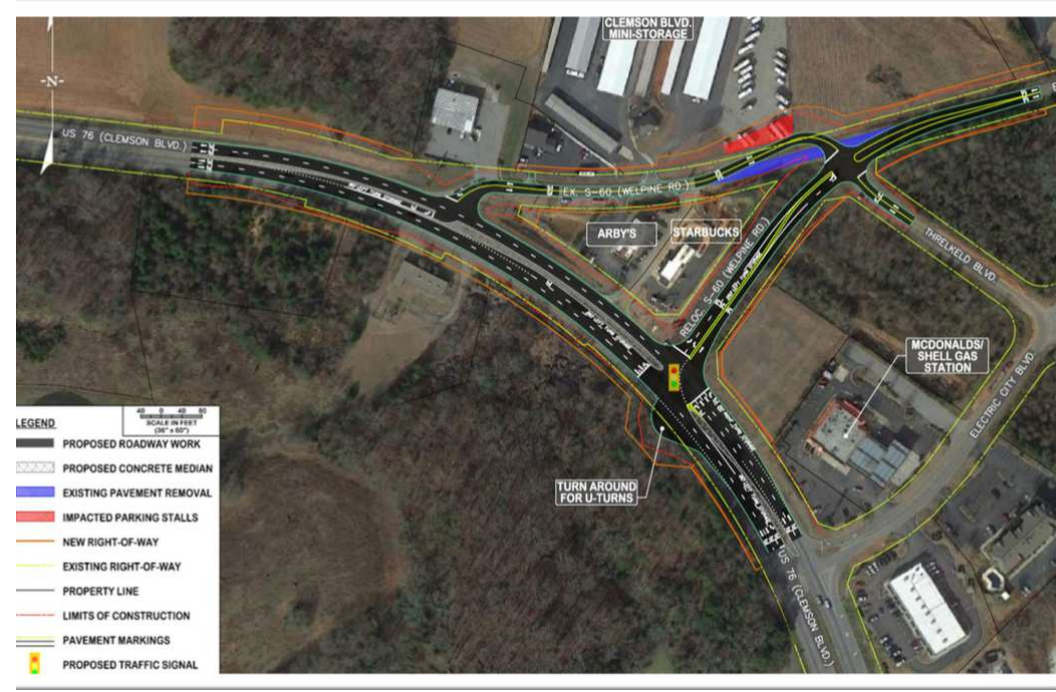
DEMOGRAPHICS	1 MILE	3 MILES	5 MILES
Total Households	303	4,716	16,985
Total Population	620	10,228	36,545
Average HH Income	\$101,855	\$71,461	\$71,369



**John Wright Jr., CCIM, President** | 864.934.5261 | johnjr@mccoywright.com

**John Ruff, Vice President** | 864.224.3503 | johnruff@mccoywright.com

ADDITIONAL PHOTOS



John Wright Jr., CCIM, President | 864.934.5261 | johnjr@mccoywright.com  
 John Ruff, Vice President | 864.224.3503 | johnruff@mccoywright.com

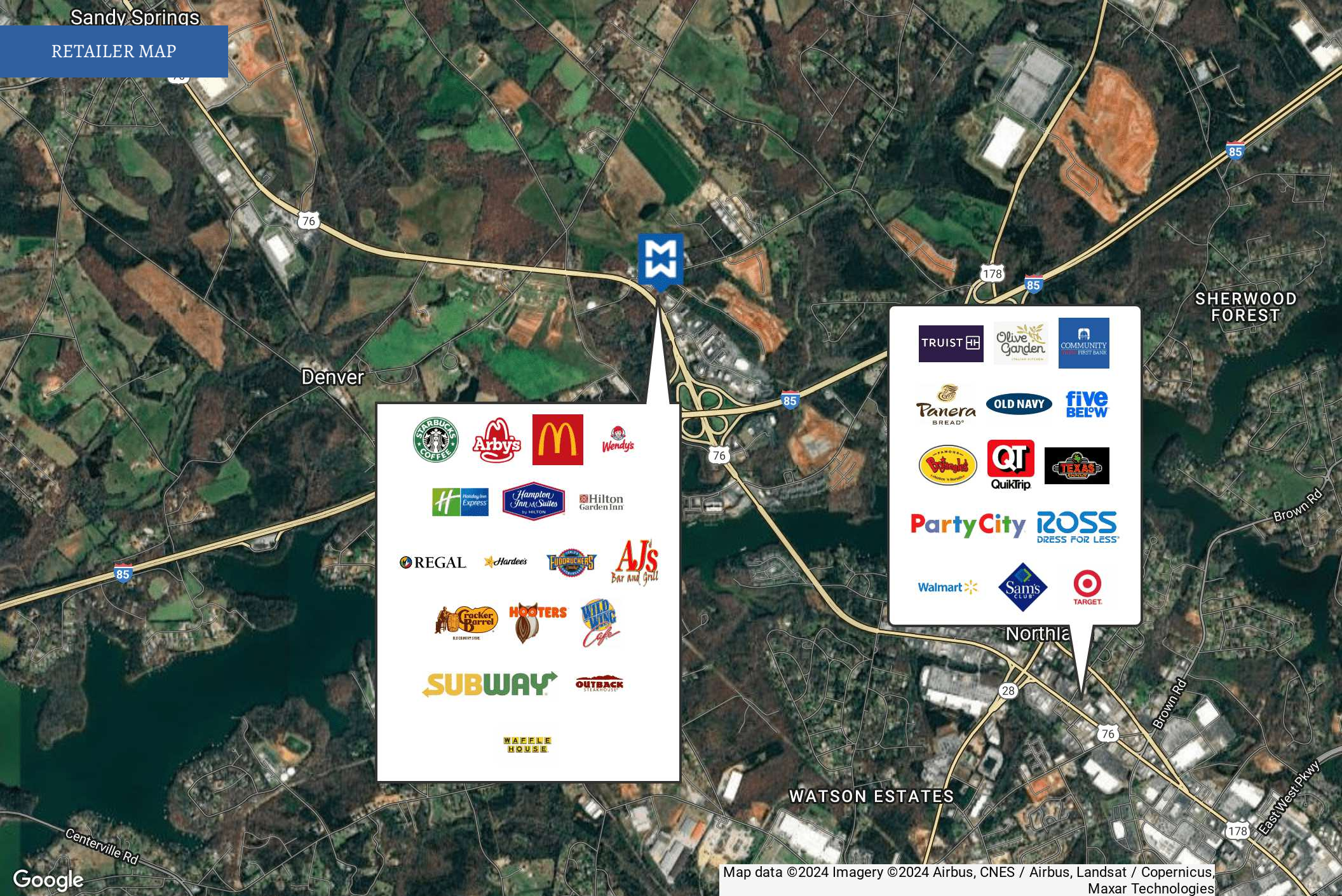


Google

Map data ©2024 Imagery ©2024 Airbus, Maxar Technologies



John Wright Jr., CCIM, President | 864.934.5261 | johnjr@mccoywright.com  
John Ruff, Vice President | 864.224.3503 | johnruff@mccoywright.com



Map data ©2024 Imagery ©2024 Airbus, CNES / Airbus, Landsat / Copernicus, Maxar Technologies



John Wright Jr., CCIM, President | 864.934.5261 | johnjr@mccoywright.com

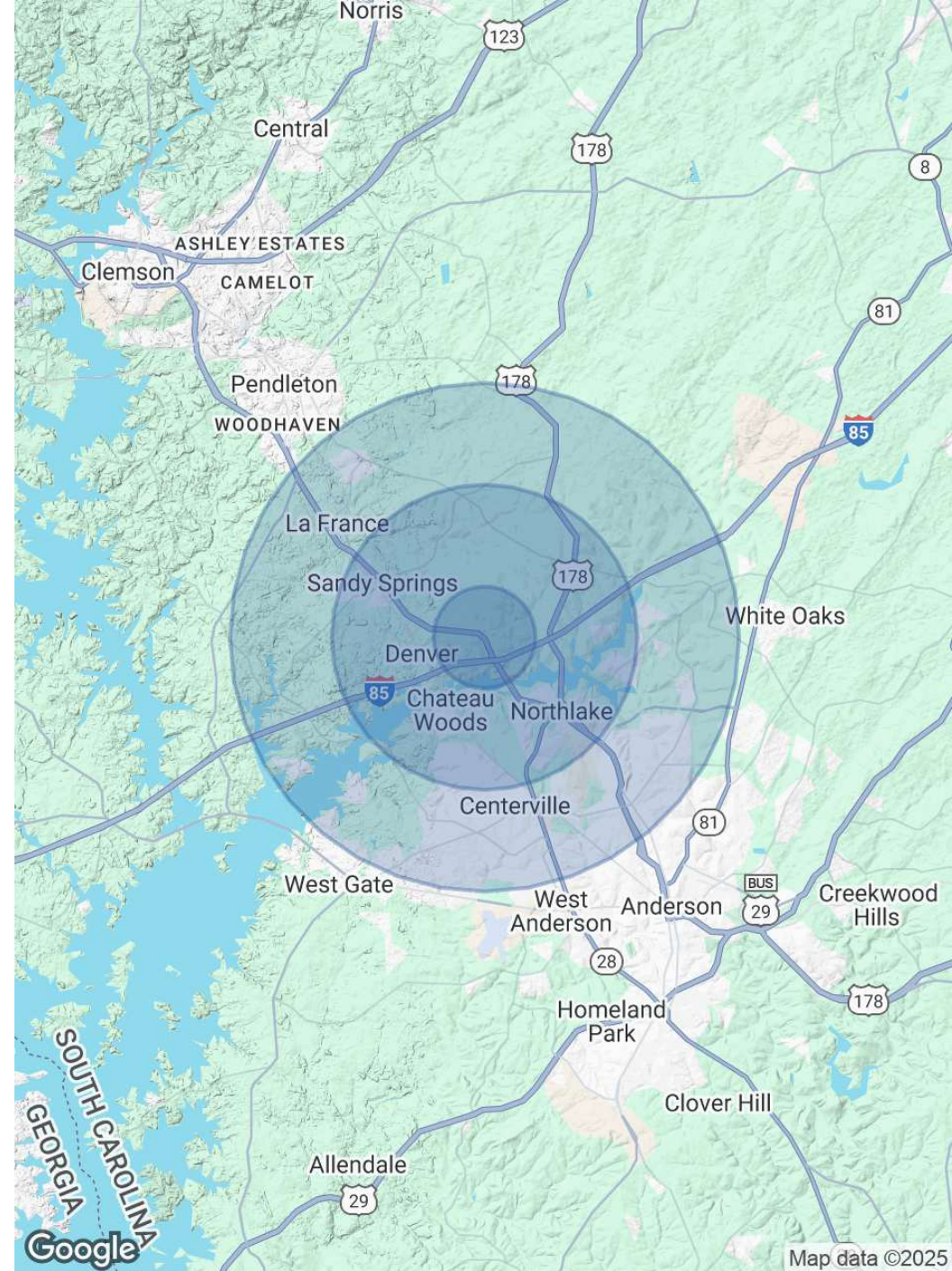
John Ruff, Vice President | 864.224.3503 | johnruff@mccoywright.com

# DEMOGRAPHICS MAP & REPORT

POPULATION	1 MILE	3 MILES	5 MILES
Total Population	620	10,228	36,545
Average Age	56.3	44.2	43.2
Average Age (Male)	58.8	45.3	42.4
Average Age (Female)	52.0	43.4	44.3

HOUSEHOLDS & INCOME	1 MILE	3 MILES	5 MILES
Total Households	303	4,716	16,985
# of Persons per HH	2.0	2.2	2.2
Average HH Income	\$101,855	\$71,461	\$71,369
Average House Value	\$212,907	\$178,325	\$175,947

2020 American Community Survey (ACS)



**John Wright Jr., CCIM, President** | 864.934.5261 | johnjr@mccoywright.com  
**John Ruff, Vice President** | 864.224.3503 | johnruff@mccoywright.com



**JOHN WRIGHT JR., CCIM**

President

**Direct:** 864.934.5261  
johnjr@mccoywright.com



**JOHN RUFF**

Vice President

**Direct:** 864.224.3503  
johnruff@mccoywright.com



**John Wright Jr., CCIM, President** | 864.934.5261 | johnjr@mccoywright.com  
**John Ruff, Vice President** | 864.224.3503 | johnruff@mccoywright.com