

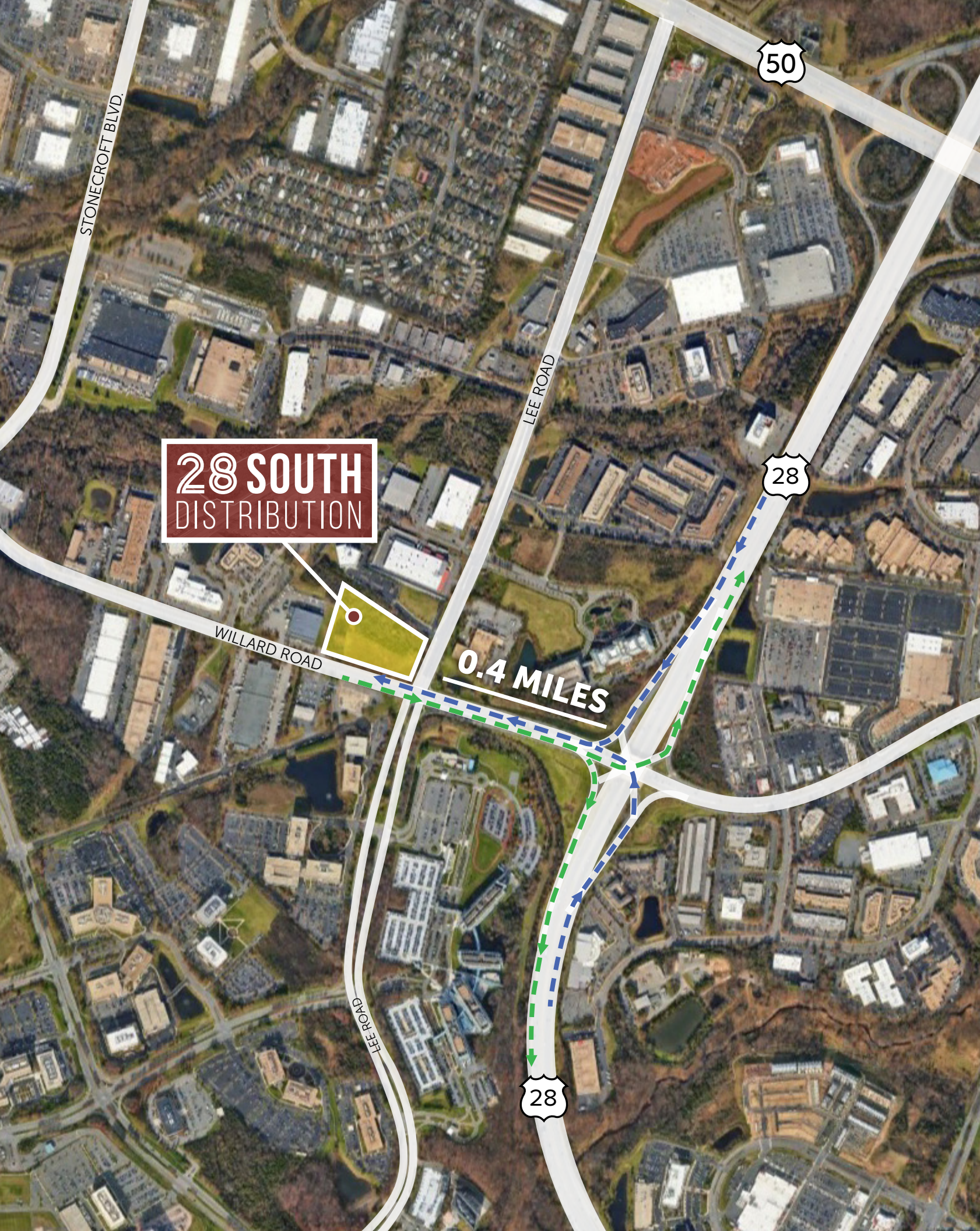
28 SOUTH DISTRIBUTION

14600 WILLARD ROAD
CHANTILLY, VA



73,540 SF INDUSTRIAL BUILDING
DELIVERING Q3 2025





PROPERTY OVERVIEW

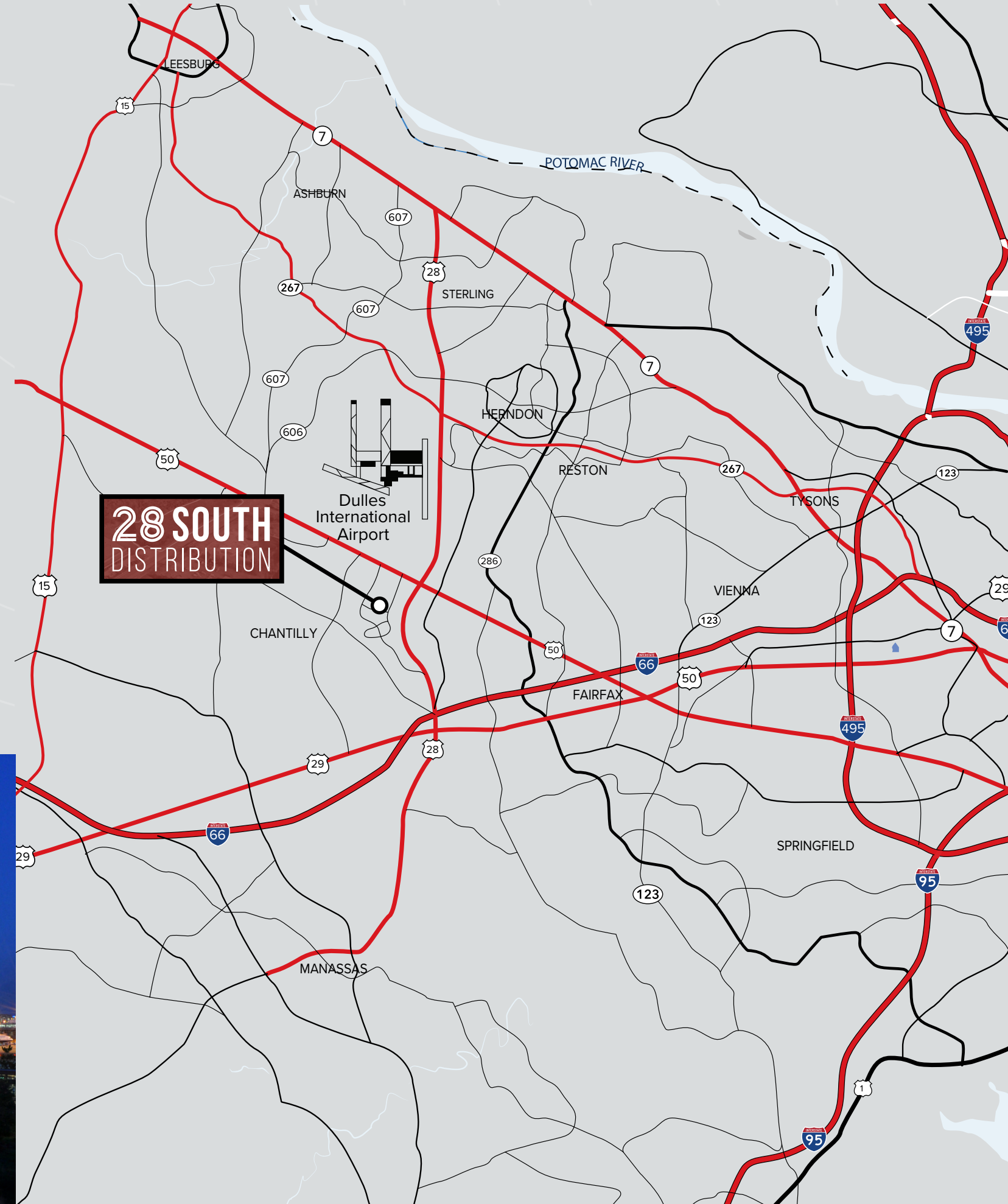
NAME	28 South Distribution
BUILDING SIZE	73,540 SF
SITE SIZE	6.95 acres
ZONING	I-5 (Fairfax County)
CLEAR HEIGHT	32'
BAY SPACING	55' x 50' or 55' x 65' Typical Bays
PARKING	1.54 / 1,000
DOCKS	20 Docks (9' x 10') with 9 additional KO's
DRIVE-INS	3 Ramped Drive-Ins (12' x 14')
BUILDING DEPTH	130' and 160'
FIRE PROTECTION	ESFR
TELECOM/FIBER	VERIZON & Comcast w/ fiber lines at property frontage
SLAB ON GRADE	7", 4,000 PSI concrete SOG
ELECTRICAL	2000 Amp, 277/480 V Dominion Power service to the building

IMMEDIATELY ACCESSIBLE

28 South Distribution offers direct and swift access to Route 28, Interstate 66, and the Dulles Toll Road ensuring easy travel. Only minutes from Washington Dulles International Airport it's ideally positioned for quick entry across Northern Virginia, providing unparalleled connectivity.

DRIVE TIMES

RT. 28	1 Mins (<1 Mile)
I-66	7 Mins (5 Miles)
IAD	10 Mins (7.5 Miles)
I-495	15 Mins (15 Miles)
I-95	20 Mins (20 Miles)
WASHINGTON, DC	30 Mins (30 Miles)
BALTIMORE	1 Hr (60 Miles)
RICHMOND	1 Hr 30 Mins (100 Miles)



NEIGHBORHOOD AMENITIES

28 South Distribution at 14600 Willard Road has direct access to a multitude of shopping centers with countless dining, retail, lodging, and fuel opportunities.



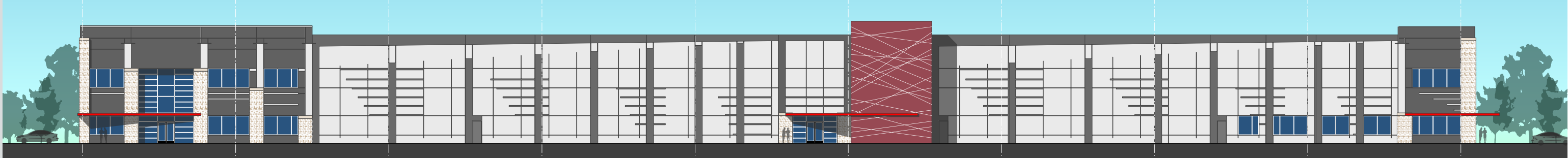
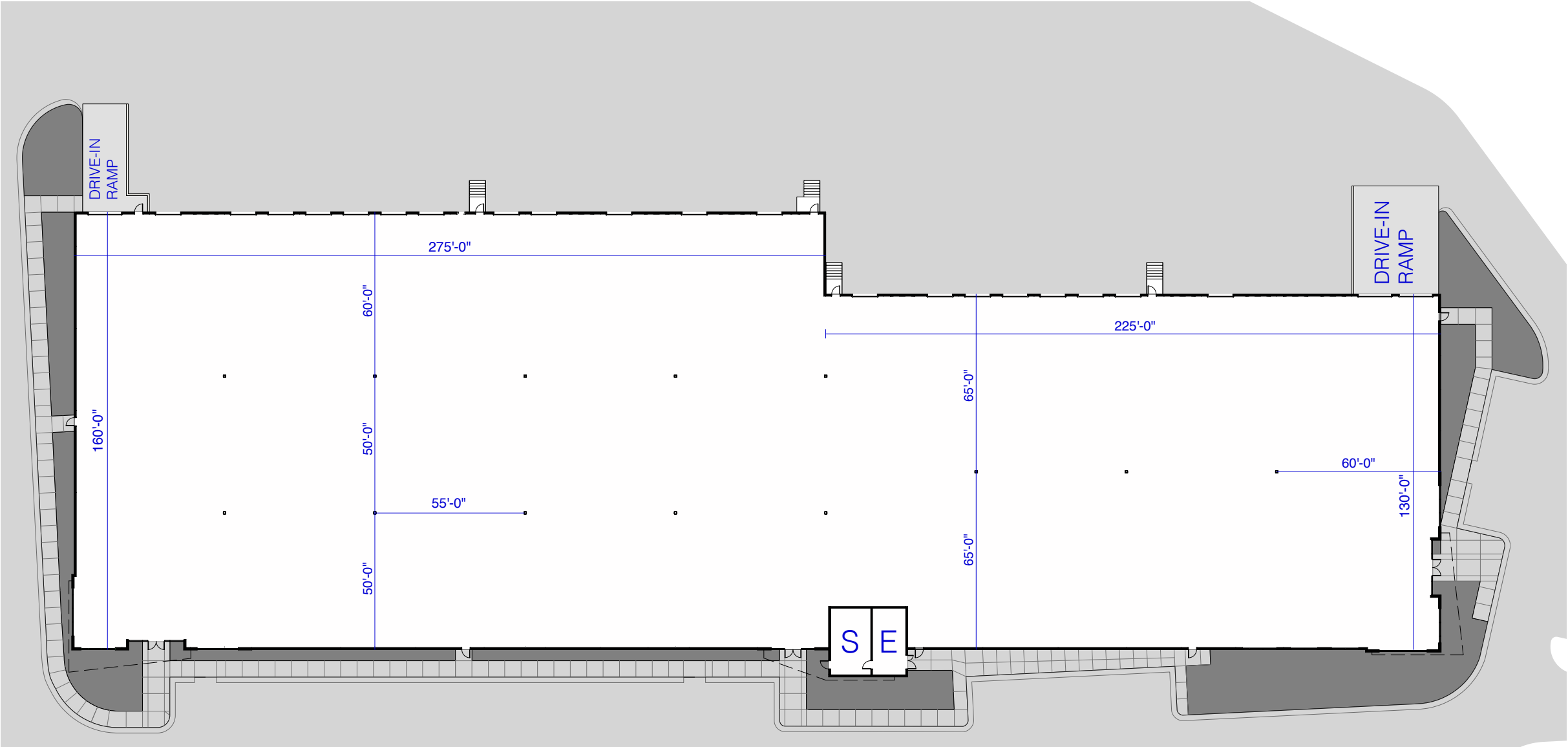
SITE PLAN

14600 WILLARD ROAD

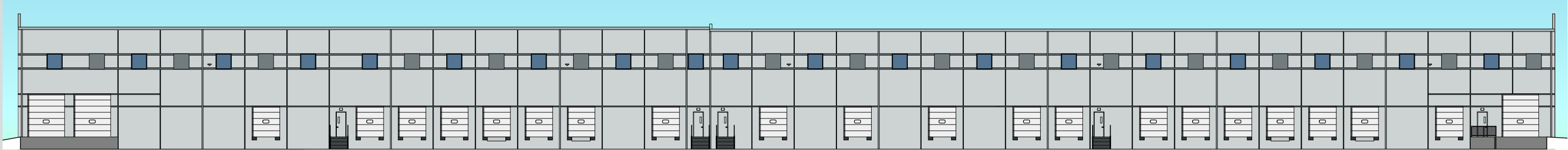


FLOOR PLAN & ELEVATIONS

14600 WILLARD ROAD



FRONT ELEVATION



REAR ELEVATION

28 SOUTH DISTRIBUTION

14600 WILLARD ROAD
CHANTILLY, VA

FOR MORE INFORMATION

Caulley Deringer

703.705.2907

caulley.deringer@streamrealty.com

Steve Cloud

703.705.2918

steve.cloud@streamrealty.com

Andrew Hassett

703.705.2921

andrew.hassett@streamrealty.com



Copyright © 2024 Stream Realty Partners, All rights reserved.

The information contained herein was obtained from sources believed reliable; however, Stream Realty Partners, L.P. make no guarantees, warranties, or representations as to the completeness or accuracy thereof. The presentation of this property is submitted subject to errors, change of price, or conditions, prior sale or lease, or withdrawal without notice.