

FOR SALE

136.5 ACRES

READY TO DEVELOP
WILL SUBDIVIDE!

US 90 AT GRAND PARKWAY



PROPERTY DETAILS

LOCATION

East side of Stilson Road, south of US 90
Dayton, TX

ROADS

Stilson Road with 2,724' of frontage, a concrete heavy haul road under construction, to be complete January 2024 and to be signalized at US 90.

SIZE

±136.5 AC, will consider subdividing

ALSO AVAILABLE

+/- 38.9 AC, rail served

TAX RATE

\$2.434571 / \$100

PRICING

Call Brokers

FEATURES

- Excellent, ready to develop site for warehousing, distribution, or manufacturing
- Off-site detention
- Water and sanitary sewer from City of Dayton adjacent to site
- Enhanced citywide access near Grand Parkway
- Not in 100-year floodplain
- Greenfield site, transloading available at adjacent Gulf Inland Logistics Park

JOHN F. LITTMAN, SIOR
M: +1 713 410 4818
D: +1 713 963 2862
john.littman@cushwake.com

B. KELLEY PARKER III, SIOR
M: +1 713 825 2222
D: +1 713 963 2896
kelly.parker@cushwake.com

COE PARKER, SIOR
M: +1 713 594 4252
D: +1 713 963 2825
coe.parker@cushwake.com

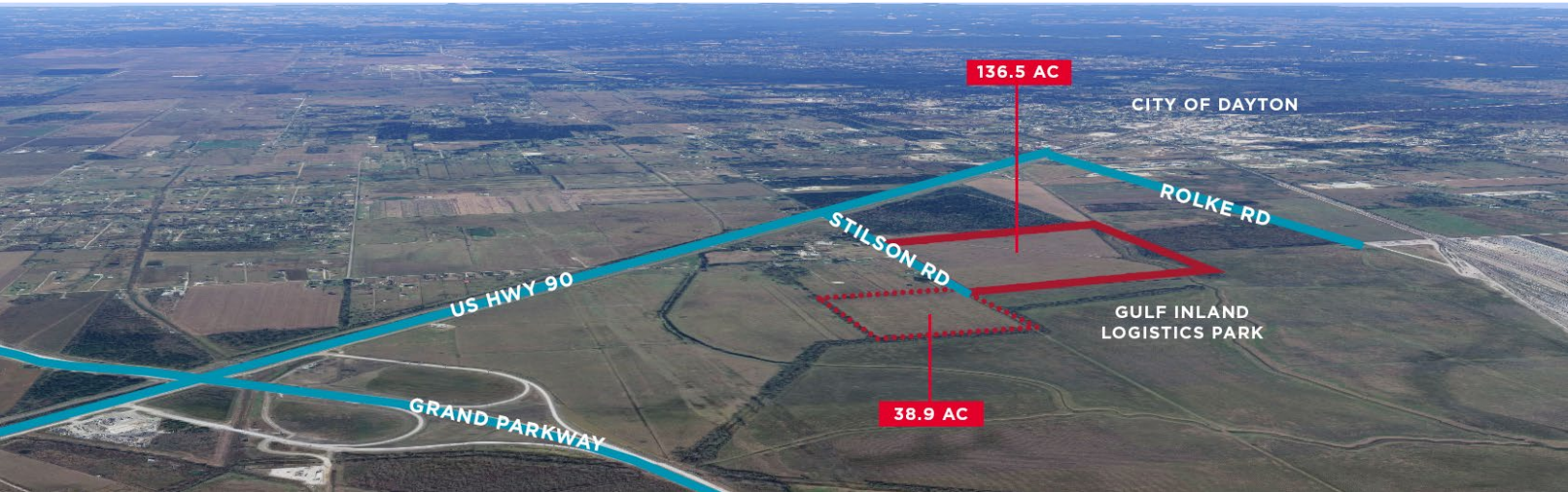
 **CUSHMAN & WAKEFIELD**
cushmanwakefield.com

FOR SALE

136.5 ACRES

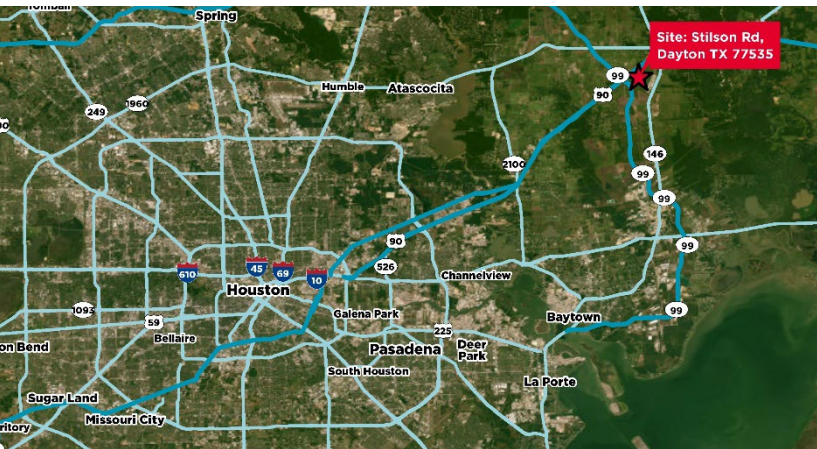
READY TO DEVELOP
WILL SUBDIVIDE!

US 90 AT GRAND PARKWAY



LINKS

- [Dayton Economic Development](#)
- [Gulf Inland Logistics Park](#)
- [Port Houston](#)
- [City of Dayton](#)
- [Energy](#)
- [Flood Plain Map](#)
- [Topographical Map](#)
- [Zoning Map](#)
- [Survey](#)
- [Citywide Location Map](#)
- [Site Map](#)



JOHN F. LITTMAN, SIOR
 M: +1 713 410 4818
 D: +1 713 963 2862
john.littman@cushwake.com

B. KELLEY PARKER III, SIOR
 M: +1 713 825 2222
 D: +1 713 963 2896
kelley.parker@cushwake.com

COE PARKER, SIOR
 M: +1 713 594 4252
 D: +1 713 963 2825
coe.parker@cushwake.com

CUSHMAN & WAKEFIELD
cushmanwakefield.com