



## OFFICE FOR LEASE

*7,763 SF Available*

**460 Buffalo Road,  
Rochester, NY 14611**

Located in the front eastern corner of the complex, this office space offers high visibility and a dedicated entrance. The space is lined with private offices and an open office space. Plentiful surface parking and easy access to I-490.

## PROPERTY

*highlights*

- ✓ High Visibility
- ✓ Dedicated Entrance
- ✓ Surface Level Parking
- ✓ Easy Access to I-490



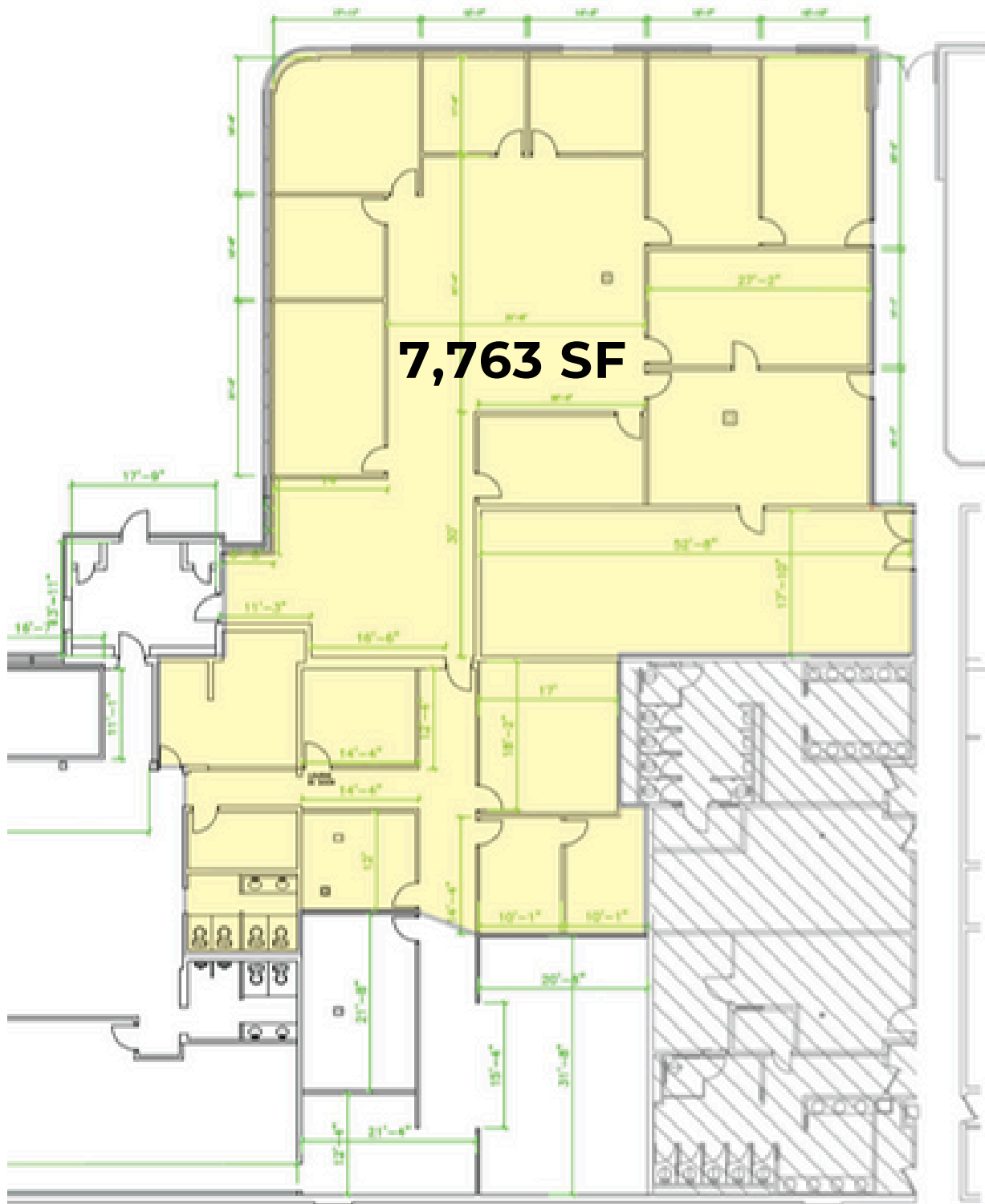
**BUCKINGHAM  
PROPERTIES**



**ADAM BORRELL**

*Senior Leasing Executive*

(585) 615-3593 | [aborrell@buckprop.com](mailto:aborrell@buckprop.com)



**BUCKINGHAM**  
PROPERTIES



**ADAM BORRELL**

*Senior Leasing Executive*

(585) 615-3593 | [aborrell@buckprop.com](mailto:aborrell@buckprop.com)