

22 West 23rd Street

BETWEEN 5TH AND 6TH AVENUES



SUMMIT RE
P A R T N E R S

New Sublease
Area: 4,300 RSF
Term: 1-3 Years

- ☐ **Duplex with Private Outdoor Terrace**
- ☐ **New Build-Out**
- ☐ **Plug N' Play**
- ☐ **Furniture Included**
- ☐ **Half Block from Madison Square Park**

Summit RE Partners, as exclusive agent, is pleased to offer the following prime space for sublease:

DETAILS: 5th Floor + PH | 4,300 RSF

Possession | April 2026

Term | 1-3 Years



Summit RE Partners, as exclusive agent, is pleased to offer the following prime space for sublease:

DETAILS: 5th Floor + PH | 4,300 RSF

Possession | April 2026

Term | 1-3 Years



Summit RE Partners, as exclusive agent, is pleased to offer the following prime space for sublease:

DETAILS: 5th Floor + PH | 4,300 RSF

Possession | April 2026

Term | 1-3 Years



Summit RE Partners, as exclusive agent, is pleased to offer the following prime space for sublease:

Location & Access

BETWEEN 5TH AND 6TH AVENUES

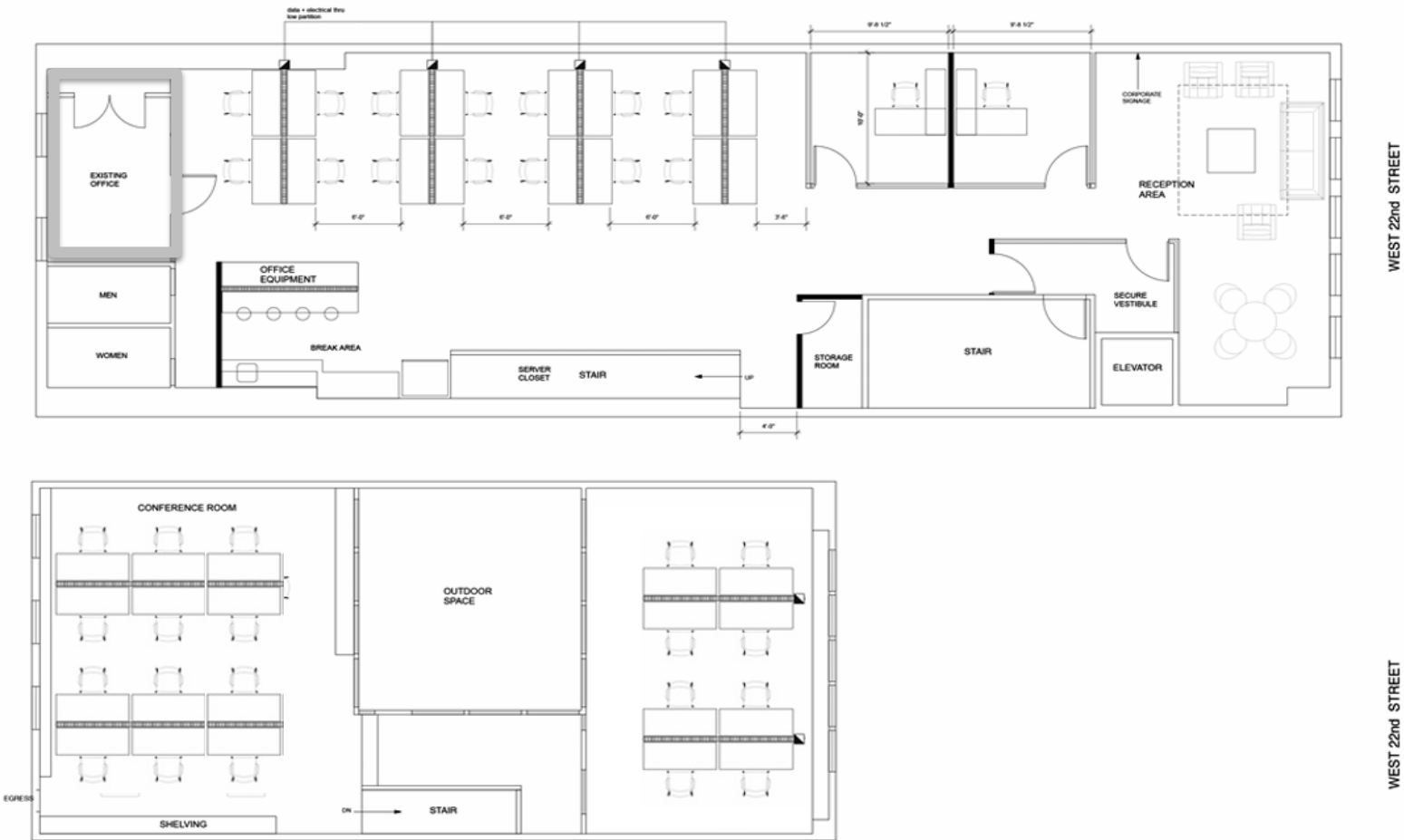


- ❑ Steps from Madison Square Park
- ❑ Half Block from 23rd Street Station (F/M/N/Q/R/W & PATH)
- ❑ 1 Block to 6 Train at 23rd Street
- ❑ Convenient to Union Square / Flatiron
- ❑ Excellent Food & Amenities (Eataly, Original Shake Shack)

FLOOR PLAN

5th Floor + PH 4,300 RSF

**Retained by Tenant*



**New Sublease
Area: 4,300 RSF
Term: 1-3 Years**

- ☐ **Duplex with Private Outdoor Terrace**
- ☐ **New Build-Out**
- ☐ **Plug N' Play**
- ☐ **Furniture Included**
- ☐ **Half Block from Madison Square Park**



CONTACT:

Dennis Coppin

+ 1 347 601 0567

denniscoppin@trysummitpartners.com

SUMMIT RE
P A R T N E R S

Daniel Hassett

+ 1 917 612 3664

dhassett@summitrepartners.com

