

SMALL OFFICE SPACE FOR LEASE

10330-10340 Pleasant St. | Noblesville, IN 46060



Office Space Within Flex Building Minutes From I-69 and I-465 in Vibrant Noblesville

| | |
|-----------------------|--|
| Available: | Bldg. 10340, Suite 400 - 2,088 SF Office Space |
| Lease Rate: | \$16.00 PSF, Net of Janitorial and Utilities |
| Building Size: | Two 9,900 SF buildings on the property. |
| Parking: | 50 Spaces |
| Land: | 2.17 Acres |

Building Details:

Industrial flex space buildings featuring 4" concrete floors, drive-in accessibility, and 200amp electrical service.

[VIEW PROPERTY ONLINE](#)



NAI Cressy

P 317.875.8888 | CRESSY.COM | CONNECT WITH US! [in](#) [X](#) [f](#) [YouTube](#)

3502 Woodview Trace, Suite 250, Indianapolis, IN 46268

Cressy Commercial Real Estate is a Minority Business Enterprise (MBE) as well as certified by the National Native American Supplier Council (NNASC).



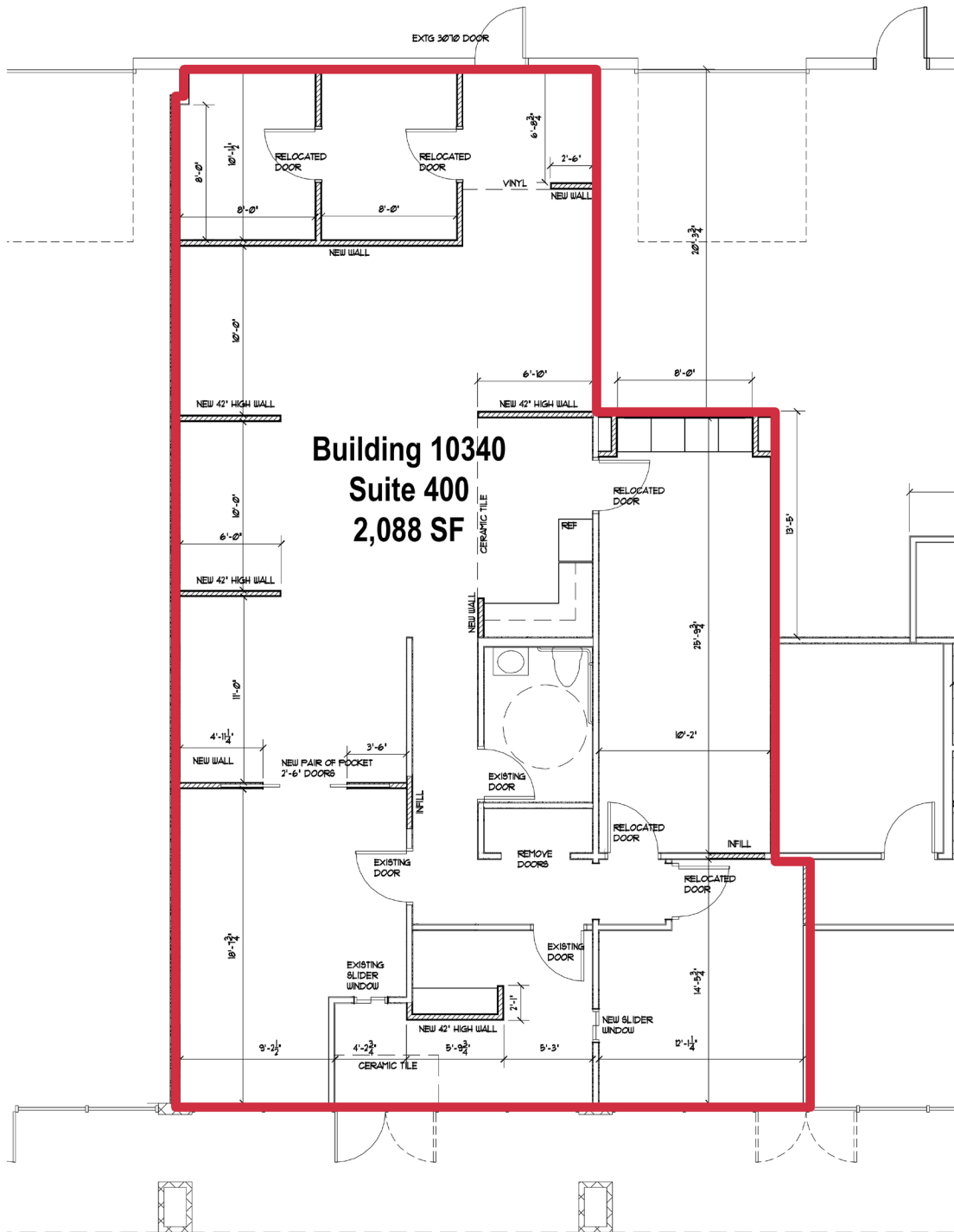
Information furnished regarding property for sale, rental or financing is from sources deemed reliable. But no warranty or representation is made as to the accuracy thereof and same is submitted subject to errors, omissions, change of price, rental or other conditions, prior sale, leased, financing or withdrawal without notice. No liability of any kind is to be imposed on the broker herein. NAI Cressy is the Global Brokerage Division of Cressy Commercial Real Estate.

Andrew Follman, CCIM
Market President

D 317.566.5614 | afollman@cressy.com

Jack Whitlock
Broker

D 317.997.5952 | jwhitlock@cressy.com



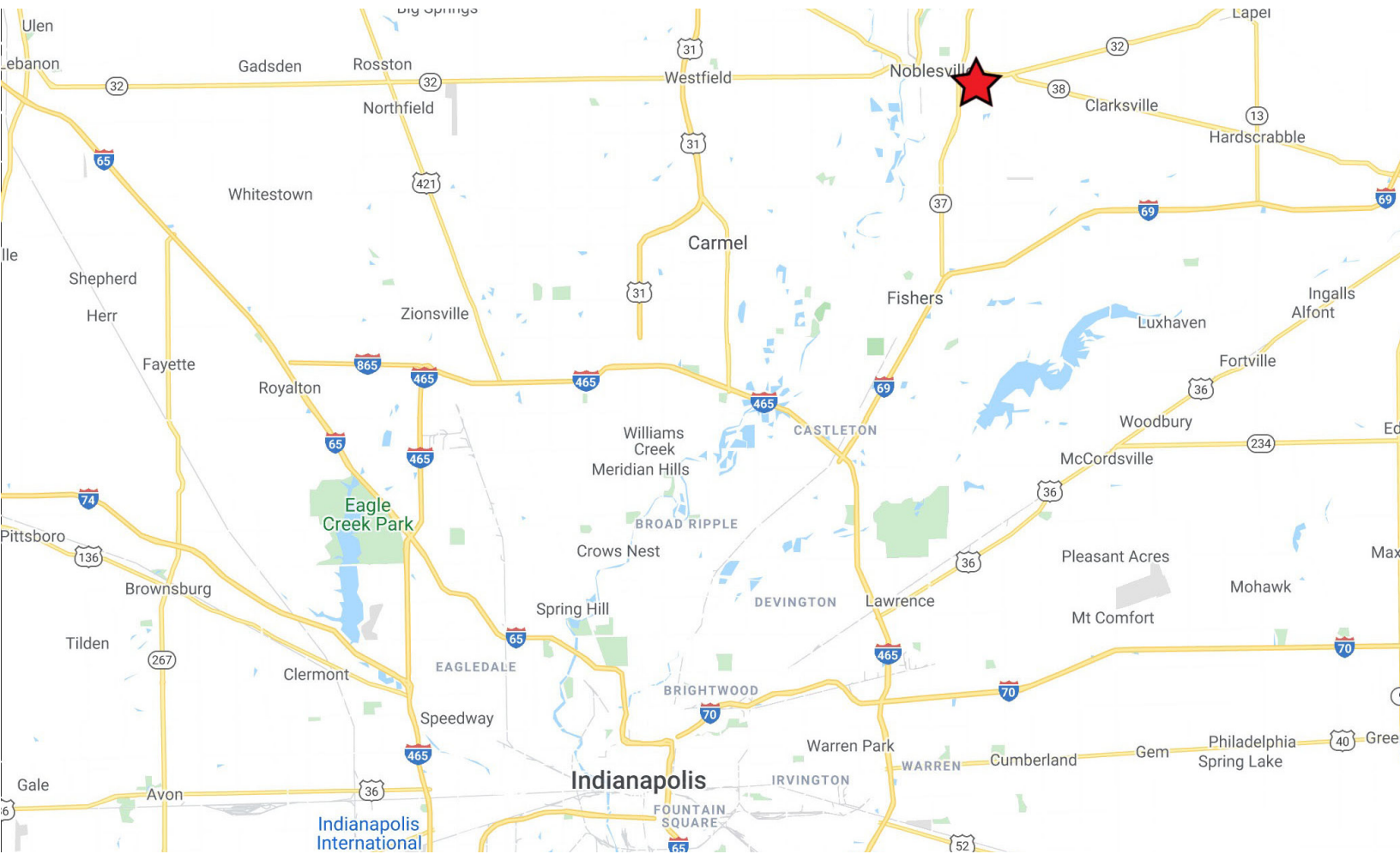
ARCHITECTURAL FLOOR PLAN

SCALE: 1/4" = 1'-0"

LOCATION OVERVIEW

SMALL OFFICE SPACE FOR LEASE

10330-10340 Pleasant St. | Noblesville, IN 46060



- Located East of Highway 37 on Pleasant St. in Noblesville, just northeast of Indianapolis.
- Minutes from Interstate 69, Interstate 465, and Downtown Noblesville.
- Surrounded by local and national commercial, industrial, and retail businesses.



NAI Cressy is the Global Brokerage Division of Cressy Commercial Real Estate.

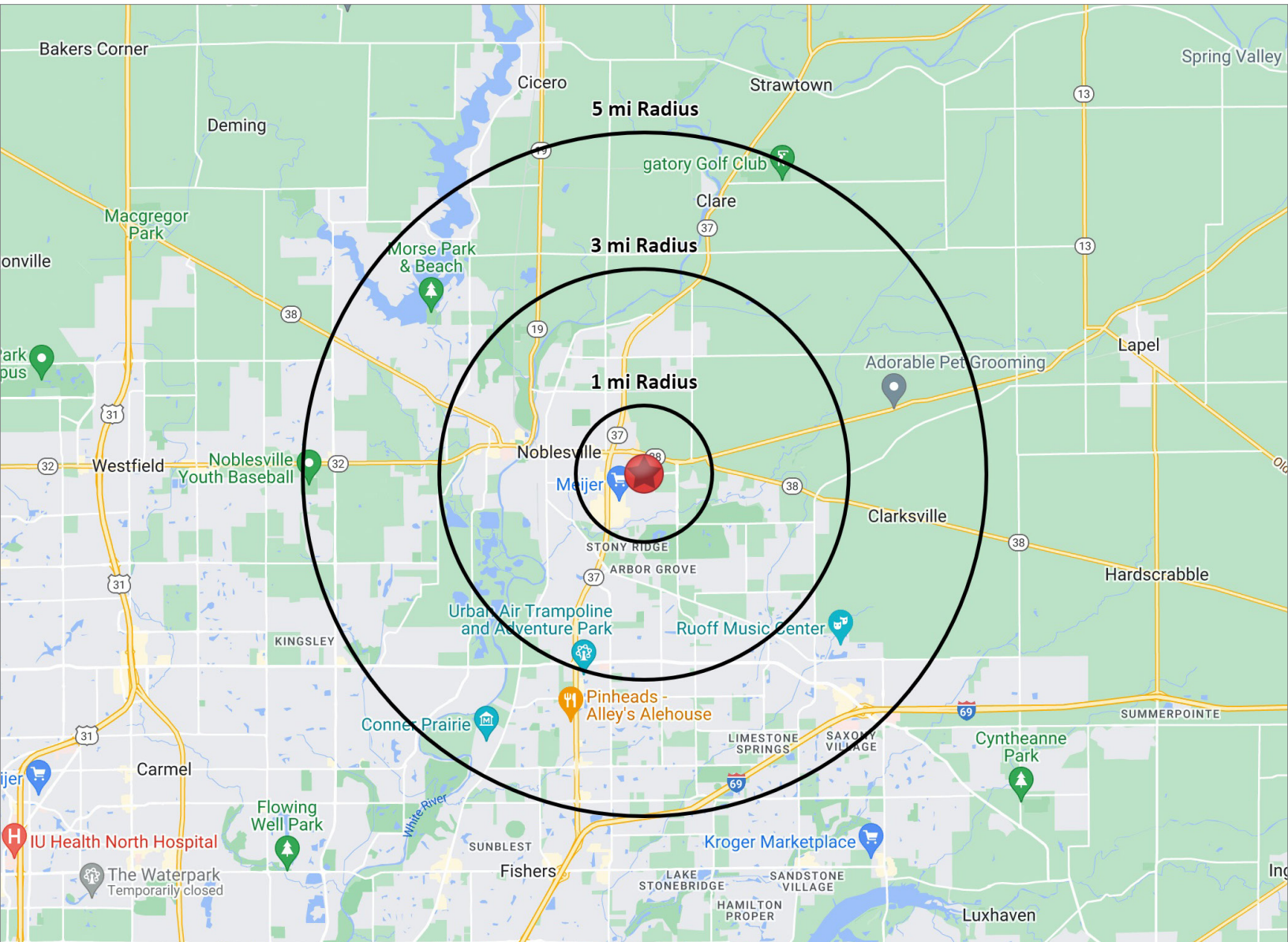
Andrew Follman, CCIM
Market President
D 317.566.5614
afollman@cressy.com

Jack Whitlock
Broker
D 317.997.5952
jwhitlock@cressy.com

2025 DEMOGRAPHICS

SMALL OFFICE SPACE FOR LEASE

10330-10340 Pleasant St. | Noblesville, IN 46060



POPULATION

| | |
|--------|---------|
| 1 MILE | 4,119 |
| 3 MILE | 42,401 |
| 5 MILE | 102,511 |



NUMBER OF HOUSEHOLDS

| | |
|--------|--------|
| 1 MILE | 1,641 |
| 3 MILE | 16,295 |
| 5 MILE | 38,520 |



AVERAGE HOUSEHOLD INCOME

| | |
|--------|-----------|
| 1 MILE | \$161,843 |
| 3 MILE | \$136,945 |
| 5 MILE | \$144,397 |



MEDIAN HOME VALUE

| | |
|--------|---------|
| 1 MILE | 434,177 |
| 3 MILE | 346,678 |
| 5 MILE | 366,065 |



is the Global Brokerage Division of Cressy Commercial Real Estate.

Andrew Follman, CCIM
Market President
D 317.566.5614
afollman@cressy.com

Jack Whitlock
Broker
D 317.997.5952
jwhitlock@cressy.com