

2606 Southwest Pky

2606 Southwest Pky, Wichita Falls, TX 76308



Presented by
Schaaf & Clark



Price: \$2,345,000

The tract was formerly a church location so its set up with all utilities and some parking lot lighting. The tract is level and set up for easy development with all utilities on site. 5.37 AC lot can be sub divided. Priced at \$10.00/sqft.

2606 Southwest Pky

2606 Southwest Pky, Wichita Falls, TX 76308



The tract was formerly a church location so its set up with all utilities and some parking lot lighting. The tract is level and set up for easy development with all utilities on site. 5.37 AC lot can be sub divided. Priced at \$10.00/sqft.



Rodd Womble

rbwomble@wfdomain.com

(940) 733-2279

Schaaf & Clark

2601 Harrison, Suite 200

Wichita Falls, TX 76308



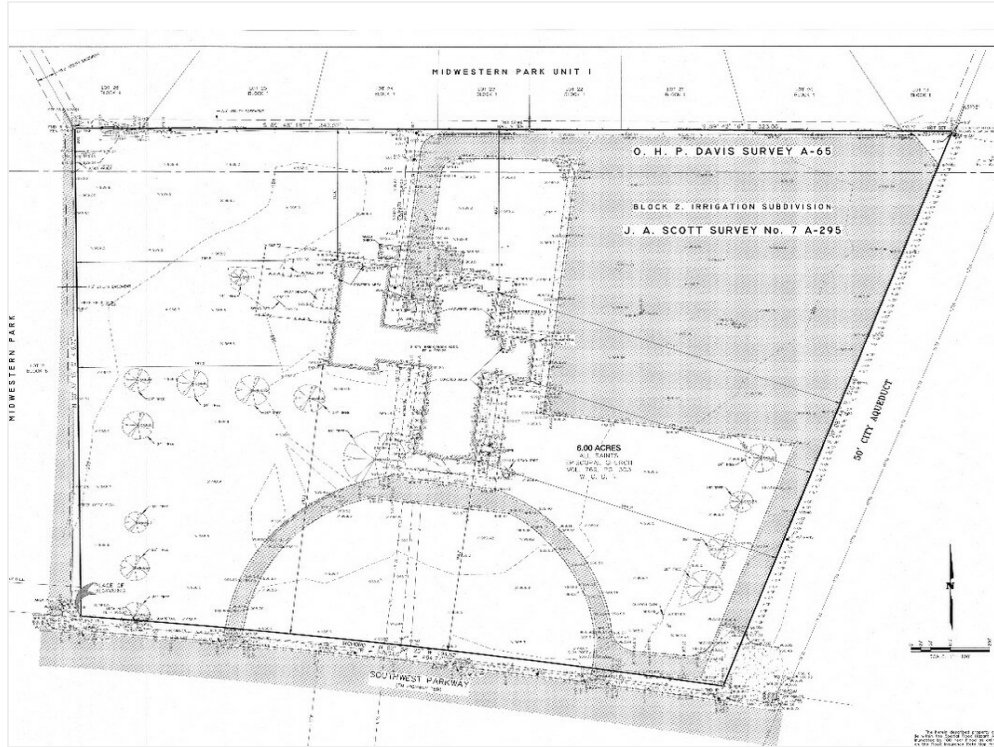
2606 Southwest Pky

2606 Southwest Pky, Wichita Falls, TX 76308

2606 Southwest Pky

2606 Southwest Pky, Wichita Falls, TX 76308

Property Photos



Screenshot_20230523_103630_File Manager



2606 SWPKW

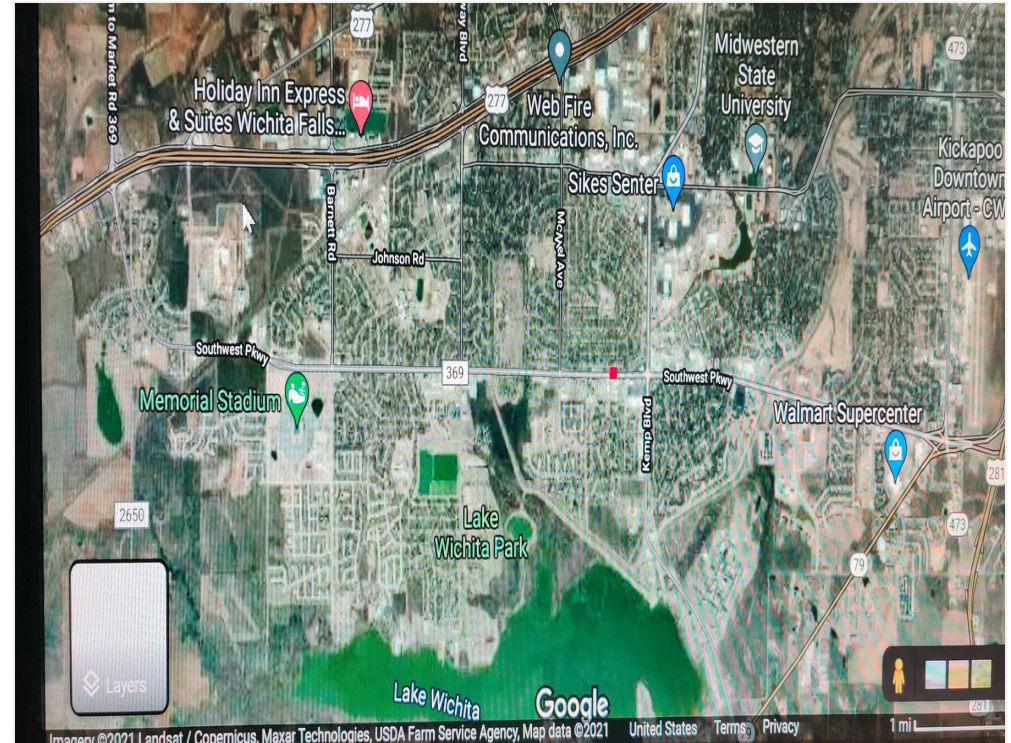
2606 Southwest Pky

2606 Southwest Pky, Wichita Falls, TX 76308

Property Photos



22222



IMG99

2606 Southwest Pky

2606 Southwest Pky, Wichita Falls, TX 76308

Location

