

4388

N CIVIC CENTER PLAZA  
SCOTTSDALE, AZ 85251

FOR LEASE



## GROUND FLOOR OFFICE SPACE IN OLD TOWN

 [CLICK SUITE TO VIEW FLOOR PLAN](#)

LEASE RATE

Suite 101: \$30.00/SF MG

\*Tenant responsible for Janitorial and Electric

AVAILABLE

Suite 101: ±1,000 SF

BUILDING SIZE

±2,500 SF

### PROPERTY FEATURES

- New Carpet
- Fresh Paint
- Updated Ceiling Tiles
- 3 Reserved Parking Spaces + Street Parking
- LVT Flooring

**SUITE 101**



**DENTIST/SALON/MEDICAL SPACE**

Liam Floyd, Junior Advisor  
lfloyd@levrose.com  
480.223.9354

Jason Reddington, Partner  
jreddington@levrose.com  
480.289.4504

**LEVROSE**  
COMMERCIAL REAL ESTATE

TCN  
COMMERCIAL REAL ESTATE SERVICES

This information has been secured from sources believed to be reliable, but no representations or warranties are made, expressed or implied, as to the accuracy of the information. References to square footage are approximate. Buyer and tenant must verify the information and bears all risk for any inaccuracies. All quoted prices are subject to change without notice.

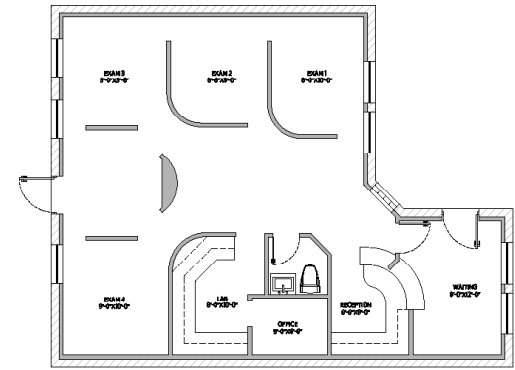


4388

N CIVIC CENTER PLAZA  
SCOTTSDALE, AZ 85251

FOR LEASE

GROUND FLOOR OFFICE/RETAIL SPACE



SUITE 101 FLOOR PLAN

CLICK TO VIEW



Jason Reddington, Partner  
jreddington@levrose.com  
480.289.4504

Keri Davies, Partner  
kdavies@levrose.com  
480.294.6572

LEVROSE  
COMMERCIAL REAL ESTATE

