

OFFICE SPACE FOR LEASE

1251 N PLUM GROVE RD, SCHAUMBURG, IL

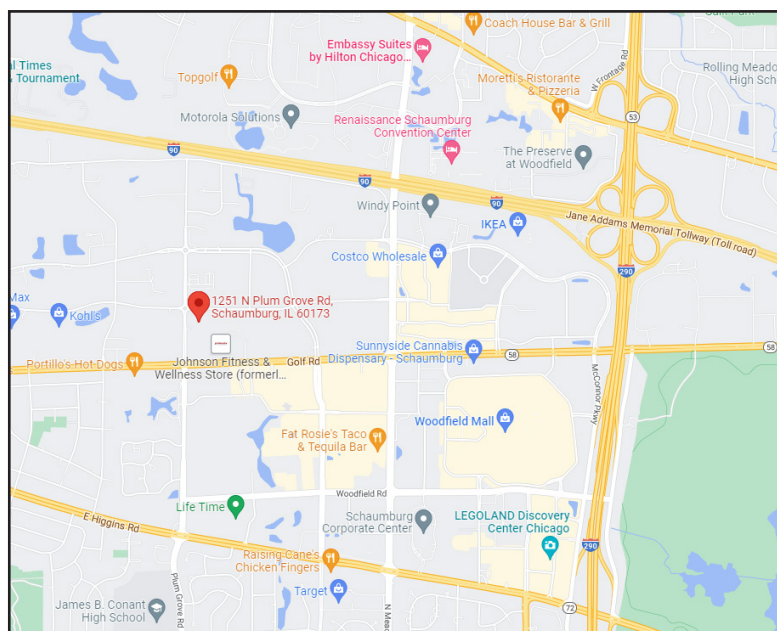


BUILDING FEATURES:

- 100 - 4,916 SF Available
- Ample Parking
- Tenant controlled HVAC
- Hotels, Shopping and Dining nearby
- Convenient Tollway Access
- Comcast high-speed internet available
- Onsite Ownership and Management
- Beautiful Courtyard and Ornamental Landscaping
- **Rental Rate: \$11.50 - \$13.50 Modified Gross**

AVAILABLE SPACE:

SUITE	SIZE	CONTIGUOUS/DETAILS
130-K*	225 RSF	Interior Office \$400 Per Month
130-L*	225 RSF	Interior Office \$400 per Month
*Suites include all utilities & Wi-Fi Access!!!!		
170	4,916	Open Office Area w/ great window line & large conference room



FOR MORE INFORMATION:

RANDY OLCZYK
 Direct: 847.246.9611
 randy@chicagolandcommercial.com

RAY OKIGAWA
 Direct: 847.246.9632
 ray@chicagolandcommercial.com

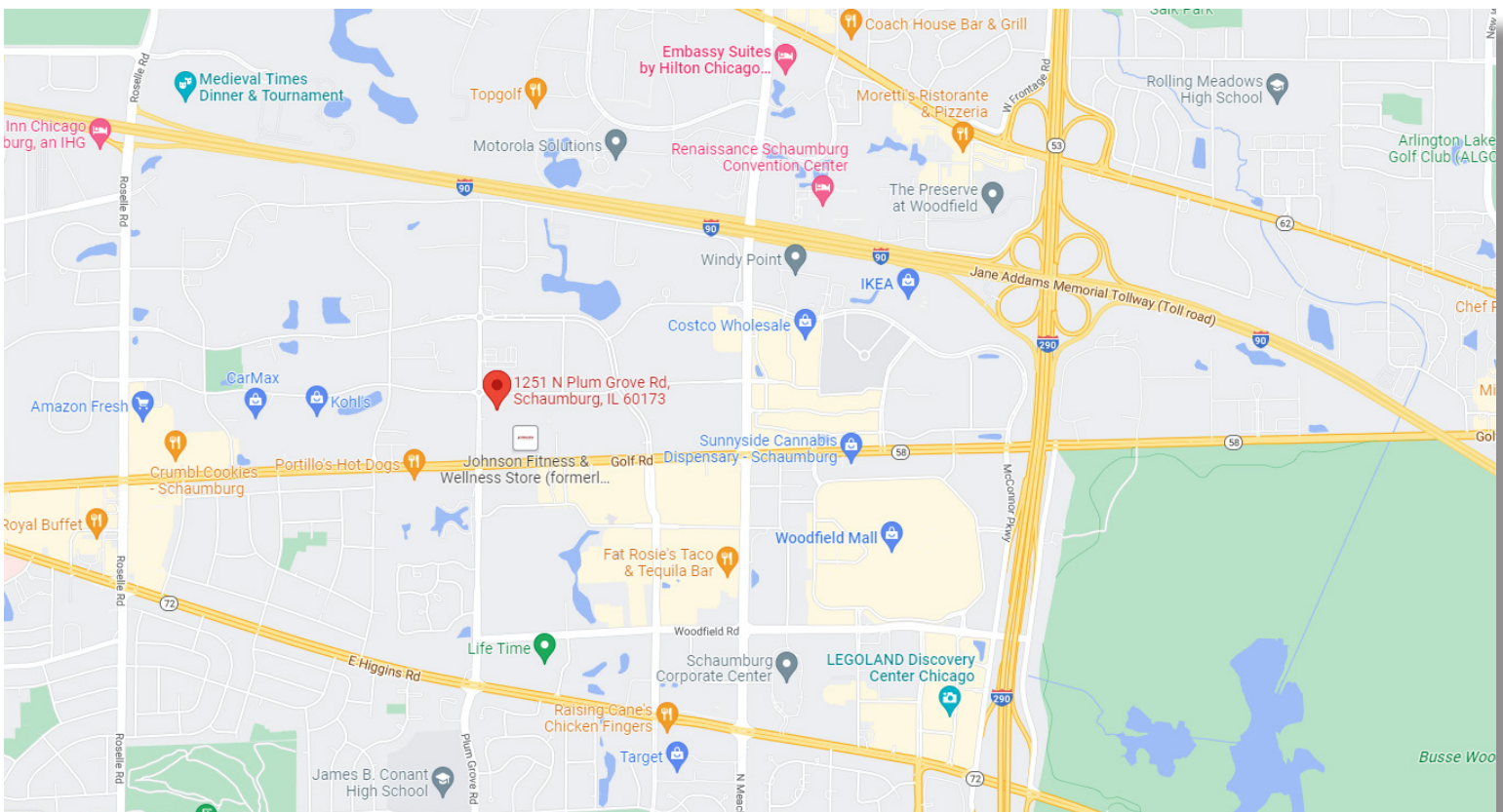
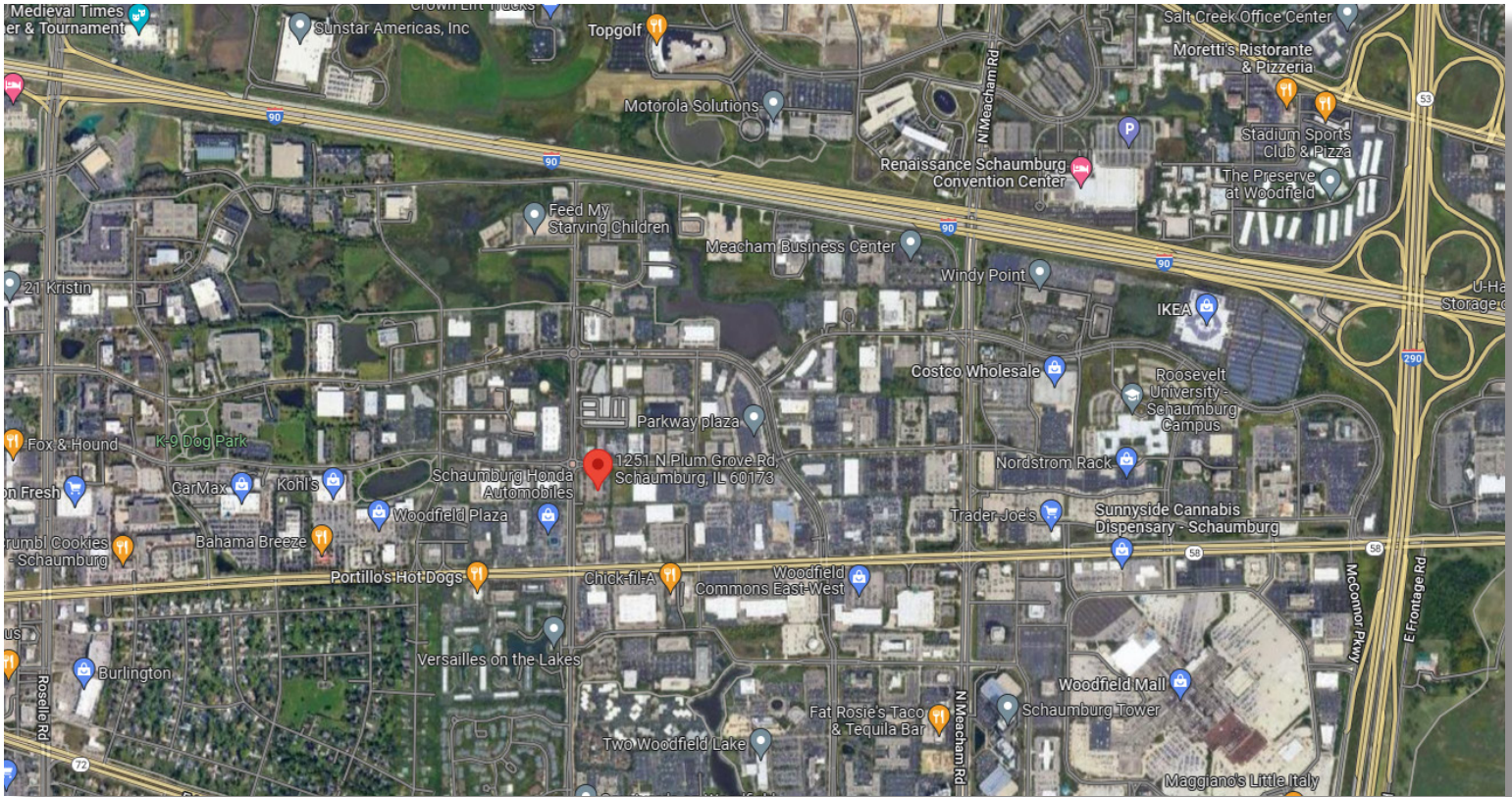


4811 Emerson-Suite 112, Palatine, IL 60067

OFFICE SPACE FOR LEASE

1251 N PLUM GROVE RD, SCHAUMBURG, IL

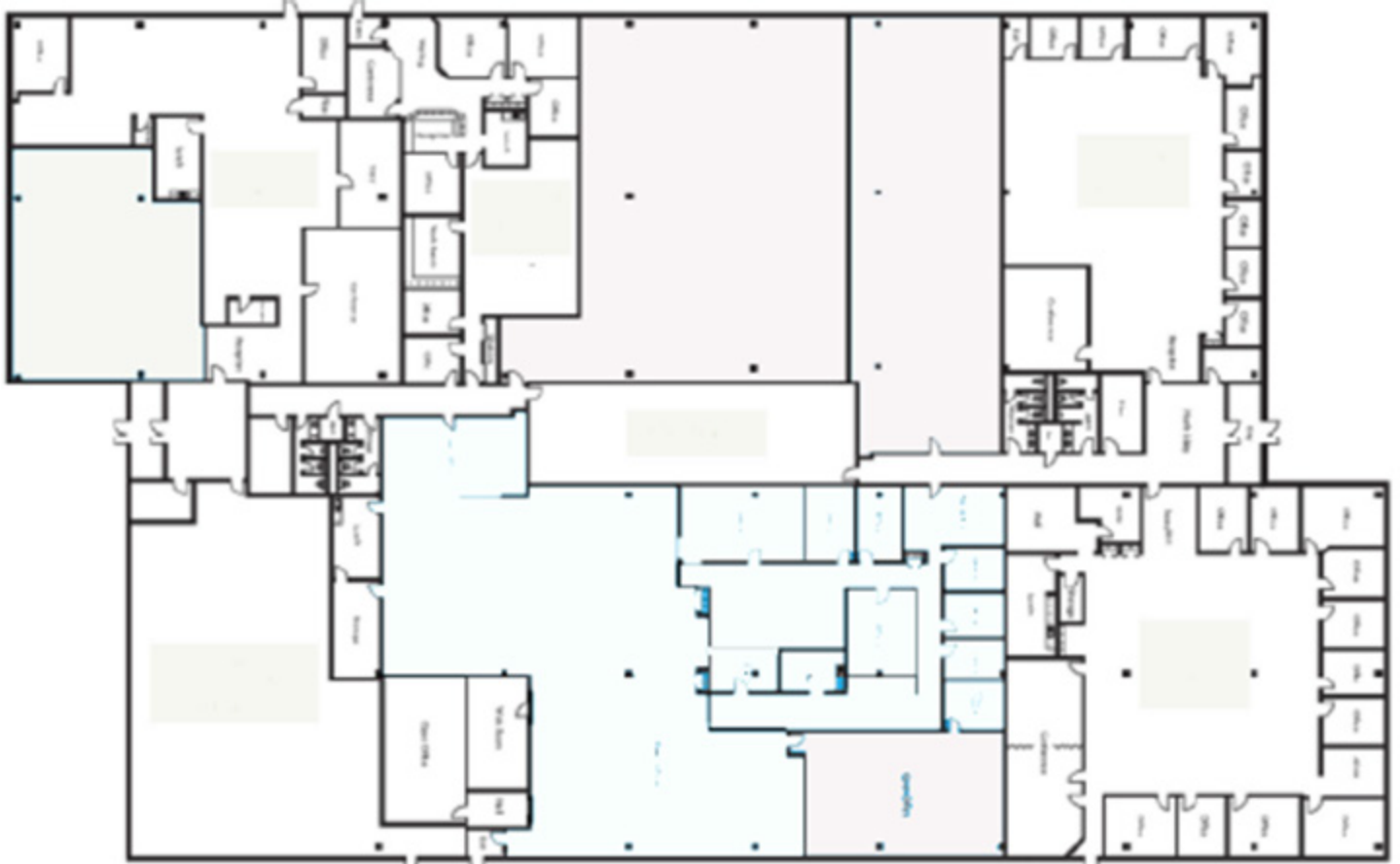
AREA MAPS



OFFICE SPACE FOR LEASE

1251 N PLUM GROVE RD, SCHAUMBURG, IL

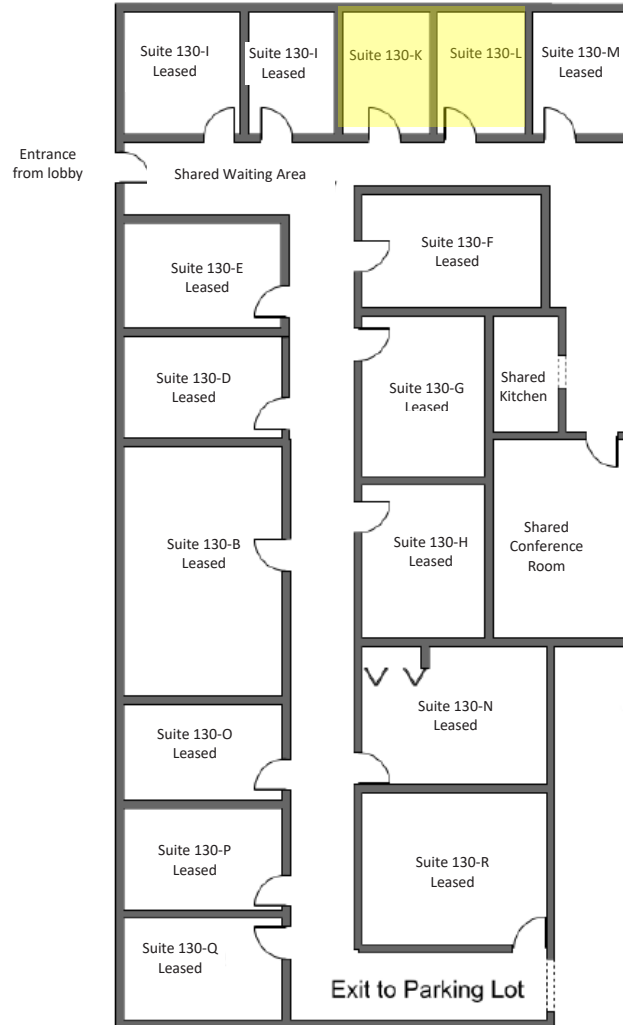
SITE PLAN



OFFICE SPACE FOR LEASE

1251 N PLUM GROVE RD, SCHAUMBURG, IL

FLOOR PLAN - SUITES 130 MINISUITES



Suite	Dimensions	Approximate Usable SF	Monthly Rent	Window
130-K	8'-9" x 11'-1"	100	\$400	no
130-L	8'-9" x 11'-1"	100	\$400	no

WiFi available for \$35 per month

Monthly Rent includes heating, cooling, & electricity.

*Rentable SF includes common areas including kitchen, conference room, & reception areas

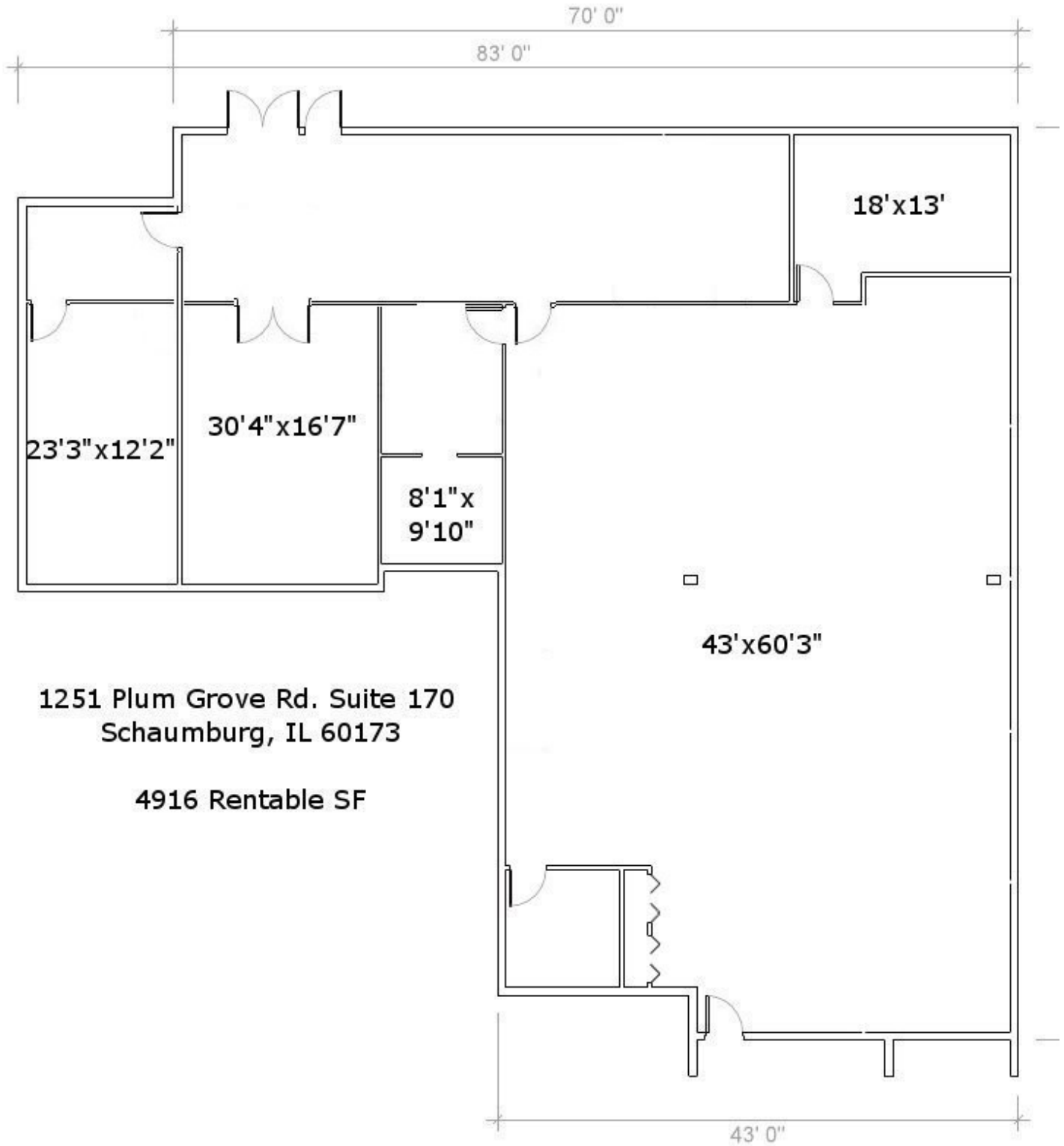
Scan the QR Code or click [here](#) for a 3-D Virtual Tour of the space!



OFFICE SPACE FOR LEASE

1251 N PLUM GROVE RD, SCHAUMBURG, IL

FLOOR PLAN - SUITES 170
4,916 SF



1251 Plum Grove Rd. Suite 170
Schaumburg, IL 60173

4916 Rentable SF