

LAND FOR SALE | BUILD TO SUIT
MAGIC VIEW LAND

2960 E ST LUKE'S STREET | MERIDIAN 83462



NEAR ST. LUKE'S MERIDIAN

SALE | 1.527 ACRES

CONTACT:

Jim Boyd
 208.947.5522
 jim@tokcommercial.com

LISTING COMMENTS:

Utilities available.
 Close proximity to Eagle Road and I-84.
 Located across from the St. Luke's Regional Medical Center.

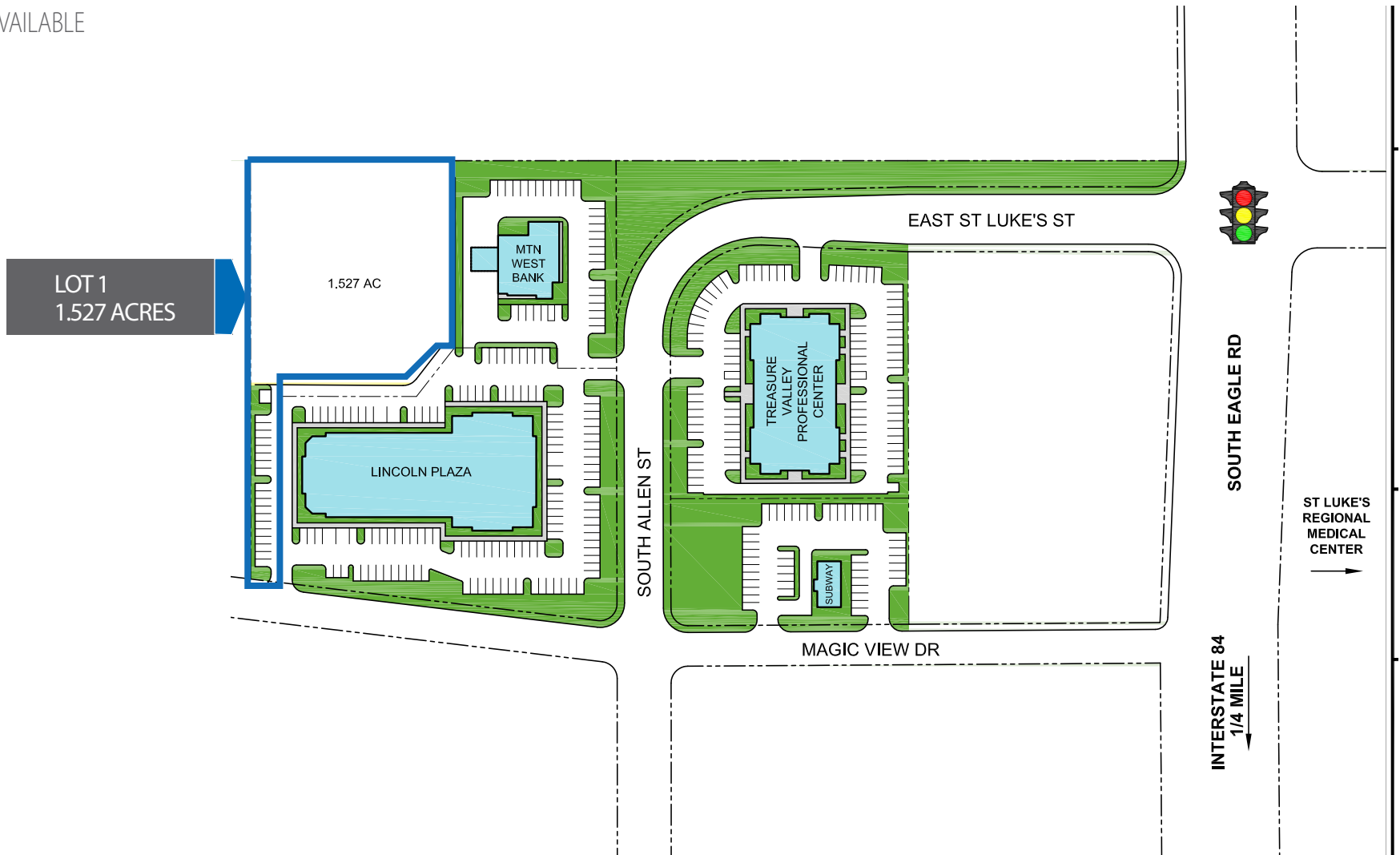
PROPERTY INFORMATION:

Size: 1.527 Acres
Build-out Size: 15,628 SF
Utilities: To Site
Zoning: L-O
Sales Price: Contact Agent

Owner will sell the land or do a build-to-suit.

SITE PLAN

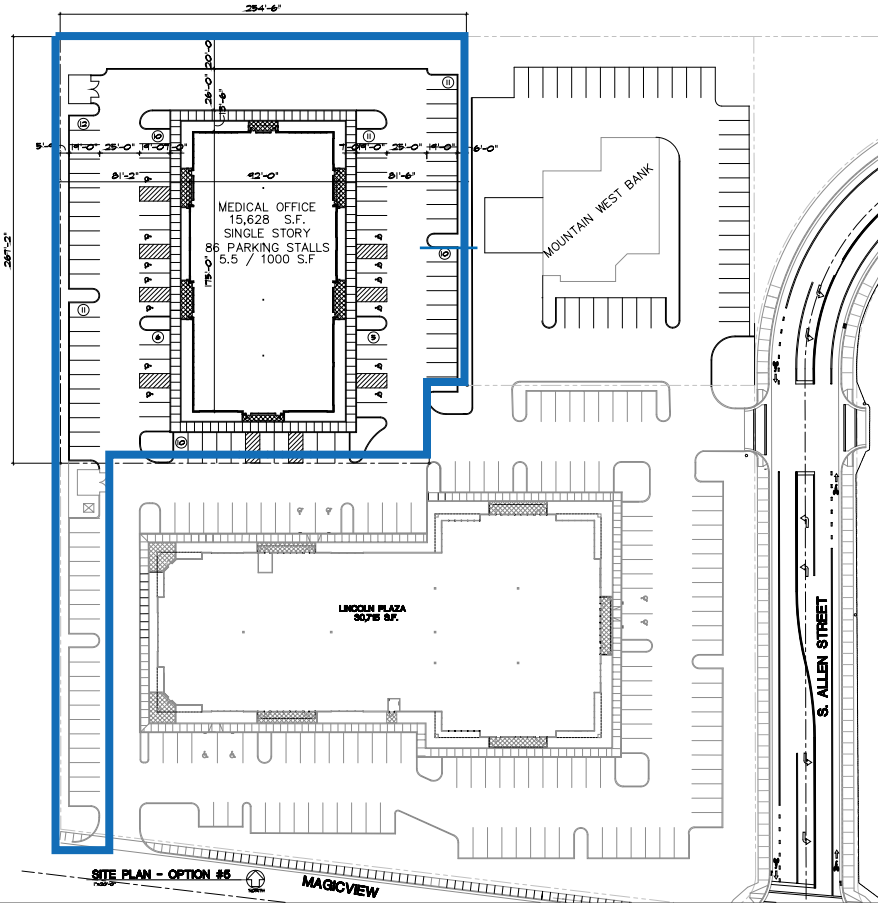
1.527 ACRES AVAILABLE



This information was obtained from sources believed reliable but cannot be guaranteed. Any opinions or estimates are used for example only.

CONCEPTUAL SITE PLAN & RENDERING

15,628 SF BUILD-OUT



This information was obtained from sources believed reliable but cannot be guaranteed. Any opinions or estimates are used for example only.