

**159.08 +/- ACRES
PRIME DEVELOPMENT LAND**



**6311 50 AVENUE
DRAYTON VALLEY, AB**

Victor Moroz, Associate Broker
780.499.6400
victor@royallepage.ca

Rohin Geis, Senior Associate,
587.597.1553
rohin@royallepage.ca

Royal LePage® Noralta Real Estate Inc, Brokerage
202 Main Street, Spruce Grove, AB
Independently Owned & Operated

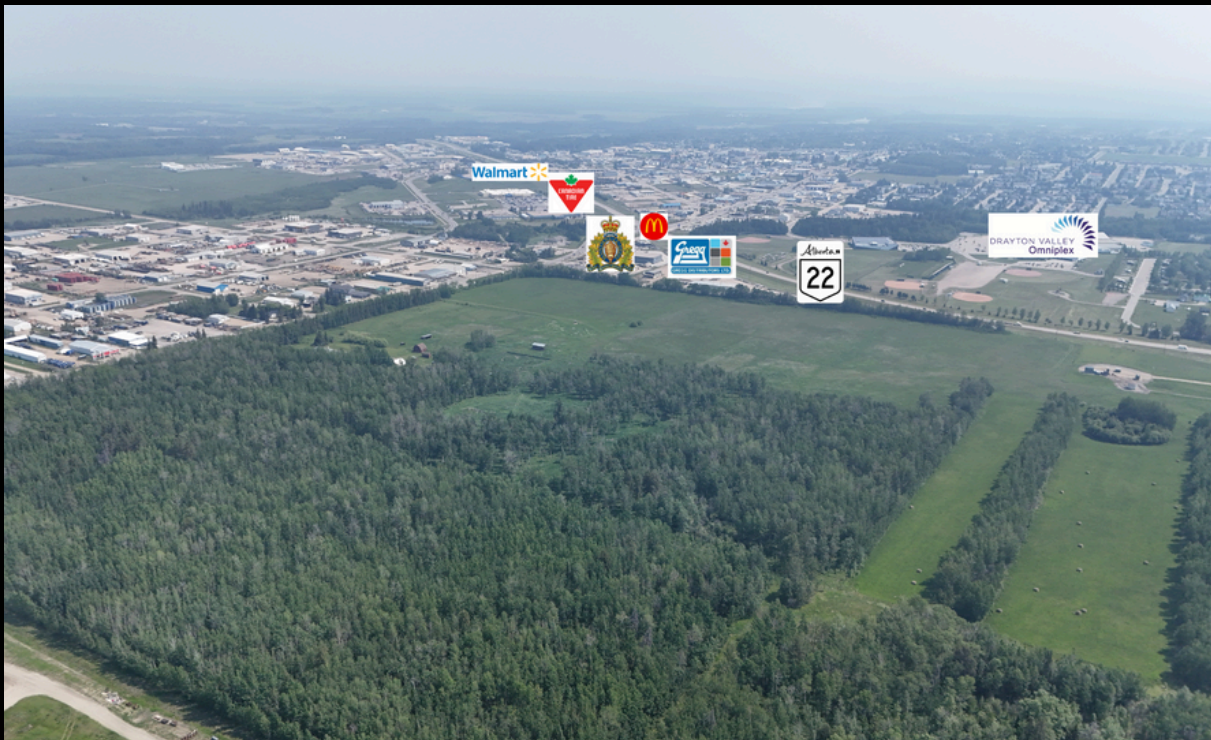


FOR SALE

\$2,700,000.00

Property Features

- 159+/- Acres of Prime Development Land in Drayton Valley
- Zoned S-URB - Special Urban Reserve
- Strategically located along Highway 22
- Excellent visibiltiy and easily accessible
- Surrounded by established commercial & residential developments
- Long term investment with strong redevelopment possibilities
- \$47,500 annual income from registered surface lease
- Well and Septic system on the property
- 2,000+/-sf home & 800+/-sf attached garage included on site

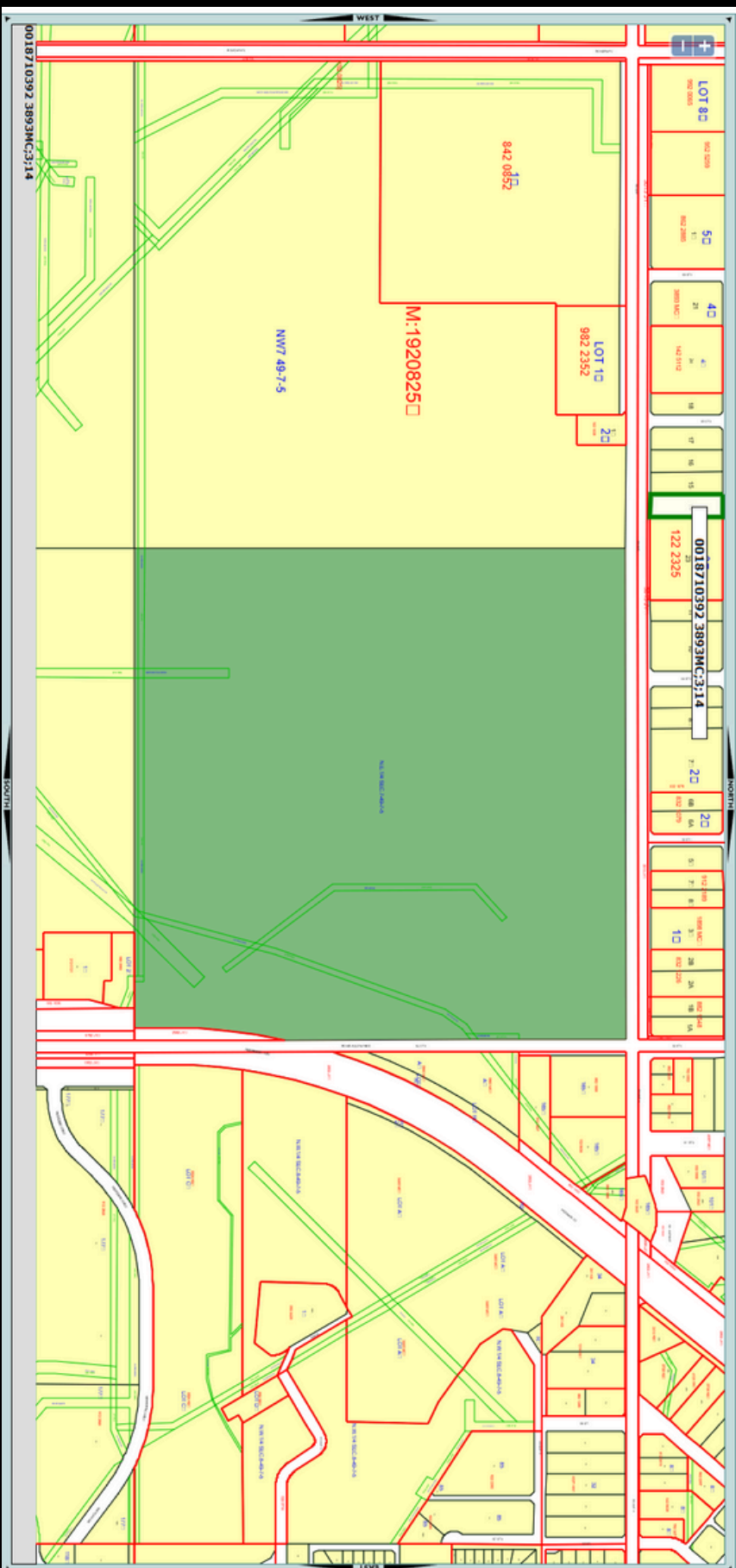


PROPERTY OVERVIEW

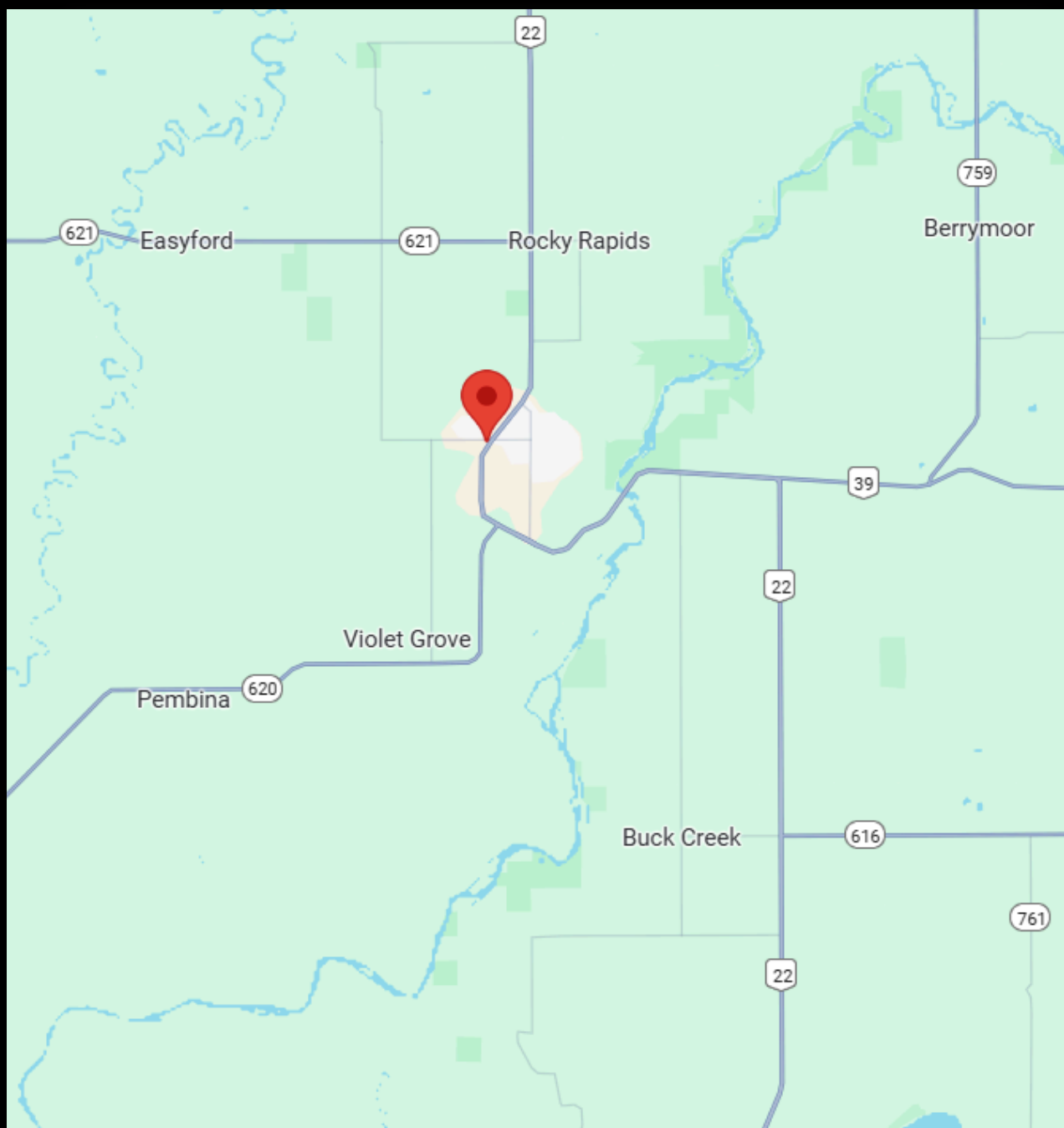
PROPERTY PHOTOS



MAP



LOCATION MAP



Royal LePage® is a registered trademark of Royal Bank of Canada and is used under licence by Residential Income Fund L.P., Bridgemark Real Estate Services Inc. and Bridgemark Real Estate Services Manager Limited. All offices are independently owned and operated, except those marked as indicated at rlp.ca/disclaimer. Not intended to solicit currently listed properties or buyers under contract. The above information is from sources believed reliable, however, no responsibility is assumed for the accuracy of this information. ©2025 Bridgemark Real Estate Services Manager Limited. All rights reserved.