

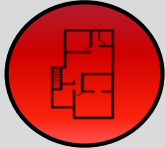
# SHOREWOOD VILLAGE

23470 HIGHWAY 7, SHOREWOOD, MN 55331



KRAUS-ANDERSON®  
Realty Company

## SPACE AVAILABLE



Multiple spaces available  
- see site plan

## SHOPPING CENTER



62,308 sf neighborhood  
shopping center

## LOCATION



Located at the  
intersection of Hwy 7 and  
Hwy 4

## TRAFFIC COUNT



26,000/VPD on Hwy 7  
14,600/VPD on Hwy 41



	1 Mile	3 Miles	5 Miles
POPULATION	4,691	29,878	88,863
DAYTIME POP	3,964	22,888	61,368
HOUSEHOLDS	1,809	11,088	33,671
HOUSEHOLD INCOME	180,757	191,914	168,185



# Retail Aerial



SHOREWOOD VILLAGE  
SHOREWOOD, MN



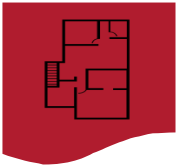


# Aerial View

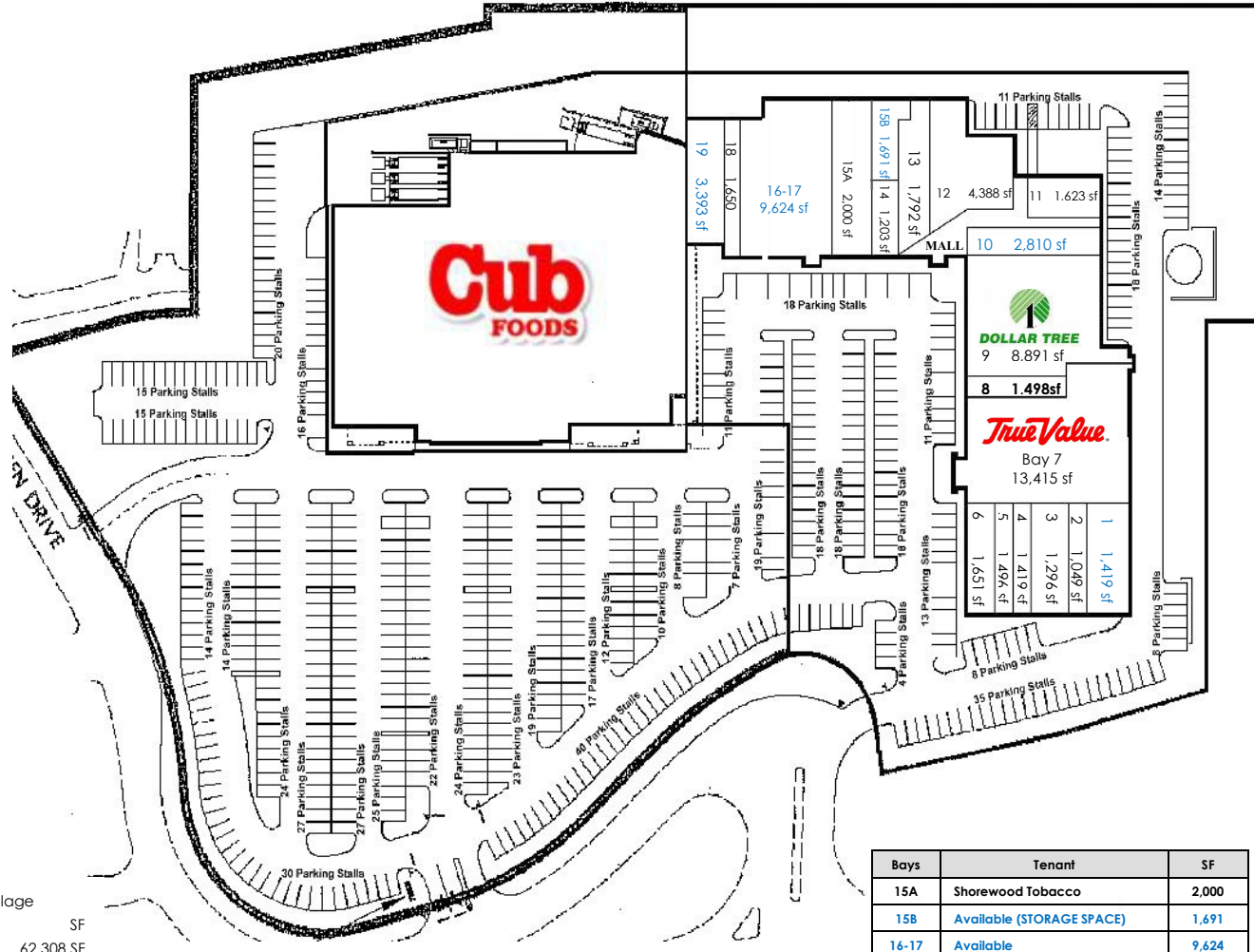


SHOREWOOD VILLAGE  
SHOREWOOD, MN





# Site Plan



Shorewood Village  
 Site Area SF  
 Leaseable Area 62,308 SF  
 Parking Stalls 563

Bays	Tenant	SF
15A	Shorewood Tobacco	2,000
15B	Available (STORAGE SPACE)	1,691
16-17	Available	9,624
18	Great Clips	1,650
19	Available	3,393

Bays	Tenant	SF
1	Available	1,419
2	Milios	1,049
3	Engage Physical Therapy	1,296
4	Dominos	1,419
5	Verizon	1,496
6	Chipotle	1,651
7	True Value Hardware	13,415
8	Tonka Wellness Spa	1,498
9	Dollar Tree	8,891
10	Available	2,810
11	Tonka West Outfitter	1,623
12	Shorewood Liquor	4,388
13	Hairazors	1,792
14	DeParis Nails	1,203

Highway 7 (25,500/vpd)

Highway 41 (14,000/vpd)

2/24/26

SHOREWOOD VILLAGE  
 23470 HIGHWAY 7, SHOREWOOD, MN 55331



# Contact

---

## **Kraus-Anderson**

501 South Eighth Street  
Minneapolis, MN 55404

[www.krausanderson.com](http://www.krausanderson.com)

Main 612-332-7281  
Fax 952-881-8114



## **Dan Mossey**



O: 612-255-2420

C: 763-438-4751



[dan.mossey@krausanderson.com](mailto:dan.mossey@krausanderson.com)