

THE CHAMBER BUILDING

2390 Tamiami Trail N, STE 106

Naples, FL 34103

FOR LEASE



- PREMISES:**
- 1,428± RSF space on the 1st floor
 - Built-out and ready for occupancy
 - Designated covered parking available
 - Pylon signage available

LEASE RATE: \$25.00 PSF + NNN (est. \$11.36 PSF)

- ZONING:**
- HC (City of Naples)
- Approved for a variety of retail, office and medical office uses

- LOCATION:**
- Conveniently located on US-41, 1/4 mile north of Golden Gate Parkway.
 - US-41 access: right in and curb cut for right or left out.

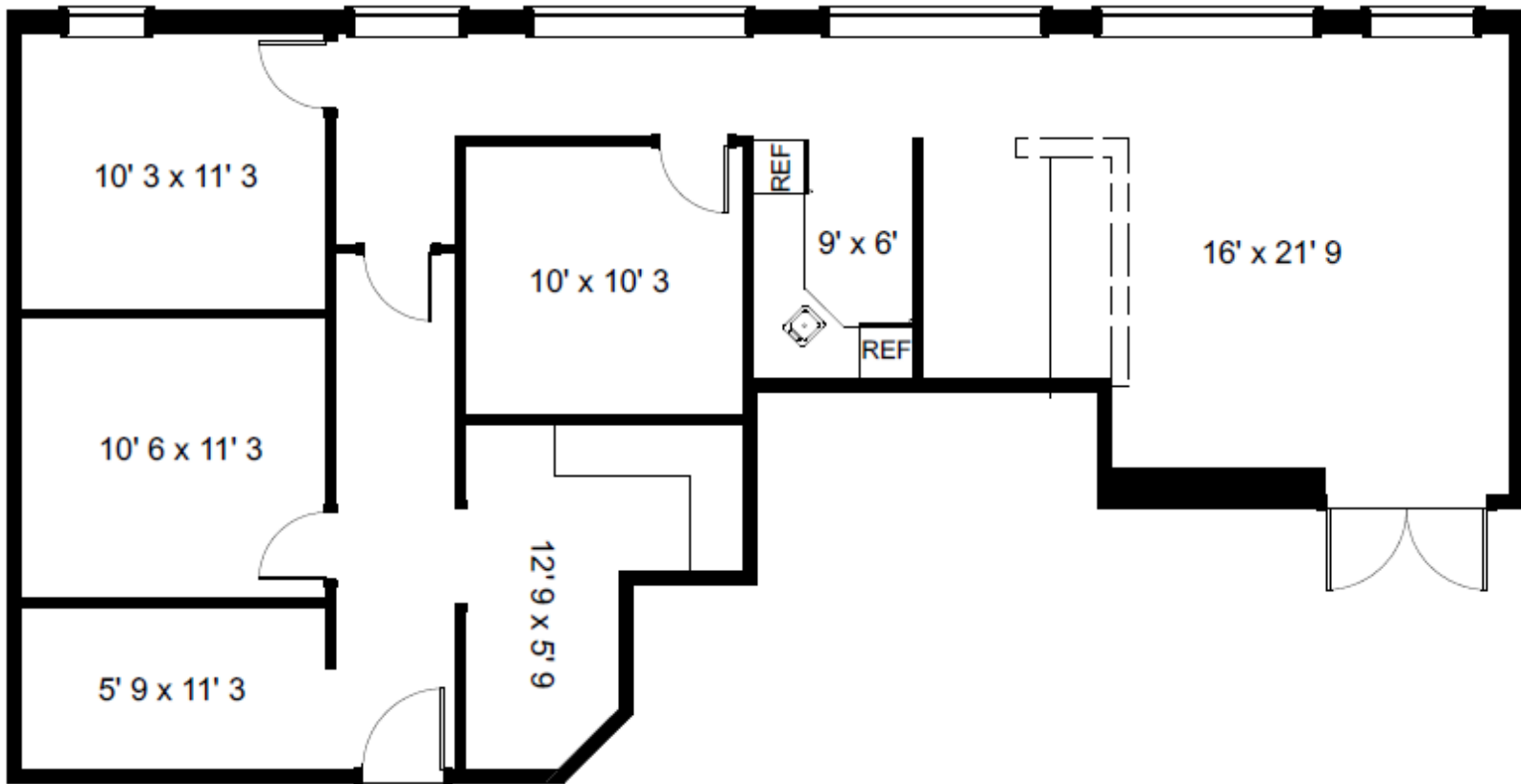


PREMIER
COMMERCIAL



PREMIER
COMMERCIAL

FLOOR PLAN



All information is deemed accurate but not guaranteed. Prices and availability subject to change without notice.

1,428± RSF

LEASE RATE: \$25.00 PSF + NNN

CONTACT US:

Matthew Stepan, CCIM
Commercial Advisor
MattS@premiermail.net

WT Pearson
Broker Associate
WT@premiermail.net