

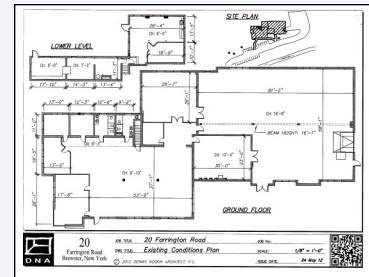


COVINGTON COMMERCIAL REALTY

Louis J. Bishop
Associate Real Estate Broker

Mail: 322 Clock Tower Commons
Phone: 845/279-2321
Fax : 845-279-8314
Email: LJBishop@CovingtonCR.com

FOR LEASE



20 FARRINGTON ROAD

Brewster, NY 10509

(Old NYS Route 6)

Industrial Flex Building. 6,000+ sq. ft of office space. 5,000+ sq. ft. of shop/warehouse/storage space. Ample parking and loading areas. One loading dock. Sprinkler System.

Offer Type: Lease

Listing Size: 11,546 sq. ft.

Offered At: \$14.50 per sq. ft. Gross

Located: Between I-84/I-684 Cloverleaf in Brewster, New York and I-84 Exit 1 in Connecticut (Mill Plain Road)

All information is from sources deemed reliable and is submitted subject to error, omission, prior sale, prior lease, or withdrawal without notice and subject to approval of the purchase/lease by the owner